



---

**No Help / Unacceptable**

2 messages

**dolgoda** <dolgoda@yahoo.com>

Thu, Jul 28, 2022 at 11:26 AM

To: "Councilmember.Bonin@lacity.org" &lt;Councilmember.Bonin@lacity.org&gt;

Cc: "Clerk.CPS@lacity.org" &lt;Clerk.CPS@lacity.org&gt;, "lafdcert@lacity.org" &lt;lafdcert@lacity.org&gt;

Dear Mike Bonin Office

For several weeks, a transient has set up on the Sidewalk in front of [1744 Abbott Kinney](#). The presence has been growing exponentially each day.

It is now to the point that the sidewalk is not useable.

So people, dog walkers, mothers with baby strollers, need to go out in the street to get around it.

That section of Abbott Kinney is at the crux of a blind curve.

Someone is going to get hit or killed.

Posting on MY311, does nothing.  
Calling city service, does nothing.  
Calling the Fire Dept, does nothing.  
Calling the Police, does nothing.

If a person gets hit by a car, because they could not use the sidewalk safely, this is on the city, and you.

Take this as a NOTE OF RECORD.

DO SOMETHING ABOUT THIS NOW.

John Joseph Minardi  
Venice Homeowner for 30 years

---

**dolgoda** <dolgoda@yahoo.com>

Thu, Jul 28, 2022 at 11:28 AM

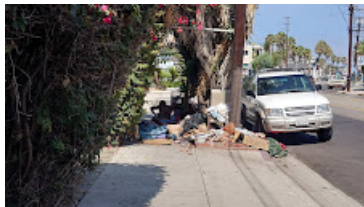
To: "Councilmember.Bonin@lacity.org" &lt;councilmember.bonin@lacity.org&gt;

Cc: "Clerk.CPS@lacity.org" &lt;clerk.cps@lacity.org&gt;, "lafdcert@lacity.org" &lt;lafdcert@lacity.org&gt;

PICTURES ENCLOSED

[Quoted text hidden]

---

**2 attachments****DSC\_0325.JPG**  
416K**DSC\_0309.JPG**  
484K