

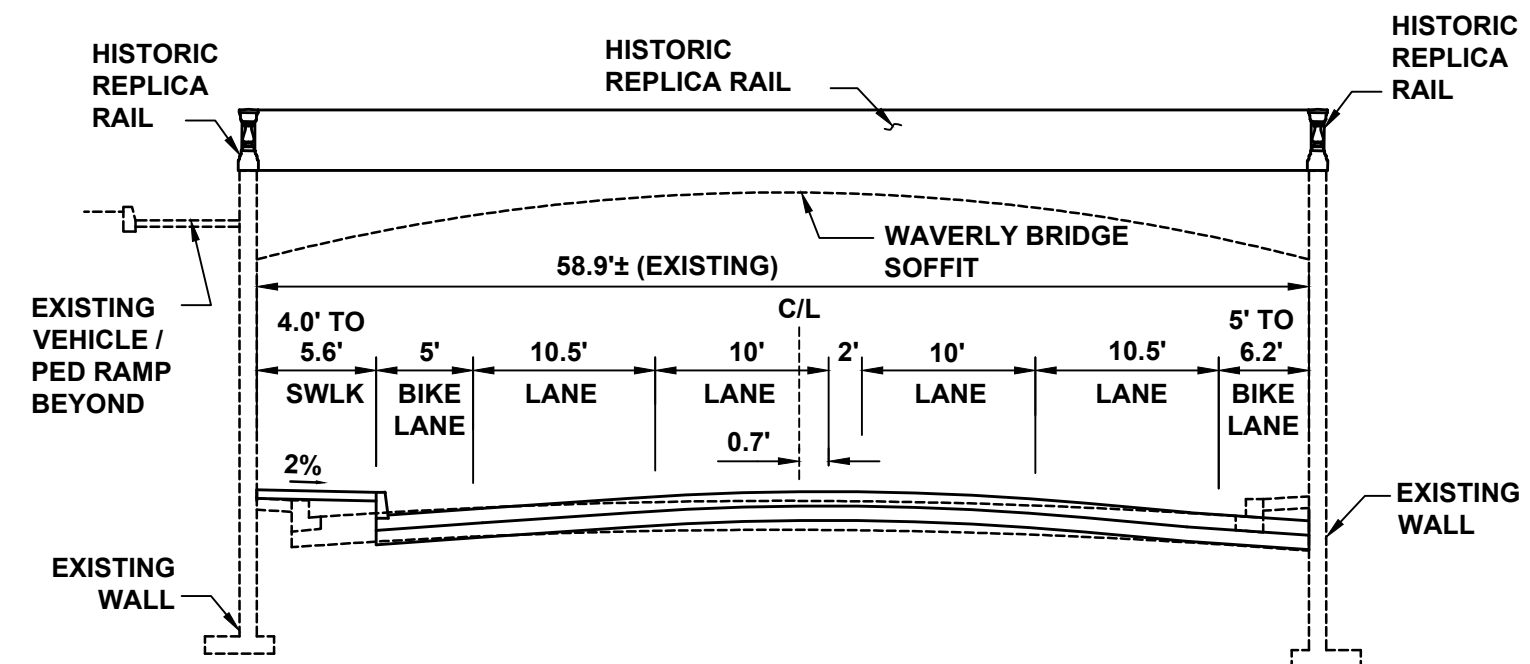
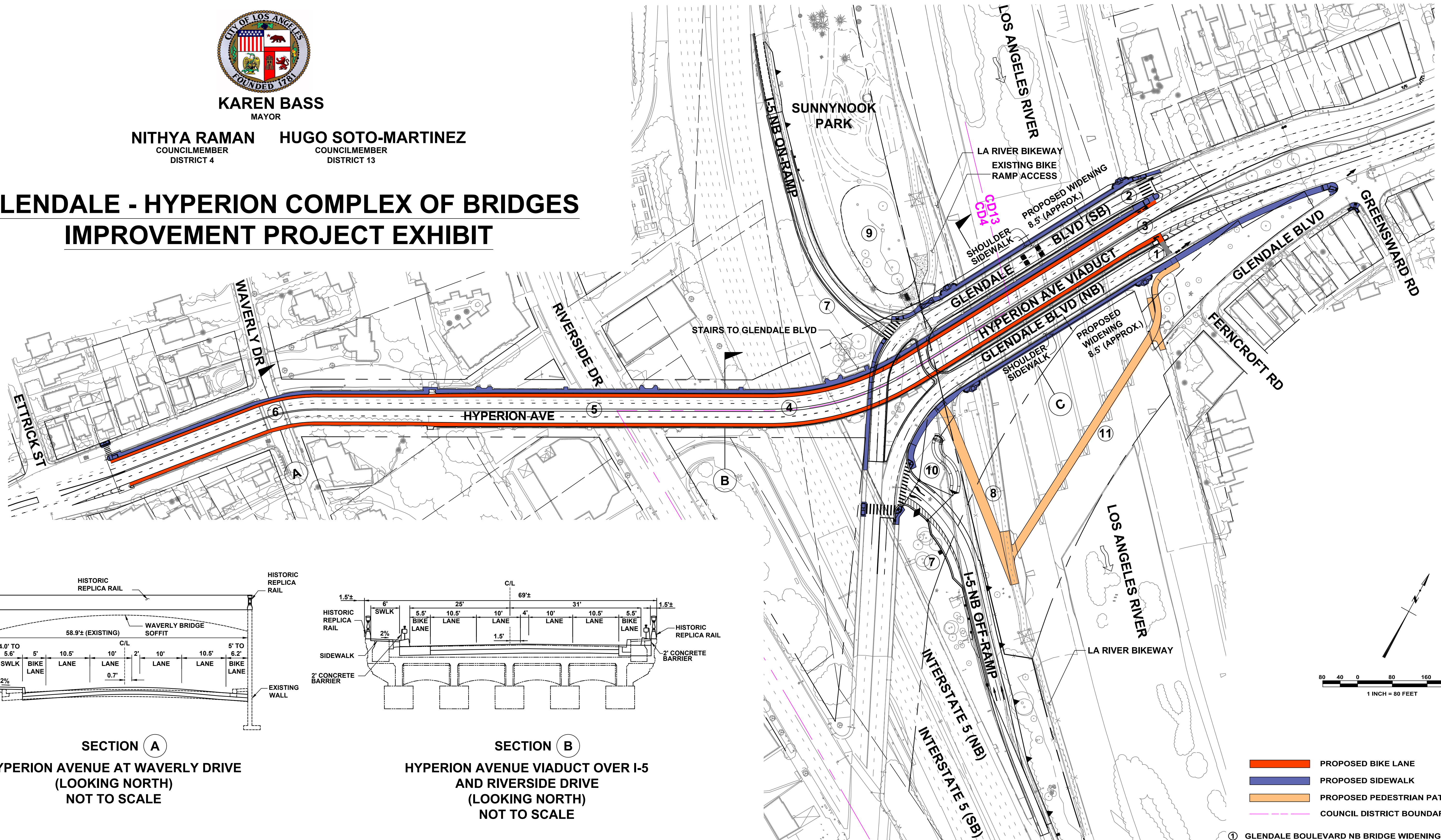


KAREN BASS
MAYOR

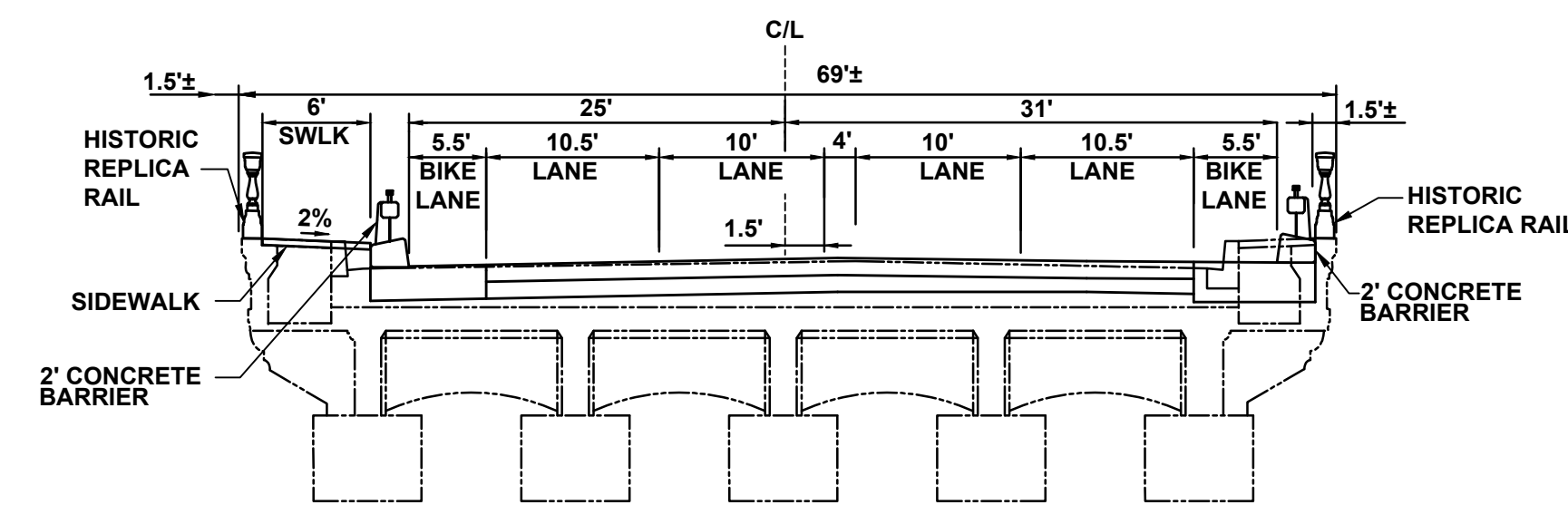
NITHYA RAMAN
COUNCILMEMBER
DISTRICT 4

HUGO SOTO-MARTINEZ
COUNCILMEMBER
DISTRICT 13

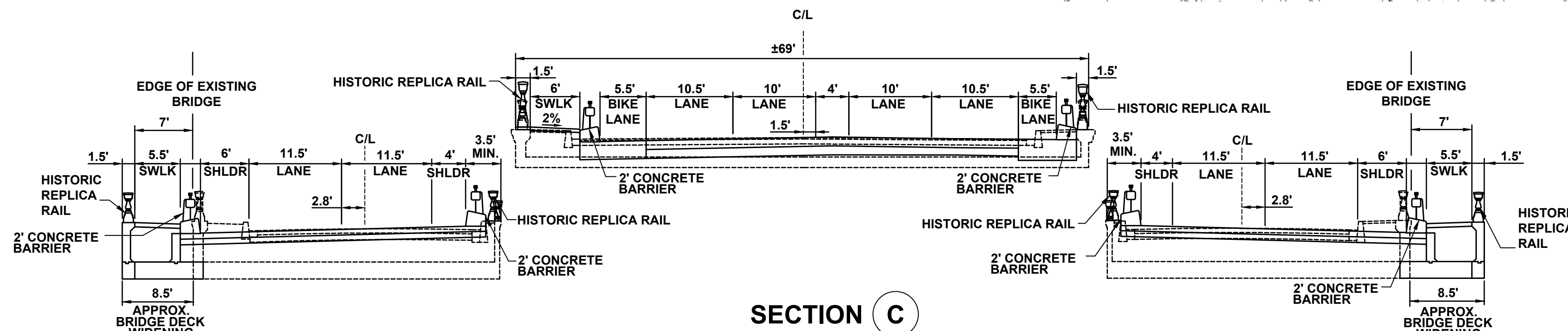
GLENDALE - HYPERION COMPLEX OF BRIDGES IMPROVEMENT PROJECT EXHIBIT



SECTION A
HYPERION AVENUE AT WAVERLY DRIVE
(LOOKING NORTH)
NOT TO SCALE



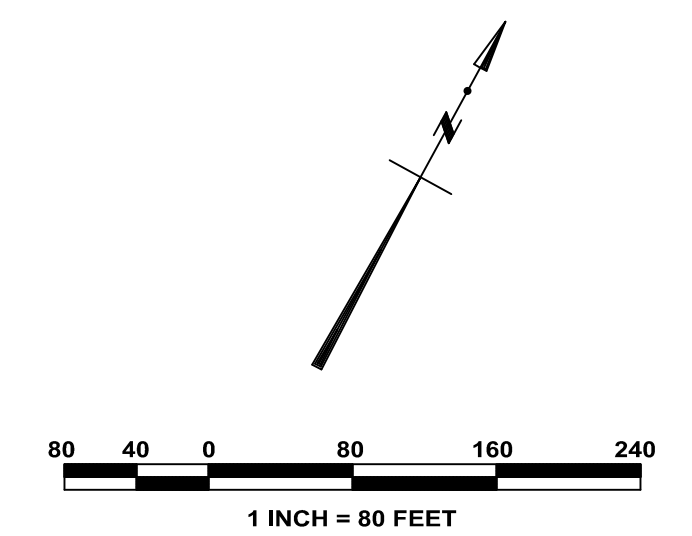
SECTION B
HYPERION AVENUE VIADUCT OVER I-5
AND RIVERSIDE DRIVE
(LOOKING NORTH)
NOT TO SCALE



SECTION C
SOUTHBOUND GLENDALE BLVD.
BRIDGE OVER L.A. RIVER
(LOOKING NORTH)
NOT TO SCALE

SECTION C
HYPERION AVENUE BRIDGE
OVER L.A. RIVER
(LOOKING NORTH)
NOT TO SCALE

SECTION C
NORTHBOUND GLENDALE BLVD.
BRIDGE OVER L.A. RIVER
(LOOKING NORTH)
NOT TO SCALE



- █ PROPOSED BIKE LANE
- █ PROPOSED SIDEWALK
- █ PROPOSED PEDESTRIAN PATH
- COUNCIL DISTRICT BOUNDARY

- ① GLENDALE BOULEVARD NB BRIDGE WIDENING
- ② GLENDALE BOULEVARD SB BRIDGE WIDENING
- ③ HYPERION AVENUE BRIDGE OVER LA RIVER SEISMIC RETROFIT
- ④ HYPERION AVENUE BRIDGE OVER I-5 SEISMIC RETROFIT
- ⑤ HYPERION AVENUE BRIDGE OVER RIVERSIDE DRIVE SEISMIC RETROFIT
- ⑥ WAVERLY DRIVE OVER HYPERION AVE HISTORIC RAILING REPLICATION
- ⑦ INTERSTATE 5 NORTHBOUND RAMP MODIFICATION, RESTORATION
- ⑧ LA RIVER BIKEWAY ACCESS RAMP
- ⑨ BIO-FILTRATION BASIN
- ⑩ BIO-SWALE
- ⑪ NON-MOTORIZED BRIDGE AND LINKAGE



CITY ENGINEER: GARY LEE MOORE, P.E., ENV SP



PROJECT TITLE: GLENDALE BLVD - HYPERION AVE
COMPLEX OF BRIDGES IMPROVEMENT

MARCH 2018