

INFORMATION ON THIS MAP IS
PRELIMINARY
 AND SUBJECT TO CHANGE

TITLE: MCFARLAND AVENUE BETWEEN "D" STREET AND "E" STREET.

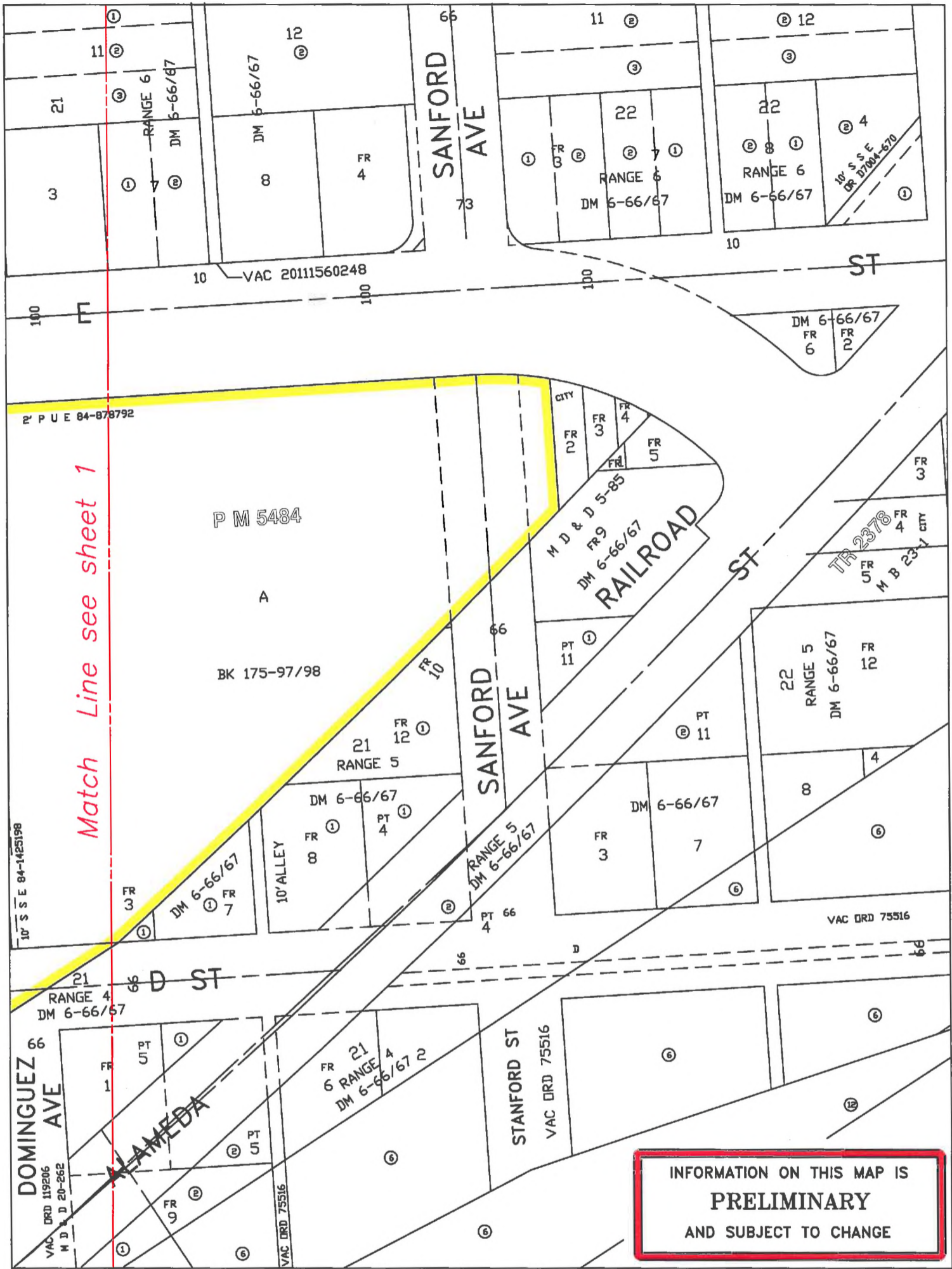
WORK ORDER NO. VAC- E1400999
 COUNCIL FILE NO. 06-1125
 COUNCIL DIST. 15 DIV. INDEX 300
 ENG. DIST. HARBOR T.G. 794-F7
 DISTRICT MAP 030 B 209



DEPT. OF PUBLIC WORKS
BUREAU OF ENGINEERING
 CITY OF LOS ANGELES
Sheet 1 of 2 sheets

EXHIBIT B

Legend: Vacation boundary as shown



TITLE: MCFARLAND AVENUE BETWEEN "D" STREET AND "E" STREET.

WORK ORDER NO. VAC- E1400999
 COUNCIL FILE NO. 06-1125
 COUNCIL DIST. 15 DIV. INDEX 300
 ENG. DIST. HARBOR T.G. 794-F7
 DISTRICT MAP 030 B 209



DEPT. OF PUBLIC WORKS
 BUREAU OF ENGINEERING
 CITY OF LOS ANGELES
Sheet 2 of 2 Sheets

EXHIBIT B

Legend: Vacation boundary as shown