



# The Accelerated Schools

W. M. Keck Early Learning Center • Accelerated Charter Elementary School

The Accelerated School • Wallis Annenberg High School

March 15, 2013

**Founder & CEO**

Johnathan X. Williams

---

**Board of Trustees**

Eric C. Johnson, President  
*Victex Inc./Crail-Johnson  
Foundation*

Dr. Simeon P. Slovacek, Vice  
President  
*California State University Los  
Angeles, Charter College of  
Education*

Michael J. López, Treasurer  
*Booz | Allen | Hamilton*

Peter B. Morrison  
*Skadden, Arps, Slate, Meagher  
& Flom LLP*

Dr. Juli P. Quinn  
*President, FREducation, LLC*

Leonard Rabinowitz  
*StudioCL*

Alma A. Rodriguez  
*WAHS Parent Representative*

Marivia Torres  
*TAS Parent Representative*

John W. Ward  
*Wells Fargo & Company*

Sarah R. Yetter  
*ACES Parent Representative  
Alternate*

Public Works Committee  
Of the Honorable Council  
Of the City of Los Angeles

**SUBJECT:**

VACATION APPROVAL – VAC-E1401205 – Council File No. 13-0031  
Alley Easterly of Main St. from Martin Luther King Jr. Blvd. to Approximately 230 Feet  
Northerly Thereof.

Honorable Members:

We respectfully request that the following Condition be amended as follows:

**Revise “Conditions” – Item 6b:** *“Widen existing 28-foot wide half roadway to 35 feet with the construction of additional pavement, integral concrete curb & gutter, access ramp, and 10-foot wide sidewalk along Main Street from the new property line along the project, together with relocating the catch basin to the new location of curb.”*

**Rationale:** We are requesting that this street widening requirement be modified because of the following reasons:

1. **Safety for Students:** The California Department of Education (CDE) has reviewed the site plan and has issued a statement asserting that widening the street (Main Street along the entire school property including the street intersection) precludes having a dedicated parent/student drop-off lane or “curb cut”. CDE has strongly urged the Accelerated Charter Elementary School (ACES) to reconsider and redesign the curb cut or parent/student drop-off lane. Please see the attached statement from CDE (Attachment 1) and the site plan showing the proposed parent/student drop-off lane (Attachment 2).
2. **Main Street was not widened for The Accelerate School (TAS) Campus:** The main campus of The Accelerated School is located immediately south of the proposed ACES campus across Martin Luther King Boulevard which opened in 2005. Widening Main Street for the construction of TAS was not required at that time, but a parent/student drop-off lane was constructed per Street Improvement

ACES 1 (K-1<sup>st</sup> grade) | 119 E. 37<sup>th</sup> Street, Los Angeles, CA 90011 | Office (323) 846-6694 | Fax (323) 846-0686

ACES 2 (2<sup>nd</sup> – 6<sup>th</sup> grade) | 1010 E. 34<sup>th</sup> Street, Los Angeles, CA 90011 | Office (323) 313-4752

W.M. Keck Learning Center (pre-K) / The Accelerated School (K-8) / Wallis Annenberg High School: 116 E. Martin Luther King Jr. Blvd., Los Angeles, CA, 90011

Main Office Phone (323) 235-6343 | Main Office Fax (323) 235-6346

[www.accelerated.org](http://www.accelerated.org)



# The Accelerated Schools

W. M. Keck Early Learning Center • Accelerated Charter Elementary School

The Accelerated School • Wallis Annenberg High School

Plan (P-35628 – see “Attachment 3”). The required improvements satisfied City Planning, DOT and BOE’s requirements.

3. Economic Hardship: The estimated cost of widening Main Street as noted is approximately \$562,500.00. The Accelerate School is a registered Charter School with the Los Angeles Unified School District and depends entirely on public and private funding vehicles to support the construction and on-going operations of this campus. The burden of the cost to widen Main Street would virtually render the construction of this campus economically unfeasible.

Please contact me at (323) 333-6751, if you have any questions.

Sincerely,

Johnathan X. Williams  
Founder and CEO

Attachment:

- 1) Department of Education Email Statement, dated 1/2/2013
- 2) AS-100 - Alternate Site Plan showing student drop off (partially-widened Main Street)
- 3) Street Improvement Plan – P35628

cc: Michael Espinosa – Los Angeles City Clerk’s Office  
Eric Johnson – TAS  
Ron Takaki - Gafcon  
Blair Ripplinger – gkkworks  
Ron Canedy – FPL  
Alan Wong – FPL

ACES 1 (K-1<sup>st</sup> grade) | 119 E. 37<sup>th</sup> Street, Los Angeles, CA 90011 | Office (323) 846-6694 | Fax (323) 846-0686

ACES 2 (2<sup>nd</sup> – 6<sup>th</sup> grade) | 1010 E. 34<sup>th</sup> Street, Los Angeles, CA 90011 | Office (323) 313-4752

W.M. Keck Learning Center (pre-K) / The Accelerated School (K-8) / Wallis Annenberg High School: 116 E. Martin Luther King Jr. Blvd., Los Angeles, CA, 90011

Main Office Phone (323) 235-6343 | Main Office Fax (323) 235-6346

[www.accelerated.org](http://www.accelerated.org)

**Ron Takaki**

---

**From:** Johnathan Williams <jwilliams@accelerated.org>  
**Sent:** Thursday, January 17, 2013 2:32 PM  
**To:** Emily Baratta (emily@s-f-c.org); Eric Johnson; Ron Takaki; Blair Rippliger  
**Subject:** Fw: new elementary school at MLK Jr. Blvd. & Main Street--site access issue

---

**From:** Liese Olukoya <[LOlukoya@cde.ca.gov](mailto:LOlukoya@cde.ca.gov)>  
**Date:** Wed, 2 Jan 2013 21:37:06 +0000  
**To:** Johnathan Williams<[jwilliams@accelerated.org](mailto:jwilliams@accelerated.org)>  
**Subject:** new elementary school at MLK Jr. Blvd. & Main Street--site access issue

Dear Mr. Williams:

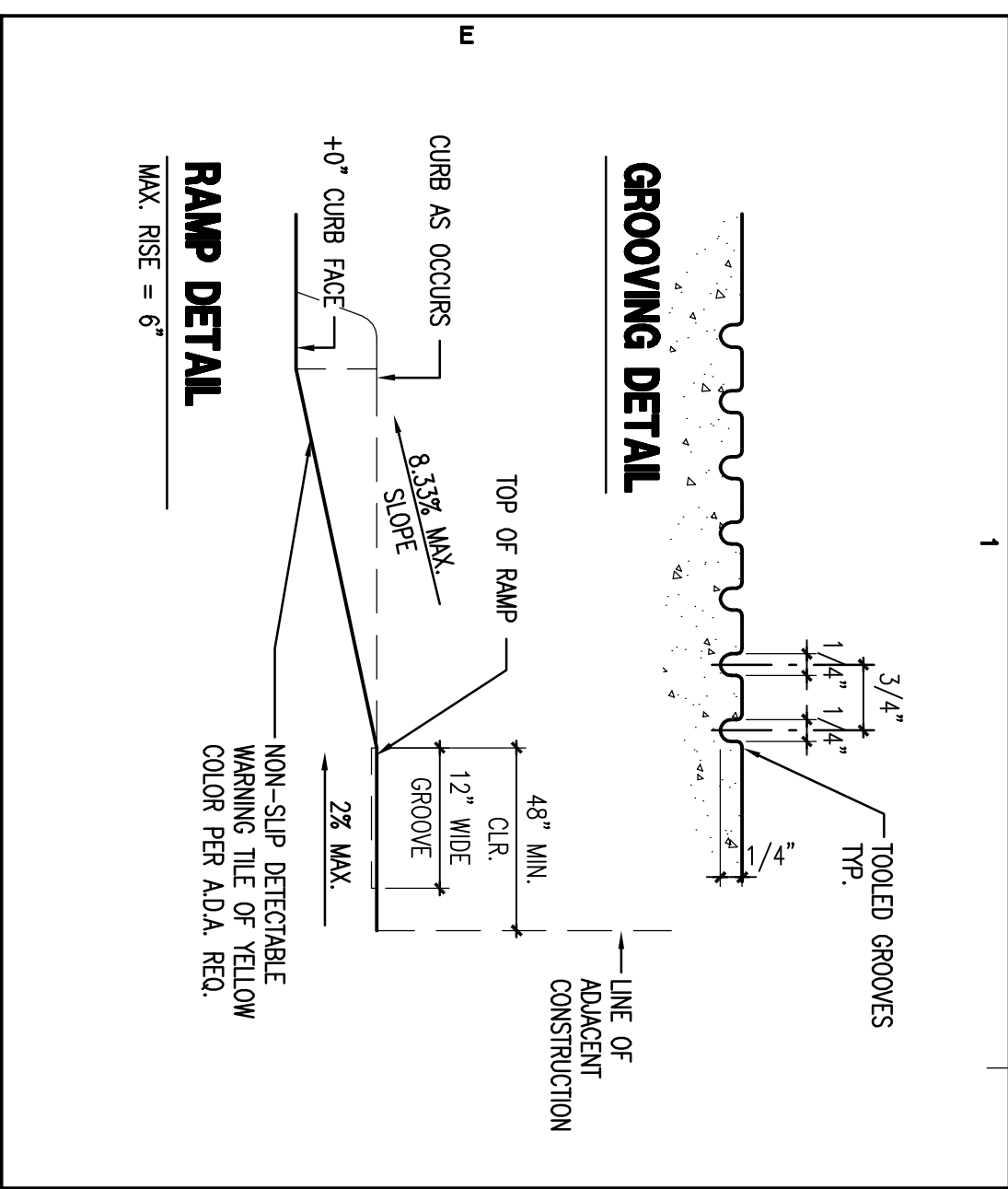
It is a condition of receiving State funding for new school construction that the California Department of Education (CDE) review the construction plans for compliance with the California Code of Regulations (CCR), Title 5 (that relate to school facilities construction), to ensure that they meet both the educational adequacy of the proposed program at the site as well as provide the highest level of student safety. Further, it is the responsibility of this Department to notify the applicant that the plans comply with the standards set therein.

The construction plans submitted to our office for review for the project listed as "The Accelerated Charter Elementary School" were given a final plan approval on December 18, 2012. In the architectural plan section, the site plan reflected a change in the layout of the site since the earlier submittal (to comply with the requirement for a preliminary review of the plans) received by this office on May 25, 2012. The noted alteration reflected a proposed change in the vehicular drop off area adjacent to the site on Main Street from a lengthy curb cut to a widening of the street frontage from the intersection at the southwest corner of the site extending to the north along the western side of the site.

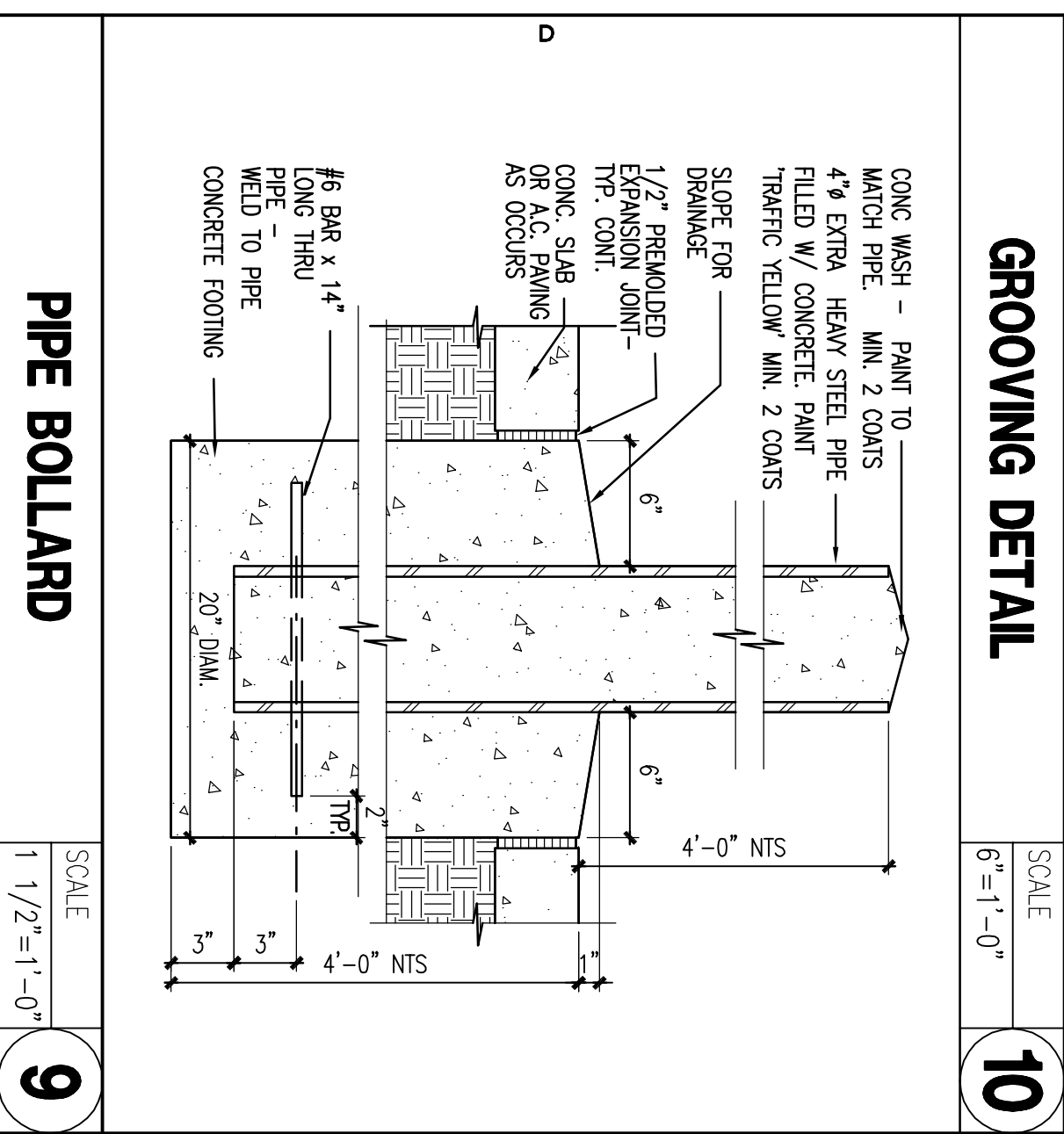
Although it is ideal to incorporate a parent drop off area that is actually on site, the constraints of a dense urban area may prevent the acquisition of sufficient land to accomplish this. In such a situation, the preferred alternate is to remove the vehicles to the greatest extent possible from the street traffic before initiating unloading of the passengers, for their safety. A curb cut is a typical resolution to this issue of site size constraint and is, as it was in this case, one that the CDE will approve. The safety of the student population at the school is further compromised when the vehicles are not able to be physically separated from any moving traffic by means of a barrier such as that described in the previous sentence—and the redesign of the drop off proposed in the final plans submitted to our office may very well lend itself to creating a situation that could be more dangerous than that in the earlier version of the plans.

The safety of such a young student population, as is reflected in a planned elementary school, is one that the State takes quite seriously, as can be supported in the CCR, and for which we give a high level of diligent regard in our review of the proposed school site and plans. I would strongly urge that the curb cut as recognized in the earlier version of the plans for this project be reconsidered as a means of providing private vehicles a method of dropping off and picking up students enrolled at this school.

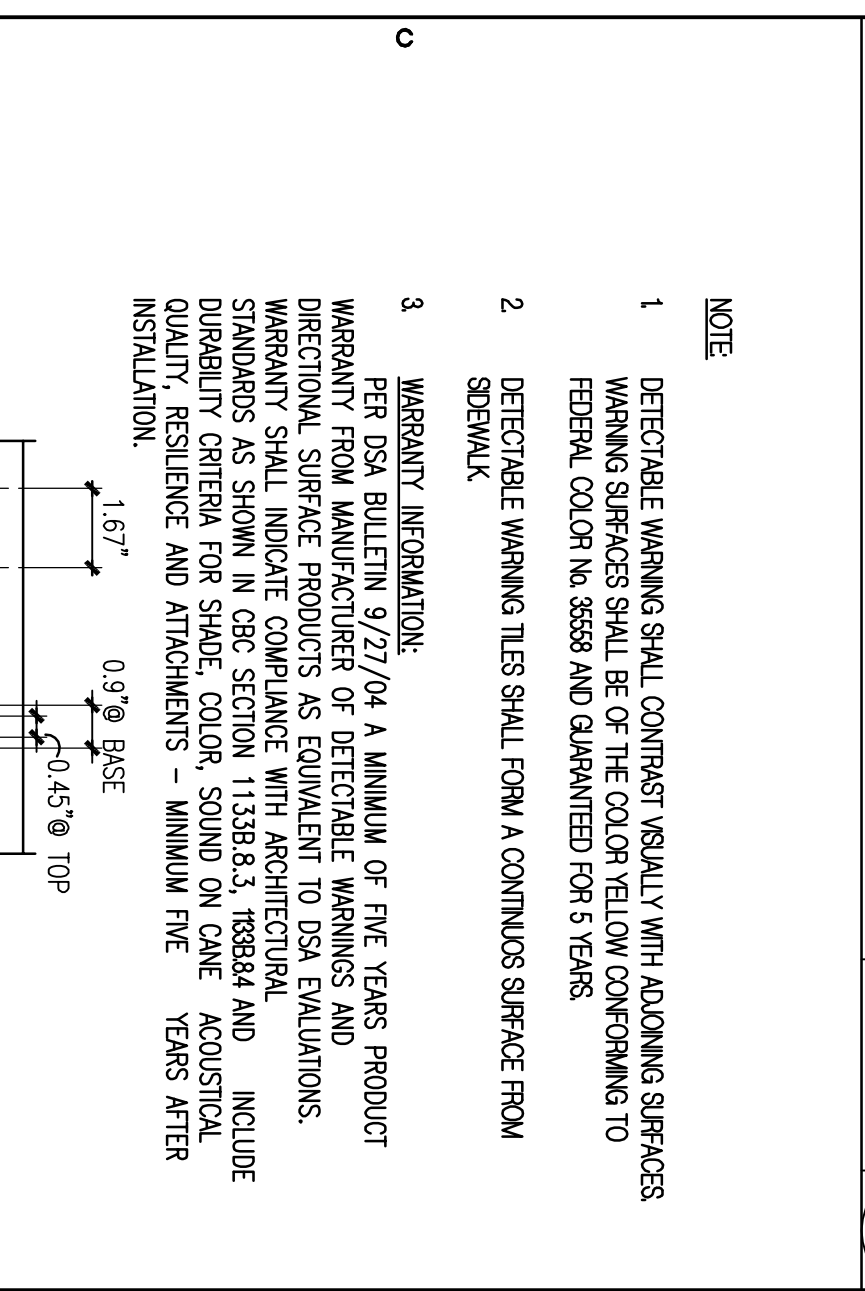
Liese W. Olukoya, Field Representative  
School Facilities & Transportation Services Division  
California Department of Education  
1430 N St., Ste. 1201  
Sacramento, CA 95814  
916/445-5657



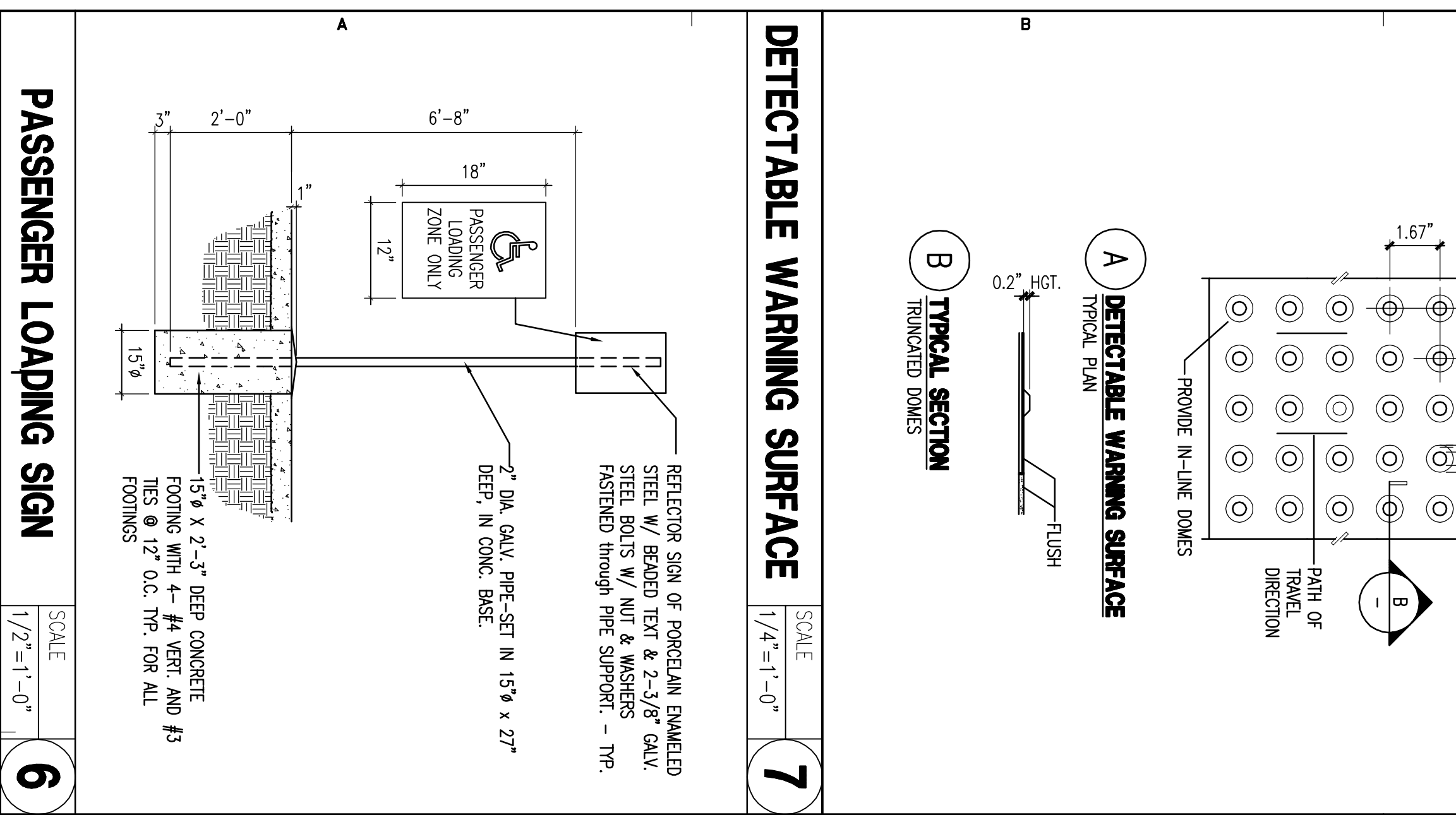
**GROOVING DETAIL**  
SCALE: 6"=1'-0"



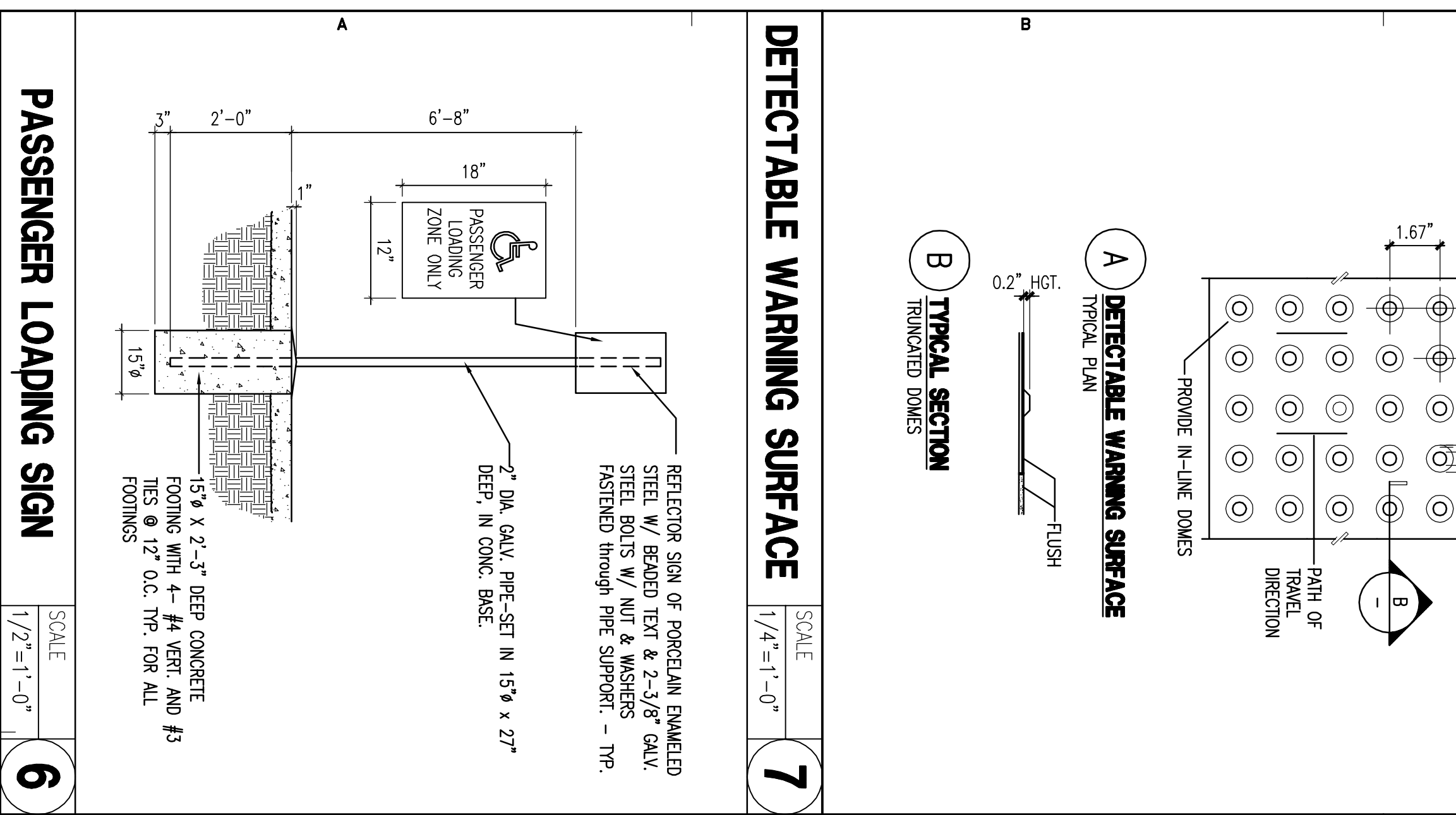
**GROOVING DETAIL**  
SCALE: 6"=1'-0"



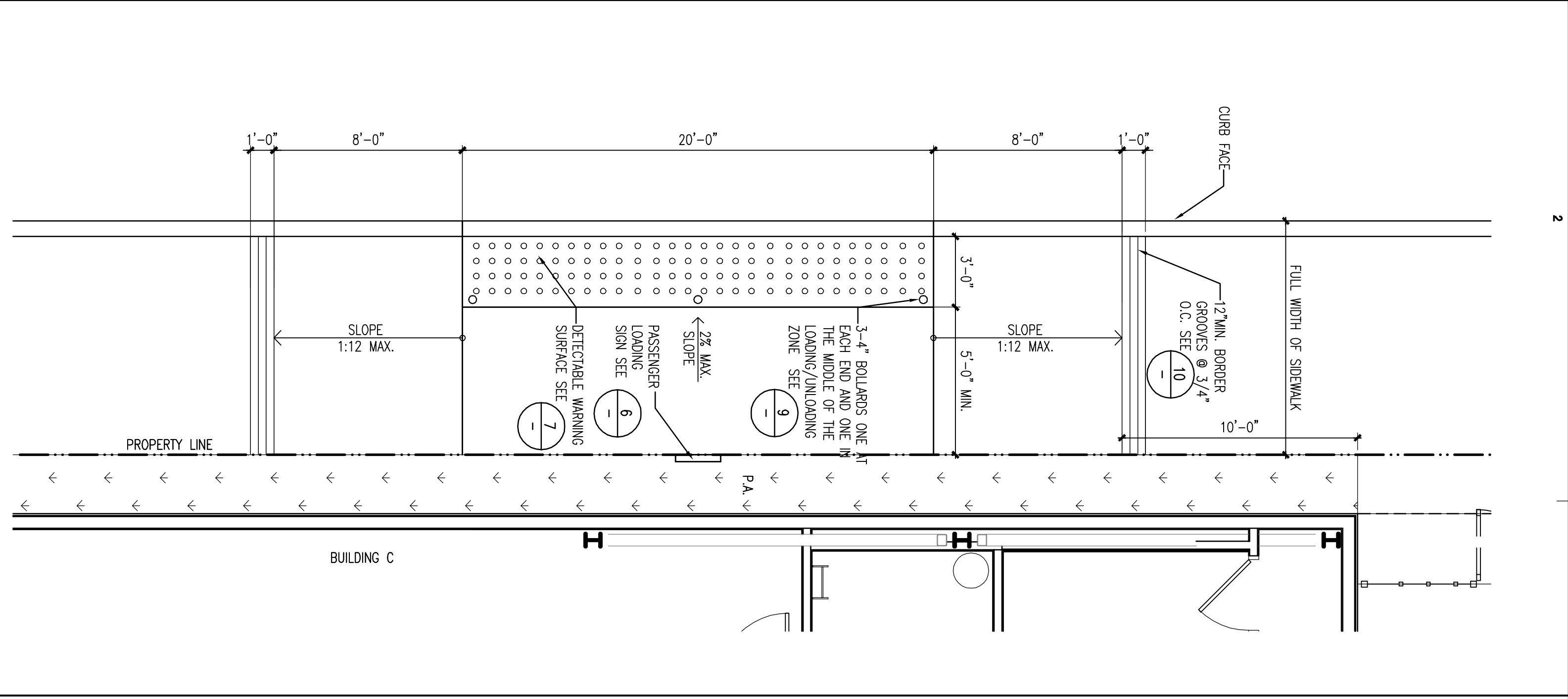
**PIPE BOLLARD**  
SCALE: 1 1/2"=1'-0"



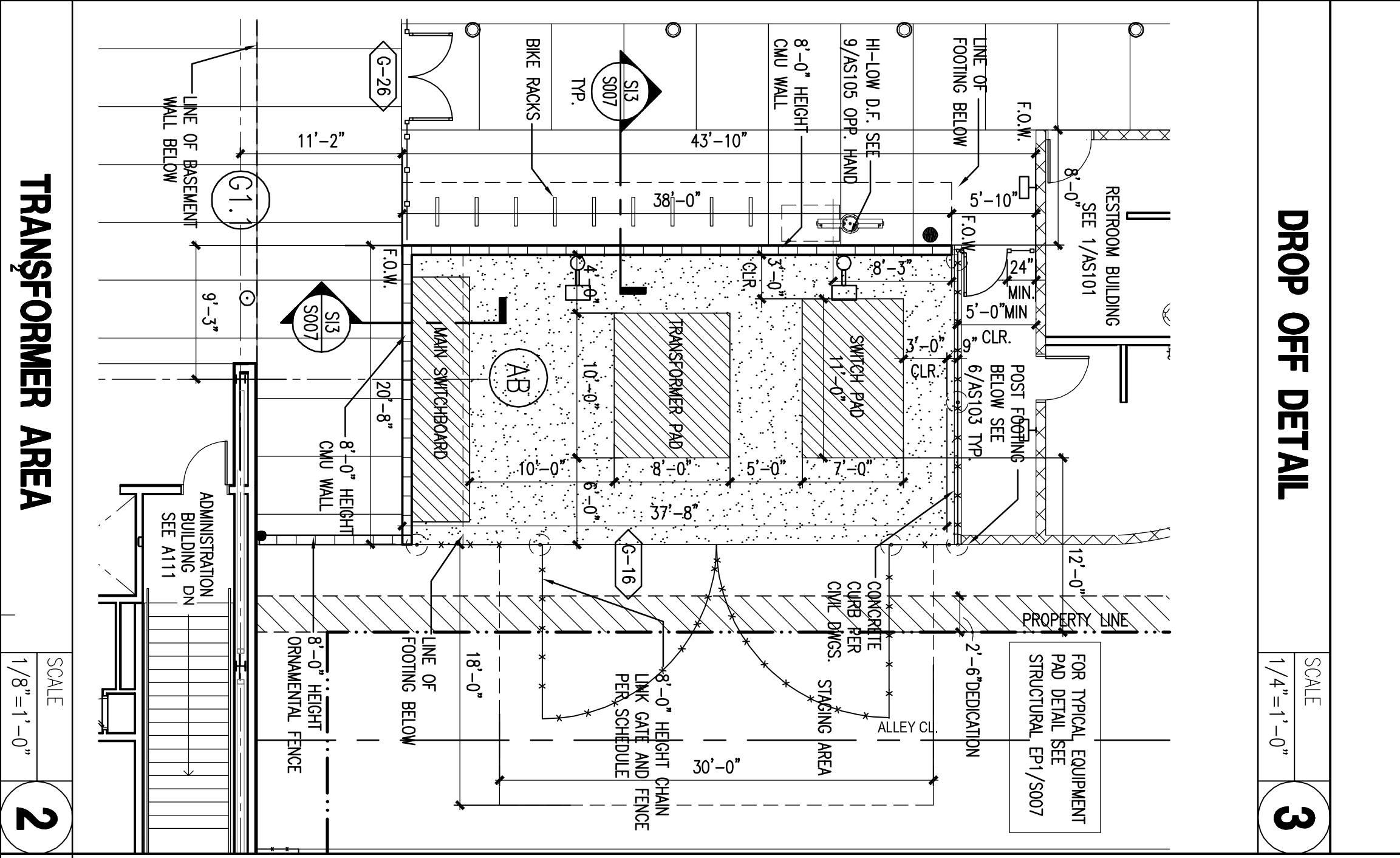
**DETECTABLE WARNING SURFACE**  
SCALE: 1/4"=1'-0"



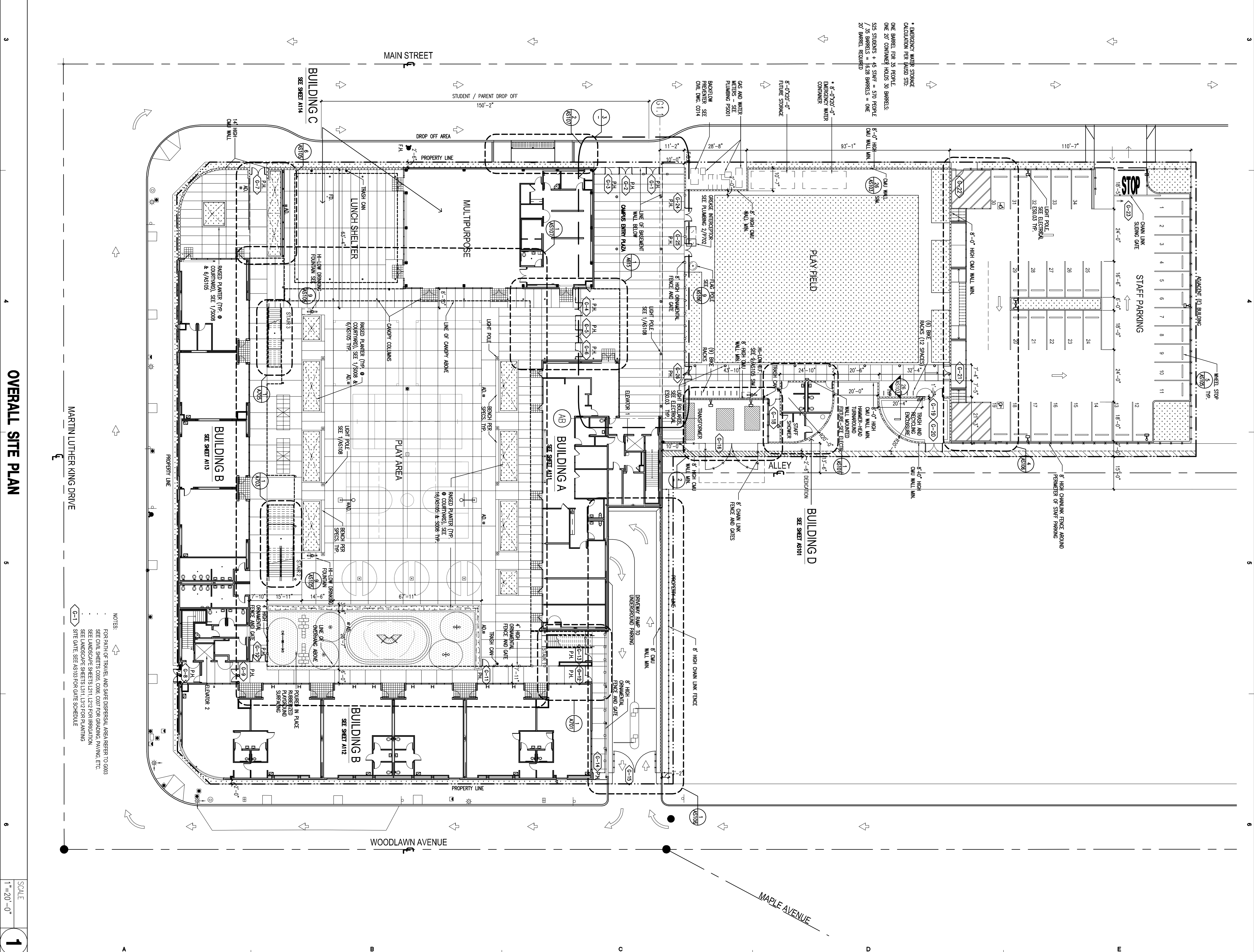
**PASSENGER LOADING SIGN**  
SCALE: 1/2"=1'-0"



**DROP OFF DETAIL**  
SCALE: 1/4"=1'-0"



**TRANSFORMER AREA**  
SCALE: 1/8"=1'-0"



**OVERALL SITE PLAN**  
SCALE: 1/20"=1'-0"

<p><b>gkkworks</b> ARCHITECTS</p> <p>155 South Fair Oaks Pasadena   CA 91105 626 666 6066 626 666 3940 fax</p>		<p><b>THE ACCELERATED SCHOOL</b></p>	
<p>Project Name: ACCELERATED CHARTER ELEMENTARY SCHOOL 3914 S. MAIN STREET LOS ANGELES, CA 90007</p>		<p>Agency Approval: DENISE TAYLOR, SUPERVISOR, LOS ANGELES SARBAN REGIONAL OFFICE APR. 16, 2013 DATE</p>	
<p>Checked By: V.P. Drawn By: C.G.</p>		<p>Revision/Issue:</p>	
<p>Sheet Title: OVERALL SITE PLAN</p>		<p>Product Number: AS100 Scale: 1"=20'-0"</p>	
<p>Sheet Number: 10113</p>		<p>© 2013 gkkworks. All Rights Reserved. NO PART OF THE CONTENTS OF THIS DOCUMENT MAY BE REPRODUCED OR TRANSMITTED IN ANY FORM OR BY ANY MEANS WITHOUT THE WRITTEN PERMISSION OF gkkworks.</p>	

