



October 14, 2014

Council File 13-1152-S1

Honorable City Council  
c/o Office of the City Clerk  
Los Angeles City Hall  
200 North Spring Street, Room 395  
Los Angeles, CA 90012

Dear Honorable Members,

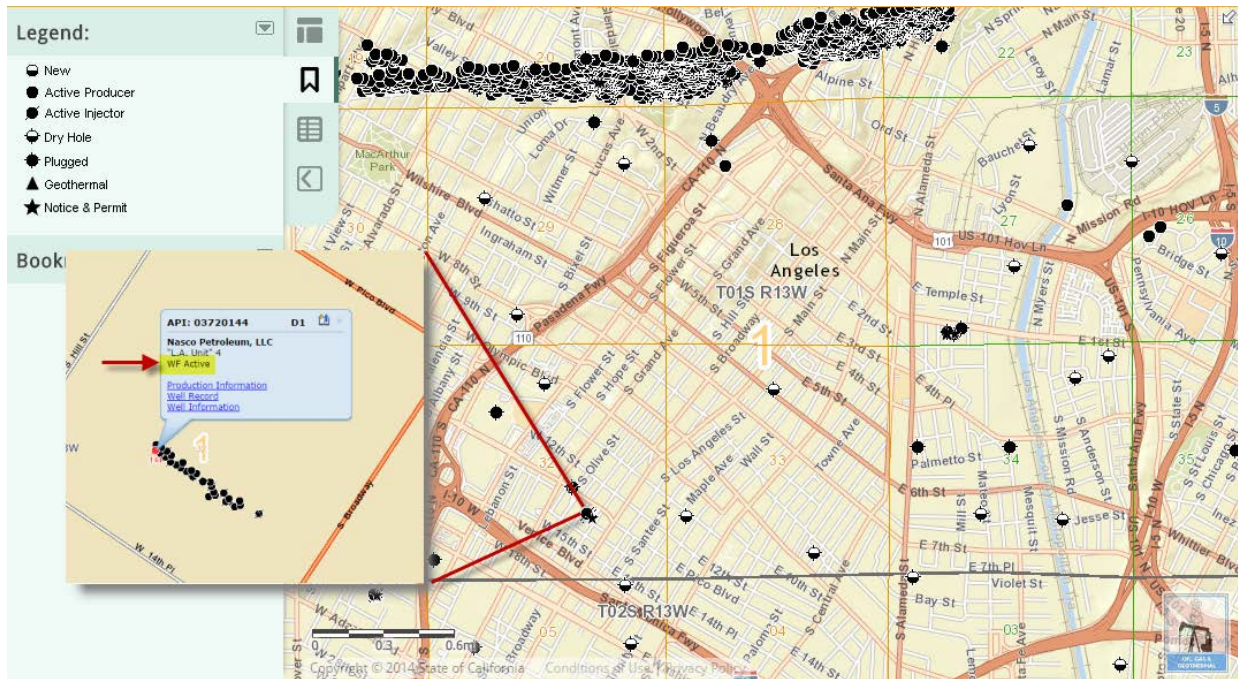
The Downtown Los Angeles Neighborhood Council requests that the following Community Impact Statement be added to Council File 13-1152-S1, regarding regulation of well stimulation and hydraulic fracturing in the City of Los Angeles.

### COMMUNITY IMPACT STATEMENT

The Downtown Los Angeles Neighborhood Council (“DLANC”) supports a moratorium on well stimulation, including hydraulic fracturing, and the use of waste disposal injection wells in the City of Los Angeles until the measures identified in the Motion are met. *See* Motion at p. 3-4. In addition, the Downtown Los Angeles Neighborhood Council urges the Los Angeles City Attorney, Mike Feuer, to take swift action in developing regulatory controls over hydraulic fracturing in the City of Los Angeles as requested by the Planning and Land Use Management Committee (“PLUMC”) on February 28, 2014. *See* PLUMC Report at p. 1. Furthermore, DLANC opposes any activity that could be characterized as well stimulation (including hydraulic fracturing) and use of waste disposal injection wells, within the boundaries of DLANC.

According to the Division of Oil, Gas & Geothermal Resources Well Finder (“DOGGR”) website, there are active wells within the boundary of DLANC’s jurisdiction.<sup>1</sup>

<sup>1</sup> <http://maps.conservation.ca.gov/doggr/index.html#>



Further, although there appear to be a number of plugged wells within DLANC’s jurisdiction, it is possible for plugged wells to be unplugged and put back into service. *See* “West Adams Oil Blues,” available at <http://boryanabooks.com/?p=4250> (reporting on an oil field located just south of Downtown Los Angeles that had previously contained 21 plugged wells that were shut down in the 1990s, but in 2005 7-10 wells were unplugged and put back into service); *see also* “EPA officers sickened by fumes at South L.A. oil field,” available at <http://www.latimes.com/local/la-me-1109-fumes-20131109-story.html>.

As stated in the Motion, hydraulic fracturing, acidizing, gravel packing, and other associated well-stimulation practices may threaten to contaminate drinking water supplies and contaminate the environment. Further, disposing wastewater into deep disposal wells has been found by scientists at the United States Geological Survey to increase seismic activity. *See* Motion at p. 2. In addition, the water used in hydraulic fracturing, acidizing, and gravel packing is permanently removed from the hydrological cycle due to contamination and as such, further reduces this natural resource at a time when water resources are limited due to the current drought.

Because Downtown Los Angeles is a densely populated neighborhood,<sup>2</sup> it is imperative that operation of wells located in Downtown Los Angeles be adequately regulated and monitored to protect the public from being harmed by spills, leaks, or blowouts. Indeed, in West Adams, lack of adequate regulation led to nearby residents getting ill, developing respiratory problems, headaches, and nausea. *See* “West Adams Oil Blues,” available at <http://boryanabooks.com/?p=4250> (“Any thought that the neighbors’ symptoms were exaggerated were dispelled when, on November 6, federal inspectors from the Environmental Protection Agency arrived, and were sickened by fumes. Jared Blumenfeld, the EPA regional administrator for the Pacific Southwest, personally led

<sup>2</sup> Accordingly to the LA Times, Downtown Los Angeles has a population of approximately 4,770 people per square mile. *See* <http://maps.latimes.com/neighborhoods/population/density/neighborhood/list/>

the team. Afterward he told the LA Times: "I've been to oil and gas production facilities throughout the region, but I've never had an experience like that before. We suffered sore throats, coughing and severe headaches that lingered for hours.").

Accordingly, until the measures identified in the Motion are met, the Downtown Los Angeles Neighborhood Council supports a moratorium on well stimulation, including hydraulic fracturing, and the use of waste disposal injection wells in the City of Los Angeles. In addition, DLANC opposes any activity that could be characterized as well stimulation (including hydraulic fracturing) and use of waste disposal injection wells, within the boundaries of DLANC.

This Community Impact Statement is based on the action taken at the regularly scheduled Board of Directors meeting on October 14, 2014, when the Downtown Los Angeles Neighborhood Council adopted the following motion by a vote of 13 yes, 0 no, 3 abstaining and directed that a Community Impact Statement be filed reflecting its position.

**Motion: "The Downtown Los Angeles Neighborhood Council supports a moratorium on well stimulation, including hydraulic fracturing, and the use of waste disposal injection wells in the City of Los Angeles until the measures identified in the Motion are met. In addition, the Downtown Los Angeles Neighborhood Council urges the Los Angeles City Attorney, Mike Feuer, to take swift action in developing regulatory controls over hydraulic fracturing in the City of Los Angeles as requested by the Planning and Land Use Management Committee on February 28, 2014. Furthermore, DLANC opposes any activity that could be characterized as well stimulation (including hydraulic fracturing) and use of waste disposal injection wells, within the boundaries of DLANC."**

Sincerely,



Patricia Berman  
DLANC President

Sincerely,



Eric R. Garcia  
DLANC Community Impact Committee Chair