

Date: 8/6/14
Submitted in E&E Committee
Council File No: 14-1056
Item No.: 1
Deputy: Adam R. Lid

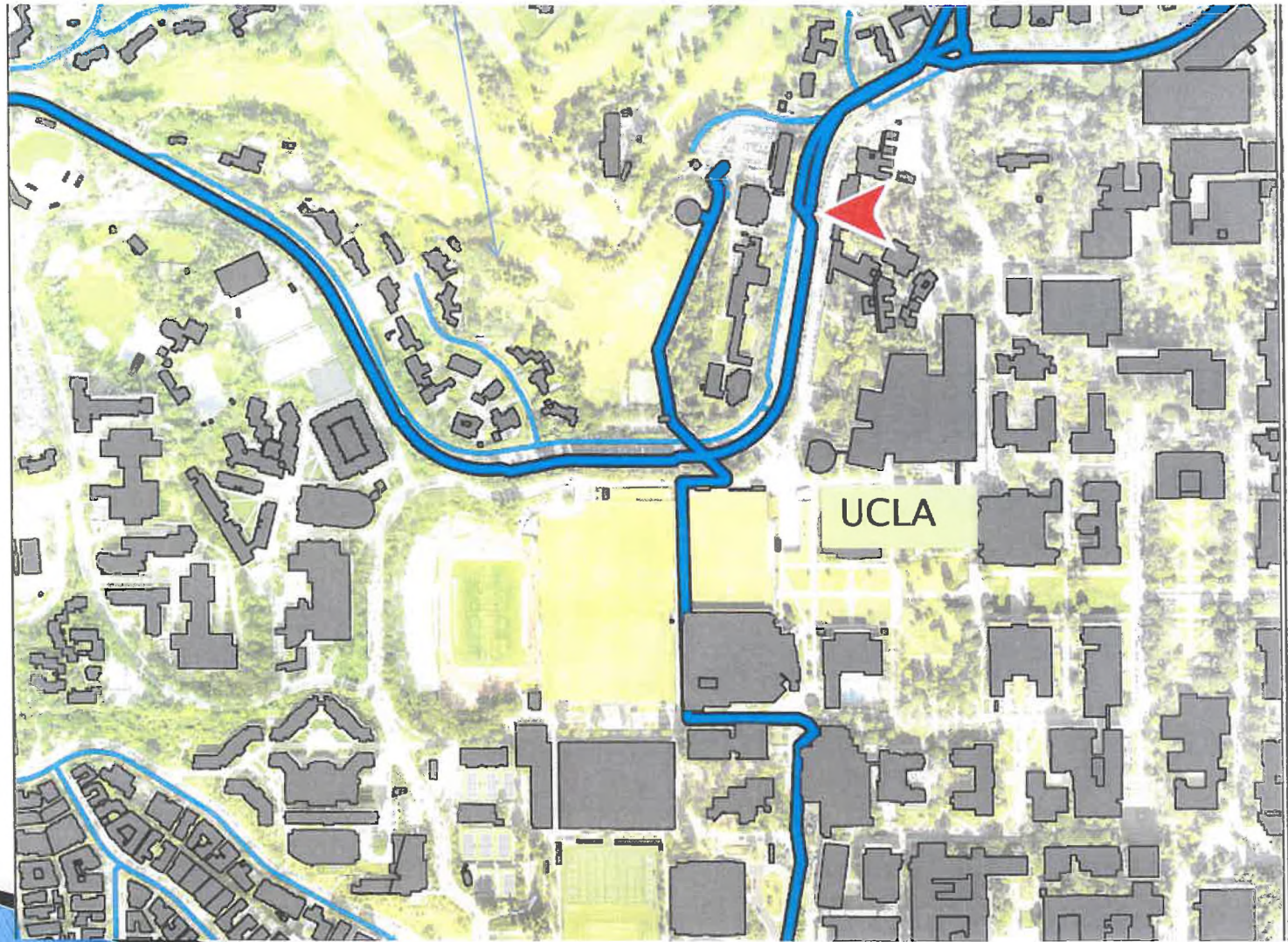
Sunset - UCLA Trunk Line Break

Council E&E Committee

August 6, 2014

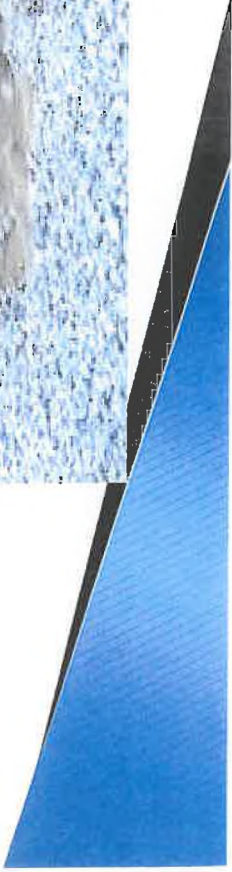


Site Location

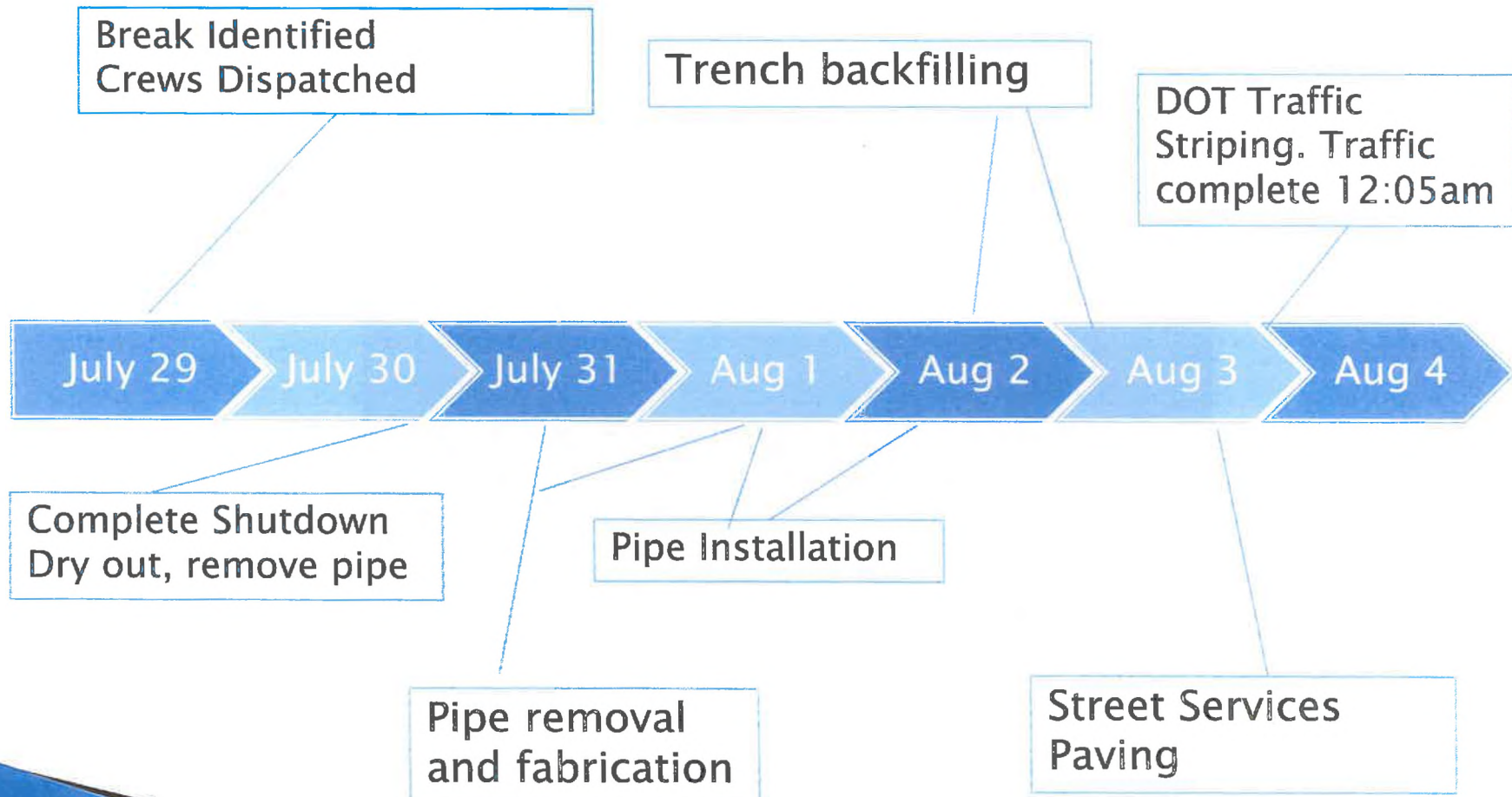




Breach at connection between lines



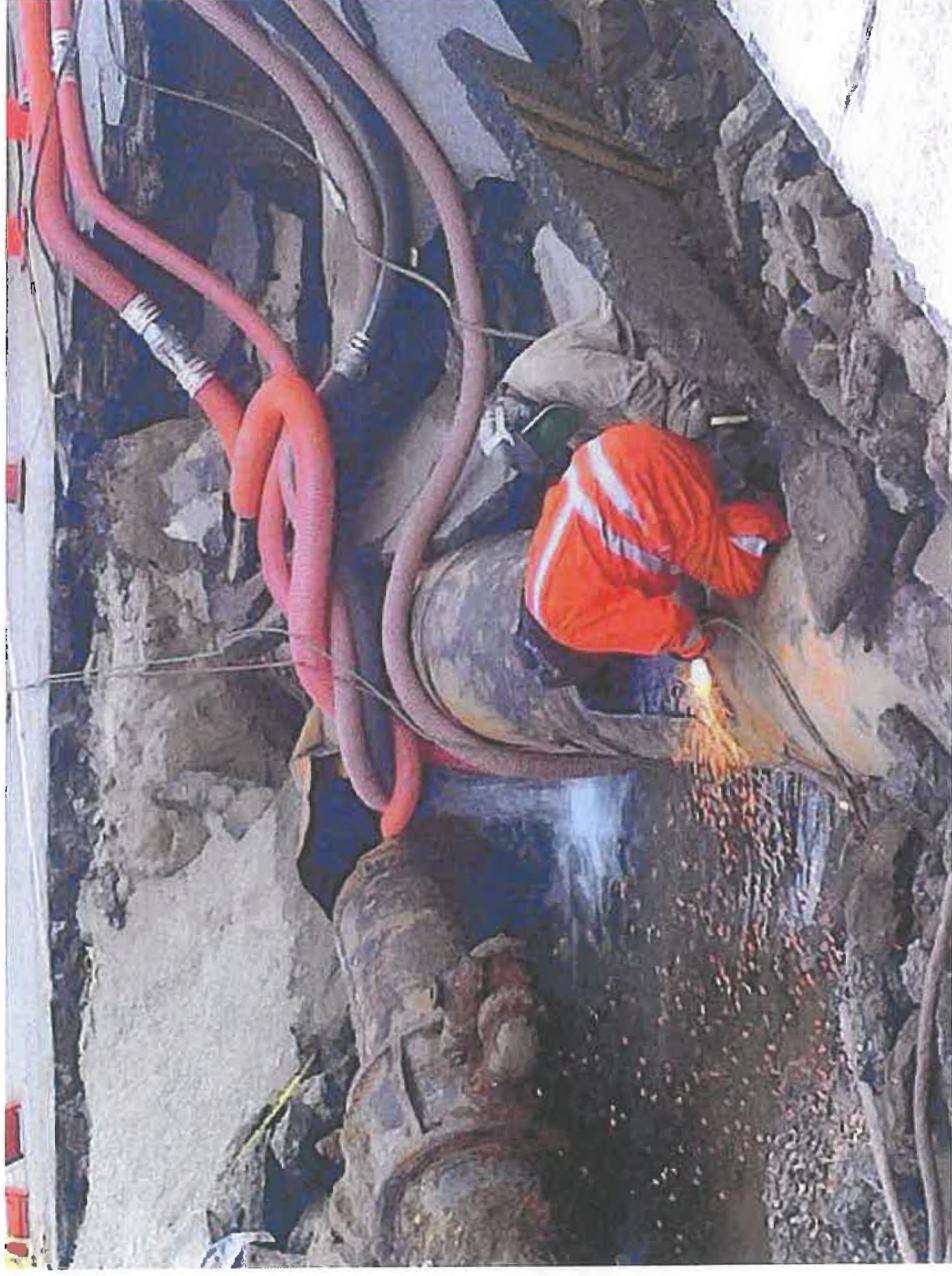
Timeline



Controlling Water Flow



Welders preparing sections

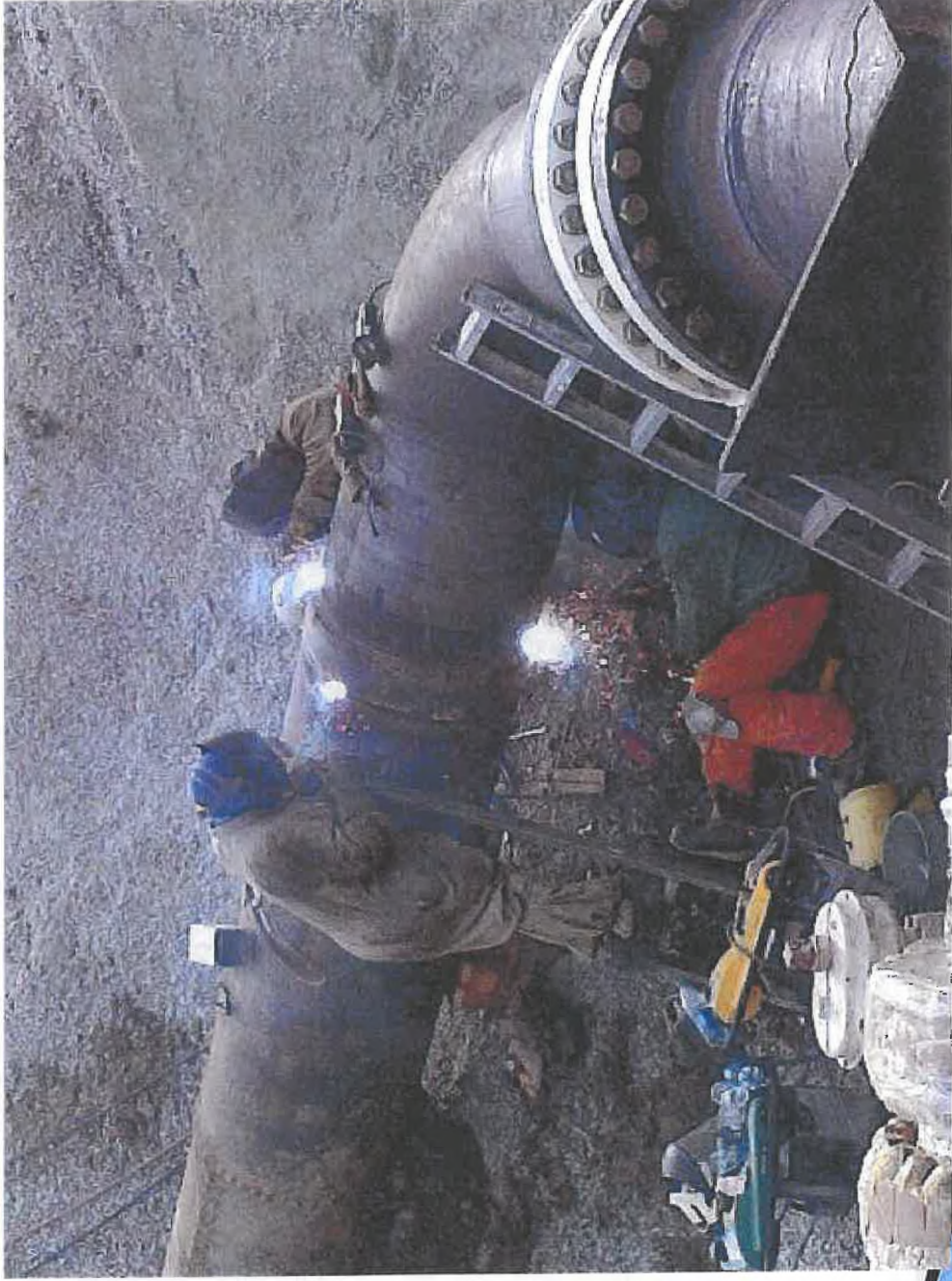




Straight Section of pipe



**Welding high pressure water pipe
is a highly skilled trade**



Wrapping it up.

Modern materials protecting against corrosion.



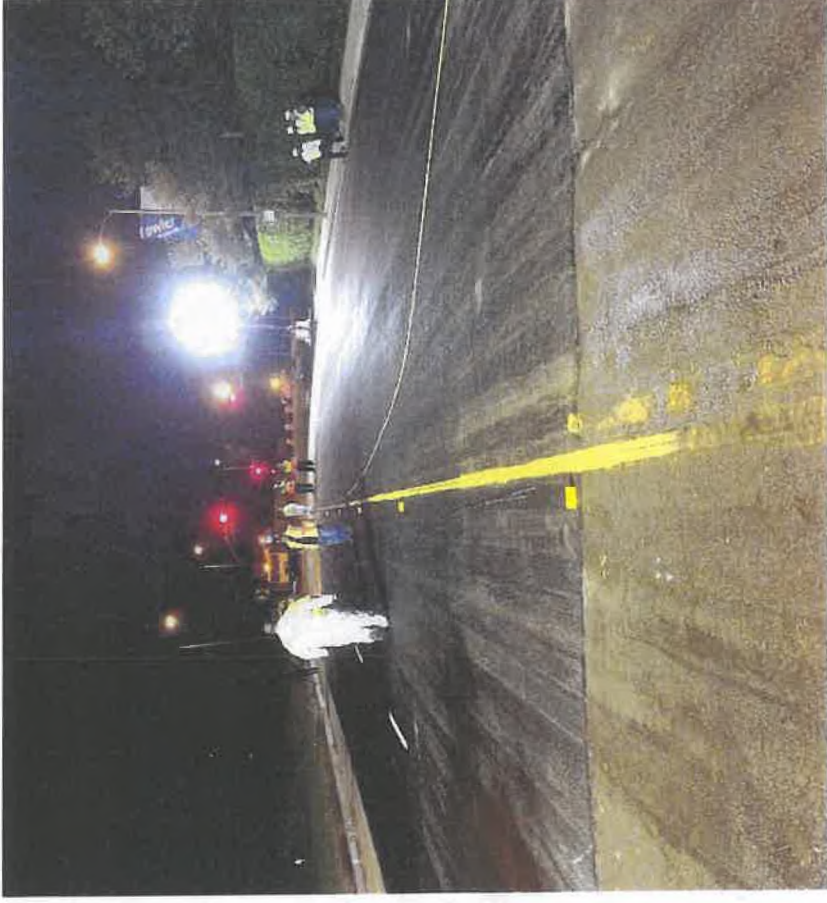
Nearly completed backfilling



Paving - Sunday afternoon.



Striping- Complete 12:05am



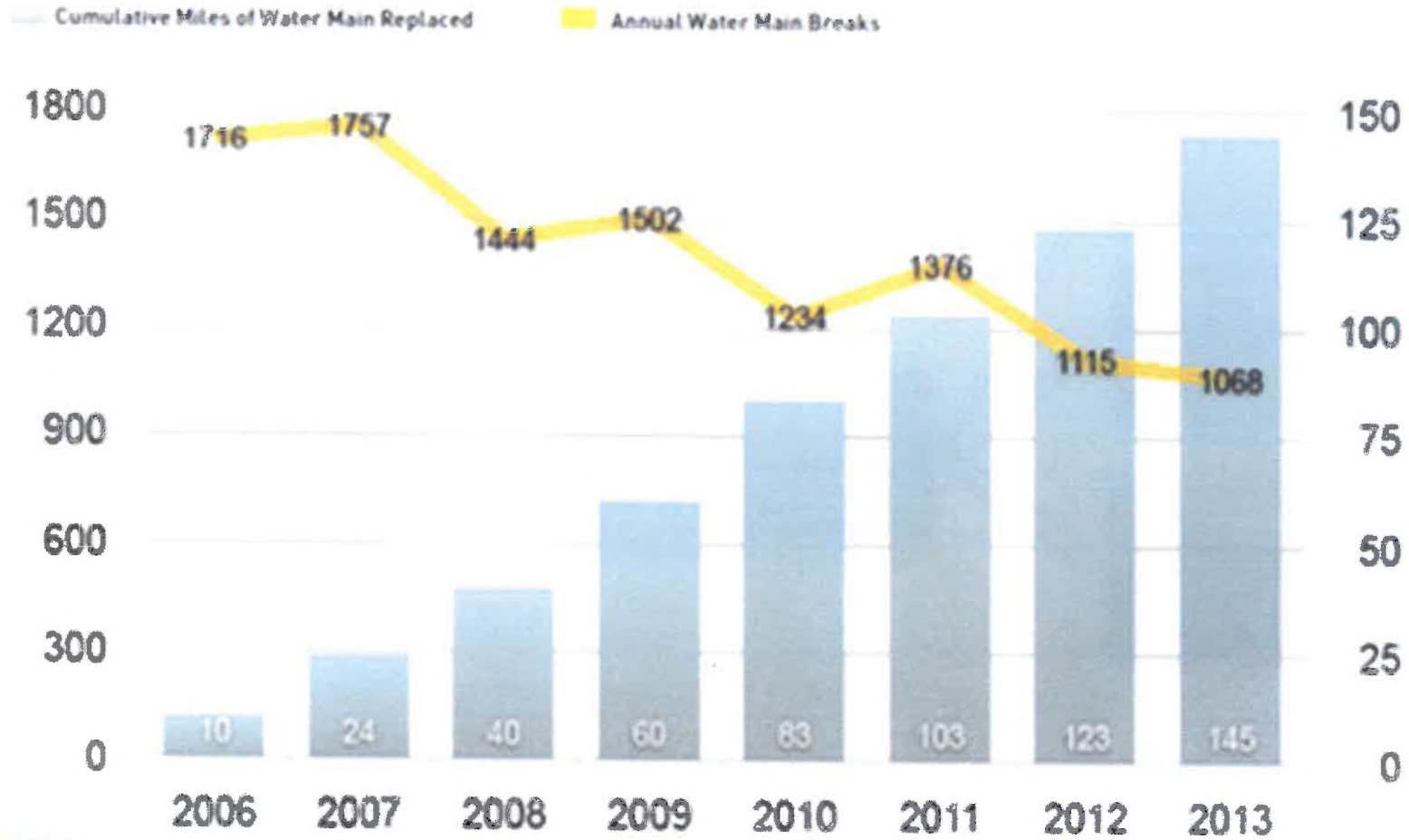
It takes the Whole Team



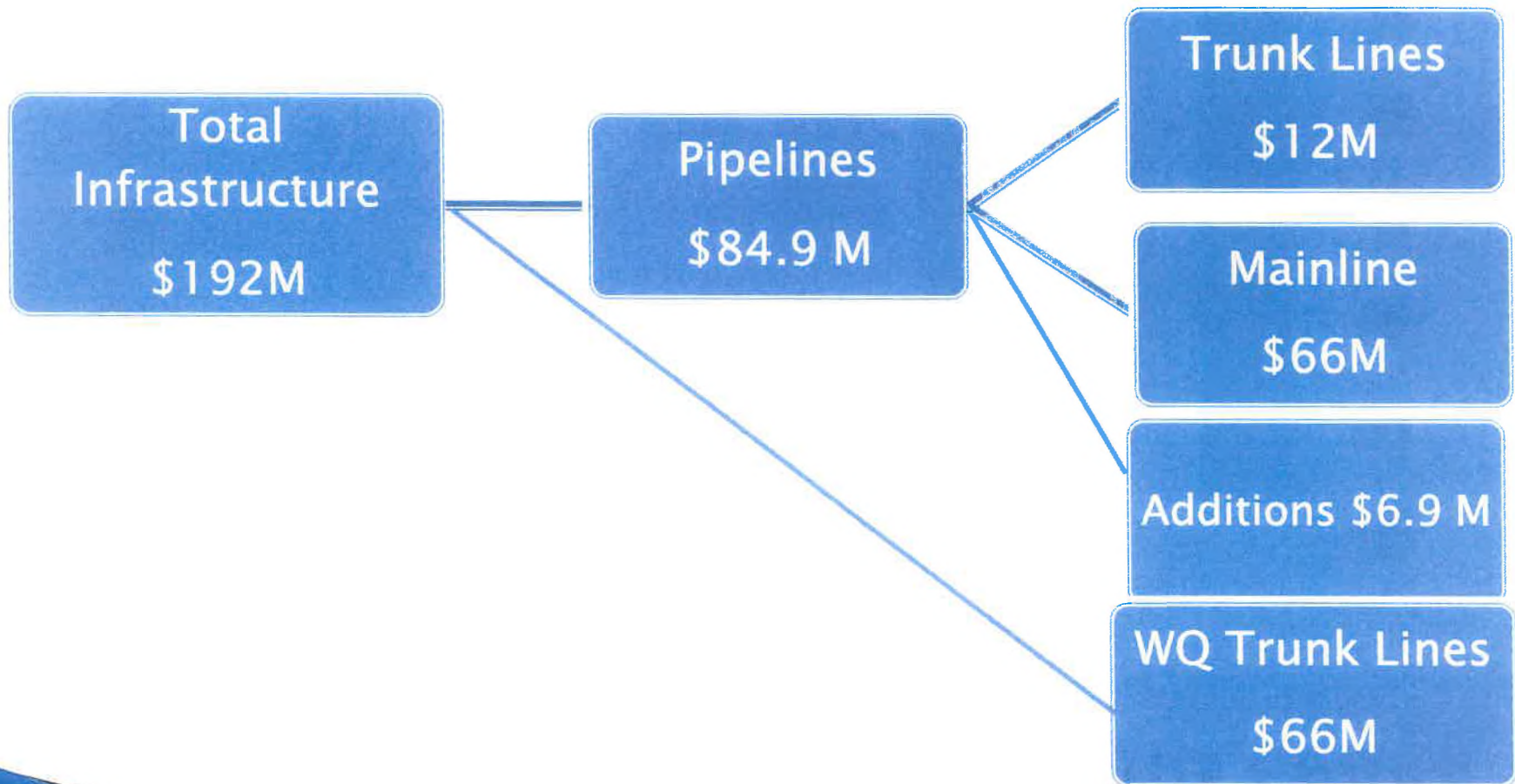
“Pin Hole” Corrosion and Pitting



Main Replacement Levels and Leaks



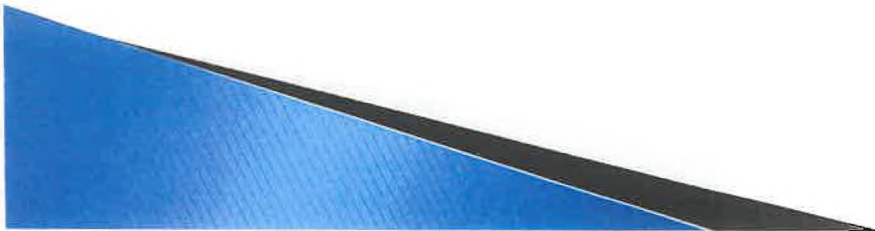
Pipeline Investments 2014-15



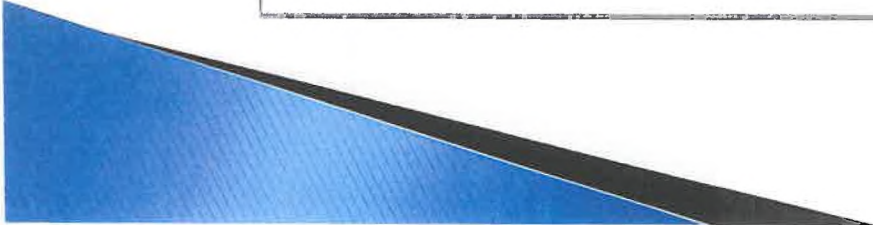
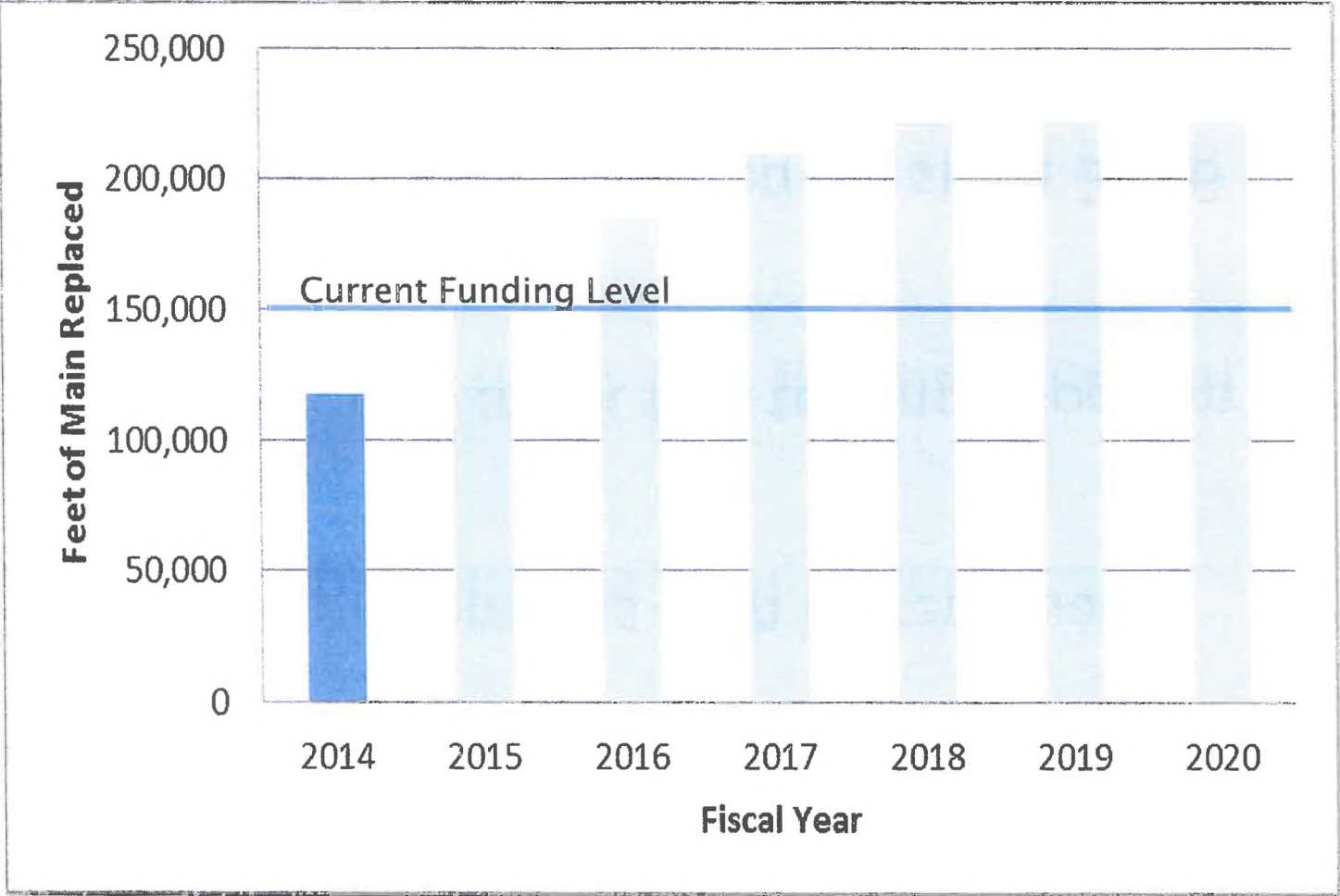
Pipeline Replacement Strategy

- ▶ Trunk line replacement based on risk analysis
- ▶ Additional replacements with Water Quality Program
- ▶ Restart controlled trunk line testing program

- ▶ Mainline replacement ramped up since 2006
- ▶ Continue ramp up to 170 year replacement cycle
- ▶ Priority based on several parameters



Mainline Replacement Program



New Pipeline Technology

- ▶ Monitoring state of the industry testing techniques
- ▶ Earthquake resistant pipe in vulnerable locations
- ▶ Corrosion protection including coatings and impressed current.
- ▶ “Plastic” pipe in highly corrosive environments



