

# CITY OF LOS ANGELES

CALIFORNIA



ERIC GARCETTI  
MAYOR

April 8, 2015

## OFFICE OF THE BOARD OF PUBLIC WORKS

200 NORTH SPRING STREET  
ROOM 361, CITY HALL  
LOS ANGELES, CA 90012  
(213) 978-0261  
(213) 978-0278 Fax

FERNANDO CAMPOS  
EXECUTIVE OFFICER

<http://www.bpw.lacity.org>

## BOARD OF PUBLIC WORKS MEMBERS

KEVIN JAMES  
PRESIDENT

MONICA RODRIGUEZ  
VICE-PRESIDENT

MATT SZABO  
PRESIDENT PRO TEMPORE

MICHAEL DAVIS  
COMMISSIONER

HEATHER MARIE REPENNING  
COMMISSIONER

15-0081

**Council Hearing – 4/15/15**  
(BSL of 1/22/15)

City Council  
Room 395  
City Hall

Honorable Members:

Inasmuch as no one protested the assessments pursuant to the hearing scheduled this date, in connection with the maintenance for Figueroa Street and Venice Boulevard - Street Lighting Maintenance Assessment District, the Board of Public Works recommends that the assessments therefore be confirmed.

Respectfully submitted,

Fernando Campos  
Executive Officer  
Board of Public Works

FC/TS:mp

cc: Chairperson, Public Works Committee  
Director, Bureau of Street Lighting  
City Engineer



APR - 8 2015

## ORDINANCE OF INTENTION

  
Executive Officer  
Board of Public Works

15-0081  
CD 9 & 14

COMMUNICATION FROM THE BUREAU OF STREET LIGHTING and ORDINANCE OF INTENTION FIRST CONSIDERATION relative to establishing a hearing date for the maintenance of the Figueroa Street and Venice Boulevard Street Lighting District.

Recommendations for Council action, SUBJECT TO THE APPROVAL OF THE MAYOR:

1. ADOPT the report of the Director, Bureau of Street Lighting, dated January 22, 2015.
2. PRESENT and ADOPT the accompanying ORDINANCE OF INTENTION setting the date of **APRIL 15, 2015** as the hearing date for the maintenance of the Figueroa Street and Venice Boulevard Street Lighting District, in accordance with Proposition 218, Articles XIII C and XIII D of the California Constitution and Government Code Section 53753.

Fiscal Impact Statement: The Bureau of Street Lighting reports that if adopted, \$2,804.10 will be collected annually starting with tax year 2014-15 that will go into a dedicated street lighting maintenance assessment account for the use in the operation and maintenance of this street lighting system.

(Board of Public Works Hearing Date: April 8, 2015)

(ord of intent in Ccl. on 2-11-15)

cc: City Engineer  
Bureau of Street Lighting  
Principal Clerk, City Clerk  
Councilmember Price  
Councilmember Huizar

**DEPARTMENT OF PUBLIC WORKS  
BUREAU OF STREET LIGHTING**

**DATE**        JAN 22 2015

**C.D. 9 & 14**

Honorable City Council  
of the City of Los Angeles

**FIGUEROA STREET AND VENICE BOULEVARD  
STREET LIGHTING MAINTENANCE ASSESSMENT DISTRICT**

---

This report submits the proposed Ordinance of Intention to institute maintenance assessment proceedings for the above street lighting project.

**RECOMMENDATIONS**

1. Council adopt this report and the Ordinance of Intention, and that the proceedings be conducted in accordance with Sections 6.95 - 6.127 of the Los Angeles Administrative Code, Section 53753 of the California Government Code, and Proposition 218 (Articles XIII C and XIII D of the California Constitution). This includes Council holding a Public Hearing for the proposed District Diagram with City page number **14271**.
2. Upon Council adoption of the Ordinance of Intention, the Bureau of Street Lighting be instructed to: Mail notices of the assessment ballot proceedings, and Mail assessment ballots (as required by Prop. 218) to the property owners in the lighting district.
3. Upon completion of Item 2 above, the City Clerk be instructed to conduct the assessment ballot proceedings (i.e. count, certify, and report the results of the assessment ballot proceedings to the Council).
4. Following the conclusion of the final public hearing, if a project has weighted "YES" votes equal to, or in excess of weighted "NO" votes, the Council shall deny the appeals, confirm the maintenance assessments, and adopt the Final Ordinance levying the assessments. If the weighted "NO" votes are in excess of weighted "YES" votes, Council will abandon the lighting district and proceedings in accordance with Proposition 218; and the affected street lighting system shall be removed from service or not be constructed.
5. A copy of this report be provided to each affected Council office and the Mayor's Office of Economic Development.

The passage of Proposition 218 on November 5, 1996, requires a vote of the property owners prior to Council confirming and levying the assessments for maintenance. Upon adoption of the transmitted Ordinance of Intention, the Council shall set a date for hearing appeals and the last day to receive completed assessment ballots. A hearing to be held by the Board of Public Works will be scheduled at least one week prior to the date of the public hearing for the City Council to review and resolve any appeals concerning the proposed maintenance assessments – as specified in the Engineer's Report. If the assessment ballot proceeding as required by Proposition 218 approves these assessments, the City Council may confirm and levy the assessments. If levied, the administration of this district may be combined with that of another district or districts in the future as provided in the Ordinance of Intention. Protests that are received, as described in the Administrative Code, are for the consideration of the Council, but are not binding. Only a weighted majority vote against the assessment is binding.

The assessments to be levied to pay for the cost and expenses of the work or improvements in the proposed **FIGUEROA STREET AND VENICE BOULEVARD** Street Lighting Maintenance Assessment District (or Sidewalk Maintenance Assessment District) fall within the (e)7 exemption of Prop 26. As set forth in the accompanying Ordinance of Intention, said assessments will be imposed in accordance with the provisions of Article XIID of the California Constitution.

In accordance with Council Policy adopted on December 11, 1998, the Bureau of Street Lighting will cast ballots in favor of the assessments for all Council controlled public properties in the district.

### SUMMARY

TOTAL STREETLIGHTS:	13
AFFECTED PARCELS:	<del>2</del> 6
TOTAL ASSESSMENTS:	\$2,804.10
TAX YEAR:	2014/2015
TYPE OF PROJECT:	PROPOSED PRIVATE DEVELOPMENT PROJECT

### TRANSMITTALS

1. Ordinance of Intention, approved as to form and legality by the City Attorney, for the proposed assessment district.
2. Diagram delineating those lands proposed to be assessed.
3. Proposed assessment roll.
4. Engineer's report as required by Proposition 218.

Report prepared by:  
Assessment Engineering Division  
Proposition 218 Compliance Section  
Mark Sibley, Improvement Assessor  
Ruben Flamenco, P.E., Division Manager

Respectfully submitted,

*Ruben Flamenco* for  
Ed Ebrahimian, Director  
Bureau of Street Lighting

PRIOR TO THE FOLLOWING DATES, THE LISTED  
PARCELS WERE ASSESSED UNDER THE REFERENCE  
NUMBERS AS SHOWN:

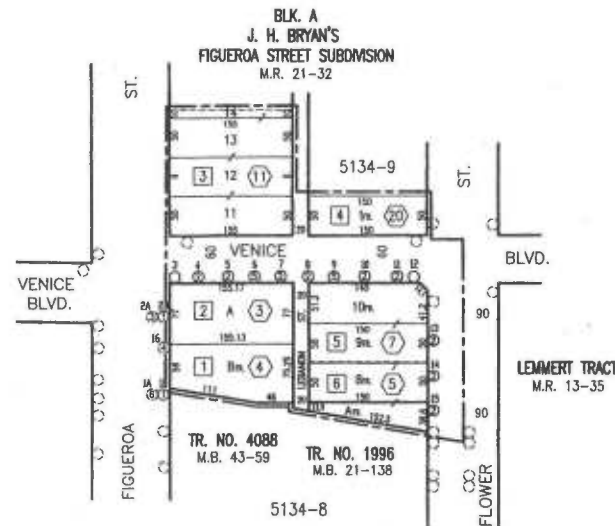
[illegible]

5134	B.9
C.M.B.	Page(s)

DISTRICT OUTLINED BY 24/1/17  
DISTRICT CHECKED BY Ruben Flamenco  
APPROVED JANUARY 21 2015  
Ed Ebrahimian, Director  
Bureau of Street Lighting  
By Ruben Flamenco FOI  
Engineer

In Serv.	Date	by	D.M.	126A205
Drawn	12-18-14	Q.L.	W.D.	Plan
Checked	12-18-14	W.D.	BR003249	
362 Thomas Guide Page		534	Grid	D6
L.D.		Page 14271		Sheet No. 1 of 1

H:\Data\DFPCSD\CAD\autoCAD diagrams\figueras-venice.dwg Jun 13, 2015 - 1:00pm



FOR THE FURNISHING OF ELECTRIC ENERGY & MAINTENANCE FOR  
THE LIGHTING OF SAID DISTRICT IN THE CITY OF LOS ANGELES

ED EBRAHIMIAN, DIRECTOR - BUREAU OF STREET LIGHTING

THE EXTERIOR BOUNDARIES OF THE ASSESSMENT DISTRICT ARE SHOWN

CITY CLERK BY DEPUTY CITY CLERK  
COUNCIL FILE NO.

- |  |                                     |  |        |
|--|-------------------------------------|--|--------|
|  | Indicates L.A. County APN           |  |        |
|  | Indicates L.A. City Assessor Number |  |        |
|  | Indicates New Electroliner          | CD 953C W/4 ARM 200W EQ                  | B.Z. 3 |
|  | Indicates New Electroliner          | 15' OSGIC Deck Coaches King Pk           | B.Z. 3 |
|  | Indicates New Electroliner          | M/3 King Acacia Lam. Arm w/Yale 2 Pulver | B.Z. 3 |
|  | Indicates New Electroliner          | CD 953C W/4 ARM 200W EQ                  | B.Z. 3 |
|  | Indicates New Electroliner          | KING LUMINARE K20A, MULT. C/W VSOR       | B.Z. 2 |
|  | Indicates New Equipment             | KING LUMINARE K20A, MULT. C/W VSOR       | B.Z. 2 |
|  | Indicates Future Electroliner       |  | B.Z.   |
|  | Indicates Adjacent System           |  |        |

Page 11

FIGUEROA ST. &amp; VENICE BLVD. L.D.

Page 14271 Sheet No. 1 of 1