

**DECLARATION OF BONNIE THORNE**

I, Bonnie Thorne, declare as follows:

1. I am a Paralegal employed at the law firm of Remy Moose Manley, LLP (“RMM”), attorneys of record for the City of Los Angeles. The statements set forth in this declaration are within my personal knowledge, except as to those matters which are stated on information and belief, and, as to those matters, I believe them to be true. If called upon to testify as to these statements, I could and would so competently testify.

2. On May 18, 2018, at the request of its client the City of Los Angeles, RMM sent a California Public Records Act request (“PRA request”), via e-mail and regular mail, to the Santa Monica Mountains Conservancy under Government Code section 6250 *et seq.*, with respect to the Eastern Santa Monica Mountains Habitat Linkage Planning Map, adopted on January 23, 2017, through Resolution 17-01, and updated periodically thereafter. Attached hereto as **Exhibit A** (Pages SMMCPRA\_001 through 003) is a true and correct copy of the PRA request contained in the regularly-maintained files of RMM to which I have access.

3. On May 23, 2018, Staff Counsel, Spencer Eldred, e-mailed our office on behalf of the Santa Monica Mountains Conservancy (“SMMC”) in response to the PRA request. A true and correct copy of Mr. Eldred’s e-mail addressed to me at my e-mail address is attached hereto as **Exhibit B** (Page SMMCPRA\_004). In his e-mail, Mr. Eldred indicated that some responsive documents are publically available and directed our office to SMMC’s webpage (<http://smmc.ca.gov/attachment.asp?agendaid=549>) to access the January 23, 2017 agenda attachments for item no. 13. I personally opened the link provided in Mr. Eldred’s email, downloaded the four documents pertaining to the January 23, 2017 agenda, item no. 13, and saved them in RMM’s files. True and correct copies of the documents I downloaded as directed, are attached hereto as **Exhibit C** (Pages SMMCPRA\_005 through 010).

4. On May 24, 2018, Mr. Eldred provided our office with additional documents responsive to the PRA request. The files were provided in shapefile format requiring ESRI software to open and

view the files. A true and correct copy of Mr. Eldred's e-mail, without the attachments, is attached hereto as **Exhibit D** (Page SMMCPRA\_011).

5. On May 30, 2018, Mr. Eldred provided our office with a formal written response to the PRA request via e-mail on which I was copied; a true and correct copy of that email and e-mail attachment is attached hereto as **Exhibit E** (Pages SMMCPRA\_012 through 013).

6. On June 4, 2018, Mr. Eldred e-mailed our office indicating that SMMC had found additional documents to supplement their prior responses, and that the documents would follow separately. Attached hereto as **Exhibit F** (Page SMMCPRA\_014) is a true and correct copy of Mr. Eldred's e-mail of which I was copied on.

7. On June 4, 2018, Andrea Leisy, attorney of record for the City of Los Angeles, received seven e-mails from Mr. Eldred, collectively containing fourteen additional documents to supplement SMMC's prior response to the PRA request. Ms. Leisy forwarded those e-mails to me upon receipt. I then saved those documents in RMM's files. Attached hereto as **Exhibit G** (Pages SMMCPRA\_015 through 041) are true and correct copies of those documents.

8. The documents provided by the SMMC in response to the PRA request, and attached as exhibits hereto, are in the format provided to our office by the SMMC, and have not been altered in any way.

I declare under penalty of perjury of the laws of the State of California that the foregoing is true and correct to the best of my knowledge, and this declaration was executed on June 18, 2018, at Sacramento, California.

A handwritten signature in cursive script, appearing to read "B. Thorne", written in black ink.

---

BONNIE THORNE



# **EXHIBIT A**



Andrea K. Leisy  
aleisy@rmmenvirolaw.com

May 18, 2018

**VIA ELECTRONIC & U.S. MAIL**  
[dash.stolarz@mrca.ca.gov](mailto:dash.stolarz@mrca.ca.gov)

Rorie A. Skei  
Chief Deputy Director  
Santa Monica Mountains Conservancy  
Ramirez Canyon Park  
5750 Ramirez Canyon Road  
Malibu, California 90265

Dash Stolarz  
Public Affairs & Media Inquiries  
Santa Monica Mountains Conservancy  
Ramirez Canyon Park  
5750 Ramirez Canyon Road  
Malibu, California 90265

**Re: California Public Records Act Request - Eastern Santa Monica  
Mountains Habitat Linkage Planning Map**

Dear Ms. Skei and Ms. Stolarz,

I am writing on behalf of the City of Los Angeles (City) to make a request under the California Public Records Act (Gov. Code, § 6250 et seq.), and Article One, section 3(b) of the California Constitution (constitutional right to public records), directed at the Santa Monica Mountains Conservancy (SMMC) with respect to the Eastern Santa Monica Mountains Habitat Linkage Planning Map, adopted on January 23, 2017 through Resolution 17-01, and updated periodically thereafter (the Map). Specifically, the City requests copies of the following public record documents:

1. All records that constitute, refer, pertain or relate to the determination and drawing of the delineations of the Map, including, but not limited to, the categories of input data used for the linkage design, if any, and updates thereto.
2. All records that constitute, refer, pertain or relate to defining and drawing "Habitat Blocks" and "Wildlife Corridors" on the Map, including, but not limited to, the species and ecological community types considered, if any, and updates thereto.

Rorie A. Skei  
 Dash Stolarz  
 May 18, 2018  
 Page 2

3. All records that constitute, refer, pertain or relate to the areas of the Map delineations that are not definitive, including updates thereto.
4. All records that constitute, refer, pertain or relate to efforts to “ground-truth” and verify the “habitat block boundaries and connections” depicted on the Map, including updates thereto.
5. All records that constitute, refer, pertain or relate to the “accumulated staff knowledge” upon which the delineations of the Map are based, including updates thereto.
6. All records that constitute, refer, pertain or relate to the purpose and intended use, including future use, of the Map by the SMMC, the City of Los Angeles, private entities, member of the public, or other government agencies.
7. All records that constitute, refer, pertain or relate to evidentiary support for the Map delineations, including any habitat connectivity studies, biological resource surveys or similar evidence, if any, and updates thereto.

The CPRA broadly defines “public record” as any “writing” that contains “information relating to the conduct of the public’s business that is prepared, owned, used, or retained by any state or local agency regardless of physical form or characteristics.” (Gov. Code, § 6252, subd. (d).) A “writing” means “any handwriting, typewriting, printing, photostating, photographing, photocopying, transmitting by electronic mail or facsimile, and every other means of recording upon any tangible thing any form of communication or representation, including letters, words, pictures, sounds, or symbols, or combinations thereof, and any record thereby created, regardless of the manner in which the record has been stored.” (*Ibid.* subd. (g).) Public records include “communications related to the conduct of public business ... sent or received using a personal account.” (*City of San Jose v. Superior Court* (2017) 2 Cal.5th 608, 625.)

If, for some reason, the SMMC withholds any documents responsive to the City’s request the City asks that the SMMC separately identify the record(s) withheld and provide the City with a written explanation of the claimed justification for withholding the record(s), as required by section 6255 of the Government Code. (See Gov. Code, § 6255, subd. (a); *International Federation of Professional & Technical Engineers, Local 21, AFL-CIO v. Super. Ct.* (2007) 42 Cal. 4th 319, 329.) Please include a factual basis for asserting the exemption. If a court finds that public records have been improperly withheld, the City will seek attorney fees pursuant to Government Code section 6259. (See Gov. Code, § 6259, subd. (d).)

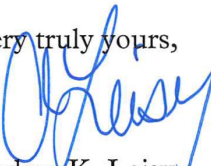
The City will reimburse SMMC for all reasonable copying and printing costs, including the “direct costs of duplication.” (*North County Parents v. Department of Education*

Rorie A. Skei  
Dash Stolarz  
May 18, 2018  
Page 3

(1994) 23 Cal.App.4th 144, 148 [direct cost “does not include the ancillary tasks necessarily associated with the retrieval, inspection and handling of the file from which the copy is extracted”].) The City is also agreeable to accepting copies of documents via email, on a thumb/jump drive, or by CD. Please provide me with a quote of any charges prior to providing the copies.

I look forward to receiving your initial response within 10 days as required by section 6253, subdivision (c) of the Government Code. Thank you in advance for your cooperation and please contact me if you have any questions.

Very truly yours,



Andrea K. Leisy

cc: Robert Mahlowitz

# **EXHIBIT B**

**From:** Spencer Eldred  
**To:** [Bonnie Thorne](#); [Andee Leisy](#)  
**Cc:** [Kathryn A. Ramirez](#)  
**Subject:** Re: EASTERN SANTA MONICA MOUNTAINS HABITAT LINKAGE PLANNING MAP  
**Date:** Wednesday, May 23, 2018 10:51:23 AM

---

Dear Ms. Leisy and Ms. Thorne:

The Santa Monica Mountains Conservancy (SMMC) is in receipt of your public records act request.

A few items are publically available on the SMMC website. Please see item 13 from this agenda: <http://smmc.ca.gov/attachment.asp?agendaid=549>. However, there are a few other documents not posted on the website. I would like to ask you a few follow-up questions on how best to deliver the documents in your request.

Do one of you have time this week or next for a quick call? I will be sending a formal letter later this week.

Thank you.

Sincerely,  
Spencer Eldred

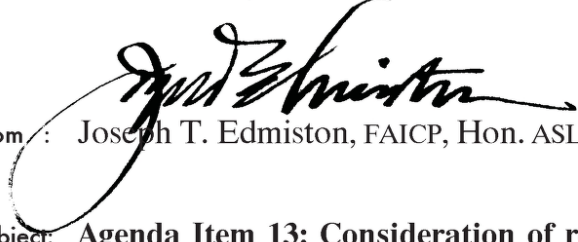
*Spencer Eldred, Staff Counsel  
Mountains Recreation and Conservation Authority  
570 West Avenue 26, Suite 100  
Los Angeles, CA 90065  
 [\(323\) 221-9944, ext. 181](tel:3232219944)*

# **EXHIBIT C**

# Memorandum

To : The Conservancy  
The Advisory Committee

Date: January 23, 2017



From : Joseph T. Edmiston, FAICP, Hon. ASLA, Executive Director

Subject: **Agenda Item 13: Consideration of resolution adopting Eastern Santa Monica Mountains Habitat Linkage Planning Map, City of Los Angeles.**

Staff Recommendation: That the Conservancy adopt the attached resolution adopting an Eastern Santa Monica Mountains Habitat Linkage Planning Map (Version January 2017).

Legislative Authority: Public Resources Code Section 33211(c)

Background: The importance of the habitat linkage or wildlife corridor system that provides for animal movement between the 405 and 101 freeways leading to Griffith Park has long been recognized. The Conservancy and other agencies have acquired land and commented on development projects to protect distinct sections of the habitat linkage system for over 30 years. Tens of millions of public dollars have been invested in this effort. That effort to date has been successful enough to bring mountain lions into the area and to progressively increase the sightings of bobcats until the last few drought years. Many unprotected gaps remain. However, the bulk of the current protection effort is solely reactive to development threats because record high land values make it impossible to complete many fee simple acquisitions of parcels. Better planning tools are needed if the wildlife corridor system is to remain intact and be less subject to hit or miss protection objectives. Conservation easements, deed restrictions, and no fencing conditions are the only other means to permanently protect pieces of the habitat linkage system.

The City of Los Angeles Planning Department does not conduct independent research on habitat connectivity and relies on public agency and citizen comments for input on potential wildlife corridor impacts. The Department staff has long requested a comprehensive map of known and potential wildlife corridors in the eastern Santa Monica Mountains. The subject Eastern Santa Monica Mountains Habitat Linkage Planning Map proposed for adoption by the Conservancy provides that tool to the City Planning Department, developers, and homeowners.

The subject map covers the area between the 405 and 101 freeways comprehensively, with the exception of smaller peripheral habitat patches. Those patches can be mapped and integrated into the next adopted version of the Eastern Santa Monica Mountains Habitat Linkage Planning Map. The map delineations are not definitive in all areas. The mapping consists of



Agenda Item 13

January 23, 2017

Page 2

outlined habitat blocks and lines depicting both known, and potentially functional, wildlife corridors between them. Many habitat block boundaries and connections located on difficult to reach private lands were not ground-truthed. The map delineations are based on the best available Google Earth aerial and street view photography combined with accumulated staff knowledge. The map is meant to be instructive to clue all parties into potential constraints and opportunities both to protect habitat connections and land within all sized habitat blocks. On the ground conditions are fluid because fences can come and go and new construction occurs in almost every neighborhood. Available no-cost aerial photography is always a portion of a year behind conditions. However, most projects that potentially affect either habitat linkages or habitat blocks can now be well known to all concerned parties and most importantly the Planning Department staff. Each distinct habitat block polygon will be sequentially numbered to establish baseline nomenclature for easy reference to all parties. More precise resolution and mapped lines can be available if LARIAC aerial photography data is purchased by the City of Los Angeles.

The attached Resolution calls for the map to be updated and re-adopted no less than annually. It is impossible to provide a perfect map and hence this mapping effort is meant to be an iterative process that includes input from all available sources.

The PDF map file attached to this staff report item is based on and shown on Google Earth photography dated October 2016. The best available Google Earth street view data was October 2015. The line data will in many places be skewed when applied to earlier photography. To really use the line data for fine analysis, users will need to import a KMZ file to use within the Google Earth program and the most recent aerial photography. Large maps can also be plotted from the PDF. The line data is in a GIS shape file format used by all public agencies.

The key factor is that now there is a baseline map adopted by the most pertinent State planning agency available to guide impact analysis by the City and to give landowners (existing and prospective) a heads up about sensitive wildlife corridor areas and the location of habitat blocks and patches that are all integral to a functional habitat linkage system.

Staff intends for the next version of the map to include all private property between the 101 freeway and Griffith Park and between the 405 freeway and Topanga State Park. All of that area is still within the City of Los Angeles boundary.

January 23, 2017; Agenda Item No. 13

Resolution No. 17-01

RESOLUTION OF THE SANTA MONICA MOUNTAINS CONSERVANCY ADOPTING  
EASTERN SANTA MONICA MOUNTAINS HABITAT LINKAGE PLANNING MAP,  
CITY OF LOS ANGELES

WHEREAS, the eastern Santa Monica Mountains habitat linkage between the San Diego (405) freeway and Griffith Park is of regional scientific significance; and

WHEREAS, the subject habitat linkage system and the Mulholland Drive Scenic Corridor are a cultural treasure for the City of Los Angeles; and

WHEREAS, the efficacy of the subject habitat linkage system could be severed by new fencing on just one or two residential parcels; and

WHEREAS, the subject habitat linkage system has never been comprehensively mapped and such mapping is essential to adequately assess the impacts of proposed development projects; and

WHEREAS, a Habitat Linkage Planning Map for the Eastern Santa Monica Mountains adopted by the Santa Monica Mountains Conservancy as the principal State planning agency for the area is beneficial to the City of Los Angeles Department of Planning's efforts to maintain habitat connectivity; and

WHEREAS, the Los Angeles City Council (Koretz) adopted a motion to designate the subject area as a Regional Wildlife Habitat Linkage Zone in the Municipal Code and for the Planning Department to work in consultation with the Santa Monica Mountains Conservancy, the Mulholland Design Review Board, and Citizens for Los Angeles Wildlife (CLAW) to prepare an ordinance to create a Wildlife Corridor in the eastern area of the Santa Monica Mountains; and

WHEREAS, the proposed Eastern Santa Monica Mountains Habitat Linkage Planning Map represents an initial comprehensive step to delineate the majority of habitat blocks and connecting wildlife corridors between the 405 and 101 freeways for planning, conservation, and environmental impact analysis purposes; and

WHEREAS, the aerial photography and conditions that provide background for the habitat linkage mapping represent a slice in time and limited ground truthing, hence the subject map is an iterative work that is designed to be shaped, corrected, and modified at least annually to provide the most accurate and up to date information possible; and

Agenda Item 13  
January 23, 2017  
Page 2

WHEREAS, the staff report dated January 23, 2017 further describes the project; and

WHEREAS, The proposed action is exempt from the provisions of the California Environmental Quality Act (CEQA); Now

*Therefore Be It Resolved*, That the Santa Monica Mountains Conservancy hereby:

1. FINDS that the proposed action is categorically exempt from the provisions of the California Environmental Quality Act (CEQA).
2. ADOPTS the staff report and recommendation dated January 23, 2017.
3. FINDS that the proposed action is consistent with the *Santa Monica Mountains Comprehensive Plan*.
4. ADOPTS the proposed Eastern Santa Monica Mountains Habitat Linkage Planning Map (Version January 2017).
5. FURTHER AUTHORIZES the Executive Director, or his assignee, to perform any and all acts necessary to carry out this resolution.

*~ End of Resolution ~*

I HEREBY CERTIFY that the foregoing resolution was adopted at a meeting of the Santa Monica Mountains Conservancy, duly noticed and held according to law, on the 23<sup>rd</sup> day of January, 2017 at Los Angeles, California.

Dated: 1/23/17

---

Executive Director



140518

Agenda Item 13  
SMMC  
1/23/17

APR 23 2014

## PLANNING &amp; LAND USE MANAGEMENT

## MOTION

There are various communities throughout the city that are the location of natural lands and low density residential neighborhoods where wildlife exist— under the jurisdiction of the hillside ordinance. Unfortunately in these and other communities in the city, development activities often involve actions that detrimentally impact wildlife movements.

Without doubt private property interests and environmental considerations benefit by definite and consistent guidance on the environmental regulatory controls needed in any proposed land use development project.

The Santa Monica Mountains Conservancy have begun looking into wildlife corridors within its territories, which will prevent further injuries and deaths to wildlife, and protect the remaining open spaces and wildlife linkages that exist. Incursions into the habitat of wildlife in the city is counter to the intent and protections offered under the California Environmental Quality Act (CEQA).

The city needs to preserve the wildlife corridors in the eastern area of the Santa Monica Mountains(Hillside Ordinance zone), and to designate this area as a Regional Wildlife Habitat Linkage Zone, and to develop the necessary land use guidelines and measurable metrics to protect this region and dwindling habitat areas citywide.

I THEREFORE MOVE that the Council instruct the Planning Department, with the assistance of the City Attorney, and in consultation with the Santa Monica Mountains Conservancy, and citizen advocates such as, but not limited to Citizens for Los Angeles Wildlife (CLAW) and the Mulholland Design Review Board (MDRB), to prepare and present an ordinance to create a Wildlife Corridor in the eastern area of the Santa Monica Mountains(Hillside Ordinance zone) that requires the following:

1. Do not issue any building or grading permits until project applicants ensure that they will permanently accommodate wildlife habitat connectivity as part of their development projects.
2. Require easements and deed restrictions in perpetuity to protect wildlife habitat connectivity.
3. Formally designate the area as a Regional Wildlife Habitat Linkage Zone in the Municipal Code, in as much as just one single family residential project can cause adverse impacts to the existing and threatened wildlife populations.
4. Require a Biological Constraints Checklist as part of every new building project will undergo a 'habitat connectivity and wildlife permeability review' within areas of concern.

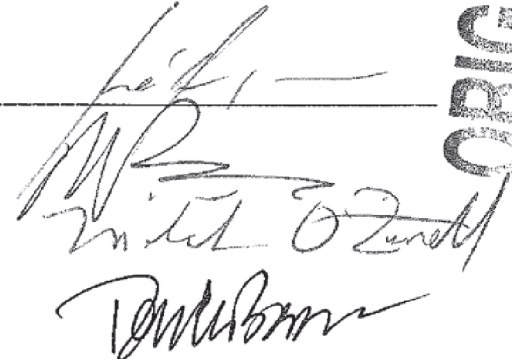
PRESENTED BY:



PAUL KORETZ

Councilmember, 5<sup>th</sup> District

SECOND BY:

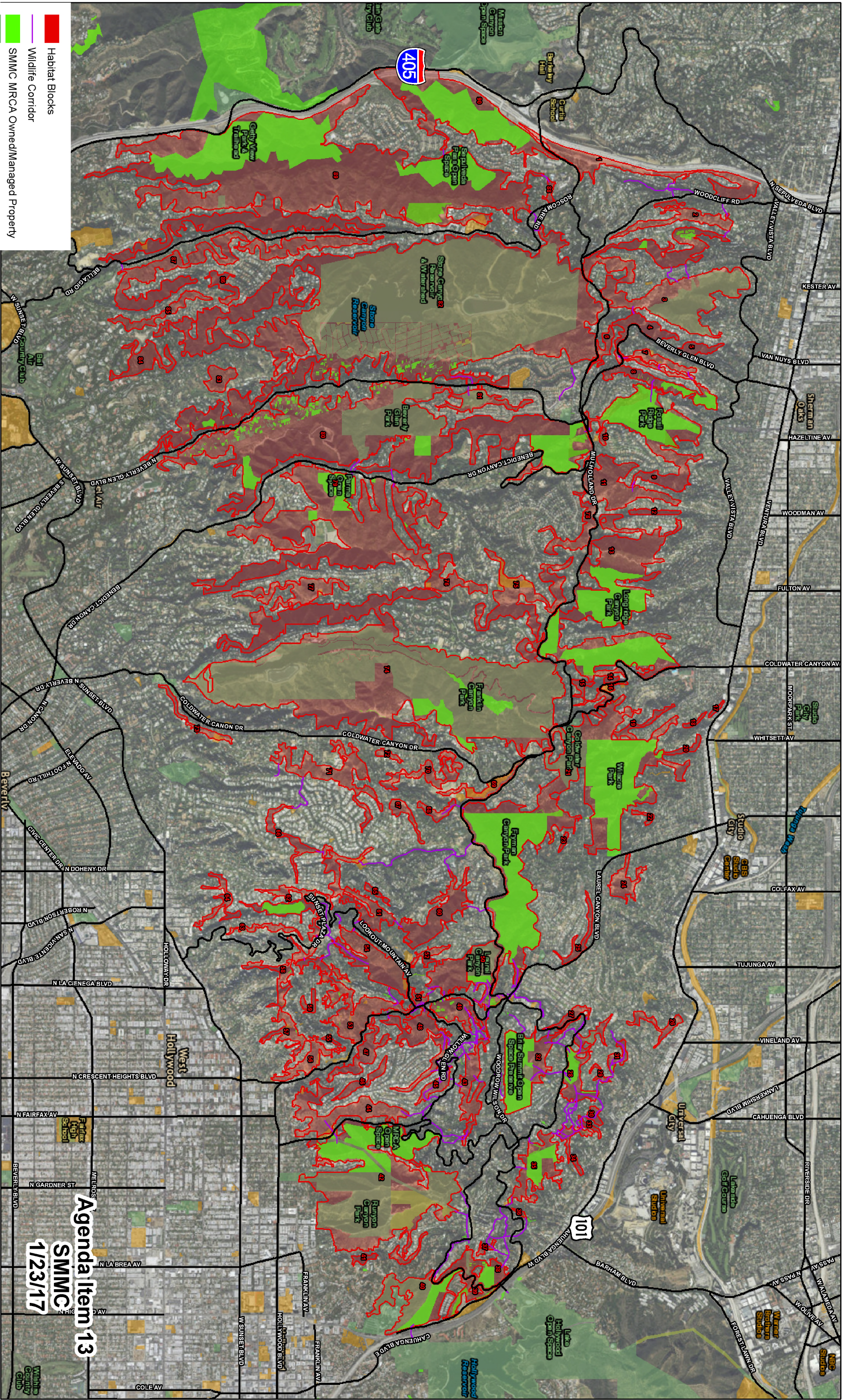



APR 23 2014

ORIGINAL

SMMCPRA\_009





# Eastern Santa Monica Mountains Habitat Linkage Planning Map

Agenda Item 13  
SMMC  
1/23/17

0 0.5 1 Miles





# **EXHIBIT D**

**From:** Spencer Eldred  
**To:** [Bonnie Thorne](#)  
**Cc:** [Andee Leisy](#)  
**Subject:** ESSM  
**Date:** Thursday, May 24, 2018 11:05:55 AM  
**Attachments:** [ESSM Habitat Blocks.zip](#)  
[ESSM wildlife corridors.zip](#)

---

Good morning,

Attached is the spatial data in shapefile format that was used for our adopted January 2017 ESSM map. Our staff believe you will likely need ESRI software to use.

Warm regards,  
Spencer Eldred

*Spencer Eldred, Staff Counsel  
Mountains Recreation and Conservation Authority  
570 West Avenue 26, Suite 100  
Los Angeles, CA 90065  
[\(323\) 221-9944, ext. 181](#)*

# **EXHIBIT E**



**From:** Spencer Eldred  
**To:** [Andee Leisy](#)  
**Cc:** [Kathryn A. Ramirez](#); [Nathan George](#); [Bonnie Thorne](#); [Michele L. Nickell](#); [robert.mahlowitz@lacity.org](mailto:robert.mahlowitz@lacity.org)  
**Subject:** Public Records Request Response  
**Date:** Wednesday, May 30, 2018 12:25:59 PM  
**Attachments:** [PRA Response Eastern Santa Monica Mountains Habitat Linkage Planning Map.pdf](#)

---

Dear Mr. Leisy:

The Mountains Recreation and Conservation Authority (MRCA) and the Santa Monica Mountains Conservancy (SMMC) are in receipt of your request for public records, dated May 18, 2018 and received May 21, 2018. Please see the attached response. Thank you.

Sincerely,

Spencer Eldred

*Spencer Eldred, Staff Counsel  
Mountains Recreation and Conservation Authority  
570 West Avenue 26, Suite 100  
Los Angeles, CA 90065  
 [\(323\) 221-9944, ext. 181](tel:(323)221-9944)*



**MOUNTAINS RECREATION & CONSERVATION AUTHORITY**  
Los Angeles River Center and Gardens  
570 West Avenue Twenty-six, Suite 100  
Los Angeles, California 90065  
Phone (323) 221-9944 Fax (323) 221-9934

May 30, 2018

To: Andee Leisy

CC: Kathryn A. Ramirez, Nathan George, Bonnie Thorne, Michele Nickell, and Robert Mahlowitz

*Via electronic mail*

### **Public Records Request**

Dear Mr. Leisy:

The Mountains Recreation and Conservation Authority (MRCA) and the Santa Monica Mountains Conservancy (SMMC) are in receipt of your request for public records, dated May 18, 2018 and received May 21, 2018.

MRCA and SMMC have provided to you all our responsive records in my earlier email from May 24, 2018. As we discussed earlier, if you need technical assistance to help view the files, please let me know. This is a follow-up letter to confirm my belief that we have fulfilled your request. If you need additional information or records, feel free to reach out to me again.

If you would like physical copies of documents, please note that there is a \$0.25 per page reproduction fee for all printed records. Each side of a card or paper is considered a separate sheet for the cost and fee computation purposes. The fee for certification of each copy is one dollar. Postage must also be paid if you would like the records mailed to you. The fee for duplication of an electronic file on a compact disc is one dollar per disc. All payment must be received in advance of any reproduction or mailing.

If you have any questions, please feel free to contact me at 323-221-9944, ext. 181 or via email at [spencer.eldred@mrca.ca.gov](mailto:spencer.eldred@mrca.ca.gov).

Sincerely,

Spencer Eldred,  
Staff Counsel

# **EXHIBIT F**

**From:** Spencer Eldred  
**To:** [Andee Leisy](#)  
**Cc:** [Kathryn A. Ramirez](#); [Nathan George](#); [Bonnie Thorne](#); [Michele L. Nickell](#); [robert.mahlowitz@lacity.org](mailto:robert.mahlowitz@lacity.org)  
**Subject:** RE: Public Records Request Response  
**Date:** Monday, June 04, 2018 1:43:30 PM

---

Dear Mr. Leisy:

The Mountains Recreation and Conservation Authority (MRCA) and the Santa Monica Mountains Conservancy (SMMC) have found additional records and would like to supplement our earlier response. Due to the size of attachments, I will only be forwarding them to you instead of copying the whole group. If you additionally prefer another method of delivery, please let me know. Charges described in my earlier response will apply for physical copies and postage. If anyone at your office would also like to be sent copies directly, please let me know. Thank you.

Sincerely,

Spencer Eldred

*Spencer Eldred, Staff Counsel  
Mountains Recreation and Conservation Authority  
570 West Avenue 26, Suite 100  
Los Angeles, CA 90065  
 [\(323\) 221-9944, ext. 181](tel:(323)221-9944)*

---

**From:** Spencer Eldred  
**Sent:** Wednesday, May 30, 2018 12:26 PM  
**To:** Andee Leisy  
**Cc:** [KRamirez@rmmenvirolaw.com](mailto:KRamirez@rmmenvirolaw.com); [NGeorge@rmmenvirolaw.com](mailto:NGeorge@rmmenvirolaw.com); [BThorne@rmmenvirolaw.com](mailto:BThorne@rmmenvirolaw.com); [MNickell@rmmenvirolaw.com](mailto:MNickell@rmmenvirolaw.com); [robert.mahlowitz@lacity.org](mailto:robert.mahlowitz@lacity.org)  
**Subject:** Public Records Request Response

Dear Mr. Leisy:

The Mountains Recreation and Conservation Authority (MRCA) and the Santa Monica Mountains Conservancy (SMMC) are in receipt of your request for public records, dated May 18, 2018 and received May 21, 2018. Please see the attached response. Thank you.

Sincerely,

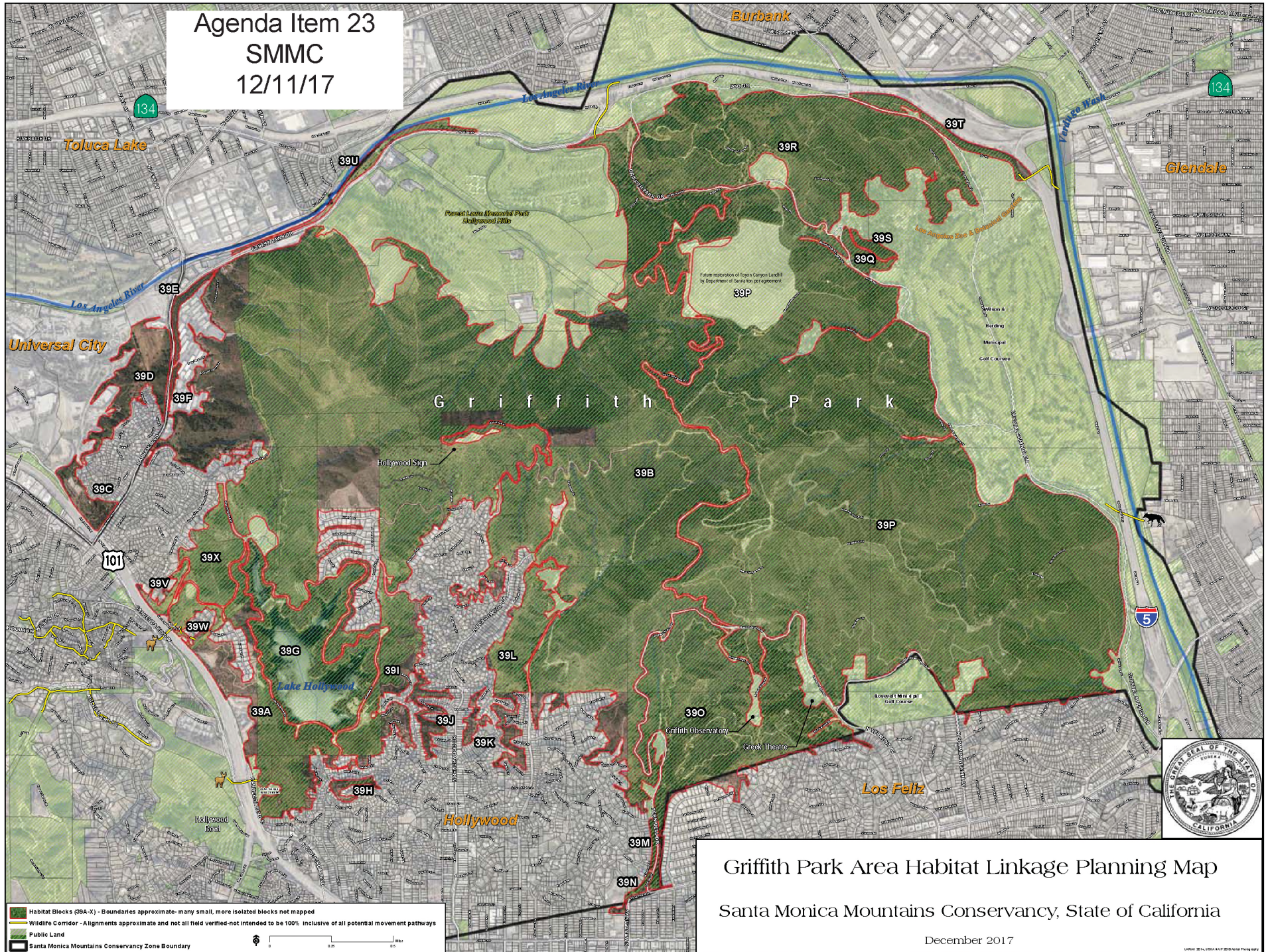
Spencer Eldred

*Spencer Eldred, Staff Counsel  
Mountains Recreation and Conservation Authority  
570 West Avenue 26, Suite 100  
Los Angeles, CA 90065*

# **EXHIBIT G**



Agenda Item 23  
SMMC  
12/11/17





December 11, 2017; Agenda Item No. 23

Resolution No. 17-79

RESOLUTION OF THE SANTA MONICA MOUNTAINS CONSERVANCY ADOPTING  
GRIFFITH PARK AREA HABITAT LINKAGE PLANNING MAP,  
CITY OF LOS ANGELES

WHEREAS, the eastern Santa Monica Mountains habitat linkage between the San Diego (405) freeway and Griffith Park is of regional scientific and cultural significance; and

WHEREAS, the habitat linkage systems that connects Griffith Park to natural lands west of the 101 freeway and surrounding the park are of regional significance; and

WHEREAS, the efficacy of the subject habitat linkage system could be severed by new fencing on just one or two residential parcels; and

WHEREAS, the subject Griffith Park area habitat linkage system has never been comprehensively mapped and such mapping is essential to adequately assess the impacts of proposed development projects of all scales; and

WHEREAS, a Griffith Park Area Habitat Linkage Planning Map adopted by the Santa Monica Mountains Conservancy as the principal State planning agency for the area is beneficial to the City of Los Angeles Department of Planning's efforts to maintain habitat connectivity and core habitat resources; and

WHEREAS, the staff report dated December 11, 2017 further describes the project; and

WHEREAS, The proposed action is exempt from the provisions of the California Environmental Quality Act (CEQA); Now

*Therefore Be It Resolved*, That the Santa Monica Mountains Conservancy hereby:

1. FINDS that the proposed action is categorically exempt from the provisions of the California Environmental Quality Act (CEQA).
2. ADOPTS the staff report and recommendation dated December 11, 2017.
3. FINDS that the proposed action is consistent with the *Santa Monica Mountains Comprehensive Plan*.
4. ADOPTS the proposed Griffith Park Area Habitat Linkage Planning Map.

Agenda Item 23  
December 11, 2017  
Page 2

5. FURTHER AUTHORIZES the Executive Director, or his assignee, to perform any and all acts necessary to carry out this resolution.

*~ End of Resolution ~*

I HEREBY CERTIFY that the foregoing resolution was adopted at a meeting of the Santa Monica Mountains Conservancy, duly noticed and held according to law, on the 11th day of December, 2017 at Beverly Hills, California.

Dated: 12/11/17



Executive Director



# Memorandum

To : The Conservancy  
The Advisory Committee

Date: December 11, 2017

From :  Joseph T. Edmiston, FAICP, Hon. ASLA, Executive Director

Subject: **Agenda Item 23: Consideration of resolution adopting Griffith Park Area Habitat Linkage Planning Map, City of Los Angeles.**

Staff Recommendation: That the Conservancy adopt the attached resolution adopting a Griffith Park Area Habitat Linkage Planning Map, City of Los Angeles.

Legislative Authority: Public Resources Code Section 33211(c)

Background: At its January 2017 meeting the Conservancy adopted an Eastern Santa Monica Mountains Habitat Linkage Planning Map for the area just west of the 405 freeway in the Sepulveda Pass to just east of 101 freeway in the Cahuenga Pass. That map shows sequentially numbered habitat blocks and identified habitat linkages. The proposed Griffith Park Area Habitat Linkage Planning Map extends this habitat block and linkage mapping resource to 15 at the eastern edge of Griffith Park and into the Los Angeles River. The City of Los Angeles Planning Department requested this expansion of the mapping.

The City of Los Angeles Planning Department does not conduct independent research for any proposed development projects on habitat connectivity, and it relies on public agency and citizen comments for input on potential wildlife corridor impacts from development. The Department staff has long requested comprehensive maps of known and potential wildlife corridors in the eastern Santa Monica Mountains and other parts of the City. The adopted Eastern Santa Monica Mountains Habitat Linkage Planning Map and proposed Griffith Park Area Habitat Linkage Planning Map do, and will, provide that tool to the City Planning Department, other public agencies, developers, and homeowners.

The mapping model includes outlined habitat blocks and lines depicting both known, and potentially functional, wildlife corridors between them. Many habitat block boundaries and connections located on difficult to reach private lands were not ground-truthed. The map delineations are based on the best available Google Earth aerial and street view photography combined with accumulated staff knowledge. The map is meant to be instructive to clue all parties into potential constraints and opportunities both to protect habitat connections and land within all sized habitat blocks. On the ground conditions are fluid because fences can come and go and new construction occurs in almost every neighborhood. Each distinct habitat

Agenda Item 23  
December 11, 2017  
Page 2

block polygon is sequentially numbered to establish baseline nomenclature for easy reference to all parties.

It is impossible to provide a perfect map in time and hence this mapping effort is meant to be an iterative process that includes input from all available sources. The attached Resolution calls for the map to be updated no less than annually.

The key factor is to provide a timely baseline habitat linkage map adopted for the Griffith Park Area by the most pertinent State planning agency available to guide environmental impact analysis by the City and to give landowners (existing and prospective) a heads up about sensitive wildlife corridor areas and the location of habitat blocks and patches that are all integral to a functional habitat linkage system.



PO Box 50003 Studio City, CA 91614  
805-225-5766 info@clawonline.org www.clawonline.org

January 20, 2017

Santa Monica Mountains Conservancy  
5750 Ramirez Canyon Road  
Malibu, CA 90265

RE: Eastern Santa Monica Mountains Habitat Linkage Planning Maps (Agenda Item 13, January 23<sup>rd</sup>, 2017)

Dear Conservancy and Advisory Committee Members,

Citizens for Los Angeles Wildlife (CLAW) is a non-profit advocacy environmental organization concerned with the well being of wildlife and wildlife open space habitat for the City of Los Angeles and beyond. A citizenry of more 3000 individuals now supports our organization's multiple calls for biodiverse practices and policy to benefit LA City, County, California and beyond.

In 2016, CLAW was delighted to become part of a working group with Santa Monica Mountains Conservancy and the Los Angeles Department of City Planning to establish and implement a wildlife habitat linkage zone to ensure the ongoing wildlife connectivity in Los Angeles hillsides, beginning with the eastern Santa Monica Mountains (I-405 to Griffith Park.) We are thrilled to witness the creation and anticipated adoption of the Eastern Santa Monica Mountains Habitat Linkage Planning Map as it is a phenomenally vital document to move forward -- a scientific reference document to mark the current and future connectivity of open space. This comprehensive map will certainly be an iterative document for the conservancy to use and reflect changes over time.

We implore you to adopt this baseline mapping as soon as possible. The timing of this adoption couldn't be more important as Los Angeles open space and wildlife connectivity are facing very dangerous bottlenecks and blockages all along the wildlife corridor and every day new construction is a potential death knell for the well-being of Los Angeles ecosystems. Without this document one single family house can completely and permanently block the wildlife corridor between the 405 and Griffith Park creating corrals that would create ecosystem islands and ultimate microclimate destruction. This map displays a holistic view of connectivity and provides a most critical conservation tool (that has been missing from LA City planning) bringing together an important visual relationship between our open space, our wildlife, our human activity, and our overall environmental well-being.

Sincerely,

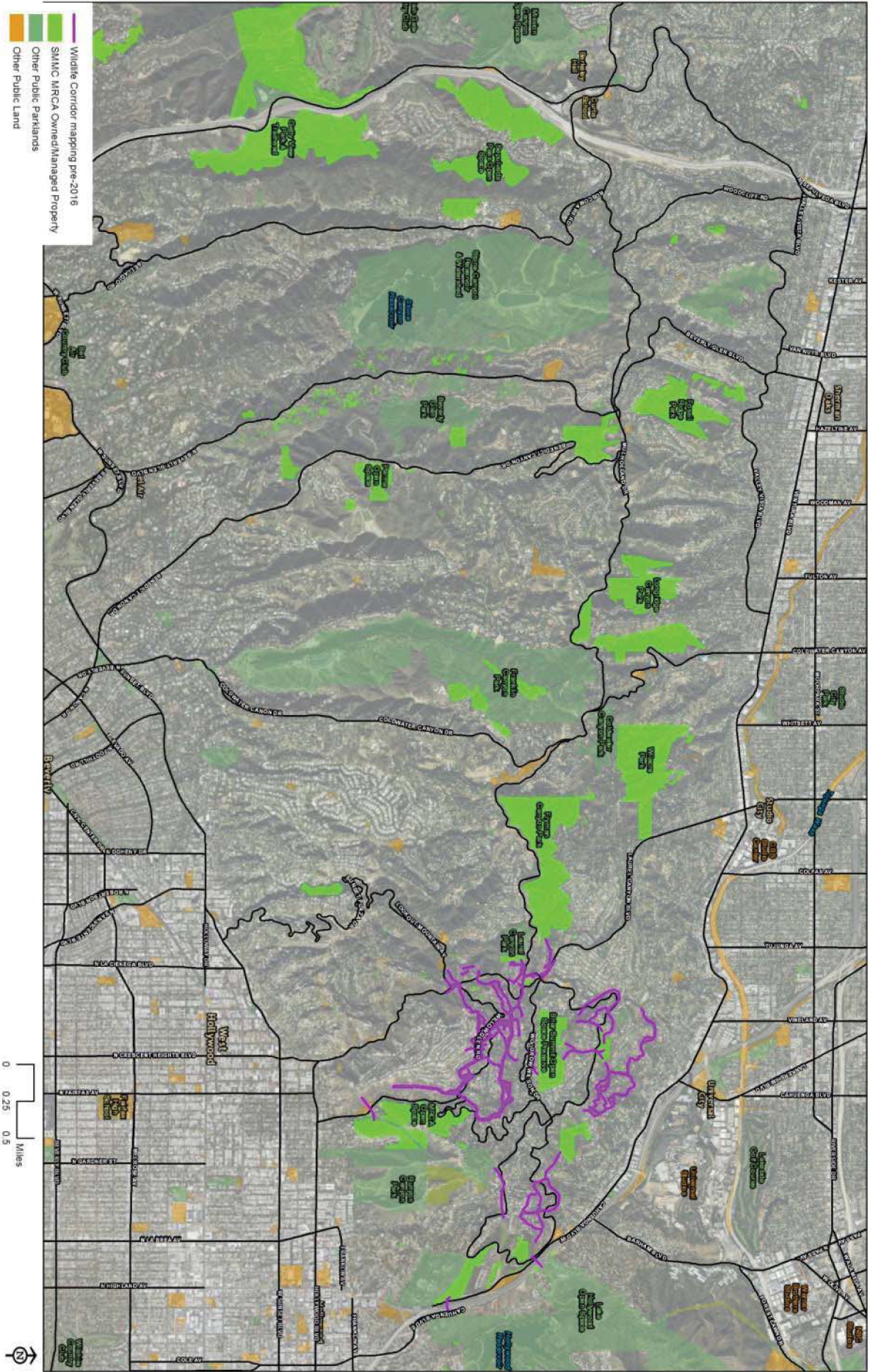
Alison Simard  
Chairperson

*CLAW is a public benefit non-profit 501(c)(3) environmental organization that works to protect and restore the environments of wildlife of Los Angeles and California from dwindling open spaces. Our mission is to promote, educate and protect the fundamental importance of wildlife, wildlife habitats and wildlife corridors everywhere.*











14-0518

Agenda Item 13  
SMMC  
1/23/17

APR 23 2014

PLANNING &amp; LAND USE MANAGEMENT

## MOTION

There are various communities throughout the city that are the location of natural lands and low density residential neighborhoods where wildlife exist- under the jurisdiction of the hillside ordinance. Unfortunately in these and other communities in the city, development activities often involve actions that detrimentally impact wildlife movements.

Without doubt private property interests and environmental considerations benefit by definite and consistent guidance on the environmental regulatory controls needed in any proposed land use development project.

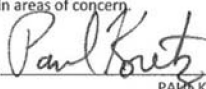
The Santa Monica Mountains Conservancy have begun looking into wildlife corridors within its territories, which will prevent further injuries and deaths to wildlife, and protect the remaining open spaces and wildlife linkages that exist. Incursions into the habitat of wildlife in the city is counter to the intent and protections offered under the California Environmental Quality Act (CEQA).

The city needs to preserve the wildlife corridors in the eastern area of the Santa Monica Mountains(Hillside Ordinance zone), and to designate this area as a Regional Wildlife Habitat Linkage Zone, and to develop the necessary land use guidelines and measurable metrics to protect this region and dwindling habitat areas citywide.

I THEREFORE MOVE that the Council instruct the Planning Department, with the assistance of the City Attorney, and in consultation with the Santa Monica Mountains Conservancy, and citizen advocates such as, but not limited to Citizens for Los Angeles Wildlife (CLAW) and the Mulholland Design Review Board (MDRB), to prepare and present an ordinance to create a Wildlife Corridor in the eastern area of the Santa Monica Mountains(Hillside Ordinance zone) that requires the following:

1. Do not issue any building or grading permits until project applicants ensure that they will permanently accommodate wildlife habitat connectivity as part of their development projects.
2. Require easements and deed restrictions in perpetuity to protect wildlife habitat connectivity.
3. Formally designate the area as a Regional Wildlife Habitat Linkage Zone in the Municipal Code, in as much as just one single family residential project can cause adverse impacts to the existing and threatened wildlife populations.
4. Require a Biological Constraints Checklist as part of every new building project will undergo a 'habitat connectivity and wildlife permeability review' within areas of concern.

PRESENTED BY:



PAUL KORETZ  
Councilmember, 5<sup>th</sup> District

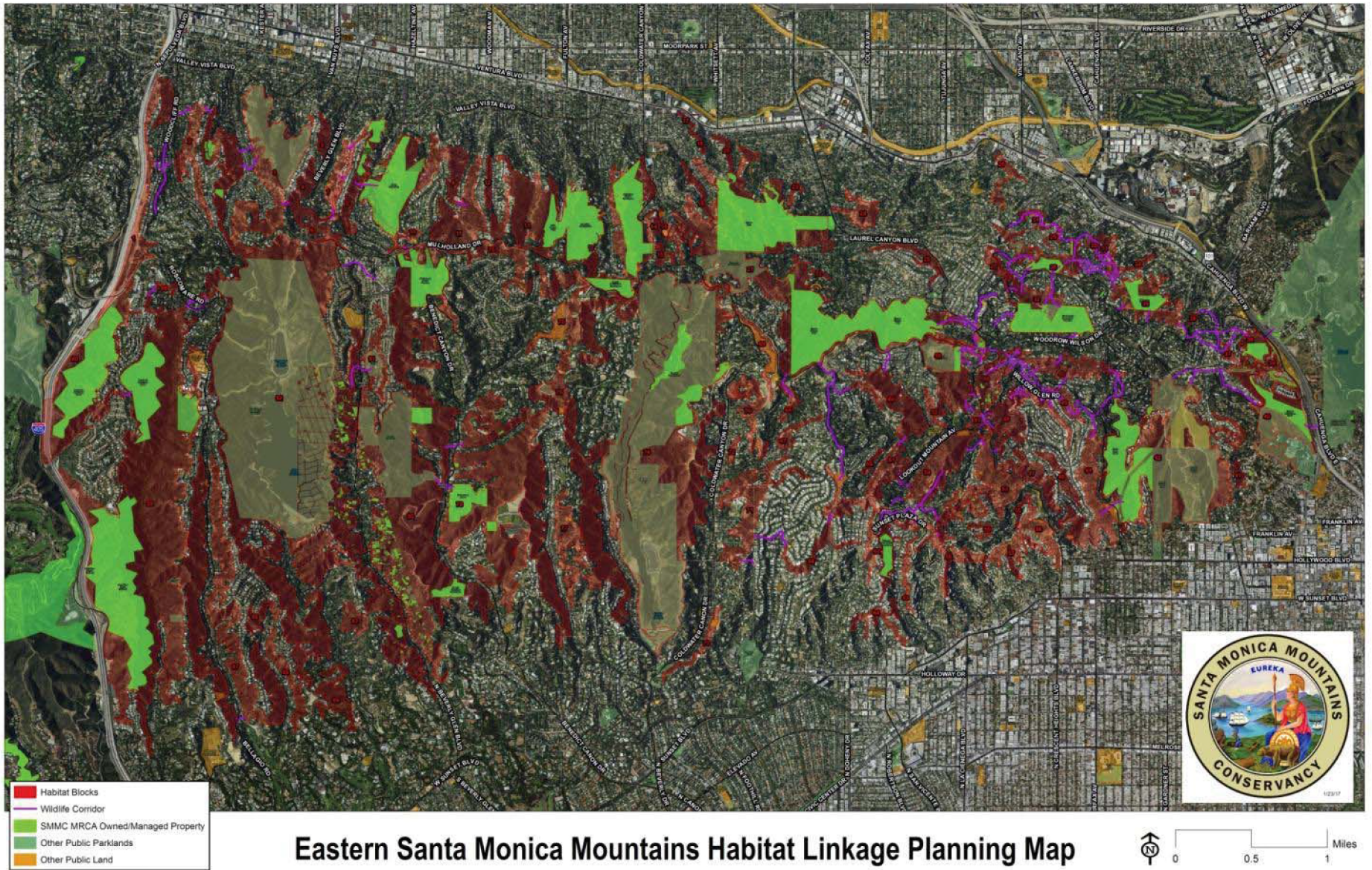
SECONDED BY:




APR 23 2014

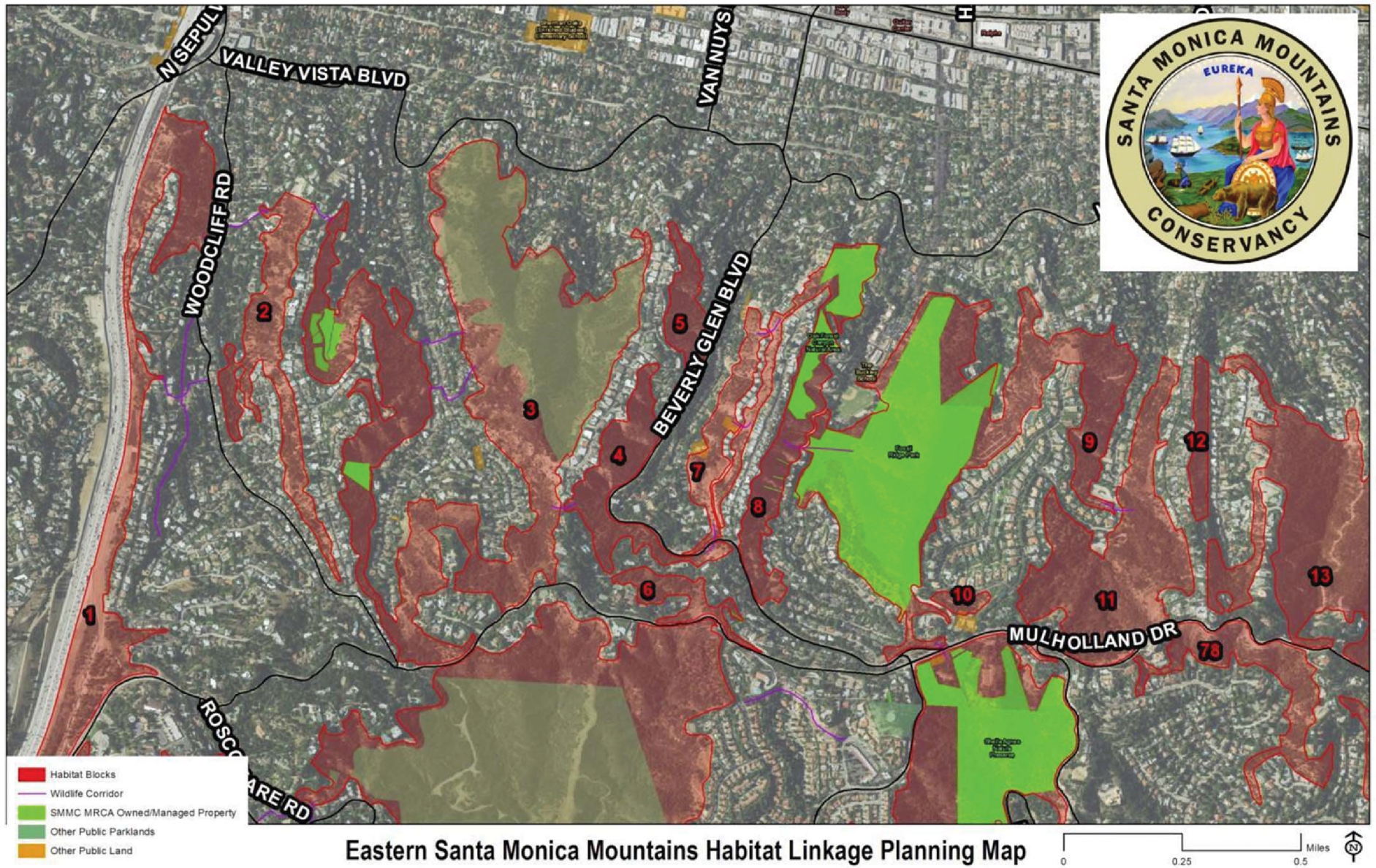
ORIGINAL



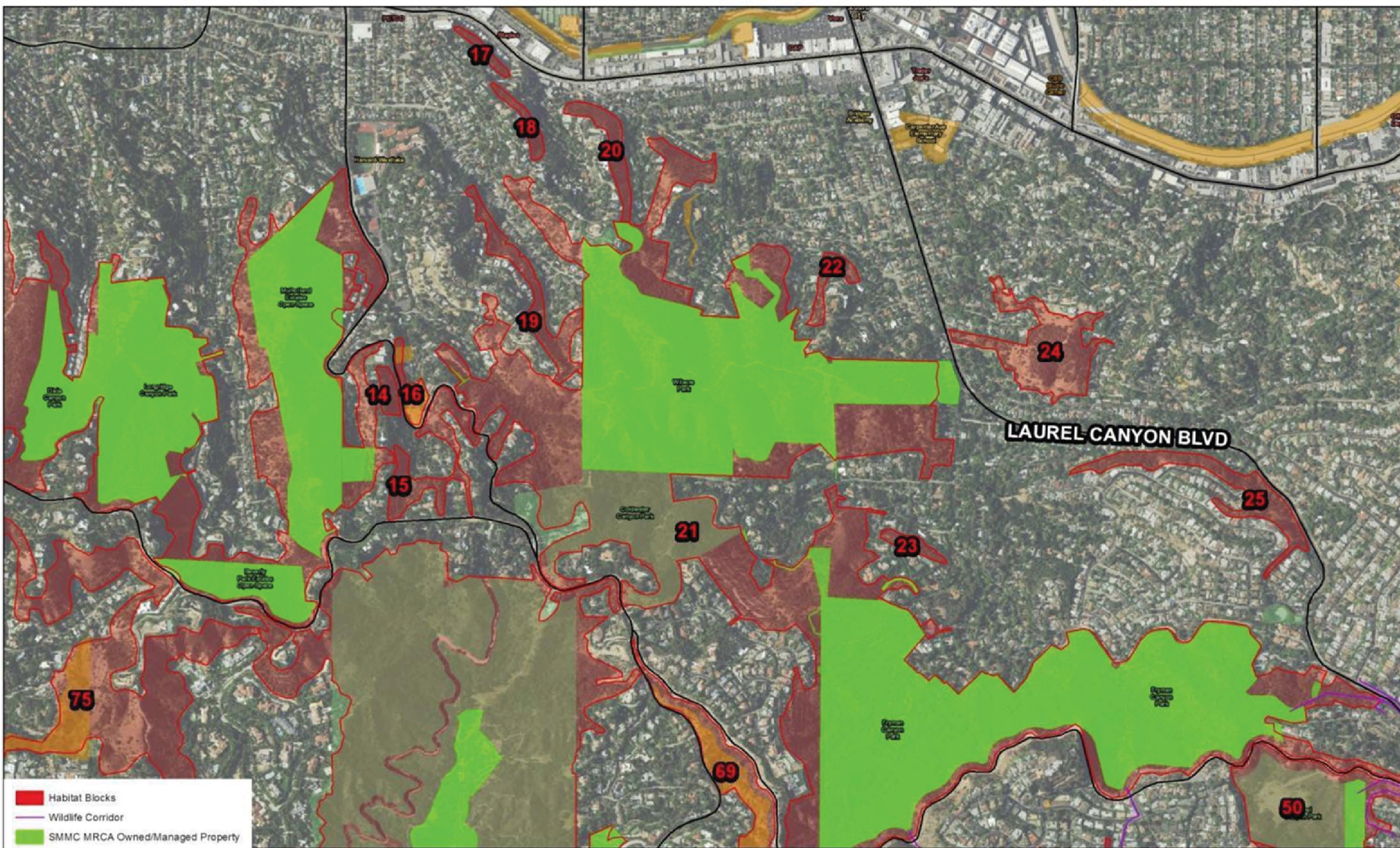


Eastern Santa Monica Mountains Habitat Linkage Planning Map





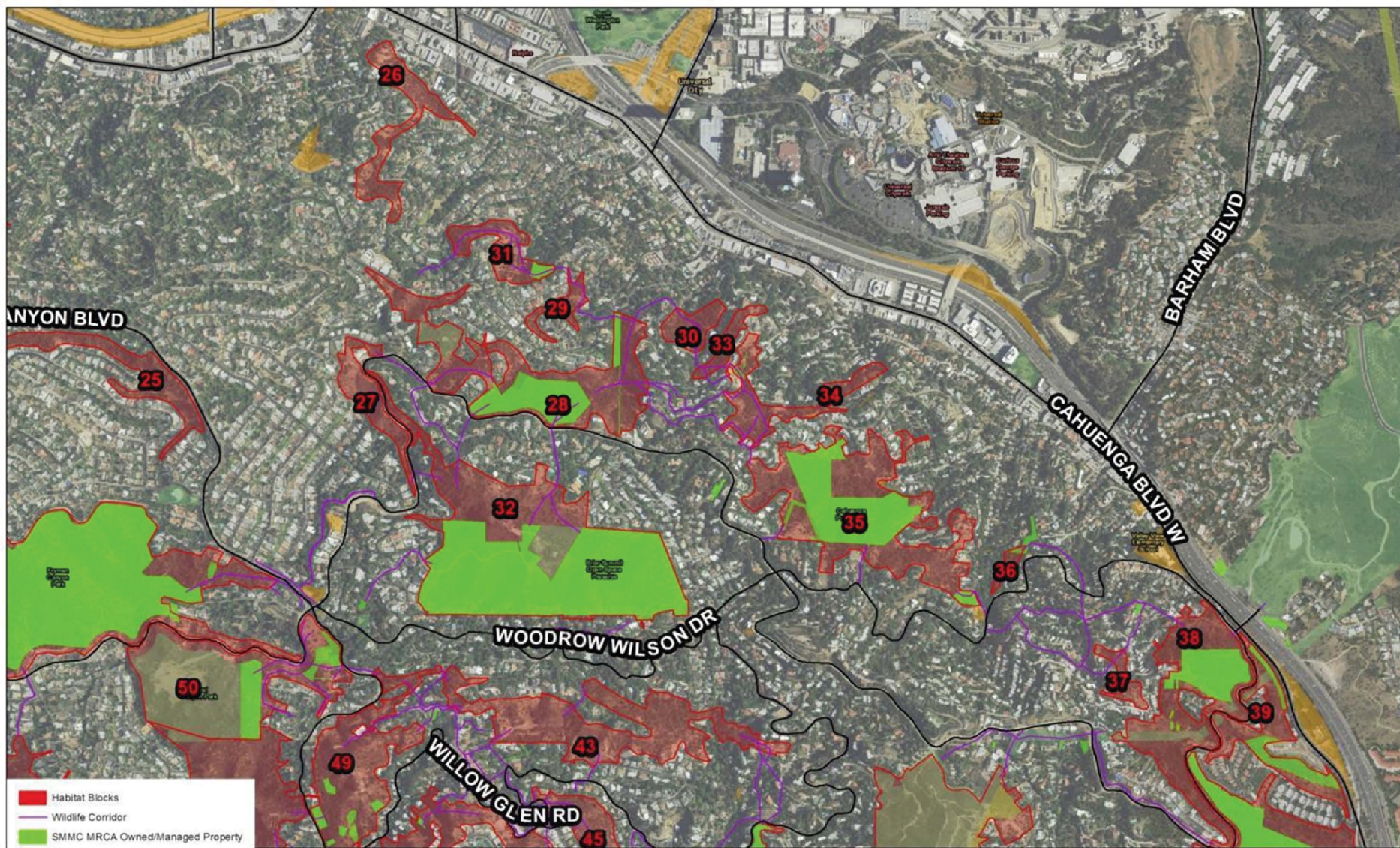




Eastern Santa Monica Mountains Habitat Linkage Planning Map

0 0.25 0.5 Miles

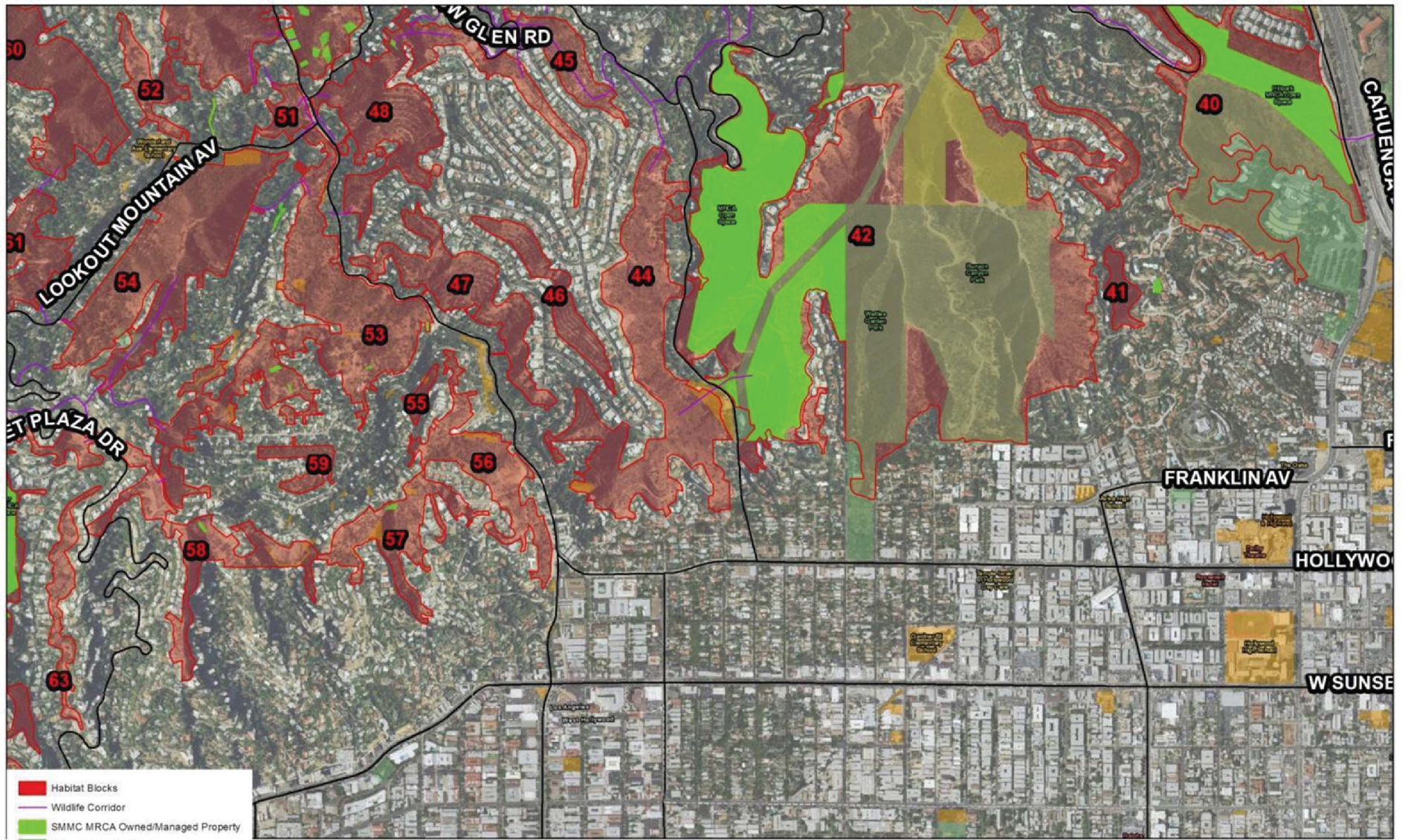




Eastern Santa Monica Mountains Habitat Linkage Planning Map

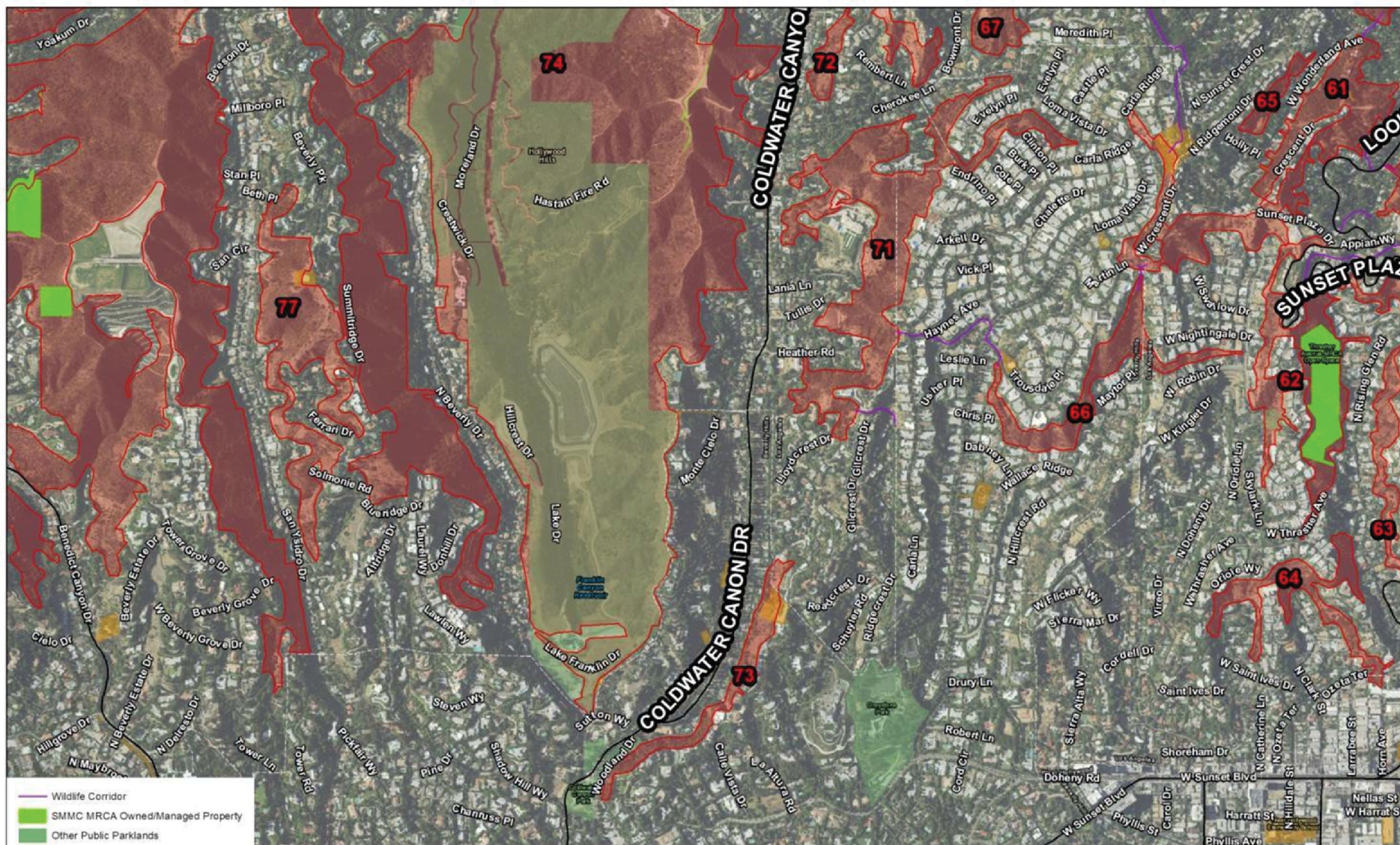






Eastern Santa Monica Mountains Habitat Linkage Planning Map





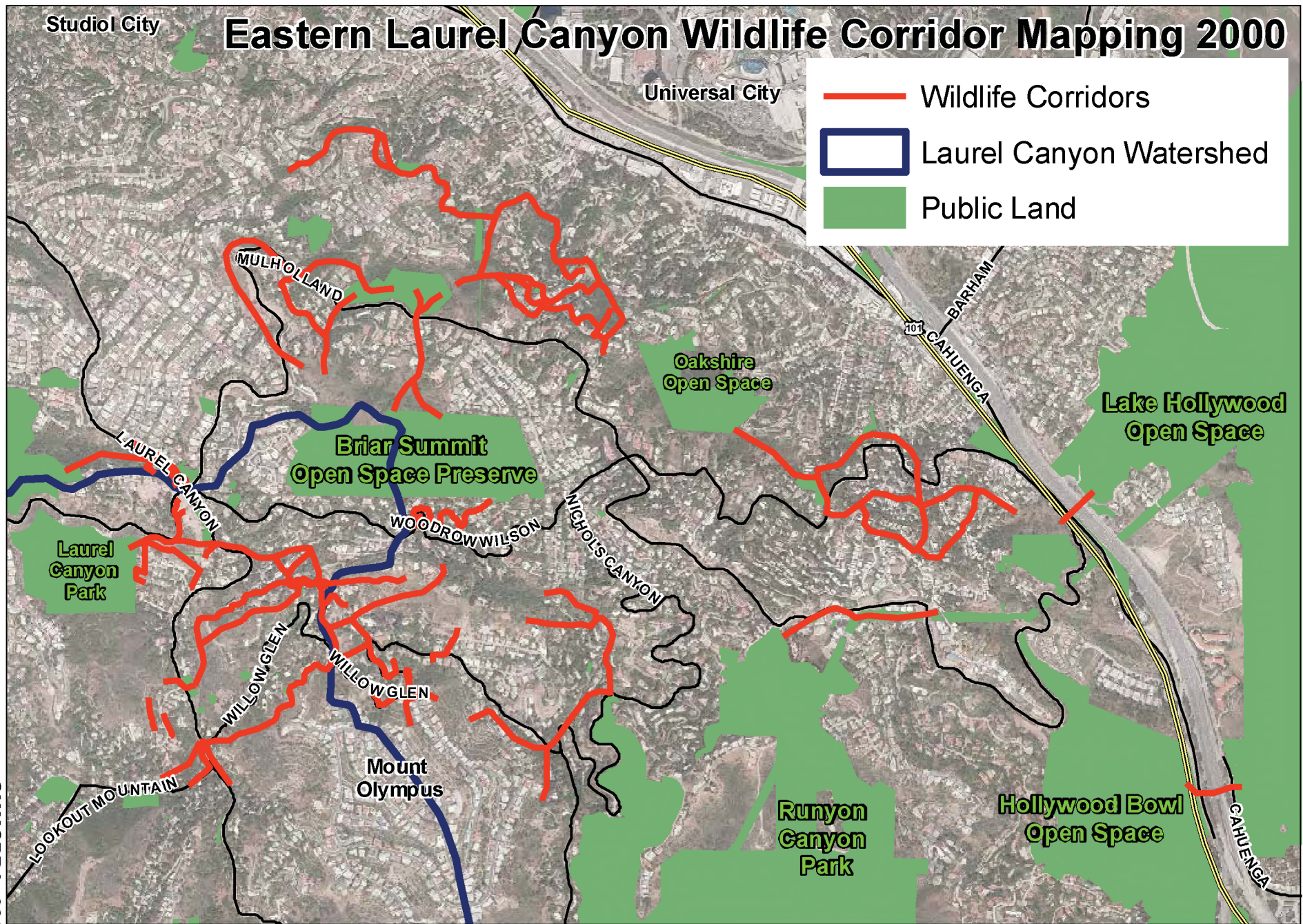
Eastern Santa Monica Mountains Habitat Linkage Planning Map



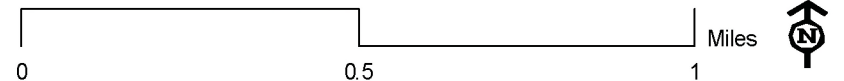








SMCPR\_031





**From:** Marc Shores  
**To:** [Paul Edelman](#)  
**Subject:** RE: Are you still making the Nichols ESMM 2251 two versions map from earlier email today?  
**Date:** Thursday, April 19, 2018 8:01:20 AM  
**Attachments:** [2251 nichols wlc.pdf](#)

---

---

**From:** Paul Edelman [mailto:[edelman@smmc.ca.gov](mailto:edelman@smmc.ca.gov)]  
**Sent:** Wednesday, April 18, 2018 10:12 PM  
**To:** Marc Shores  
**Subject:** RE: Are you still making the Nichols ESMM 2251 two versions map from earlier email today?

If you have time in AM please more or less make one even more zoomed out with the ESMM WLC habitat blocks and linkages adopted. I can print it at 10:10

---

**From:** Marc Shores [mailto:[marc.shores@mrca.ca.gov](mailto:marc.shores@mrca.ca.gov)]  
**Sent:** Wednesday, April 18, 2018 5:20 PM  
**To:** Paul Edelman <[edelman@smmc.ca.gov](mailto:edelman@smmc.ca.gov)>  
**Subject:** RE: Are you still making the Nichols ESMM 2251 two versions map from earlier email today?

Or not... sorry.

---

**From:** Marc Shores  
**Sent:** Wednesday, April 18, 2018 5:17 PM  
**To:** Paul Edelman  
**Subject:** Re: Are you still making the Nichols ESMM 2251 two versions map from earlier email today?

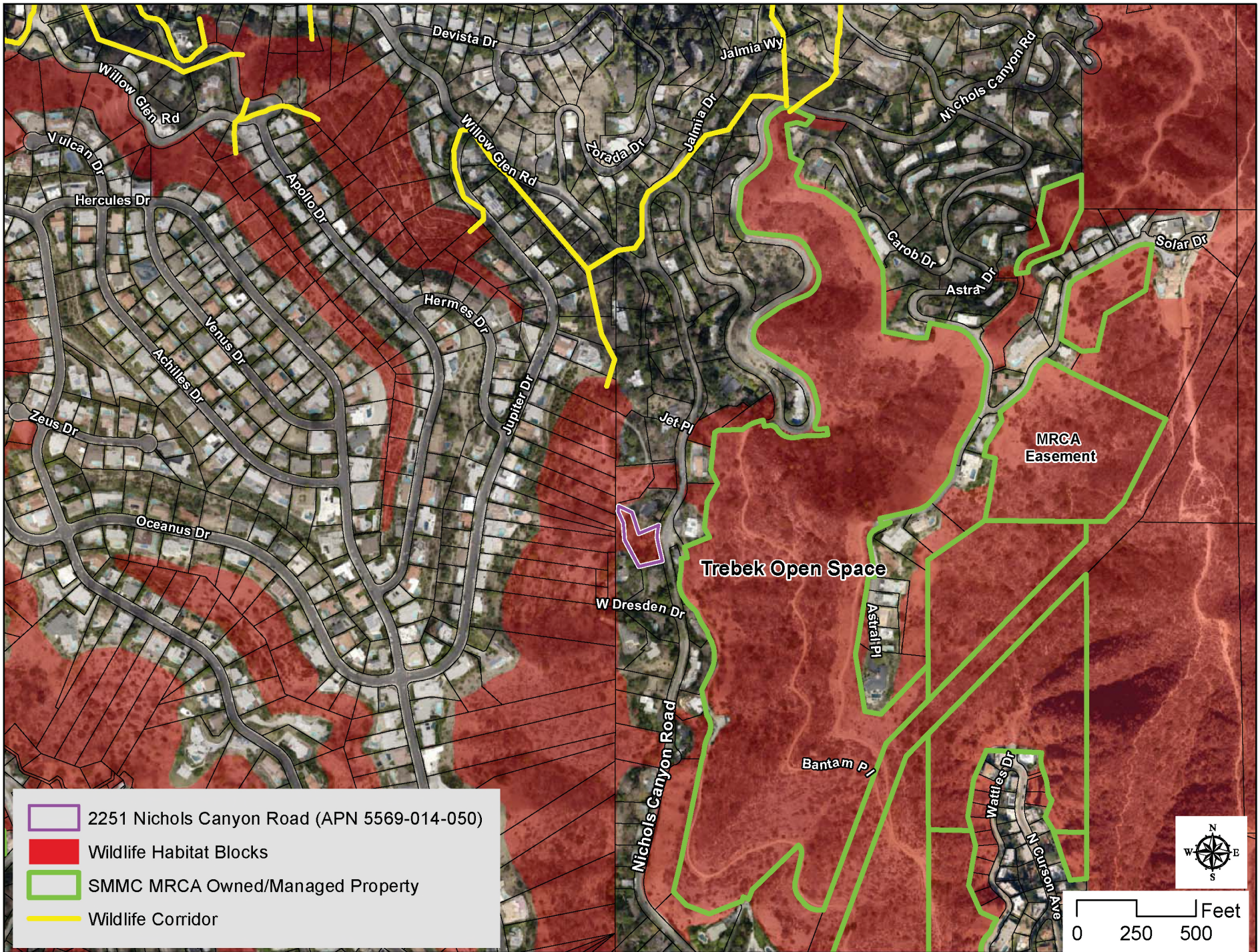
No, you should have both.

Sent from my Verizon, Samsung Galaxy smartphone

----- Original message -----

From: Paul Edelman <[edelman@smmc.ca.gov](mailto:edelman@smmc.ca.gov)>  
Date: 4/18/18 4:48 PM (GMT-08:00)  
To: Marc Shores <[marc.shores@mrca.ca.gov](mailto:marc.shores@mrca.ca.gov)>  
Subject: Are you still making the Nichols ESMM 2251 two versions map from earlier email today?







**From:** Marc Shores  
**To:** [Paul Edelman](#)  
**Subject:** RE: Maps  
**Date:** Thursday, July 27, 2017 6:26:42 PM

---

We created wildlife habitat polygons using Google Earth (GE) standalone software. The software allows for multi-year interpretation of aerial imagery displaying different times/seasons of the year. The purpose of using one or more years of aerial photography was to utilize the highest resolution imagery to determine urban/wildland interface, and locate/avoid obstacles to wildlife movement (fencelines, impervious surface, etc). We also tried to use aerial years in the winter/early spring so as to avoid deciduous tree canopy for better understory analysis. Wildlife corridor lines were created in similar fashion, utilizing the GE "street view" tool and physical ground truthing. Much of the mapping was performed at a relatively large scale, trying to keep under a GE "eye altitude" of 700' or less. All polygons were then assigned a number.

---

**From:** Paul Edelman [<mailto:edelman@smmc.ca.gov>]  
**Sent:** Thursday, July 27, 2017 4:38 PM  
**To:** Marc Shores  
**Subject:** FW: Maps

Marc please write a paragraph of how the ESMM WLC map was prepared

---

**From:** Diana Kitching [<mailto:diana.kitching@lacity.org>]  
**Sent:** Thursday, July 27, 2017 3:02 PM  
**To:** Paul Edelman  
**Subject:** Maps

Hi Paul,

Just to follow up on a previous e-mail, we have some projects that appear to be in areas on the map. I'd like to provide the potential applicants with some guidance, and also let them know how these maps were determined and what the basis was for determining if their property was in this area. Any information you or your staff have to back up the lines would be much appreciated.

Also, do you have data showing easements and ownership beyond this initial maps in the Santa Monica Mountains?

I'm out tomorrow but would love to chat next week.

Kind regards,

Diana



---

**Diana Kitching**, City Planner  
**Department of City Planning**

Citywide Policy Planning

(213) 978-1308

200 N. Spring St., Room 278

Los Angeles, CA. 90012

[Los Angeles Department of City Planning](#)

Please note I am out of the office every other Friday

**SANTA MONICA MOUNTAINS CONSERVANCY**

RAMIREZ CANYON PARK  
5750 RAMIREZ CANYON ROAD  
MALIBU, CALIFORNIA 90265  
PHONE (310) 589-3200  
FAX (310) 589-3207  
WWW.SMMC.CA.GOV



May 8, 2017

Vince Bertoni  
Director of Planning  
City Planning Department  
200 North Spring Street, 5th Floor  
Los Angeles, California 90012-2601

**Conservancy Adoption and Distribution of  
Eastern Santa Monica Mountains Habitat Linkage Planning Map**

Dear Mr. Bertoni:

At its January 23, 2017 meeting the Santa Monica Mountains Conservancy adopted the attached Eastern Santa Monica Mountains Habitat Linkage Planning Map. This map defines known habitat blocks and habitat linkages in this highly fragmented area of the Santa Monica Mountains Zone. These identified landscape features are critical to maintain habitat connectivity in the natural lands between the 405 and 101 freeways and into Griffith Park. This planning map is an official resource tool for both government and public use to understand, assess, and protect habitat and wildlife corridors. The Conservancy is the principal State planning agency in the Santa Monica Mountains Zone. The information was compiled using all publically available digital aerial photography and ground truthing where public access was permissible.

The map is intended to be updated as often as time and resources permit. We welcome input from the City to refine the map as time goes on. This first May 2017 version uses two aerial photography bases. The outlined habitat blocks reveal USDA NAIP 2012 aerial photography for clarity. All of the area outside of the habitat blocks is LARIAC 2014 aerial photography chosen to maximize development detail both adjacent to and between habitat blocks. If updated versions (with superior resolution) of either of these data sets become publically available, they will be integrated into the next version of the map. The parcel data and public lands layers are from Los Angeles County. Any revised versions of this adopted map will be sent expeditiously to your department. This PDF of the map will soon be posted to our website [smmc.ca.gov](http://smmc.ca.gov).

Vince Bertoni  
City Planning Department  
Eastern Santa Monica Mountains Habitat Linkage Planning Map  
May 8, 2017  
Page 2

Please distribute the map widely and incorporate the information into the City's environmental review and planning processes without delay. The GIS shape files are available on request; however, it is important to note that the layers project slightly differently between the various years and aerial photography platforms. We hope your staff embraces this new and long overdue tool to protect key natural resources in the Santa Monica Mountains. Plotter sized prints for your department are available upon request.

Please address all questions and inquiries to my attention at the above letterhead address, [edelman@smmc.ca.gov](mailto:edelman@smmc.ca.gov), and 310-589-3200 ext. 128.

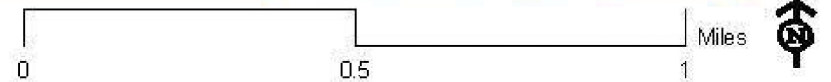
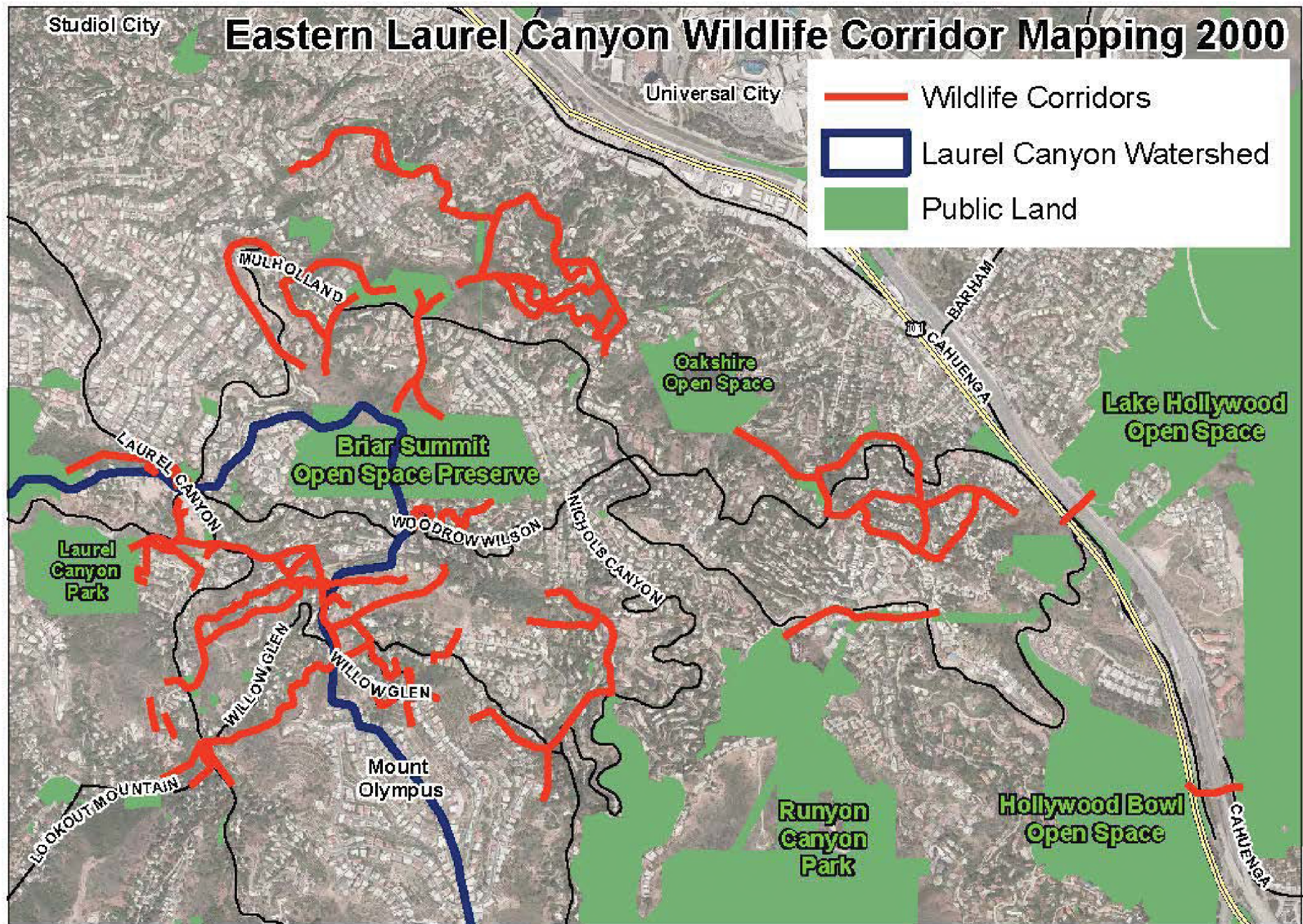
Sincerely,

A handwritten signature in blue ink, appearing to read 'Paul Edelman', with a long horizontal flourish extending to the right.

PAUL EDELMAN  
Deputy Director  
Natural Resources and Planning



# Eastern Laurel Canyon Wildlife Corridor Mapping 2000





# Habitat Linkages Leading North and East from Lookout Mountain - Stanley Hills Habitat Block

