



OLYMPIA SIGN DISTRICT

1001 W OLYMPIC BOULEVARD
LOS ANGELES, CALIFORNIA

LA GATEWAY LLC

PLANS

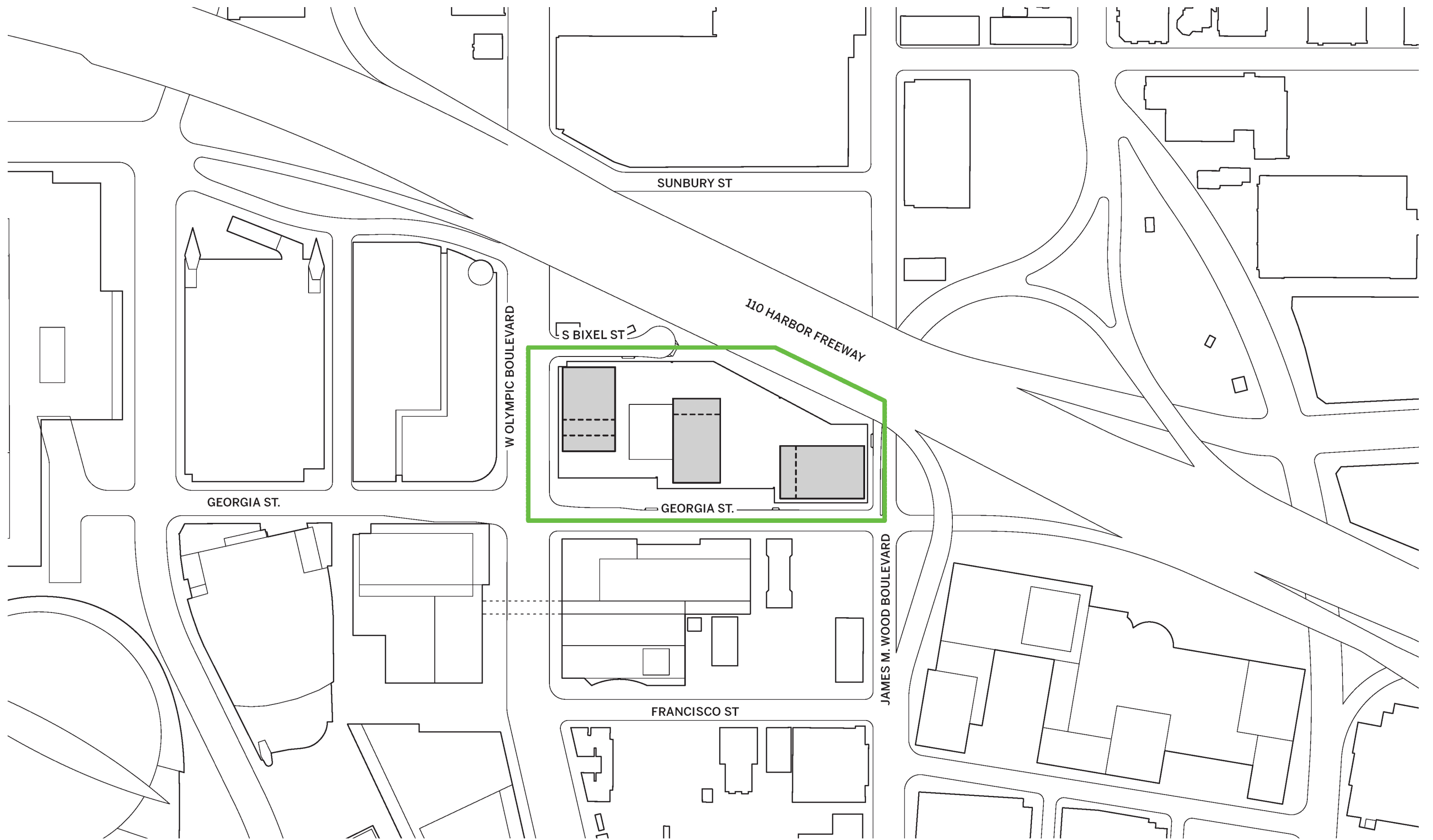
- 02 PROPOSED SIGN DISTRICT PLAN
- 03 SITE LEGAL DESCRIPTION
- 04 PLOT PLAN
- 05 SIGN LOCATION PLAN

ELEVATIONS

- 06 SOUTH ELEVATION
- 07 ENLARGED SOUTH ELEVATION
- 08 EAST ELEVATION
- 09 ENLARGED EAST ELEVATION
- 10 NORTH ELEVATION
- 11 ENLARGED NORTH ELEVATION
- 12 WEST ELEVATION
- 13 ENLARGED WEST ELEVATION

VISUAL SIMULATIONS

- 14 SIGN A VISUAL SIMULATION
- 15 SIGN B VISUAL SIMULATION
- 16 SIGN C VISUAL SIMULATION
- 17 GEORGIA STREET AERIAL RENDERING
- 18 GEORGIA STREET RENDERING



LAND AREA
 141,987 SQUARE FEET
 3.26 ACRES

LEGAL DESCRIPTION

PARCEL 1:
 LOT 12 OF F. J. NETTLETON'S SUBDIVISION OF THE ELLIS TRACT, IN THE CITY OF LOS ANGELES, COUNTY OF LOS ANGELES, STATE OF CALIFORNIA, AS PER MAP RECORDED IN BOOK 10, PAGE 13 OF MISCELLANEOUS RECORDS, IN THE OFFICE OF THE COUNTY RECORDER OF SAID COUNTY.

PARCEL 2:
 LOT 13 OF F. J. NETTLETON'S SUBDIVISION OF THE ELLIS TRACT, IN THE CITY OF LOS ANGELES, COUNTY OF LOS ANGELES, STATE OF CALIFORNIA, AS PER MAP RECORDED IN BOOK 10, PAGE 13 OF MISCELLANEOUS RECORDS, IN THE OFFICE OF THE COUNTY RECORDER OF SAID COUNTY.

PARCEL 3:
 LOTS 1, 3, 4 AND 5 OF TRACT NO. 22148, IN THE CITY OF LOS ANGELES, COUNTY OF LOS ANGELES, STATE OF CALIFORNIA, AS PER MAP RECORDED IN BOOK 667, PAGES 55 AND 56 OF MAPS, IN THE OFFICE OF THE COUNTY RECORDER OF SAID COUNTY.

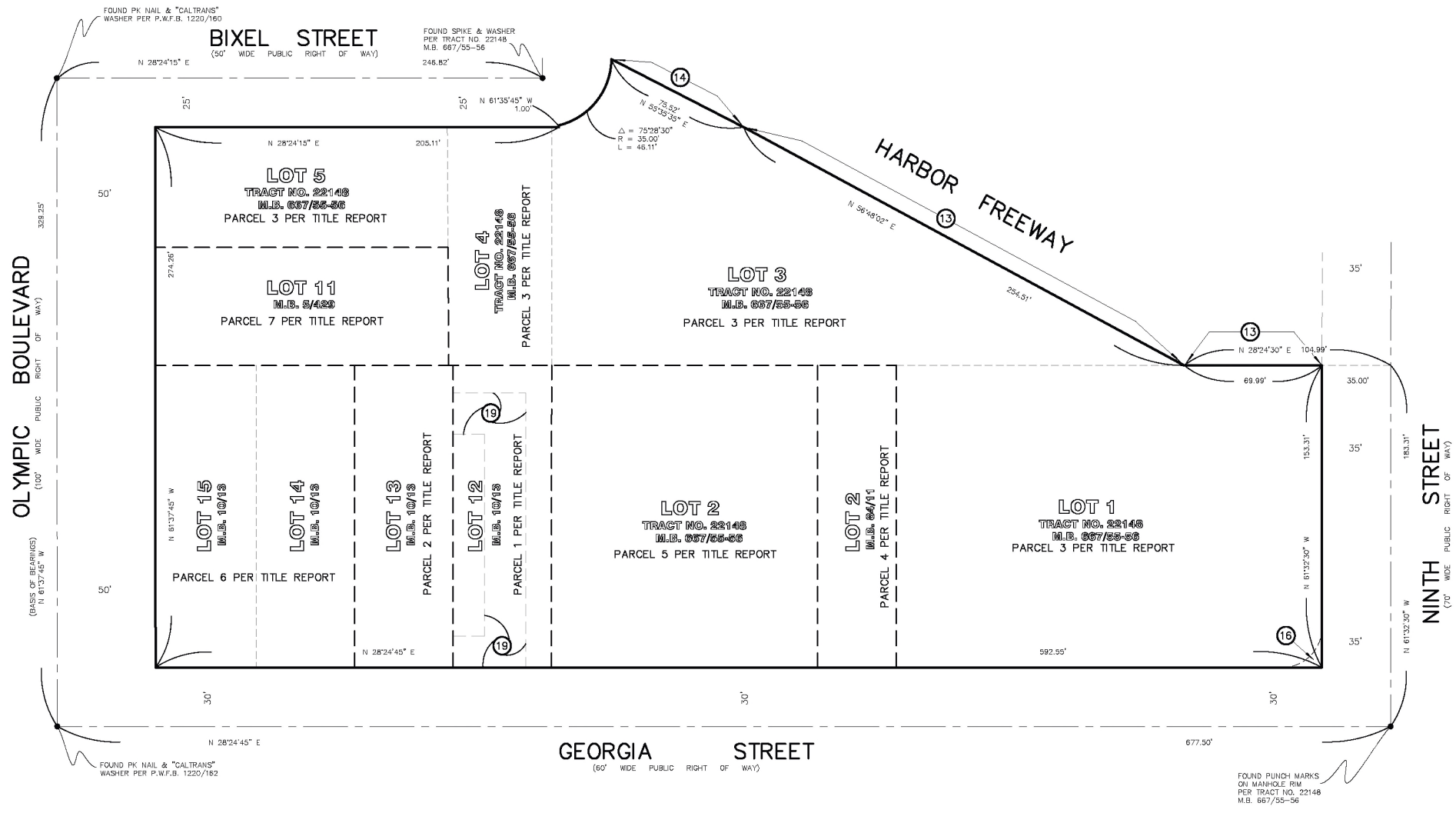
PARCEL 4:
 LOT 2 OF GEORGE W. STIMSON'S SUBDIVISION OF LOTS 7, 8 AND 9 OF F. J. NETTLETON'S SUBDIVISION OF THE ELLIS TRACT, IN THE CITY OF LOS ANGELES, COUNTY OF LOS ANGELES, STATE OF CALIFORNIA, AS PER MAP RECORDED IN BOOK 84, PAGE 11 OF MISCELLANEOUS RECORDS OF SAID COUNTY.

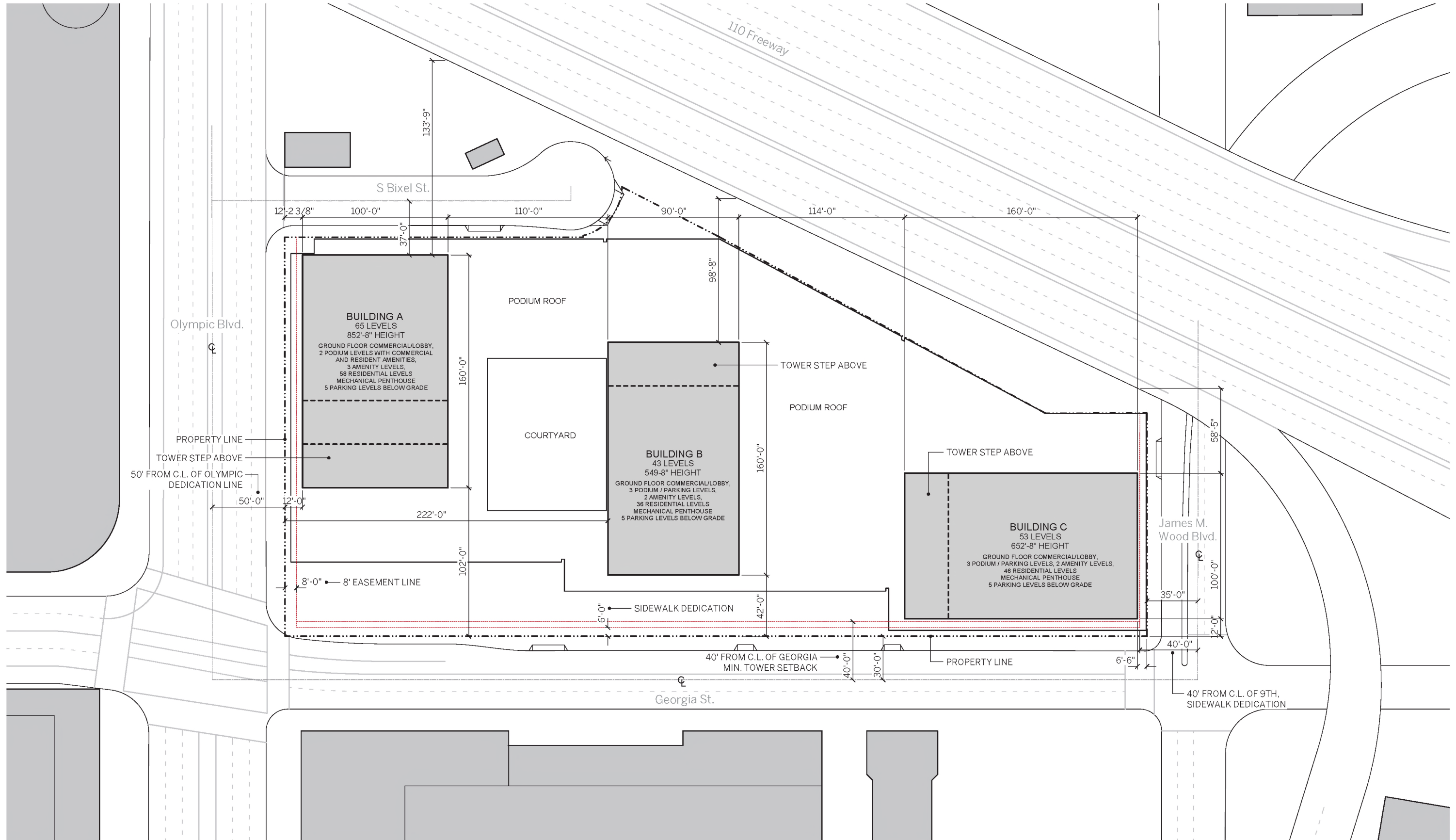
PARCEL 5:
 LOTS 2 OF TRACT NO. 22148, IN THE CITY OF LOS ANGELES, COUNTY OF LOS ANGELES, STATE OF CALIFORNIA, AS PER MAP RECORDED IN BOOK 667, PAGES 55 AND 56 OF MAPS, IN THE OFFICE OF THE COUNTY RECORDER OF SAID COUNTY.

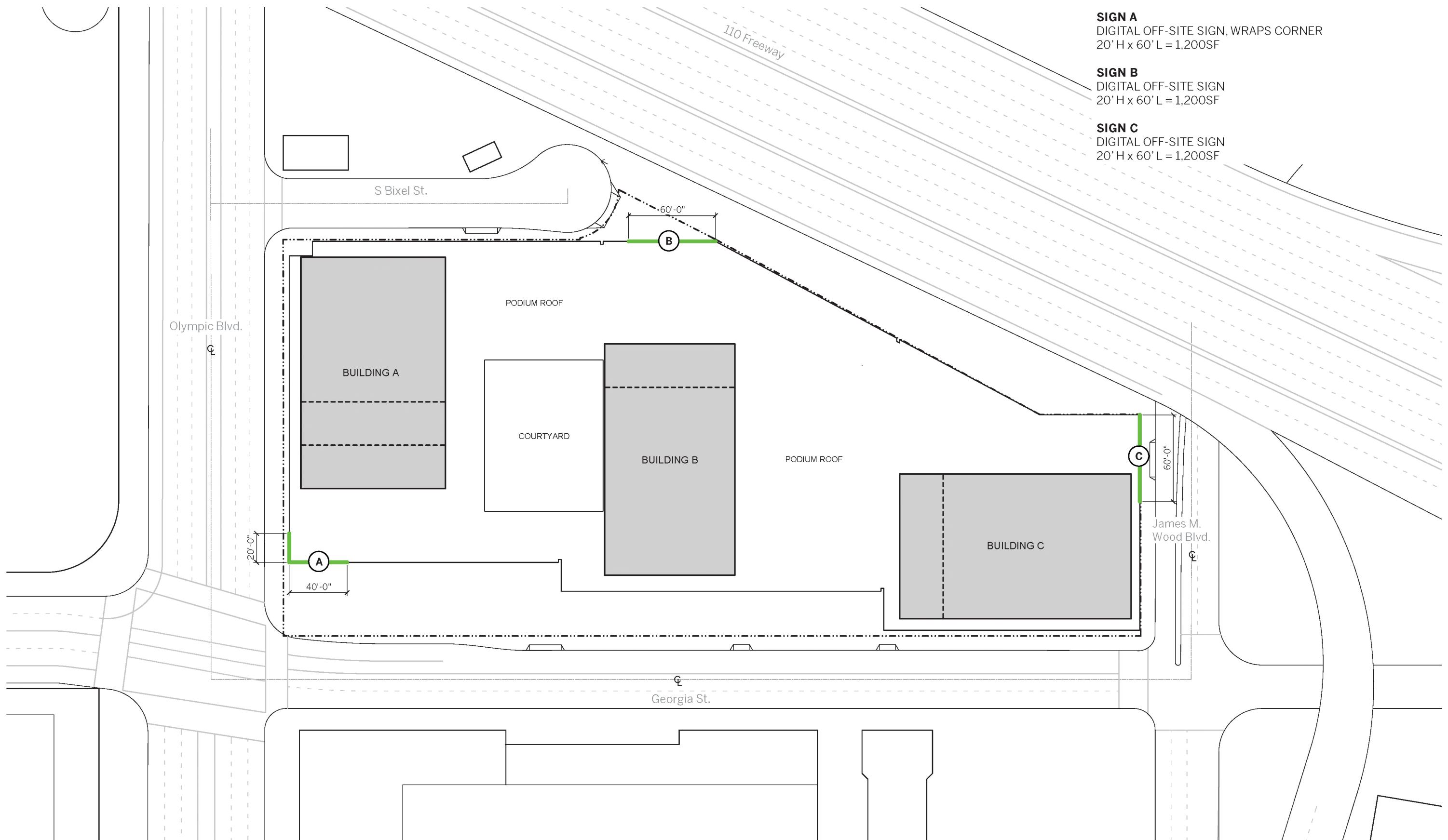
PARCEL 6:
 LOTS 14 AND 15 OF F. J. NETTLETON'S SUBDIVISION OF THE ELLIS TRACT, IN THE CITY OF LOS ANGELES, COUNTY OF LOS ANGELES, STATE OF CALIFORNIA, AS PER MAP RECORDED IN BOOK 10, PAGE 13 OF MISCELLANEOUS RECORDS, IN THE OFFICE OF THE COUNTY RECORDER OF SAID COUNTY.

PARCEL 7:
 LOT 11 OF MERRIAM MARSH AND GARDNER'S SUBDIVISION OF PART OF LOT 1 IN BLOCK 36 OF HANCOCK'S SURVEY, IN THE CITY OF LOS ANGELES, IN THE COUNTY OF LOS ANGELES, STATE OF CALIFORNIA, AS PER MAP RECORDED IN BOOK 5, PAGE 429 OF MISCELLANEOUS RECORDS, IN THE OFFICE OF THE COUNTY RECORDER OF SAID COUNTY.

FIELD WORK WAS COMPLETED ON 1-26-16.
 O.K.O. ENGINEERING INC.
 MICHAEL FURLONG, PLS 8899





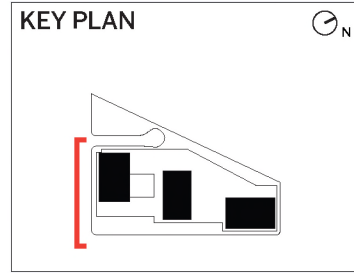


SIGN A
DIGITAL OFF-SITE SIGN, WRAPS CORNER
20' H x 60' L = 1,200SF

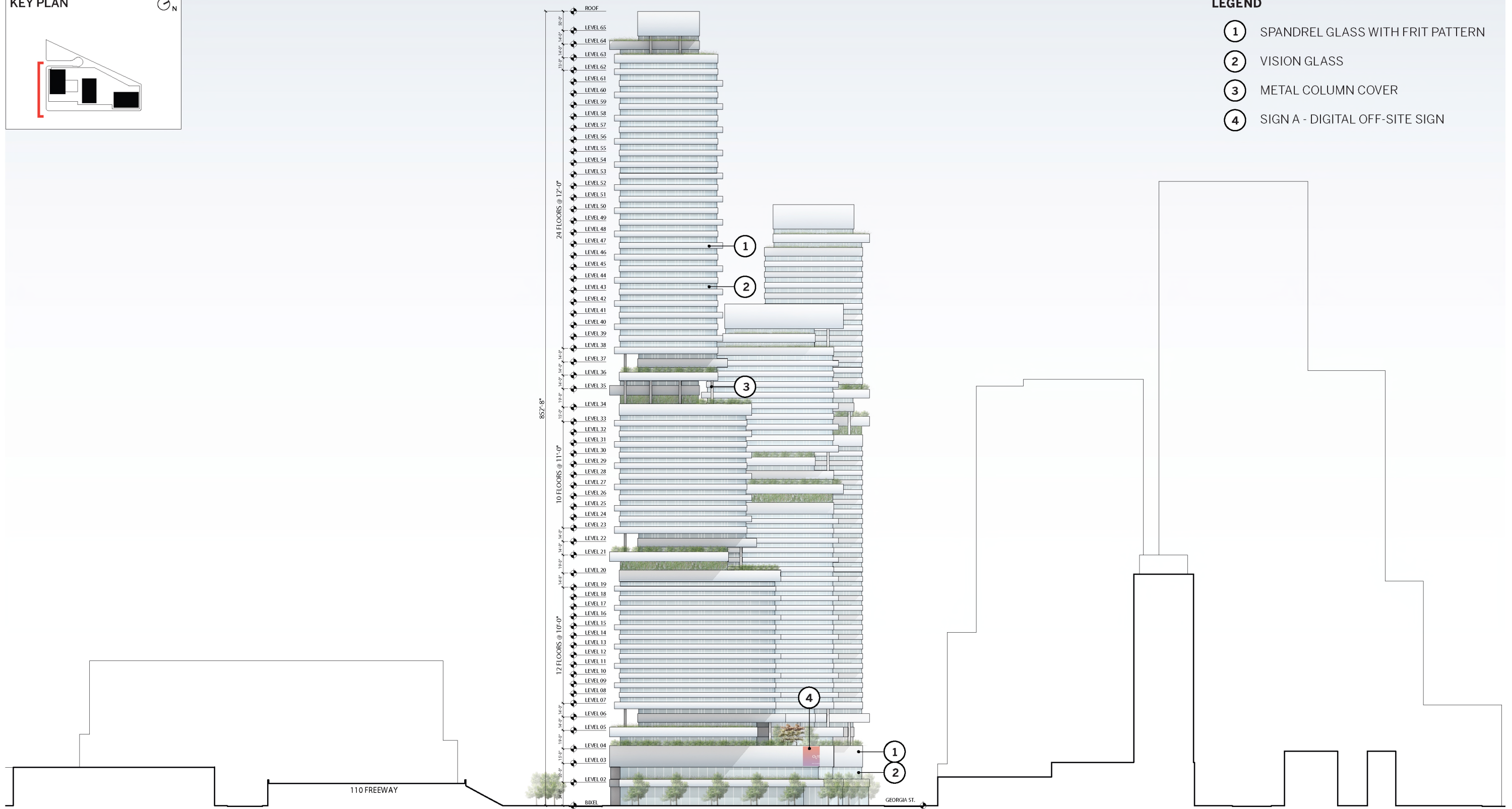
SIGN B
DIGITAL OFF-SITE SIGN
20' H x 60' L = 1,200SF

SIGN C
DIGITAL OFF-SITE SIGN
20' H x 60' L = 1,200SF



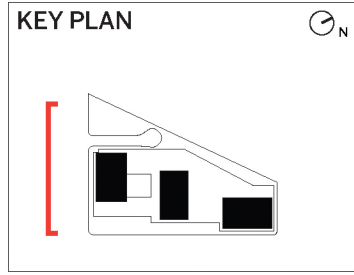


- LEGEND**
- ① SPANDREL GLASS WITH FRIT PATTERN
 - ② VISION GLASS
 - ③ METAL COLUMN COVER
 - ④ SIGN A - DIGITAL OFF-SITE SIGN

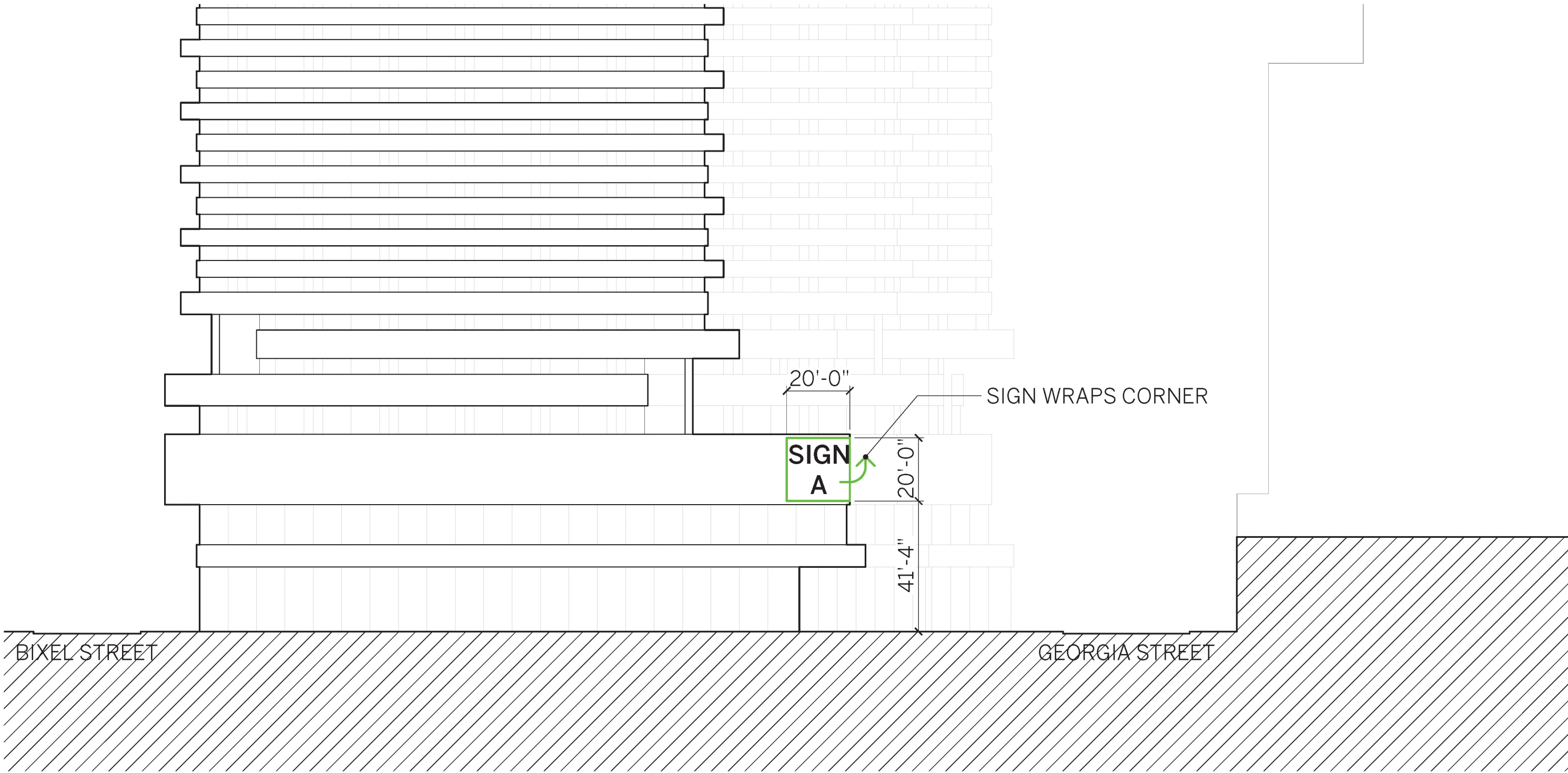


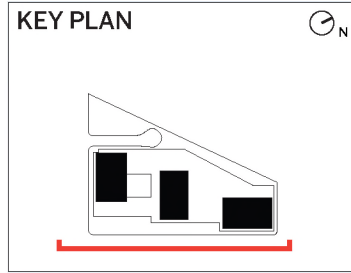
SOUTH ELEVATION
1"=90'

OLYMPIA SIGN DISTRICT
1001 W OLYMPIC | OLYMPIA

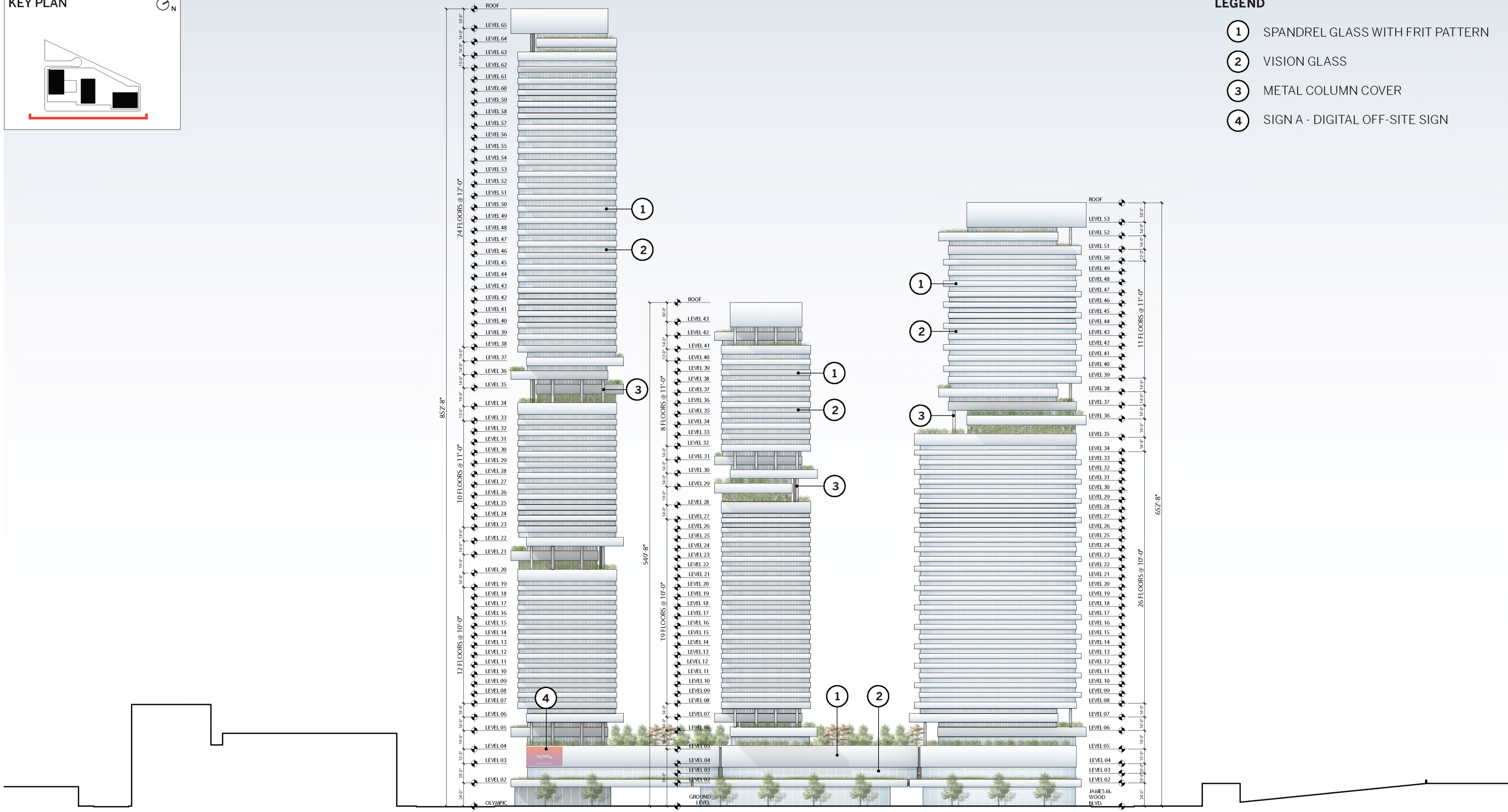


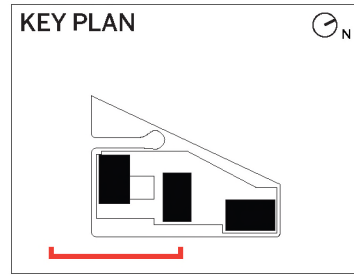
SIGN A
 DIGITAL OFF-SITE SIGN, WRAPS CORNER
 20' H x 60' L = 1,200SF



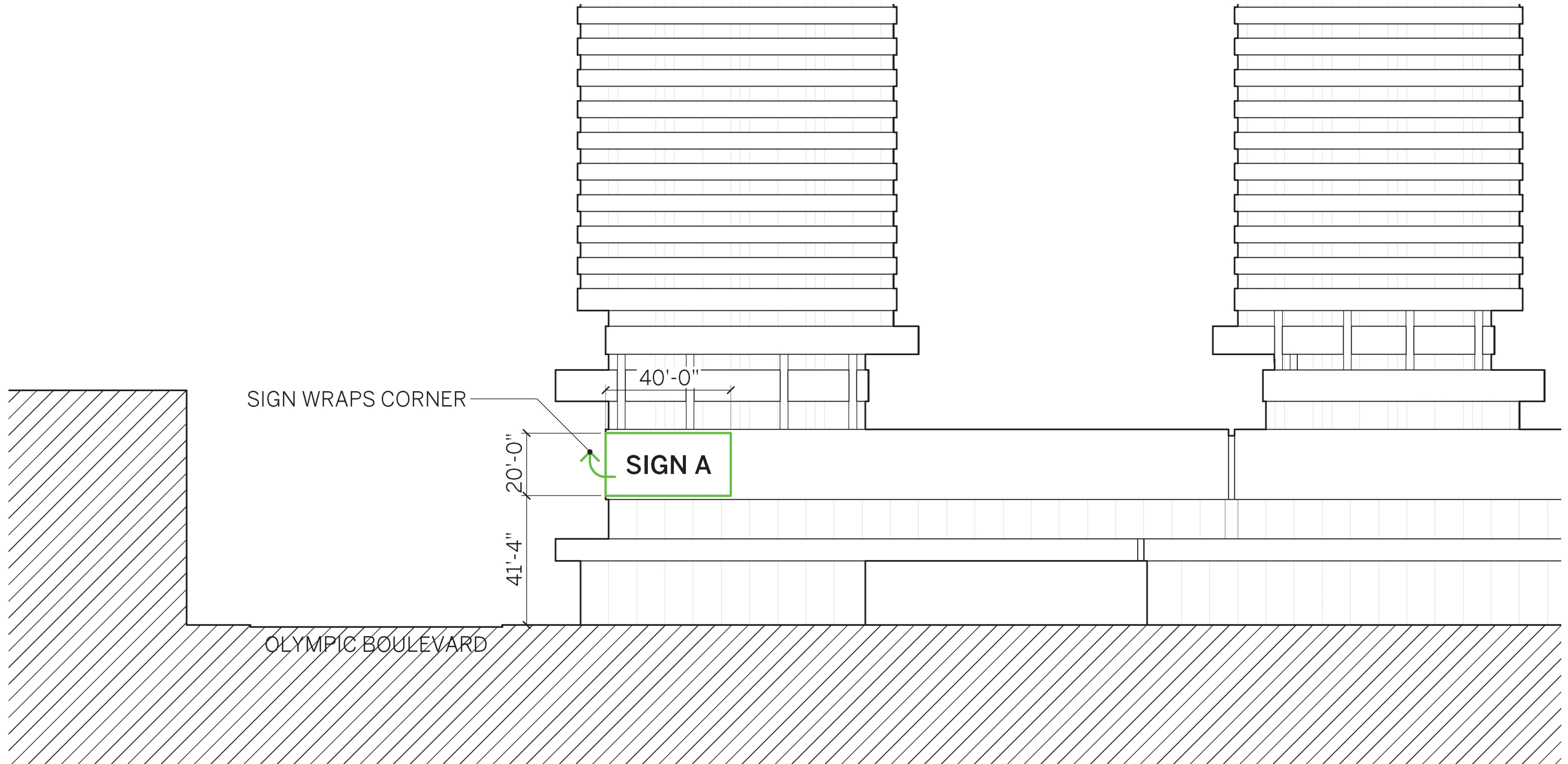


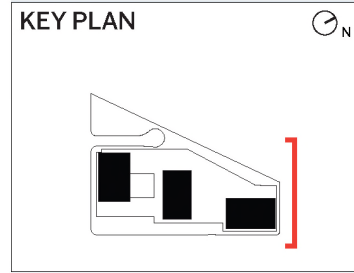
- LEGEND**
- ① SPANDREL GLASS WITH FRIT PATTERN
 - ② VISION GLASS
 - ③ METAL COLUMN COVER
 - ④ SIGN A - DIGITAL OFF-SITE SIGN



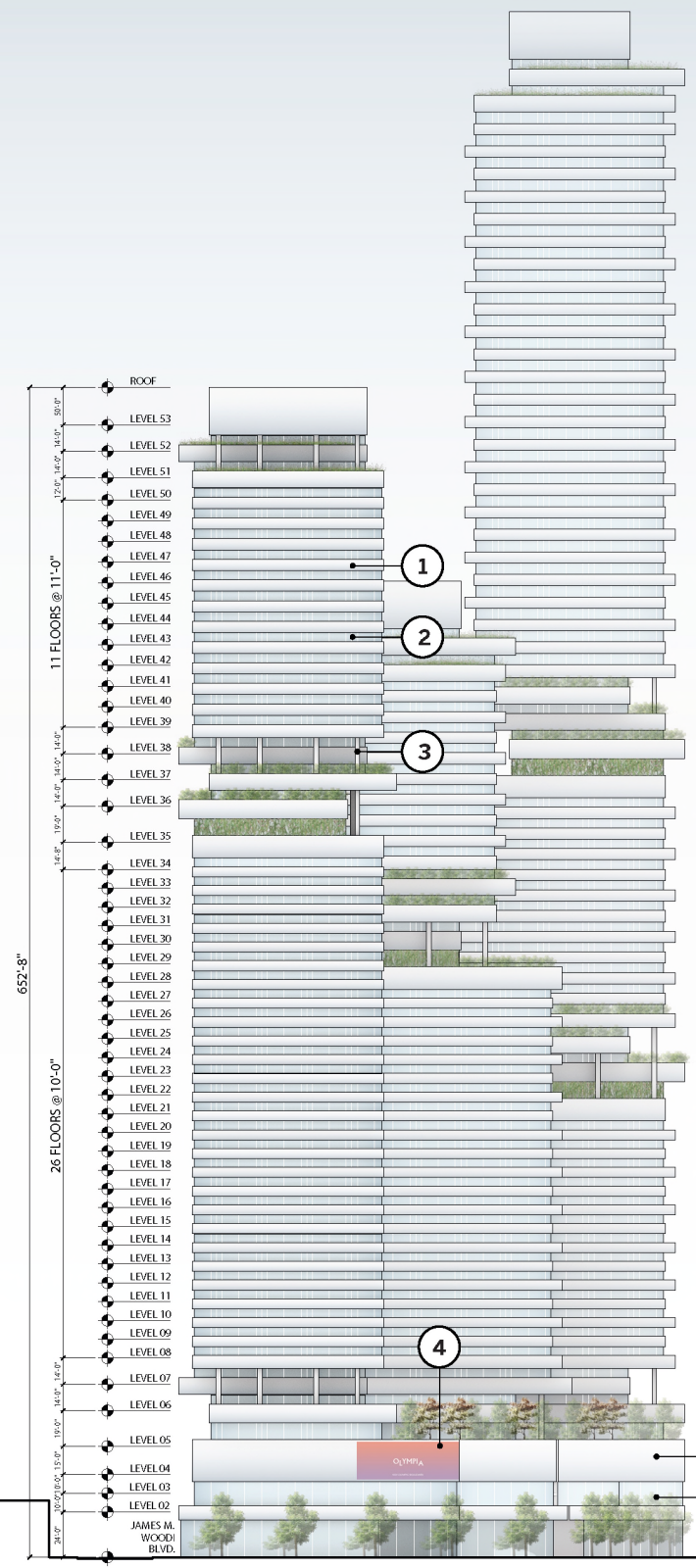


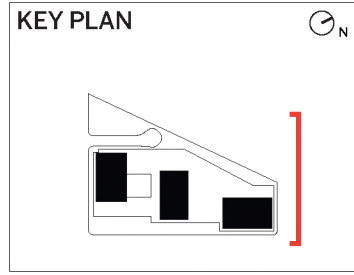
SIGN A
DIGITAL OFF-SITE SIGN, WRAPS CORNER
20' H x 60' L = 1,200SF



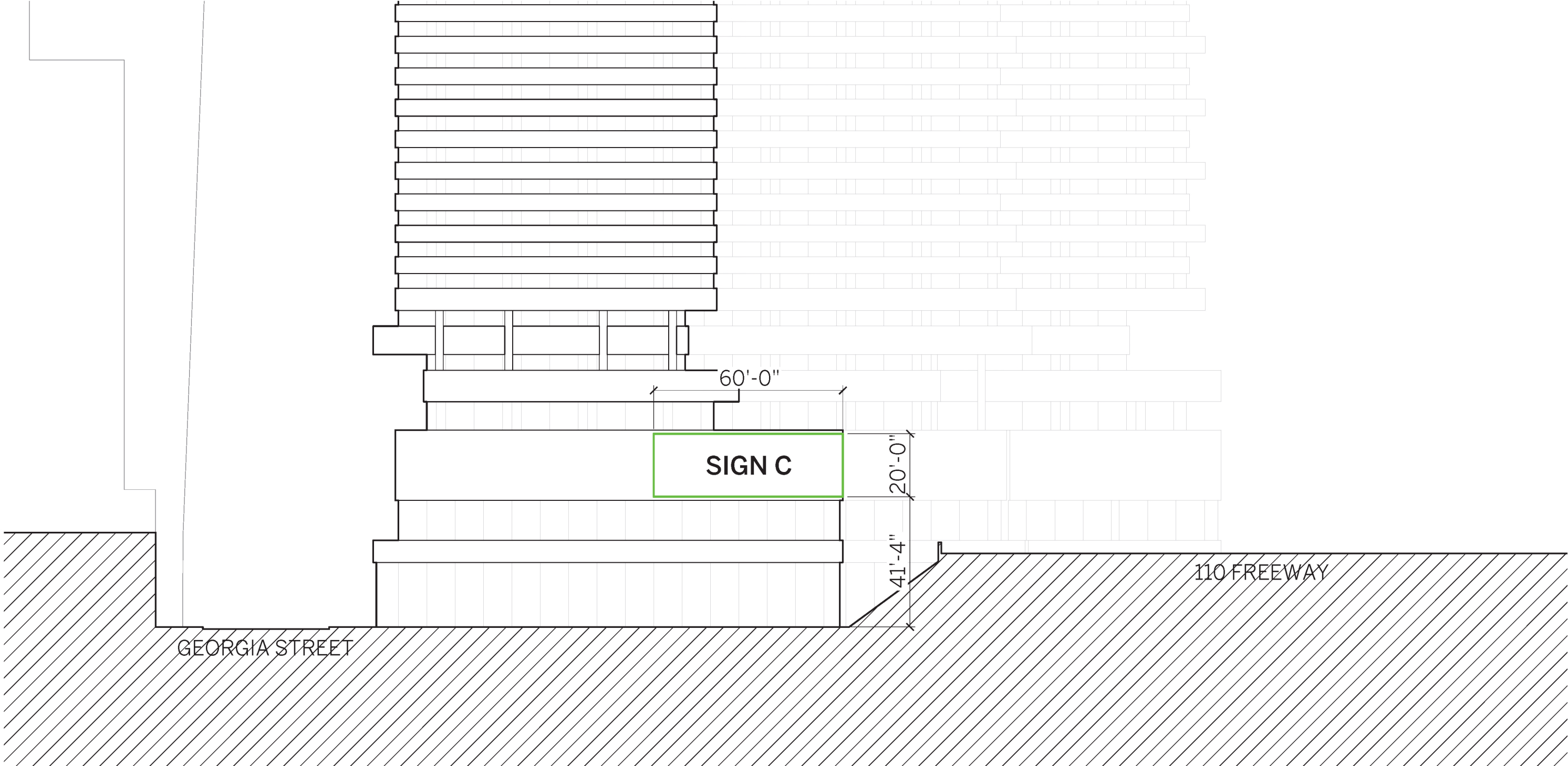


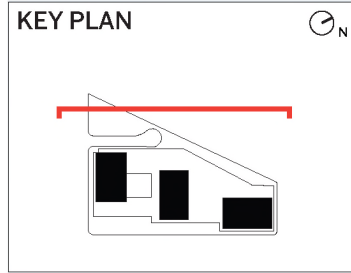
- LEGEND**
- ① SPANDREL GLASS WITH FRIT PATTERN
 - ② VISION GLASS
 - ③ METAL COLUMN COVER
 - ④ SIGN C - DIGITAL OFF-SITE SIGN



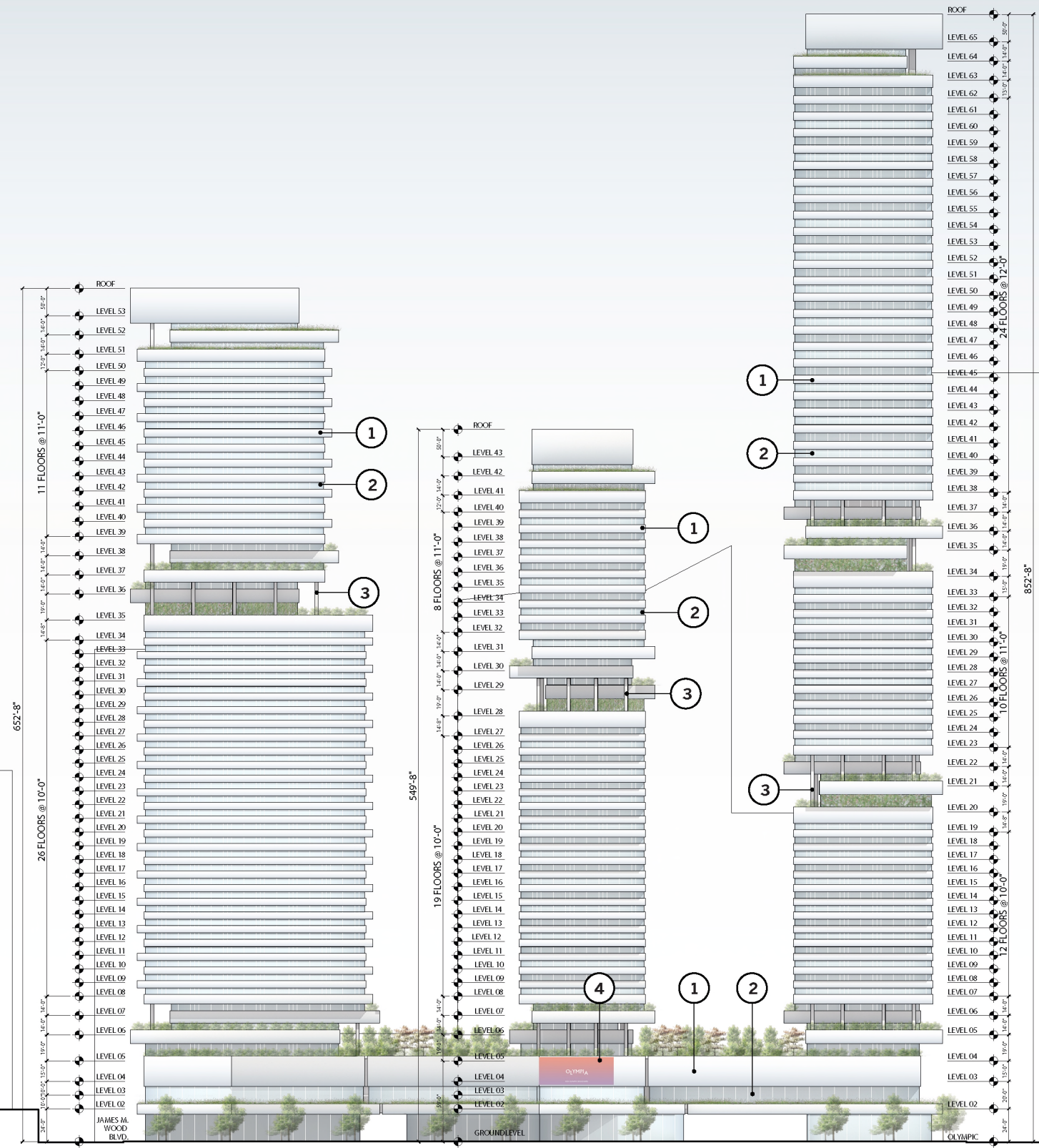


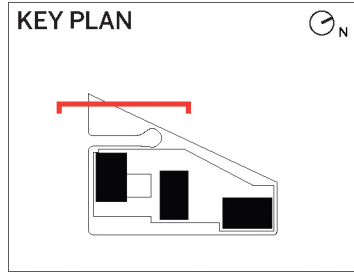
SIGN C
 DIGITAL OFF-SITE SIGN
 20' H x 60' L = 1,200SF



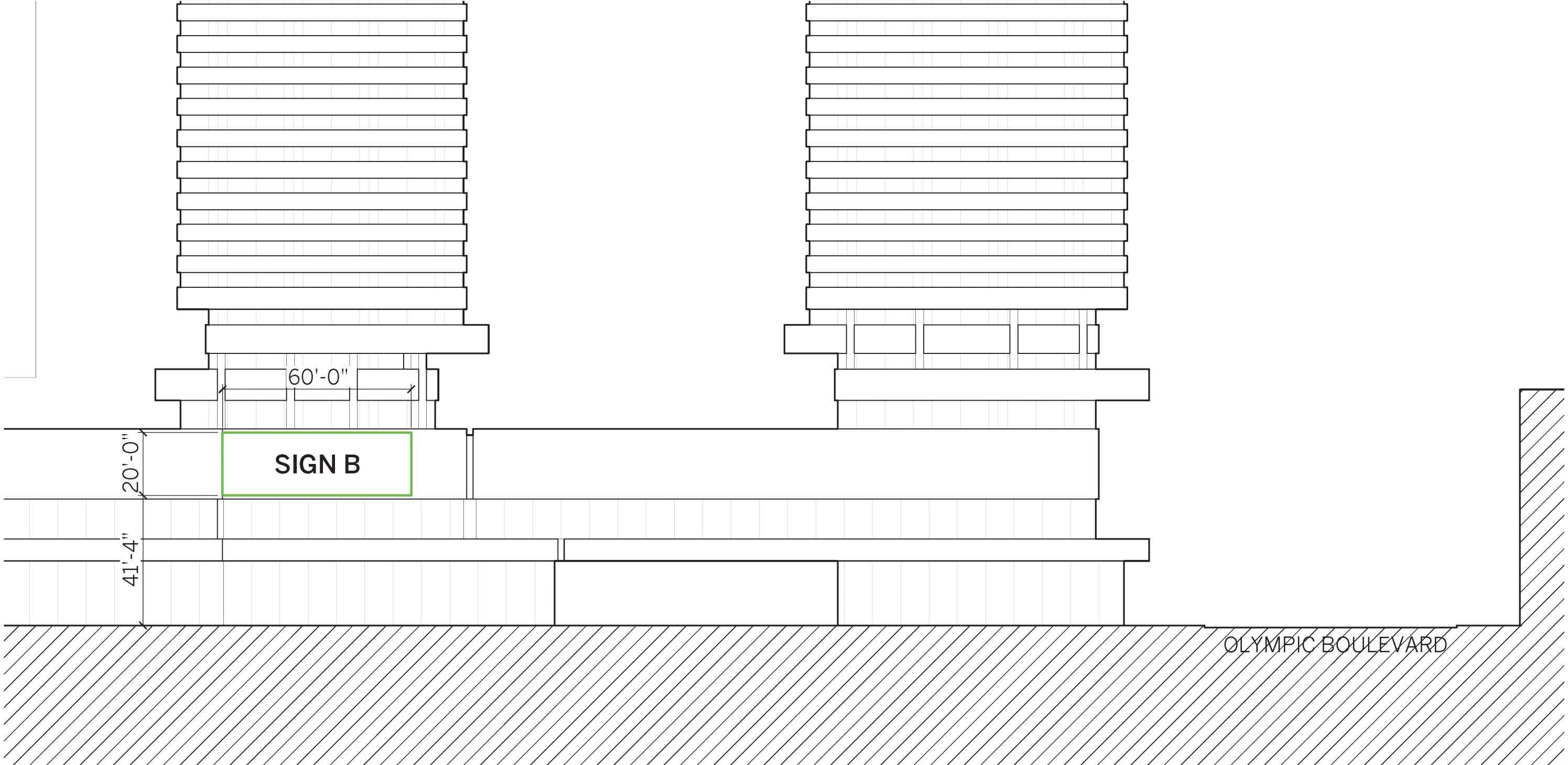


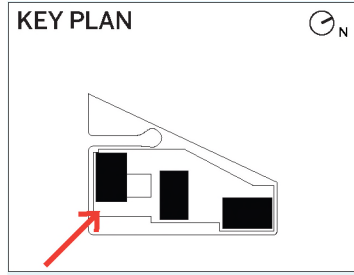
- LEGEND**
- ① SPANDREL GLASS WITH FRIT PATTERN
 - ② VISION GLASS
 - ③ METAL COLUMN COVER
 - ④ SIGN B - DIGITAL OFF-SITE SIGN



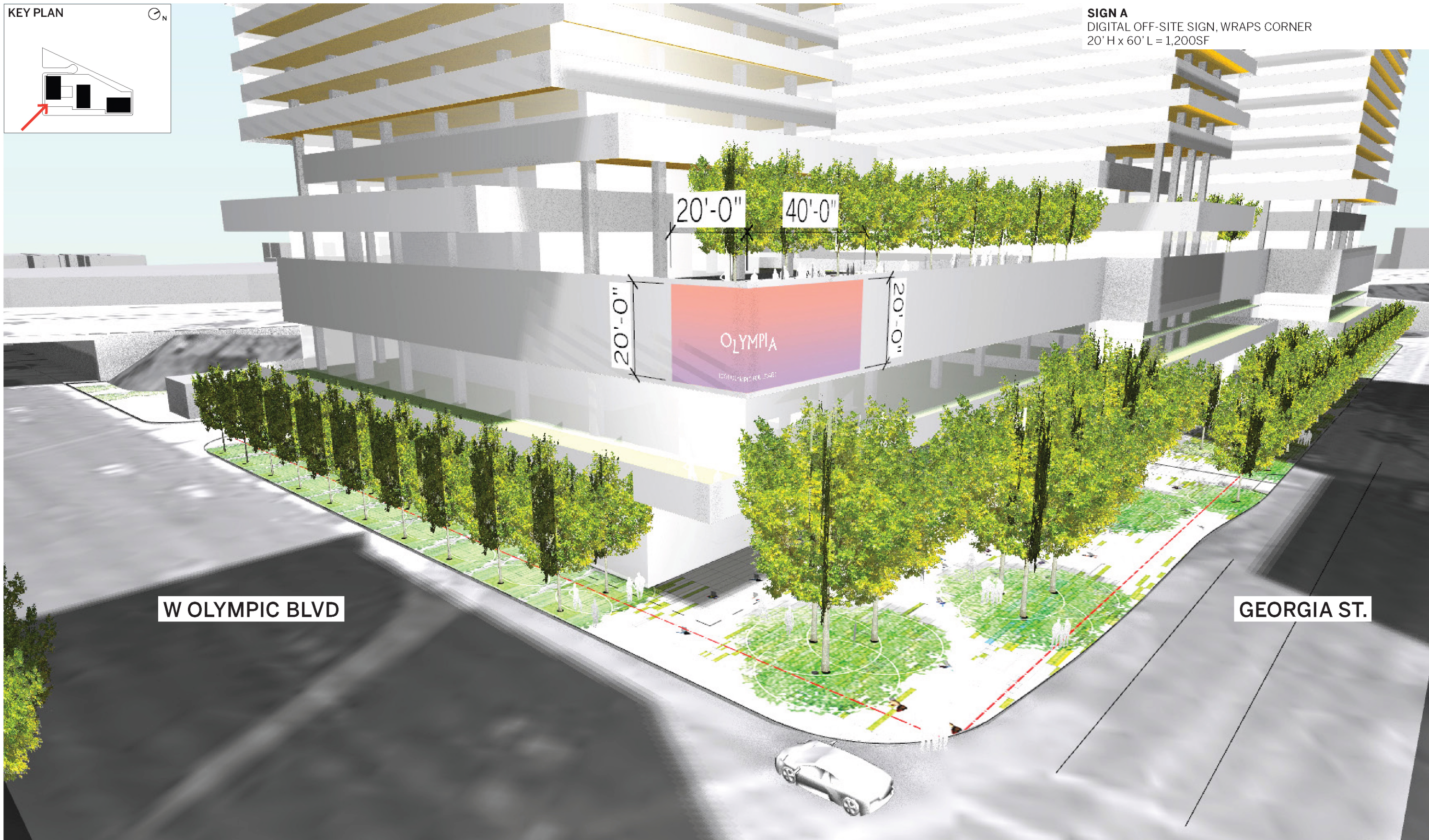


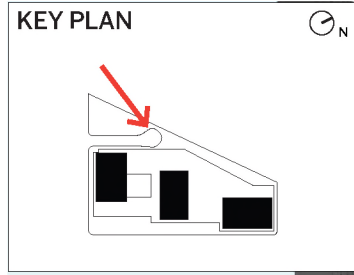
SIGN B
 DIGITAL OFF-SITE SIGN
 20' H x 60' L = 1,200SF





SIGN A
DIGITAL OFF-SITE SIGN, WRAPS CORNER
20' H x 60' L = 1,200SF





SIGN B
DIGITAL OFF-SITE SIGN
20' H x 60' L = 1,200SF



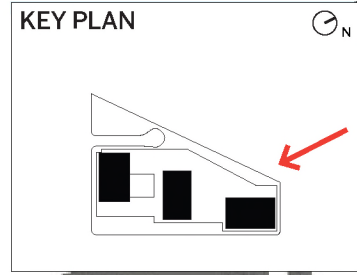
110 HARBOR FREEWAY

60'-0"

20'-0"

OLYMPIA

101 W OLYMPIC BL. | FWARE



SIGN C
DIGITAL OFF-SITE SIGN
20' H x 60' L = 1,200SF



JAMES M. WOOD BLVD.

110 HARBOR FREEWAY





