

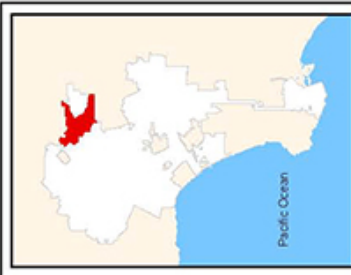
Communication from Public

Name: Cindy Bloom

Date Submitted: 11/01/2021 10:54 AM

Council File No: 20-0668-S7

Comments for Public Posting: This last map adopted by the commission is nearly there. The only problem remains in the Stonehurst area which, by its community character and interests, is part of the greater Shadow Hills/La Tuna Canyon and Lake View Terrace community. These are also largely equestrian properties and should be part of CD7, not CD6. The population is low enough that moving them to CD7 does not materially impact the population figures. The Foothill Trails Neighborhood Council has submitted both oral and written comments/CIS urging that their NC not be split between two council districts. Correcting the boundaries by including the western side of Stonehurst and streets west of Stonehurst in CD7, will achieve two goals: (1) Keeping the equestrian communities united; and (2) keeping all FTDNC communities within the CD7 boundaries. I urge you to make this small yet essential change to the commission adopted map. Please refer to attachment. Thank you.



FOOTHILL TRAILS DISTRICT

COUNCIL DISTRICT: 02, 07

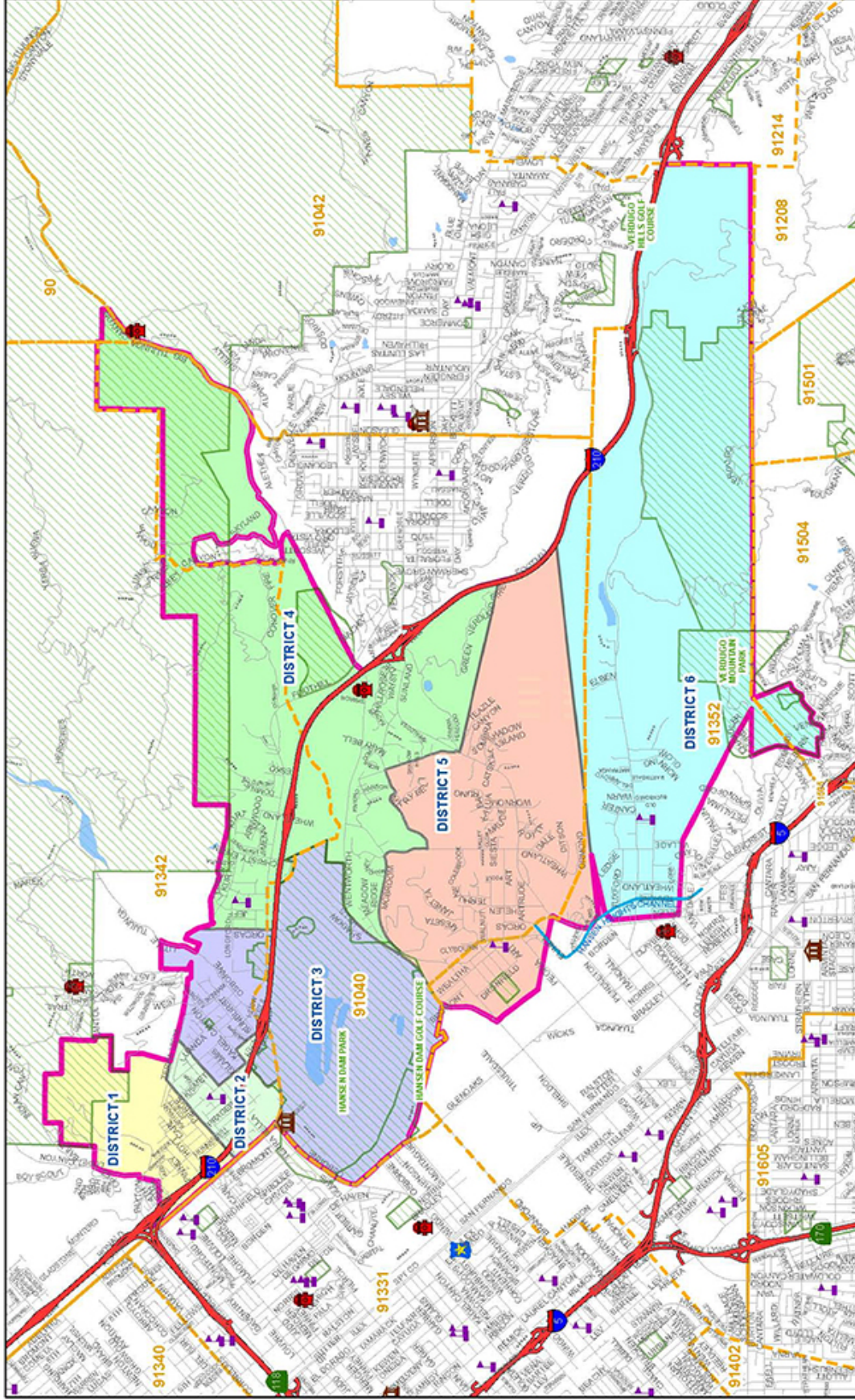
Election Division
NCE Section
(213) 978-0001
<http://cityclerk.lacity.org/election>

- Library
- Fire Station
- Police Station
- School
- Freeway
- Zip Codes
- Rec Areas
- Water



NOT TO SCALE

Copyright © 2009 City of Los Angeles
Prepared by City Clerk Systems Division (May 23, 2009)
This map is for informational purposes only and does not constitute a legal document.
Part thereof, whether for distribution or resale, without
The prior written permission of the City Clerk.
Street Copyright (c) 2008 Thomas Bros. Maps



Office of the City Clerk
Systems Division



Office of the City Clerk
Election Division

FOOTHILL TRAILS DISTRICT NEIGHBORHOOD COUNCIL

OFFICE OF THE CITY CLERK
CITY OF LOS ANGELES



ANTONIO R. VILLARAIGOSA
MAYOR