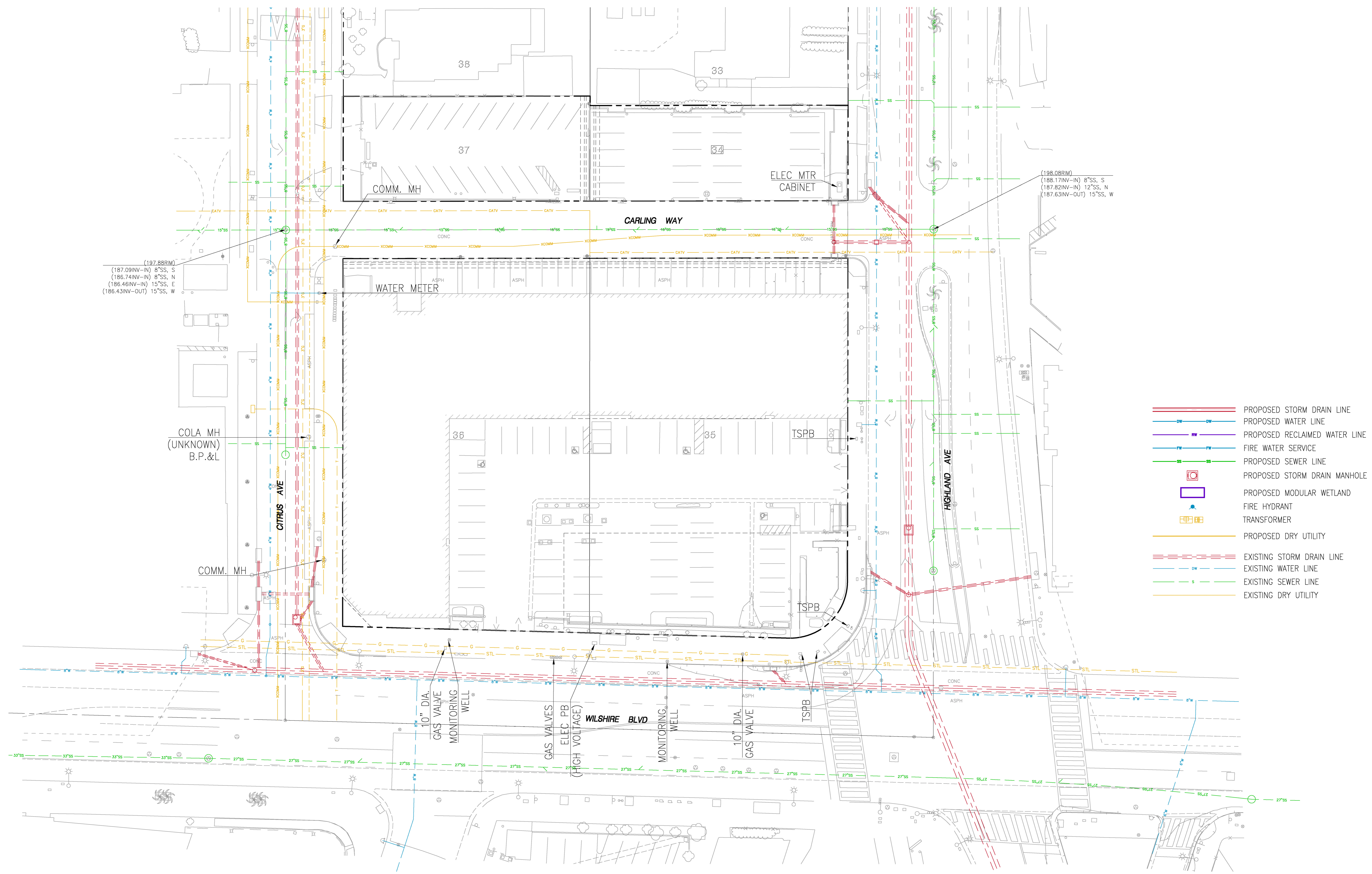


APPENDIX I

Utilities Composite



(197.88RIM)
 (187.09INV-IN) 8"SS, S
 (186.74INV-IN) 8"SS, N
 (186.46INV-IN) 15"SS, E
 (186.43INV-OUT) 15"SS, W

(188.08RIM)
 (188.17INV-IN) 8"SS, S
 (187.82INV-IN) 12"SS, N
 (187.63INV-OUT) 15"SS, W

COLA MH
 (UNKNOWN)
 B.P.&L

COMM. MH

10" DIA
 GAS VALVE
 MONITORING
 WELL

GAS VALVES
 ELEC PB
 (HIGH VOLTAGE)

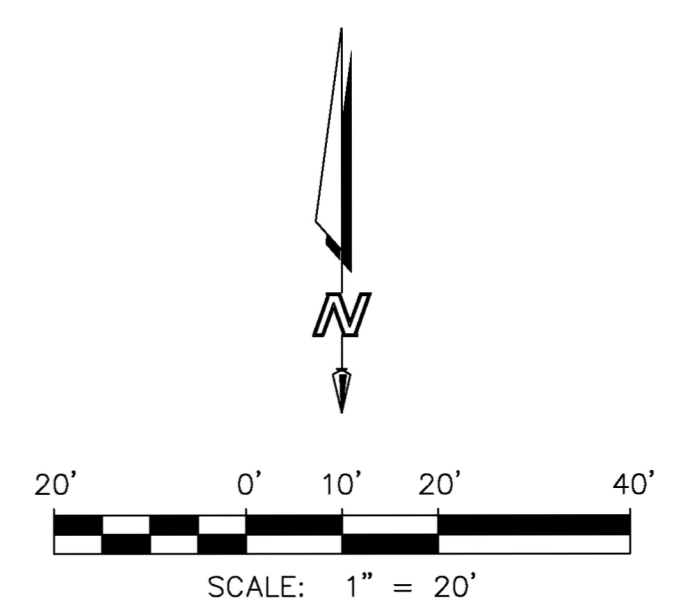
MONITORING
 WELL

10" DIA
 GAS VALVE

COMPOSITE UTILITY EXHIBIT

WILSHIRE / HIGHLAND

JANUARY 6, 2021



- PROPOSED STORM DRAIN LINE
- PROPOSED WATER LINE
- PROPOSED RECLAIMED WATER LINE
- FIRE WATER SERVICE
- PROPOSED SEWER LINE
- PROPOSED STORM DRAIN MANHOLE
- PROPOSED MODULAR WETLAND
- FIRE HYDRANT
- TRANSFORMER
- PROPOSED DRY UTILITY
- EXISTING STORM DRAIN LINE
- EXISTING WATER LINE
- EXISTING SEWER LINE
- EXISTING DRY UTILITY