



# **CITY OF LOS ANGELES GREENHOUSE GAS EMISSIONS INVENTORY 2023**



# INTRODUCTION

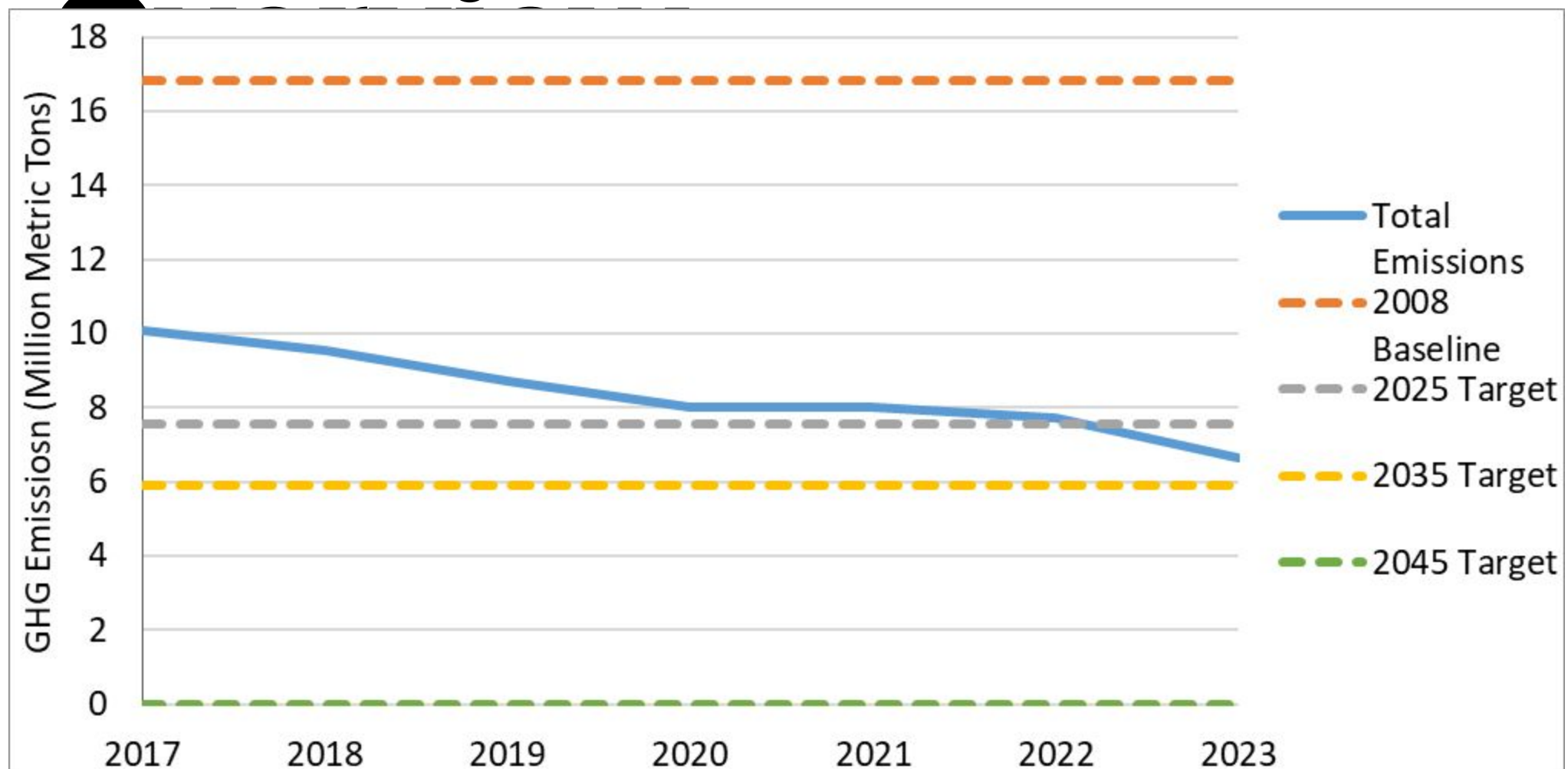
- **Emission Inventories:**
  - **Municipal Greenhouse Gas**
    - Emissions generated directly from City's municipal operations
  - **Community Greenhouse Gas**
    - Emissions generated within City of LA boundaries
- **Key Findings**



# Municipal Breakdown Overview

- Building and Other Facilities
- Streetlights and Traffic Signals
- Water Delivery Facilities
- Water Reclamation Facilities
- Port Facilities
- Airport Facilities
- Vehicle and Transit Fleet
- Power Generation Facilities
- Solid Waste Facilities

# Municipal



- **Trend of Overall Emissions:**
  - As of 2023, 63% reduction below 2008 baseline
  - About 8% ahead of the 2025 Target (55% reduction from 2008 baseline set by 2019 Green New Deal)



# Municipal Key Findings

## **Power Generation(77%):**

Emissions decreased by 11.6% from 2022 to 2023, with a total reduction of 43% since 2008 due to the shift towards renewable energy.

## **Buildings and Facilities(~5%):**

Emissions dropped by 5% from 2022 to 2023, achieving a 51% reduction compared to 2008.

## **Water Delivery and Reclamation(~4%):**

Emissions dropped by 68% since 2008 due to improved efficiency and a cleaner power grid.

## **Vehicle and Transit Fleets (~5 & 1%):**

Vehicle Fleet emissions decreased by 5% in 2023 (28% reduction from 2008).  
Transit Fleet emissions dropped by 6.5%, maintaining a 43% reduction.

## **Solid Waste Management(~5%):**

Emissions decreased by 0.8% in 2023, with a 25% reduction compared to 2008

## **Other Sectors (~3%)-On Track**



# City of LA

## Fleet

## Electrification

## Update

- Department purchases follow the Zero-Emission First fleet procurement policy that can be found in CF21-0680
- 2,862 on-road AFVs reported to us for 2023
- 2,940 Electric, PHEV, and HEV on-road vehicles reported to us for 2023

# Community BASIC Sectors



Stationary



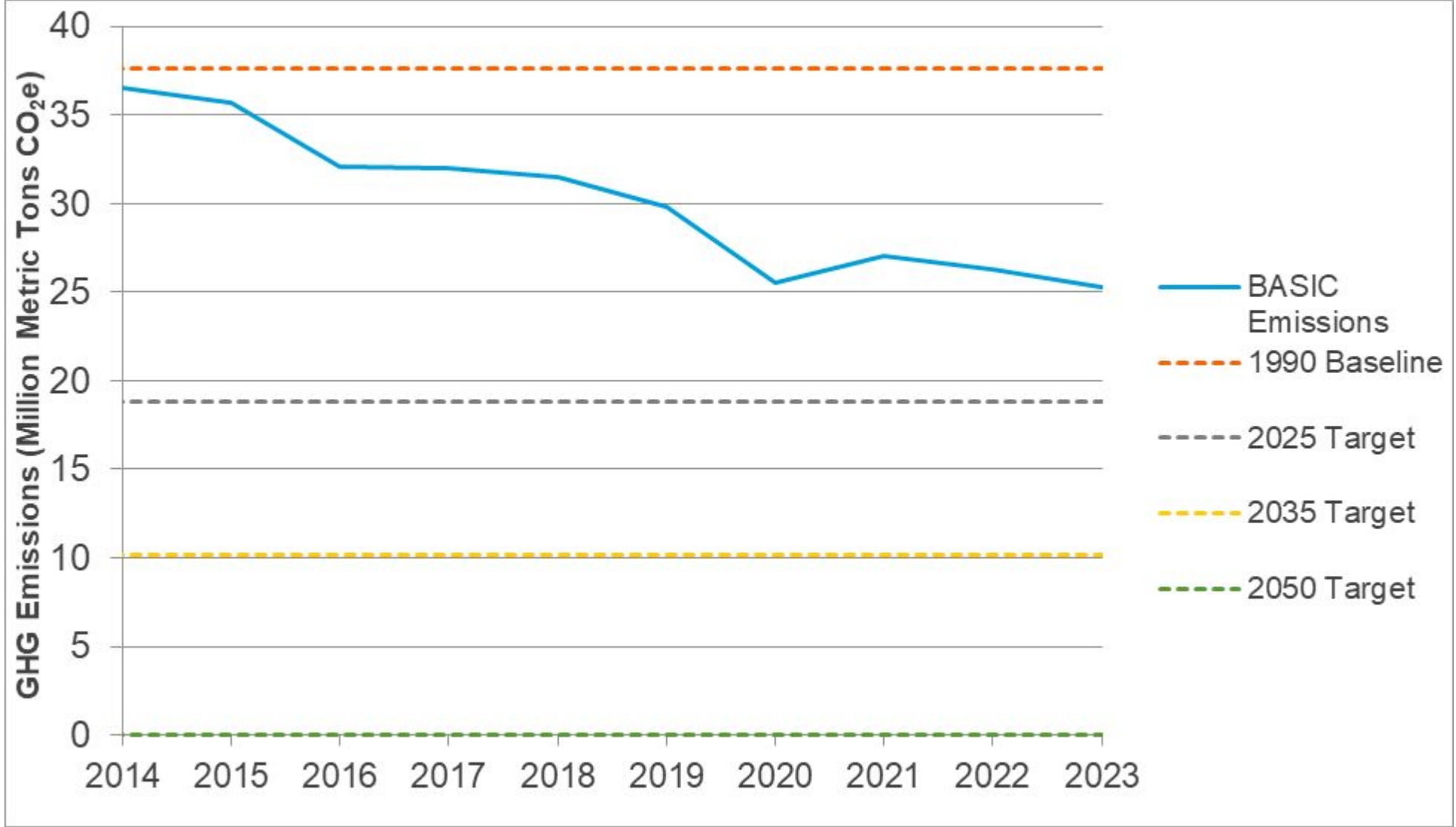
Transportation



Waste

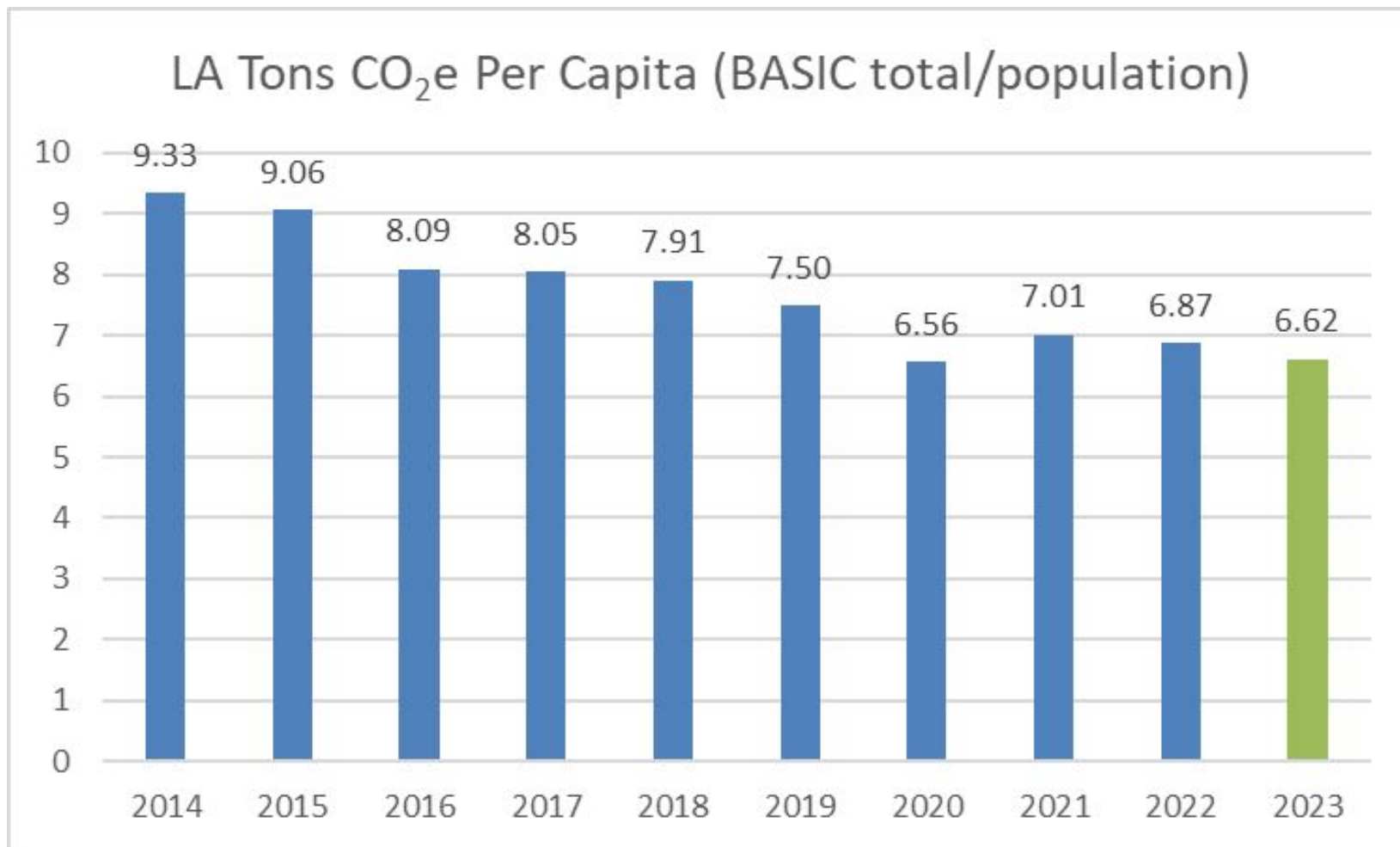
BASIC+ adds scope 3 emissions in these sectors and adds in emissions from Industrial Processes and Product Use and Agriculture, Forestry, and Other Land Use

# Community BASIC Emissions



- **Trend of Overall Emissions:**
  - As of 2023, 33% reduction below 1990 baseline
  - About 17% away from reaching 2025 Target (50% reduction from 1990 baseline set by 2019 Green New Deal)

# Los Angeles Emissions Per Capita Analysis (Tons CO<sub>2</sub>e per Capita)



## Estimates

- California Per Capita 2022 (CARB total/CA population): 9.51
- United States Per Capita: 14.3 - 19.03
- Global Per Capita: 4.7

Global need to be below 2 tons of CO<sub>2</sub> equivalent per person per year by 2050

# Community Key Findings/ Issues

## Stationary Energy (58% - BASIC)



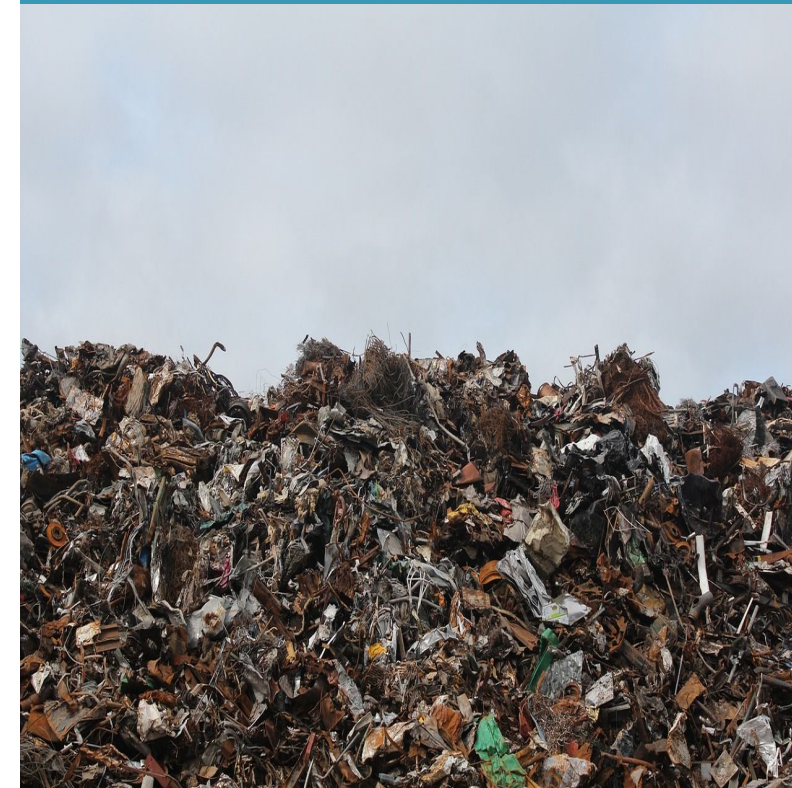
**As of 2023, this sector has seen a 44% emission reduction since 1990.**

## Transportation (36% - BASIC)



**Sector emissions down 12% since the 1990 baseline**

## Waste (6% - BASIC)



**Waste has seen a 25% increase since 1990 driven by rising consumer activity and shopping trends.**

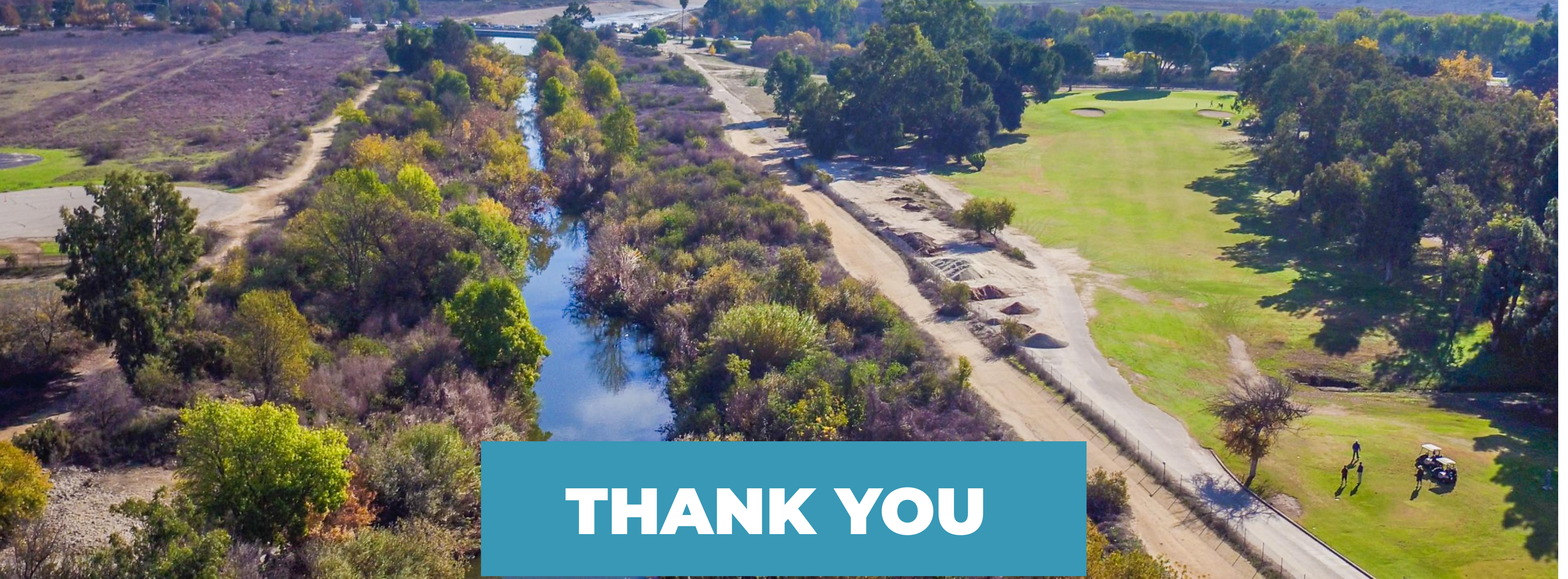
## Industrial Processes and Product Use (BASIC+)



**Since 2014, emissions have risen by 16.5%, primarily due to the increased use of Hydrofluorocarbons and Perfluorocarbons.**

Access our  
2023  
Greenhouse  
Gas Reports





**THANK YOU**



[lacitysan.org/climateaction](https://lacitysan.org/climateaction)



[san.climateaction@lacity.org](mailto:san.climateaction@lacity.org)



(213) 485-3640

