

**REPORT FROM**

**OFFICE OF THE CITY ADMINISTRATIVE OFFICER**

---

Date: November 25, 2025

CAO File No. 0220-06083-0046  
Council File No. 22-1545  
Council District: All Districts

To: The City Council

From: Matthew W. Szabo, City Administrative Officer



Reference: Homelessness Emergency Account

Subject: **HOMELESSNESS EMERGENCY ACCOUNT - GENERAL CITY PURPOSES FUND THIRTY-SECOND STATUS REPORT (C.F 22-1545) AS OF SEPTEMBER 30, 2025**

---

**SUMMARY**

On January 18, 2023, the City Council and Mayor approved the motion (C.F. 23-0033) to establish the Homelessness Emergency Account (HEA) to address the City's homelessness crisis. For FY 2025-26, a total budget of \$72.3 million was approved with \$36.1 million allocated in the Unappropriated Balance. This is the thirty-second status report.

This report requests authority for the City Administrative Officer to transfer Homelessness Emergency Account (HEA) funds at the direction of the Mayor, and a transfer of \$43,261,561.54 from the Inside Safe Reserve Fund to the HEA. Additionally, authority is requested for the Los Angeles Housing Department to amend the agreement with the Los Angeles Homeless Services Authority to reflect up to \$55,768,350 for Inside Safe Service Provider costs and up to \$4,070,440 for the Weingart Congregate Shelter site through June 30, 2026.

**RECOMMENDATION**

1. AUTHORIZE the City Administrative Officer, or designee, to transfer funds from the Homelessness Emergency Account (HEA), Fund No. 100/56, Account No. 000959, at the direction of the Mayor, to support approved, on-going homelessness intervention expenses related to the Inside Safe program.
2. APPROVE and APPROPRIATE \$43,261,561.54 from General City Purposes (GCP) Fund No. 100/56, Account No. 000A15, Inside Safe Reserve Fund to Fund No. 100/56, Account No. 000959, Homelessness Emergency Account to

support approved, on-going homelessness intervention expenses related to the Inside Safe program.

3. AUTHORIZE the General Manager of the Los Angeles Housing Department (LAHD), or their designee, to execute a new, or amend the existing agreement (C-140706), with LAHSA to reflect the following:
  - a. Up to \$55,768,350.00 for Inside Safe Service Provider costs for FY 2025-26 services;
  - b. Up to \$4,070,440.00 for Congregate Shelter Site – Weingart costs for FY 2025-26 services and extend through June 30, 2026;
4. AUTHORIZE the CAO to:
  - a. Prepare Controller instructions or make necessary technical adjustments, including to the names of the Special Fund accounts recommended for this report, to implement the intent of these transactions, and authorize the Controller to implement these instructions; and
  - b. Prepare any additional Controller instructions to reimburse City Departments for their accrued labor, material or permit costs related to projects in this report, to implement the intent of these transactions, and authorize the Controller to implement these instructions.

## **BACKGROUND**

On December 21, 2022, the Mayor issued Executive Directive No. 2, launching the Inside Safe Initiative with the aim of rapidly moving people living in encampments indoors and connecting them with services and housing.

On January 18, 2023, the City Council and Mayor approved the motion (C.F. 23-0033) to establish the Homelessness Emergency Account (HEA) to address the City's homelessness crisis and a budget of \$50 million, of which \$23.5 million originated from the COVID-19 Emergency Response account and \$26.5 million from the Additional Homeless Services - General City Purposes account. The City Council and Mayor also authorized the City Administrative Officer (CAO) to spend the funds as directed by the Mayor, and to provide reports to Council on the expenses incurred and purposes for which the funds were used. For FY 2023-24, the Council and Mayor approved a budget of \$250 million in funding to continue implementation of the Inside Safe Initiative, of which \$65.7 million was appropriated into the HEA and the remainder appropriated into the newly created Inside Safe Reserve Fund account. Transfers from the Inside Safe Reserve Fund into the HEA were contingent upon Council and Mayoral approval. During the annual budget process for FY 2024-25, the Council and Mayor approved \$80 million in funding to the Inside Safe Reserve Fund account and the reappropriation of the unencumbered balances remaining in the HEA and Inside Safe Reserve Fund

account. The City Council and Mayor also authorized the City Administrative Officer to spend the funds as directed by the Mayor, pursuant to monthly expenditure reports and funding allocations to be approved by Council. This new report format was to be inclusive of the requested data from the adopted budget instructions. The FY 2024-25 controlling fund language replaced the language in the 2023-24 Adopted Budget and its related amendment.

During the annual budget process for FY 2025-26, the Council and Mayor approved a budget of \$72.3 million, which consists of an appropriation of \$36.17 million in the HEA and \$36.17 million in the unappropriated balance, and the reappropriation of unencumbered balances remaining in the HEA and Inside Safe Reserve Fund account to continue implementation of the Inside Safe Initiative. The Homelessness Emergency Account is partially funded by revenues from the County-Alliance MOU reimbursements and the State Encampment Resolution Grant.

The total expected revenue from these sources is expected to be \$57.6 million, comprising an anticipated \$35.1 million from the County-Alliance MOU, and \$22.5 million from the State Encampment Resolution Grant. Under the County-Alliance MOU, the County will reimburse the City for eligible services provided by the City's interim housing interventions, as outlined in the Alliance Settlement. The State Encampment Resolution Grant was awarded for the 3.3 mile stretch of the I-10 Freeway to serve approximately 793 people experiencing homelessness (C.F. 25-0216). Of the total \$72.3M budget, \$14.6 million is attributable to a new appropriation from the General Fund.

For FY 2025-26, regular reporting was continued per the Declaration of the Local Emergency. On November 4, 2025, the Mayor lifted the Homelessness Emergency Declaration. This report is the last monthly status report on the Homelessness Emergency Account. Additional reporting is expected to be incorporated into future homelessness funding reports.

## **DISCUSSION**

The initial motion that established the HEA authorized the CAO to disburse funds from the account as directed by the Mayor for implementation of the Inside Safe Initiative, and continued through the end of the Homelessness Emergency Declaration on November 4, 2025. In order to allow the Mayor to continue to make expedited payments from the HEA, this report requests authority to allow the CAO to make transfers from the account at the direction of the Mayor. This would primarily ensure that LAHSA service providers are paid expeditiously.

A transfer of \$43,261,561.54 from the Inside Safe Reserve Fund of prior fiscal year

funding to the HEA is requested to support approved, ongoing homelessness intervention expenses related to the Inside Safe program, such as Service Provider costs.

From July 1, 2025, through September 30, 2025, total expenditures from the FY 2025-26 Homelessness Emergency Account (HEA) were \$20,311,417. This amount includes \$11,461,612 for FY 2025-26 costs, which includes \$8,979,548 for service providers, \$1,687,073 for motel invoices, and \$794,991 in departmental costs. An additional \$8,775,528 was expended for FY 2024-25 costs, which included \$4,907,846 for service providers, \$3,116,211 for motel invoices, \$644,112 for permanent stay (TLS) costs, \$88,950 in operating expenses and \$18,409 for motel facility damage expenses. The remaining \$74,277 includes \$14,280 expended for FY 2023-24 motel facility damage costs and \$59,997 for FY 2022-23 service provider costs.

As a part of the FY 2025-26 budget, an up to amount of \$99.5 million was projected to rollover over from the prior fiscal year. As of the date of this report, a rollover of \$57.8 million has been completed by the Controller's Office. Of the \$57.8 million, it is estimated that \$11.6 million (including \$5.4 million in FY2024-25 LAHSA Service Provider costs) will be needed to pay previous year expenditures, while the remaining \$46.2 million will be re-programmed for this fiscal year.

Attachment 1 summarizes the funding authority for FY 2025-26 and provides a detailed look into current year expenditures. Attachment 2 summarizes expenditures incurred in prior fiscal years as well as providing an overview of the current year budget.

As of September 30, 2025, the available balance in the Homelessness Emergency Account was \$15,868,242.

### **Inside Safe Motel Interim Housing Portfolio**

As part of the Inside Safe operations, participants are connected to housing, typically in the form of City-contracted motel rooms. The two types of contractual motel leasing agreements are booking and occupancy. A booking agreement confirms a fixed nightly rate, but motel rooms used may fluctuate based on the number of participants at a location and room availability. An occupancy agreement includes a fixed nightly rate as well as a guaranteed number of rooms, regardless if they are filled or not.

Attachment 4 provides details on occupancy agreements that have been approved by Council to extend beyond June 2027, along with leasing and service costs associated with them. Calculations are based on estimated execution dates and may be updated in future reports as contracts are finalized.

Table A1 below summarizes Inside Safe Motel Contracts by contract and extension type. The current Inside Safe Motel Interim Housing Portfolio counts towards the Alliance Settlement Agreement obligations. If any interventions are discontinued prior to June 2027, additional interventions counting toward the Alliance Settlement Agreement will need to be identified to replace them. For additional information, refer to C.F. 23-1022 and subsequent council files.

<b>Table A1: Inside Safe Motel Contracts by Type <sup>1</sup></b>		
<b>Contract Type</b>	<b>Motel Count</b>	<b>Room Count</b>
Occupancy Agreements (Through June 2027)	13	467
Occupancy Agreement (Other)	5	216
Booking Agreements	24	535
<b>Totals</b>	<b>42</b>	<b>1,218</b>

<sup>1</sup> The information in this table reflects previous contract amendments as approved by Council and Mayor through September 30, 2025.

<sup>2</sup> Of the 13 contracts, 11 have been executed to extend past June 2027.

For FY 2025-26, the motel interim housing portfolio for Inside Safe is estimated to cost \$55 million. The average nightly rate since the beginning of the program through September 30, 2025, is \$117.93. Nightly rates range from \$87 to \$171 per night, inclusive of Transient Occupancy Tax (TOT) and applicable Los Angeles Tourism Marketing District Tax (LATMD), with two service provider 2-bedroom office rooms costing \$251 per night.

As of September 30, 2025, motel leasing invoices received to date include 3,757 invoices from 58 out of 59 individual hotels, totaling 878,298 hotel room nights since the beginning of the program. One of the motels with an executed booking agreement contract was never occupied. The current number of interim housing hotel rooms available based on invoices received for booking agreements and occupancy agreements through September 30, 2025, is 1,218 rooms, which is inclusive of rooms for service providers' offices and security. It does not account for two or more occupants sharing a room. A total of 16 hotels have been demobilized and are no longer in use since the beginning of the program. Per LAHSA, there are currently 1,205 people residing in hotels (Attachment 3).

### **Operating / Facility Expenses**

Facility expenses include costs for property improvements, repairs/damages, valuation reports, and insurance. Incurred expenses since the beginning of the program total \$3,011,273. To date, the City has received a total of 403 damage claims for hotels of which a total of five have been denied and 113 have been paid. If any of the reviewed

claims were expected to be fraudulent, they were forwarded to the City Attorney. Damage claims from motels previously followed a process similar to the one established for Project Roomkey; the owner (or representative) submits a form that includes pertinent information such as the date of the incident, what was damaged, and requires the on-site service provider's signature. A quote for the repair and pictures are also required.

The Mayor's Office, with assistance from CAO Risk Management, executed a contract with a Third Party Administrator on March 25, 2025. The remaining claims are in the process of being assessed by the contractor while a competitive process can be completed. The contractor will ensure timely processing and has the expertise to ensure that the City pays costs that are fairly and accurately assessed per its contractual obligations for Inside Safe participating properties. For FY 2025-26, damage claims related to the Inside Safe motel interim housing portfolio are estimated to total \$2.75 million, which is based on approximately 5 percent of the portfolio leasing costs.

### **LAHSA Service Provider Contracts**

The Inside Safe initiative relies upon the work of the Los Angeles Homeless Services Authority (LAHSA) and service providers in conducting assessments, providing services which include case management services, housing navigation, street engagement, food programming, and resident monitors in nightly motels and the Mayfair. Budgets for these services are based on a daily bed rate of up to \$110 per person. This was adopted when a procurement for Inside Safe was released in the fall of 2023. Through this process, 14 qualified service providers were identified to perform services as outlined in the Scope of Required Services (SRS).

The Inside Safe Interim Housing Portfolio also includes congregate beds at two sites located within Council District 14. One site is a sprung structure shelter at 545 S. San Pedro Street with 53 beds, which opened in April 2025 and whose contract extends through June 2026. The other site is a 58-bed program at a Weingart facility, which this report requests contract authority be increased to \$4,070,440 and to extend through June 2026.

For Fiscal Year 2025-26, the estimated costs for all service providers (including the Mayfair and congregate sites) is \$77 million, which is inclusive of LAHSA administrative costs. From July 1, 2025, through September 30, 2025, a total of \$13,947,391 was expended from the HEA for service provider costs, which includes \$8,979,548 in FY 2025-26 Quarter 1 and Quarter 2 advances, \$4,907,846 in FY 2024-25 costs, and \$59,997 in FY 2022-23 LAHSA administrative costs.

Inside Safe Service Provider and LAHSA administration costs for the first half of FY

2025-26 are estimated at \$34.76 million. In consideration of other liabilities, funding for the estimated outstanding service provider balance of \$25.78 million requires a transfer from the Inside Safe Reserve Fund to the Homelessness Emergency Account. For additional anticipated expenditures from the HEA, a request from the Unappropriated Balance will be included in a future report.

For FY 2025-26 motel interim housing portfolio service provider costs, an initial up-to contract amount of \$30,112,500 was approved via an amending motion to the Twenty-Sixth HEA Status Report (C.F. 22-1545-S29). This initial authorization was calculated to support LAHSA Service Provider costs for the first half of the fiscal year based on a 1,500-slot budget. To ensure uninterrupted service provision across the motel interim housing portfolio through the end of the fiscal year, this report requests authority to amend the FY 2025-26 contract with LAHSA to increase the total up to expenditure authority for these services to \$55,768,350.

### **LAHSA Permanent Stay**

Beginning in Fiscal Year 2023-24, LAHSA was contracted to administer two programs as part of the Inside Safe initiative's goal of creating pathways to permanent housing. These include time-limited subsidies (TLS), which provide short-term rental assistance, and housing navigation, a service focused on helping participants find and secure permanent housing. These initiatives are separate from the interim housing services and are specifically designed to help participants secure long-term supportive housing. Per the Mayor's Office, an allocation for permanent stay costs (i.e. TLS or housing navigation) is not included in the FY 2025-26 Inside Safe budget.

From July 1, 2025, through September 30, 2025, a total of \$644,112 was expended from the HEA for FY 2024-25 TLS costs.

### **LA Grand & Mayfair Interim Housing**

The LA Grand Hotel provided interim housing under a lease agreement from February 1, 2023, until final demobilization on July 18, 2024. LA Grand participants transitioned to the Mayfair starting in May 2024 and culminating in June 2024. Information on the LA Grand's leasing and demobilization is included in the Twenty-Ninth HEA report (C.F. 22-1545-S32).

On August 18, 2023, Council approved the acquisition and rehabilitation of the Mayfair Hotel for use as interim housing for Inside Safe. The site, which opened and started accepting clients on May 1, 2024, has 294 rooms with a three-level 183 parking space garage and is located in Council District 1. It was previously used as a part of Project RoomKey (PRK). The Housing Authority of the City of Los Angeles (HACLA) manages

operations under an Asset Management agreement, while LAHSA contracts with Weingart to provide services for Inside Safe Participants. According to Weingart, as of September 30, 2025, Mayfair was at approximately 78 percent occupancy with 230 rooms and 242 participants. Information on the acquisition and associated costs is included in the Twenty-First HEA Status Report (C.F. 22-1545-S24).

As outlined in a Municipal Facilities Committee Report (C.F. 23-0792-S2), the rehabilitation of the Mayfair Hotel is a multi-phase project. Phase 1, which included the renovation of 294 rooms and service areas, was completed prior to initial resident move-in. The project has now advanced to Phase 2, which will focus on major structural and systems upgrades, including seismic strengthening, elevator modernization, and façade and roof repairs, with an estimated completion time of 12 to 18 months.

While a new comprehensive project timeline is being developed, preliminary work on Phase 2 has commenced. The Bureau of Engineering (BOE) began the pre-design stage for seismic retrofitting in January 2025. Concurrently, HACLA has initiated the elevator modernization, for which funding will be requested via a Capital and Technology Improvement Expenditure Plan (CTIEP). HACLA is also proceeding with funded roofing repairs and is currently reviewing contractor bids. Further updates on the renovation progress will be provided in a future report. Distinct from these capital improvement costs, funding for routine day-to-day damages is allocated through the annual Operations and Maintenance fees in the HACLA budget. Updates on current year operating expenses will be provided in future reports.

### **Project HomeKey-3 Match**

On June 30, 2023, the City Council and Mayor approved the CAO report relative to the recommendations related to the State of California Department of Housing and Community Development HomeKey Program, Round 3 Report (C.F. 21-0112-S3), which authorized the City to obligate City match and funding for three housing sites to be used as interim housing. Within this report, it is previously noted that an up to amount of \$31.5 million of match funding would be used, subject to the approval of the Mayor's Office. A transfer of \$20.4 million was authorized to the Los Angeles Housing Department (LAHD), as approved by the Mayor's Office, for capital costs associated with the Cheviot Hills - Shelby project. This project is expected to provide 78 interim housing units. This funding is also leveraged for the Motel 6 - North Hills project, which is expected to provide 111 interim housing units. An up-to amount of \$11.09 million for Cheviot Hills - Shelby operating costs, which were earmarked against last year's HEA funding, is expected to be transferred at a later date to be determined by the Mayor's Office. The site is anticipated to open in March 2026. For FY 2025-26, \$846,924 in funding is budgeted for Shelby operational costs.



## **City Department Costs**

LAPD provides essential support by ensuring the safety of City staff and program participants. The department's overtime costs for these operations are reimbursed from the Homelessness Emergency Account (HEA). As of this report, two invoices for the May-July 2025 service periods, totaling approximately \$11,000, are pending payment. There have been zero arrests during the initial phase of operations.

As a part of the FY 2025-26 budget discussions, LADOT costs for transportation relocation services were identified to be reimbursed by the HEA. Estimates are pending.

Fiscal administration of the Inside Safe program is managed by the Office of the City Administrative Officer (CAO). The CAO's duties include processing vendor invoices (see section: Inside Safe Motel/Hotel Invoicing and Contracting), monitoring the HEA's balance and commitments, tracking expenditures, and providing monthly financial reports. This work is supported by an estimated 6.5 full-time equivalent (FTE) positions, funded primarily by the Homeless Housing, Assistance and Prevention (HHAP) Grant with supplemental support from the General Fund.

In August 2025, a transfer of \$794,991 was approved to fund construction costs for the Council District 9 RV Storage Lot. Of this amount, \$493,188 was appropriated to the Department of General Services, \$155,820 to the Bureau of Engineering, and \$145,983 to the Information Technology Agency. These costs were previously reported as operational expenses but have been reclassified as departmental expenditures as they are related to development of the site.

## **RV Storage Lot**

To support Inside Safe operations, the City is developing secure storage lots for recreational vehicles (RV's), which will function similarly to an Official Police Garage. The first facility, a Metro-owned lot in Council District 9, became fully operational on February 25, 2025. This site operates under a three-year agreement with Metro. The second year fee for site utilization is expected to remain level at \$150,000.

A second Metro-owned lot in Council District 6 was identified as the next site for RV storage. Development was contingent upon the approval of a CEQA exemption prepared by BOE, which was approved by Council and Mayor on August 15, 2025 (C.F. 22-1545-S31). The lease agreement is pending execution and construction is anticipated to commence later this calendar year. The projected cost for the first year of the agreement is \$350,000.

## **Inside Safe - Program, Encampment Resolution, and Metrics**

The Inside Safe Initiative emphasizes a “housing first” approach, transitioning people experiencing homelessness directly into beds provided by local motels or City owned properties. The program also begins with encampment resolutions as identified by Council Offices and assessed by the Mayor’s Office Field Intervention Team (FIT). The FIT team also provides community engagement through virtual town hall-style meetings, connects individuals with service providers, and after an operation, monitors the original location for repopulation and engages with Inside Safe participants.

The Los Angeles Homeless Services Authority (LAHSA) maintains a data module within the Homelessness Management Information System (HMIS) to track key metrics for Inside Safe. Attachment 3 includes summaries of Inside Safe outcomes and breakdowns by race and ethnicity prepared by LAHSA, as well as additional breakdowns of the participant status by Council Districts and other pertinent metrics. Since the beginning of the program, a total of 112 Inside Safe encampment operations have been completed. This report includes data from four new encampment operations and three response efforts that occurred in September 2025.

Per Attachment 3, LAHSA’s HMIS dashboard reports a total of 5,179 individuals voluntarily accepted to move into interim housing and were connected to services, of which 1,243 Inside Safe participants moved into permanent housing since the beginning of the program through September 30, 2025. This reflects an increase of 137 and 45, respectively, since the last report. This data includes all occupants residing at the Mayfair and operations that have been carried out to address repopulation of encampments. The current housing retention rate of the program is estimated to be 57 percent. These numbers may change as LAHSA continues to work on further reconciling service provider data with HMIS entries to resolve duplicate placements and other discrepancies as well as refining the Inside Safe data module.

Attachment 3 also includes a matrix that summarizes information associated with specific operations, including the number of operations, where they were located, the number of participants placed, and where participants exited to.

## **Joint City-County Inside Safe Reimbursements**

The City and County of Los Angeles executed an agreement (Contract #AO-23-603) to reimburse the City's Inside Safe program for operations that serve residents from encampments on County land. Initially established in June 2023, the current agreement is for reimbursement up to \$6,160,400 joint City-County Inside Safe operations. Reimbursements are deposited into the Inside Safe Reserve Fund. Unless renewed, the agreement is scheduled to terminate on January 9, 2026.

The City has submitted invoices to the County for a total reimbursement of \$3,005,084. To date, the City has received reimbursement for all invoices. A total of \$1,860,000 was appropriated to the Inside Safe Reserve Fund account for FY 2024-25. The remaining amount of \$1,145,084 has been appropriated into the FY 2025-26 Inside Safe Reserve Fund account.

## **FISCAL IMPACT STATEMENT**

Approval of the recommendations in this report will not have an immediate impact on the General Fund given that the recommendations use budgeted General Funds.

## **FINANCIAL POLICIES STATEMENT**

The recommendations in this report comply with the City Financial Policies.

### **Attachments:**

1. Homeless Emergency Account Overview
2. Inside Safe Budget Summaries by Fiscal Year
3. Inside Safe Program Metrics
4. Leasing and Service Costs for Active/Executed Occupancy Agreements Through June 2027

**Table 1. FY 2025-26 Funding Authority**

Transfer Description	Completed In	Homelessness Emergency Account	Inside Safe Reserve Account	Unappropriated Balance	Total
Budget	July 01, 2025	\$36,179,658	\$0	\$36,179,658	\$72,405,155
FY 2024-25 Reappropriation (est.) (October 2025)	TBD	\$15,735,094	\$42,116,477	\$0	\$57,851,571
<b>Balances</b>		<b>\$51,914,752</b>	<b>\$42,116,477</b>	<b>\$36,179,658</b>	<b>\$130,256,726</b>

**Table 2: BFY 2025-26 HEA Account - Expenditures from July 1, 2025 to September 30, 2025**

Budget Category	Description	FY 2023	FY 2024	FY 2025	FY 2026	Total
<b>Interim Housing</b>	Motel Nightly Rentals	\$0	\$0	\$3,116,211	\$1,687,073	\$4,803,284
	Motel Facility Damages	\$0	\$14,280	\$18,409	\$0	\$32,689
	Operating Expense: Mayfair	\$0	\$0	\$88,950	\$0	\$88,950
<b>Service Provider Support Services</b>	LAHSA Motel Service Provider Costs	\$59,997	\$0	\$4,890,155	\$8,979,548	\$13,929,700
	CD14 Congregate (Weingart)	\$0	\$0	\$17,691	\$0	\$17,691
<b>Permanent Stay</b>	TLS	\$0	\$0	\$644,112	\$0	\$644,112
<b>Departmental</b>	LAPD	\$0	\$0	\$0	\$0	\$0
	Bureau of Engineering	\$0	\$0	\$0	\$155,820	\$155,820
	General Services	\$0	\$0	\$0	\$493,188	\$493,188
	Information Technology Agency	\$0	\$0	\$0	\$145,983	\$145,983
<b>Total</b>		<b>\$59,997</b>	<b>\$14,280</b>	<b>\$8,775,528</b>	<b>\$11,461,612</b>	<b>\$20,311,416</b>

# Attachment 2: Inside Safe Budget Summaries by Fiscal Year

13

Table 1. Prior Year Expenditure Summary <sup>2</sup>

		FY2022-23 <sup>1</sup>				FY2023-24				FY2024-25				Total PY		
Budget Category	Description	Budget <sup>1</sup>	Expenses Paid	Expenses Pending	Total Expenses	Budget	Expenses Paid	Expenses Pending	Total Expenses	Budget	Expenses Paid	Expenses Pending	Total Expenses	Expenses Paid	Expenses Pending	Total Expense
<b>Interim Housing</b>																
Leasing: Motel Nightly Rentals	Booking Agreements	\$0	\$6,483,410	\$0	\$6,483,410	\$92,000,000	\$25,222,510	\$0	\$25,222,510	\$57,646,982	\$24,731,684	\$1,561,963	\$26,293,647	\$56,437,605	\$1,561,963	\$57,999,567
Leasing: Motel Nightly Rentals	Occupancy Agreements	\$0	\$0	\$0	\$0		\$13,122,874	\$0	\$13,122,874		\$24,244,524	\$1,494,163	\$25,738,686	\$37,367,398	\$1,494,163	\$38,861,561
Leasing	LA Grand	\$0	\$8,749,681	\$0	\$8,749,681		\$23,422,369	\$0	\$23,422,369		\$0	\$0	\$0	\$32,172,050	\$0	\$32,172,050
Operating Expenses		\$0	\$27,958	\$3,245	\$31,203	\$18,000,000	\$255,571	\$108,904	\$364,475	\$10,683,000	\$1,960,838	\$147,108	\$2,107,946	\$2,244,367	\$259,256	\$2,503,623
Payment Enablement Services		\$0	\$0	\$0	\$0	\$0	\$0	\$0	\$0	\$650,000	\$0	\$0	\$0	\$0	\$0	\$0
	<i>subtotal</i>	\$0	\$15,261,049	\$3,245	\$15,264,294	\$110,000,000	\$62,023,325	\$108,904	\$62,132,228	\$68,979,982	\$50,937,046	\$0	\$54,140,279	\$128,221,419	\$3,315,382	\$131,536,801
<b>Service Provider Support Services</b>																
LAHSA Service Provider(s)	All	\$0	\$10,829,296	\$0	\$10,829,296	\$62,000,000	\$50,553,070	\$0	\$50,553,070	\$86,098,275	\$63,495,857	\$2,105,468	\$65,601,325	\$124,878,223	\$2,105,468	\$126,983,691
HACLA Asset Management	Mayfair	\$0	\$0	\$0	\$0	\$0	\$5,067,000	\$0	\$5,067,000	\$0	\$0	\$0	\$0	\$5,067,000	\$0	\$5,067,000
	<i>subtotal</i>	\$0	\$10,829,296	\$0	\$10,829,296	\$62,000,000	\$55,620,070	\$0	\$55,620,070	\$86,098,275	\$63,495,857	\$2,105,468	\$65,601,325	\$129,945,223	\$2,105,468	\$132,050,691
<b>City Departments</b>																
LADOT		\$0	\$54,922	\$0	\$54,922	\$0	\$0	\$0	\$0	\$0	\$0	\$0	\$0	\$54,922	\$0	\$54,922
Personnel		\$0	\$976,591	\$0	\$976,591	\$0	\$0	\$0	\$0	\$0	\$0	\$0	\$0	\$976,591	\$0	\$976,591
LAPD		\$0	\$147,590	\$0	\$147,590	\$0	\$335,387	\$0	\$335,387	\$90,000	\$47,528	\$4,770	\$52,298	\$530,505	\$4,770	\$535,275
City Clerk		\$0	\$27,169	\$0	\$27,169	\$0	\$0	\$0	\$0	\$0	\$0	\$0	\$0	\$27,169	\$0	\$27,169
Mayor's Office		\$0	\$0	\$0	\$0	\$0	\$7,200,000	\$0	\$7,200,000	\$4,338,770	\$3,500,000	\$0	\$3,500,000	\$10,700,000	\$0	\$10,700,000
Bureau of Engineering		\$0	\$0	\$0	\$0	\$0	\$0	\$0	\$0	\$4,500,000	\$4,500,000	\$0	\$4,500,000	\$4,500,000	\$0	\$4,500,000
	<i>subtotal</i>	\$0	\$1,206,272	\$0	\$1,206,272	\$0	\$7,535,387	\$0	\$7,535,387	\$8,928,770	\$8,047,528	\$4,770	\$8,052,298	\$16,789,187	\$4,770	\$16,793,957
<b>Permanent Stay</b>																
Move-In Support	Housing Navigation	\$0	\$0	\$0	\$0	\$13,000,000	\$0	\$0	\$0	\$0	\$350,961	\$0	\$350,961	\$350,961	\$0	\$350,961
Rental Assistance	Time Limited Subsidies (TLS)	\$0	\$0	\$0	\$0	\$18,000,000	\$0	\$0	\$0	\$8,328,478	\$787,904	\$33,461	\$821,365	\$787,904	\$33,461	\$821,365
	<i>subtotal</i>					\$31,000,000	\$0	\$0	\$0	\$8,328,478	\$1,138,865	\$33,461	\$1,172,326	\$1,138,865	\$33,461	\$1,172,326
<b>Acquisition</b>																
Motel Acquisition	Mayfair	\$0	\$0	\$0	\$0	\$47,000,000	\$21,426,570	\$0	\$21,426,570	\$10,936,010	\$0	\$0	\$0	\$21,426,570	\$0	\$21,426,570
Motel Acquisition	Shelby	\$0	\$0	\$0	\$0		\$20,471,800	\$0	\$20,471,800		\$0	\$0	\$0	\$20,471,800	\$0	\$20,471,800
	<i>subtotal</i>	\$0	\$0	\$0	\$0	\$47,000,000	\$41,898,370	\$0	\$41,898,370	\$10,936,010	\$0	\$0	\$0	\$41,898,370	\$0	\$41,898,370
<b>Grand Totals</b>		\$0	\$27,296,617	\$3,245	\$27,299,862	\$250,000,000	\$167,077,152	\$108,904	\$167,186,056	\$183,271,515	\$123,619,296	\$5,346,932	\$128,966,228	\$317,993,065	\$5,459,081	\$323,452,146

<sup>1</sup> For FY23, a budget was not established for Inside Safe costs.

<sup>2</sup> This table summarizes expenditures incurred in prior fiscal years. Any prior-year costs paid for using FY26 funds are accounted for in Attachment 2, Tables 1 and 2.

Table 2. FY 2025 - 26: Budget Breakdown			
Budget Category		Authority	Budget
<b>FY 2025-26 Funding Authority</b>			
Homelessness Emergency Account <sup>1</sup>		FY 2025-26	\$36,179,658
Unappropriated Balance <sup>1</sup>		FY 2025-26	\$36,179,658
FY 2023-24 PY Encumbrance for Motel Nightly Rentals		FY 2025-26	\$4,708,495
FY 2024-25 Rollover: Homelessness Emergency Account		FY 2025-26	\$15,735,094
FY 2024-25 Rollover: Inside Safe Reserve		FY 2025-26	\$43,261,562
<i>subtotal</i>			<b>\$136,064,466</b>
<b>FY 2025-26 Funding Adjustments</b>			
Prior Year Expenses	Various	Various FY	-\$11,602,021
<i>subtotal</i>			<b>-\$11,602,021</b>
<b>FY 2025-26 Budget Grand Total</b>			<b>\$124,462,445</b>

FY 2025-26: Current Year Costs						
Budget Category	Comment / Description	Service Period	Projections <sup>3</sup>	Expenses Paid	Expenses Pending	Total Expenses
<b>Interim Housing</b>						
Motel Nightly Rentals	Booking Agreements	FY 2025-26	\$25,000,000	\$730,915	\$2,474,661	\$3,414,604
	Booking Agreements: PY Encumbrance	FY 2025-26		\$209,028		\$3,928,698
	Occupancy Agreements	FY 2025-26	\$25,291,505	\$956,158	\$2,763,512	\$4,674,145
	Occupancy Agreements: PY Encumbrance	FY 2025-26	\$4,708,495	\$954,475		\$954,475
Operating Expenses	Motel Facility Damages	FY 2025-26	\$2,750,000	\$0	\$0	\$0
	RV Storage Lot - CD 6	FY 2025-26	\$350,000	\$0	\$350,000	\$350,000
	RV Storage Lot - CD 9	FY 2025-26	\$150,000	\$0	\$150,000	\$150,000
<i>subtotal</i>			<b>\$58,250,000</b>	<b>\$2,850,576</b>	<b>\$5,738,173</b>	<b>\$13,471,922</b>
<b>Service Provider Support Services</b>						
LAHSA Service Provider	LAHSA Admin <sup>5</sup>	FY 2025-26	\$5,805,690	\$0	\$0	\$0

FY 2025-26: Current Year Costs						
Budget Category	Comment / Description	Service Period	Projections <sup>3</sup>	Expenses Paid	Expenses Pending	Total Expenses
LAHSA Service Provider	IH Motel Portfolio (1389 Slots)	FY 2025-26	\$55,768,350	\$8,979,548	\$0	\$8,979,548
CD 14 Congregate	Weingart (58 Beds)	FY 2025-26	\$2,328,700	\$0	\$0	\$0
CD 14 Congregate	Union Rescue Mission (53 Beds)	FY 2025-26	\$2,127,950	\$0	\$0	\$0
Mayfair	Weingart	July 01, 2025 to April 30, 2026	\$9,831,360	\$0	\$0	\$0
Motel Acquisition	Shelby	FY 2025-26	\$846,924	0.00	\$0	\$0
<i>subtotal</i>			<b>\$76,708,974</b>	<b>\$8,979,548</b>	<b>\$0</b>	<b>\$8,979,548</b>
City Departments						
Bureau of Engineering	RV Storage Lot - CD 6	FY 2025-26	\$155,820	\$155,820	\$0	\$155,820
General Services	RV Storage Lot - CD 6	FY 2025-26	\$493,188	\$493,188	\$0	\$493,188
Information Technology Agency	RV Storage Lot - CD 6	FY 2025-26	\$145,983	\$145,983	\$0	\$145,983
Transportation	Inside Safe Response Bus Services	FY 2025-26	\$40,000	\$0	\$0	\$0
Los Angeles Police Department	Support/Safety	FY 2025-26	\$50,000	\$0	\$6,173	\$6,173
<i>subtotal</i>			<b>\$884,991</b>	<b>\$794,991</b>	<b>\$6,173</b>	<b>\$801,164</b>
<b>Current Year Subtotal</b>			<b>\$135,843,964</b>	<b>\$12,625,115</b>	<b>\$5,744,346</b>	<b>\$23,252,634</b>
<b>FY 2025-26</b>			<b>-\$11,381,519</b>			

<sup>1</sup> Funding for the Inside Safe program's Homelessness Emergency Account and Unappropriated Balance is provided by 50% of the revenue from the County-Alliance Memorandum of Understanding (\$17,580,905) and the State Encampment Resolution Grant (\$11,250,000). The total expected revenue from these sources is \$57,661,810, comprising \$35,161,810 from the County-Alliance Memorandum of Understanding and \$22,500,000 from the State Encampment Resolution Grant. Of the budgeted amount, \$14,697,506 is attributable to an appropriation from the General City Purposes (GCP) account.

<sup>2</sup> Details of how the Encampment Resolution Fund is to be utilized are to be determined.

<sup>3</sup> Subject to change based on line item allocations.

<sup>4</sup> Prior-year (FY25) costs were paid from current appropriations due to incorrect service periods, which prevented their use. Unexpended FY25 encumbrances will be recommended for reprogramming to the current fiscal year in a future report.

<sup>5</sup> This is based off the contract authority authorized by City Council (C.F. 22-1545-S29).

## Inside Safe

### Los Angeles Homeless Services Authority Report

Data through September 30 2025. Published November 19 2025. Please disregard all previous reports.

# 112

Encampment Operations

# 5,179

Entered Interim Housing

# 57%

Housing Retention

## Current Status of Clients Who Entered Interim Housing

\*Due to ongoing data quality work, please note that for this report current statuses reflect the client statuses as of the update date and not the report end date.

# 1,243

Currently  
Permanently Housed

Permanent Supportive Housing	468 (37.65%)
Exited to Subsidized Housing	374 (30.09%)
Time Limited Subsidy	313 (25.18%)
Exited to Unsubsidized Housing	50 (4.02%)
Reunified	38 (3.06%)

# 1,636

Currently in Interim  
Housing

Motel	1,205 (73.7%)
Mayfair Hotel	231 (14.1%)
Other IH	146 (8.9%)
Inside Safe San Pedro	36 (2.2%)
Tiny Home	14 (0.9%)
ABH	4 (0.2%)

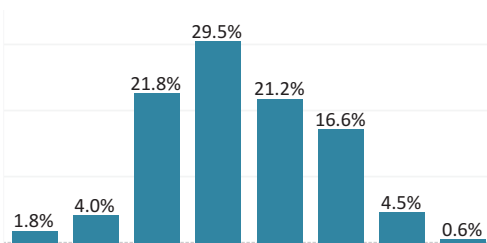
# 2,300

Program Exits

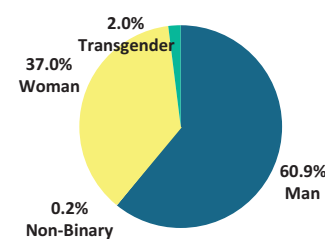
Returned to Homelessness	1,465 (28.3%)
Returned to Homelessness - Working with Providers	583 (11.3%)
Medical or Psychiatric Facility	28 (0.5%)
Incarcerated	116 (2.2%)
Substance Abuse Facility	11 (0.2%)
Deceased	97 (1.9%)

## Demographics

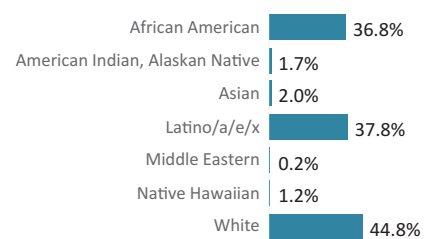
### Age



### Gender



### Race & Ethnicity



**Individuals included in report:** Includes clients who were engaged on the day of the encampment resolution and in repopulations efforts. Inside Safe also includes clients who were living in other ad hoc encampments throughout the city since January 2023 and clients that were living in the LA Grand on Feb 1, 2023, when transition from a PRK site. It also include clients in the ERF LA Grand Program. The nonspecific encampment-based clients comprise 1151 individuals.

**Housing Retention:** The percentage is calculated by dividing the sum of people who are Currently Permanently Housed and Currently in Interim Housing by the number of people who entered Interim Housing. This figure excludes clients that have passed away as they did not voluntarily exit the programs.

**Returned to Homelessness- Working with Providers:** This includes clients who have left interim or permanent housing, but who are currently still engaging with outreach and housing programs.

**Returned to Homelessness:** Clients who have left the program and are not active in any other homeless services program in HMIS.

#### Data Quality:

The report includes only data that providers have entered into HMIS. Providers have up to 72 hours after an interaction with, or a change in status of, a client to make a record in HMIS. Due to the dynamic nature of the program and its participants, this process may take longer than 72 hours. There may also be additional activities that have yet to be captured in HMIS. LAHSA and service providers strive for complete, accurate, and timely data in HMIS. The Data Management team at LAHSA is actively collaborating with providers to resolve any data discrepancies.

**Entered Interim Housing:** Includes only clients who entered interim housing. This cohort is the basis for all reporting.

**Percentage Permanently Housed:** Calculated from all clients who entered interim housing who have not exited from program.

**Duplicative Clients:** As a note there have been 284 clients who have been involved in more than one resolution. They are deduplicated in the total count.

**Demographics:** Blanks in demographics (race, age, gender, etc.) are not calculated in these data sets (and the main topline), and people who self-report multiple races/ethnicities are double-counted in the race categories, but the grand totals are deduplicated numbers.



## Inside Safe Latino/a/e/x

### Los Angeles Homeless Services Authority Report

Data through September 30 2025. Published November 19, 2025. Please disregard all previous reports.

**108**

Encampment Operations

**1,906**

Entered Interim Housing

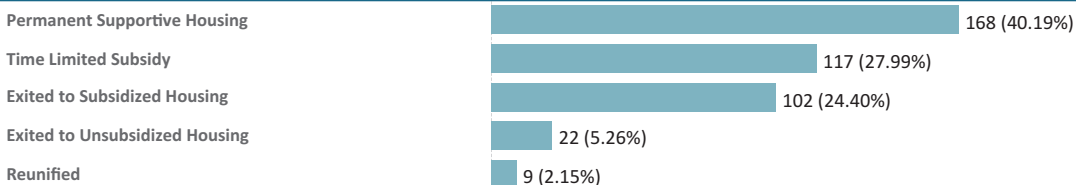
**59%**

Housing Retention

### Current Status of Clients Who Entered Interim Housing

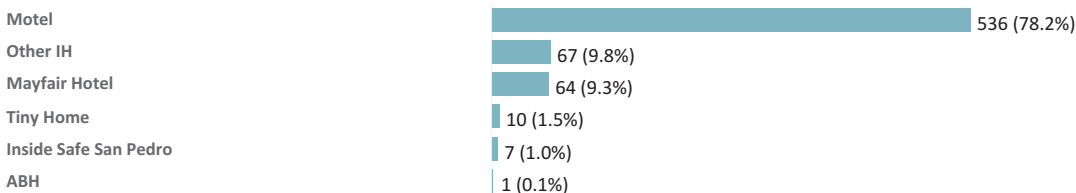
**418**

Currently  
Permanently Housed



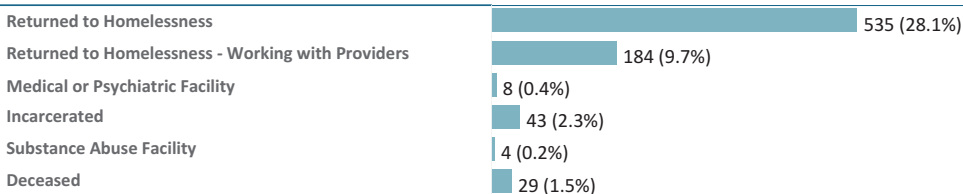
**685**

Currently in Interim  
Housing



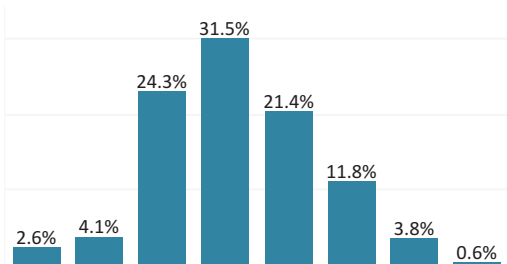
**803**

Program Exits

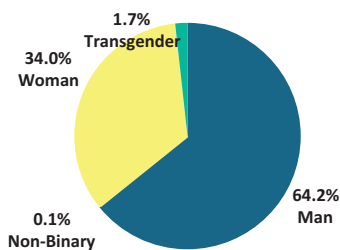


### Demographics

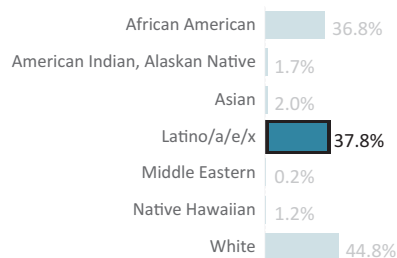
#### Age



#### Gender



#### Race & Ethnicity



**Individuals included in report:** Includes clients who were engaged on the day of the encampment resolution and in repopulations efforts. Inside Safe also includes clients who were living in other ad hoc encampments throughout the city since January 2023 and clients that were living in the LA Grand on Feb 1, 2023, when transition from a PRK site. It also include clients in the ERF LA Grand Program. The nonspecific encampment-based clients comprise 695 individuals.

**Housing Retention:** The percentage is calculated by dividing the sum of people who are Currently Permanently Housed and Currently in Interim Housing by the number of people who entered Interim Housing. This figure excludes clients that have passed away as they did not voluntarily exit the programs.

**Returned to Homelessness- Working with Providers:** This includes clients who have left interim or permanent housing, but who are currently still engaging with outreach and housing programs.

**Returned to Homelessness:** Clients who have left the program and are not active in any other homeless services program in HMIS.

#### Data Quality:

The report includes only data that providers have entered into HMIS. Providers have up to 72 hours after an interaction with, or a change in status of, a client to make a record in HMIS. Due to the dynamic nature of the program and its participants, this process may take longer than 72 hours. There may also be additional activities that have yet to be captured in HMIS. LAHSA and service providers strive for complete, accurate, and timely data in HMIS. The Data Management team at LAHSA is actively collaborating with providers to resolve any data discrepancies.

**Entered Interim Housing:** Includes only clients who entered interim housing. This cohort is the basis for all reporting.

**Percentage Permanently Housed:** Calculated from all clients who entered interim housing who have not exited from program.

**Duplicative Clients:** As a note there have been clients who have been involved in more than one resolution. They are deduplicated in the total count. ..

## Inside Safe Race & Ethnicity Report

### Los Angeles Homeless Services Authority Report

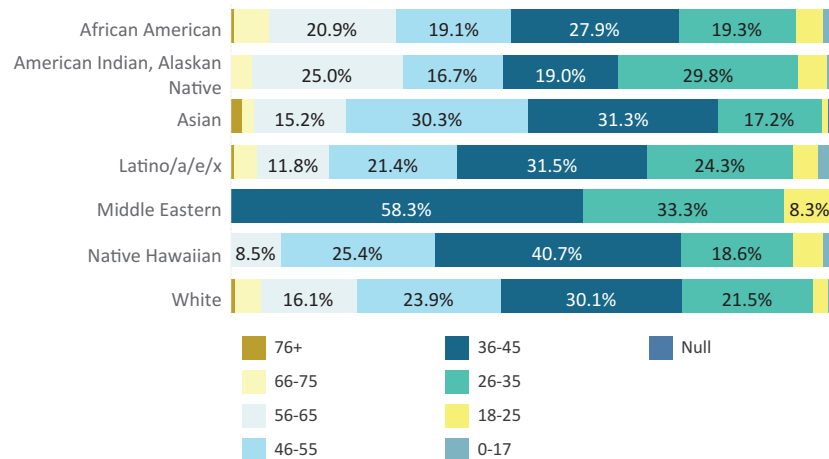
Data through September 30 2025. PI ubidheNv o1ember 9, 505. PI ieade NdegarNaii pre1soud reportdP

#### Current Status of Clients Who Entered Interim Housing

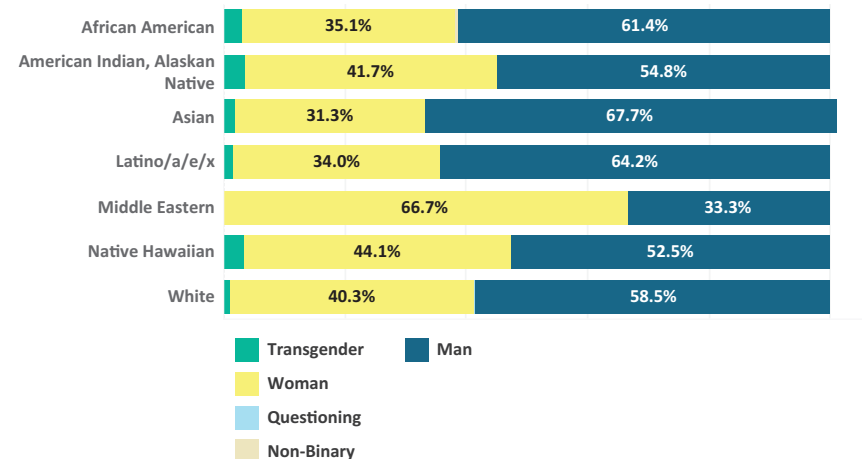
	Permanent Housing	Interim Housing	Returned to Homelessness	Returned to Homelessness - Working with Providers	Substance Abuse Facility	Incarcerated	Deceased	Medical or Psychiatric Facility
African American	495 (26.6%)	533 (28.7%)	502 (27.0%)	230 (12.4%)	4 (0.2%)	44 (2.4%)	38 (2.0%)	12 (0.6%)
American Indian, Alaskan Native	23 (27.4%)	26 (31.0%)	26 (31.0%)	7 (8.3%)			2 (2.4%)	
Asian	29 (29.3%)	33 (33.3%)	24 (24.2%)	8 (8.1%)	1 (1.0%)	1 (1.0%)	3 (3.0%)	
Latino/a/e/x	418 (21.9%)	685 (35.9%)	535 (28.1%)	184 (9.7%)	4 (0.2%)	43 (2.3%)	29 (1.5%)	8 (0.4%)
Middle Eastern		5 (41.7%)	4 (33.3%)	2 (16.7%)		1 (8.3%)		
Native Hawaiian	16 (27.1%)	17 (28.8%)	14 (23.7%)	10 (16.9%)		1 (1.7%)	1 (1.7%)	
White	563 (24.9%)	659 (29.2%)	657 (29.1%)	276 (12.2%)	5 (0.2%)	41 (1.8%)	45 (2.0%)	11 (0.5%)
Grand Total	1,220 (24.2%)	1,597 (31.7%)	1,412 (28.0%)	572 (11.3%)	11 (0.2%)	110 (2.2%)	94 (1.9%)	27 (0.5%)

#### Demographics

##### Age



##### Gender



**Demographics:** Blanks in demographics (race, age, gender, etc.) are not calculated in these data sets (and the main topline), and people who self-report multiple races/ethnicities are double-counted in the race categories, but the grand totals are duplicated numbers.

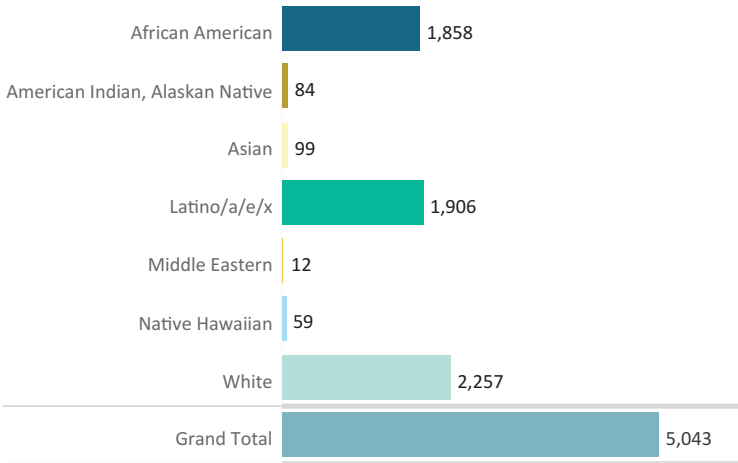
# Inside Safe Race & Ethnicity Report

## Los Angeles Homeless Services Authority Report

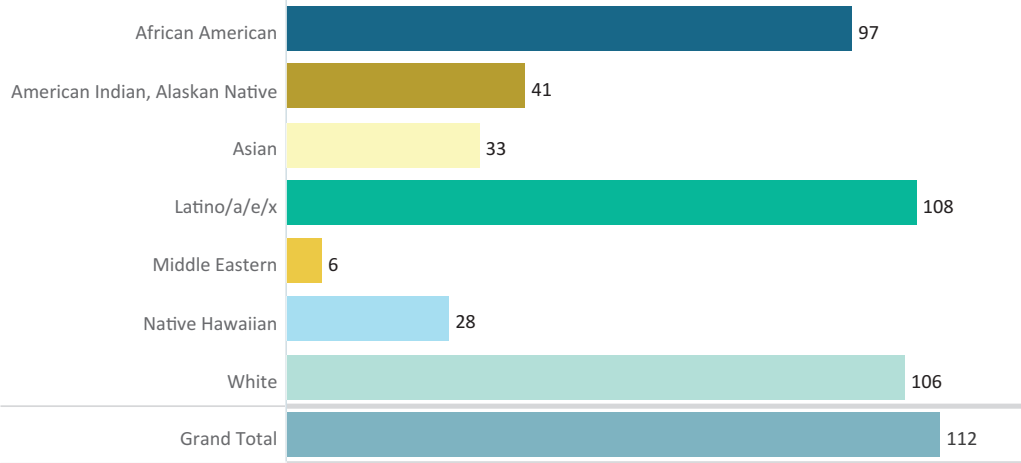
Data through September 30 2025. PI ubisheNv o1ember 9, 505. PI leade NstregarNaii pre1soud reportdP

### Total Served & Encampments

#### Total Served

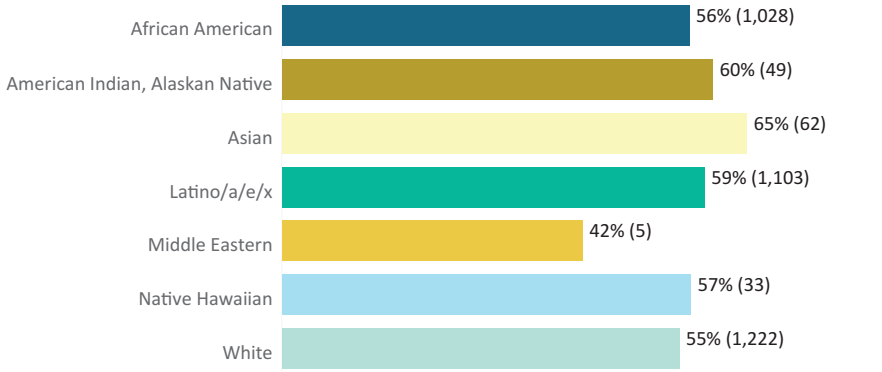


#### Encampments by Race & Ethnicity

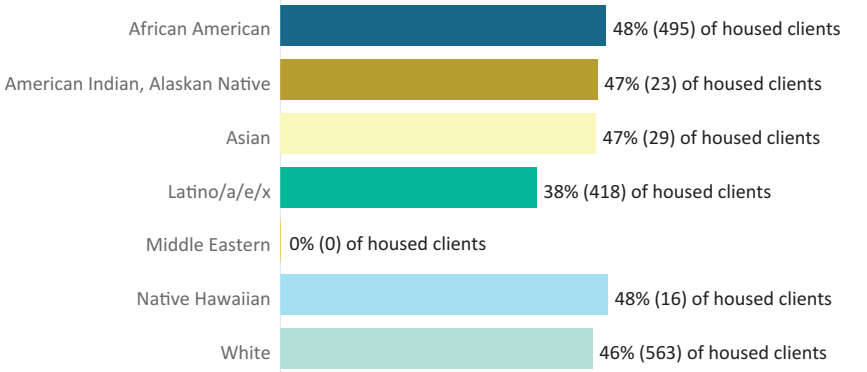


### Housing Retention & Permanently Housed

#### Housing Retention



#### Permanently Housed



Demographics: Blanks in demographics (race, age, gender, etc.) are not calculated in these data sets (and the main topline), and people who self-report multiple races/ethnicities are double-counted in the race categories, but the grand totals are deduplicated numbers.

## Attachment 3: Inside Safe Program Metrics

20

Table 1. Inside Safe Participant Breakdown by Council District as of September 30, 2025 <sup>1</sup>

CD	Mayfair Hotel	Weingart Towers	Motels	ABH	THV	Other Interim Housing	Permanent Placements	Other Exits, Dispositions, or in Data Reconciliation	Grand Total
1	2	12	114	1	1	15	26	203	374
1,10,13	-	-	42	-	-	5	49	74	170
1,14	-	5	15	-	-	-	6	44	70
1,8	-	-	13	-	-	1	1	12	27
10	-	1	49	1	-	8	36	66	161
11	-	-	19	-	-	2	72	97	190
12	-	-	24	-	1	4	38	47	114
13	1	-	120	-	-	20	97	239	477
14	25	10	74	-	-	18	121	251	499
15	-	-	64	-	-	2	84	111	261
2	-	-	13	-	2	2	22	41	80
3	-	-	91	1	5	2	54	120	273
4	-	-	67	-	-	5	35	59	166
4,13	-	-	35	-	-	3	4	18	60
5	-	2	18	-	-	2	32	44	98
5,11	1	-	22	-	-	5	15	47	90
5,13	-	-	12	-	-	1	22	22	57
6	-	-	32	-	2	4	26	53	117
6,12	-	-	10	-	-	-	-	5	15
6,7	-	-	14	-	-	-	1	11	26
7	-	-	40	-	-	4	33	79	156
8	-	-	142	-	1	8	78	129	358
8,15	-	-	23	-	-	-	1	10	34
9	-	5	136	-	-	8	120	174	443
N/A	237	4	97	1	2	38	307	484	1,170
Grand Total	266	39	1286	4	14	157	1280	2440	5,486

<sup>1</sup> Table includes duplicative participants.

Table 2. Inside Safe Encampment Operations by Council District as of September 30, 2025

Council District	Encampment Operations	Repopulation Operations	Grand Total
1	9	14	23
1,10,13	1	7	8
1,14	2	6	8
1,8	1	-	1
10	4	16	20
11	5	4	9
12	3	3	6
13	17	14	31
14	8	15	23
15	5	14	19
2	3	10	13
3	6	23	29
4	4	9	13
4,13	1	6	7
5	5	2	7
5,11	2	1	3
5,13	1	5	6
6	5	4	9
6,12	1	2	3
6,7	1	1	2
7	4	13	17
8	12	15	27
8,15	1	3	4
9	11	29	40
Various	-	1	1
Grand Total	112	217	329

Table 3. Inside Safe Program Metrics as of September 30, 2025	
Number of Encampment Operations	112
Number of Targeted Inside Safe Efforts <sup>1</sup>	25
Number of Council Districts	15
Number of Initial Placements <sup>2</sup>	5,179
Number of Arrests During Initial Encampment Operations	0
Number of Housing Fairs To Date	17
Pounds of Waste Removed	1,261,227

<sup>1</sup> Includes scattered encampment relief efforts to move PEH into hotel rooms as well as transitioning Augmented Winter Shelter and Project Roomkey transfers into Inside Safe. To date, there have been 21 efforts spanning various council districts and one specific to CD 14.

<sup>2</sup> This amount may change pending further updates from LAHSA.

# Attachment 3: Inside Safe Program Metrics

23

Table 4. Inside Safe Operations by Council District and Placement Status <sup>1</sup>

No.	Type of Operation	Start Date	End Date	Location/Program	Council District	Service Provider for Operation	Council District where Placements Were Made	No. of Placements <sup>2</sup>	Current Status <sup>1</sup>							
									Interim Housing	Deceased	Incarcerated	Medical or Psychiatric Facility	Permanent Housing	Returned to Homelessness	Returned to Homelessness - Working with Providers	Substance Abuse Facility
1	Encampment Operations	12/20/22	12/30/22	101/Cahuenga	4	The People Concern (TPC)	13	30	7	2	0	0	11	8	2	0
2	Encampment Operations	01/03/23	01/13/23	Venice/Sunset/ABH	11	St. Joseph Center (SJC)	1, 8, 9, 10, 11	107	2	5	2	0	43	38	16	1
3	Encampment Operations	01/27/23	01/27/23	Speedway/Ozone	11	SJC	Unincorporated, 11	4	0	0	0	0	1	3	0	0
4	Encampment Operations	01/30/23	01/30/23	87th and Western	8	Homeless Outreach Program Integrated Care System (HOPICS)	8, 9	29	5	3	0	0	6	14	1	0
5	Encampment Operations	01/30/23	02/03/23	Culver Median	11	SJC	8, Unincorporated	51	5	1	0	0	25	18	2	0
6	Targeted Inside Safe Efforts	02/01/23	-	LA Grand Extension (Original PEH from 2/1)	Various	The Salvation Army (TSA) / Weingart	14	110	17	4	1	1	44	31	12	0
7	Encampment Operations	02/07/23	02/07/23	99th and Flower	8	HOPICS	8, 9	39	3	2	2	1	15	12	4	0
8	Encampment Operations	02/13/23	02/15/23	Victory/Vineland	2	LA Family Housing (LAFH)	2	45	5	0	0	0	15	15	10	0
9	Encampment Operations	02/16/23	02/18/23	6th and Fairfax	5	TPC	13, 14	42	2	1	0	0	20	13	6	0
10	Encampment Operations	02/21/23	02/21/23	81st and Fig Alley	8	HOPICS	8	20	3	0	1	0	12	3	1	0
11	Encampment Operations	02/28/23	02/28/23	105/Figueroa/Hoover	15	HOPICS	8	51	3	3	3	0	17	17	8	0
12	Targeted Inside Safe Efforts	03/02/23	-	Popup Winter Shelters	Various	TSA / Weingart	14	78	7	1	1	2	18	42	6	1
13	Targeted Inside Safe Efforts	03/02/23	03/19/23	Aug Winter Shelter	Various	First To Serve (FTS)	8, 9, 14	31	3	0	2	0	10	12	4	0
14	Encampment Operations	03/09/23	03/09/23	CD 3 Riverbed	3	Hope The Mission (HOPE)	3	45	7	2	0	0	13	12	11	0
15	Encampment Operations	03/13/23	03/28/23	Skid Row	14	LAHSA / Department of Mental Health (DMH)	14	208	44	2	3	2	72	60	25	0
16	Encampment Operations	03/14/23	03/16/23	Echo Park	13	People Assisting the Homeless (PATH)	13	66	13	2	0	0	24	19	7	1
17	Targeted Inside Safe Efforts	03/17/23	-	Aug Winter Shelter to LA Grand	Various	TPC	14	57	7	3	0	1	19	21	6	0
18	Targeted Inside Safe Efforts	03/17/23	-	Aug Winter Shelter: County Motel to City Motel	Various	FTS	14	42	1	0	0	0	18	15	8	0
19	Targeted Inside Safe Efforts	03/21/23	03/24/23	Street Medicine Outreach (Metro LA)	14	TSA / Weingart	14	27	6	1	0	1	7	10	2	0
20	Targeted Inside Safe Efforts	03/21/23	03/21/23	CIRCLE Outreach	Various	TSA / Weingart	14	7	2	0	1	0	1	3	0	0
21	Encampment Operations	04/19/23	04/21/23	Arcadia/Spring	14	TPC	14	77	13	2	1	0	20	31	10	0
22	Encampment Operations	04/27/23	04/28/23	Grand/Vernon	9	HOPICS	8, 9	42	1	1	2	2	26	8	2	0
23	Encampment Operations	05/10/23	05/11/23	San Vicente	5	SJC	Unincorporated, 8	27	3	1	1	0	9	11	2	0
24	Encampment Operations	05/16/23	05/16/23	Grand and 52nd	9	HOPICS	9	54	4	3	0	0	32	11	4	0
25	Encampment Operations	05/31/23	06/01/23	Lomita/McCoy	15	Harbor Interfaith Services, Inc. (HARBOR)	13, 15	69	3	2	2	0	39	16	7	0
26	Encampment Operations	06/06/23	06/06/23	Hollywood/EI Centro	13	TPC	12	33	0	0	1	0	14	12	5	1
27	Encampment Operations	06/13/23	06/14/23	Chatsworth Metrolink	12	HOPE	12	56	11	1	2	0	18	18	6	0
28	Encampment Operations	06/29/23	06/29/23	Rancho/Jim Gilliam	10	HOPICS	8, 9, Unincorporated	42	12	2	2	0	18	5	3	0
29	Encampment Operations	07/06/23	07/07/23	Ritchie Valens/Paxton Park/118	7	LAFH	7	53	4	2	1	0	21	17	8	0
30	Encampment Operations	07/27/23	07/27/23	Grand/Broadway/45th	9	HOPICS	9	44	2	0	0	1	21	17	3	0
31	Encampment Operations	08/10/23	08/10/23	Selma Ave	13	TPC	13	41	5	0	2	1	21	9	3	0
32	Encampment Operations	09/12/23	09/13/23	Aetna/Van Nuys	6	HOPE	6	55	8	1	0	2	22	18	4	0
33	Encampment Operations	09/19/23	09/19/23	Wyandotte	3	HOPE	3	70	18	2	4	0	20	22	4	0
34	Encampment Operations	10/03/23	10/03/23	Balboa/Devonshire	12	HOPE	12	35	3	1	2	0	20	3	6	0
35.a	Encampment Operations	10/11/23	10/12/23	Virgil/Shatto Park	1,10,13	SJC	13	116	26	1	4	1	46	30	7	1
35.b						PATH	13									
36.a	Encampment Operations	10/24/23	10/24/23	Venice/Globe	5,11	SJC	8, 11	75	19	1	0	0	15	18	22	0
36.b						FTS										
37	Encampment Operations	11/07/23	11/08/23	Wilshire/Little	1	PATH	1	81	12	3	4	0	20	30	12	0
38	Encampment Operations	11/21/23	11/21/23	Canoga Ave/Vanowen St	3	HOPE	6	11	1	0	0	0	6	3	1	0
39	Encampment Operations	11/29/23	11/29/23	Hoover/81st	8	HOPICS	8	47	21	2	1	0	16	6	1	0
40.a	Encampment Operations	12/06/23	12/08/23	Forest Lawn	4	HOPE	6	32	7	1	0	0	15	8	1	0
40.b						LAFH	2									
41	Repopulation Operations	12/08/23	12/08/23	Figueroa Corridor Repop A	9	HOPICS / SJC	9	13	2	0	1	0	1	5	4	0
42	Repopulation Operations	12/08/23	12/08/23	Grand/Vernon Repop A	9	HOPICS	9	7	3	0	0	0	2	2	0	0
43	Repopulation Operations	12/12/23	12/12/23	101/Cahuenga Repop A	4	TPC	13	3	0	0	0	0	3	0	0	0
44	Repopulation Operations	12/12/23	12/12/23	Hollywood/EI Centro Repop A	13	TPC	13	2	0	0	0	0	2	0	0	0
45	Repopulation Operations	12/12/23	12/12/23	Figueroa Corridor Repop B	9	HOPICS	9	2	0	0	0	0	0	0	2	0
46	Encampment Operations	12/14/23	12/14/23	1st and Spring 2	14	Weingart	14	25	5	0	1	0	7	10	2	0
47	Repopulation Operations	12/14/23	12/14/23	Ritchie Valens/Paxton Park/118 Repop A	7	LAFH	2	5	1	0	1	1	1	1	0	0

# Attachment 3: Inside Safe Program Metrics

24

Table 4. Inside Safe Operations by Council District and Placement Status <sup>1</sup>

No.	Type of Operation	Start Date	End Date	Location/Program	Council District	Service Provider for Operation	Council District where Placements Were Made	No. of Placements <sup>2</sup>	Current Status <sup>1</sup>	Interim Housing	Deceased	Incarcerated	Medical or Psychiatric Facility	Permanent Housing	Returned to Homelessness	Returned to Homelessness - Working with Providers	Substance Abuse Facility
48	Repopulation Operations	12/18/23	12/18/23	Ritchie Valens/Paxton Park/118 Repop B	7	LAFH	7	1	0	0	0	1	0	0	0	0	0
49	Repopulation Operations	12/19/23	12/19/23	Figueroa Corridor Repop C	9	HOPICS / SJC	9	5	0	0	0	0	0	2	3	0	0
50	Repopulation Operations	12/19/23	12/19/23	Grand/Vernon Repop B	9	HOPICS / SJC	9	2	0	0	0	0	0	1	1	0	0
51	Repopulation Operations	12/20/23	12/20/23	Ritchie Valens/Paxton Park/118 Repop C	7	LAFH	2	1	0	0	0	0	1	0	0	0	0
52	Encampment Operations	01/09/24	01/09/24	Poinsettia/Romaine St	5,13	TPC	13	39	6	3	4	0	0	17	8	1	0
53	Repopulation Operations	01/16/24	01/16/24	101 / Cahuenga Repop B	4	TPC / PATH / Weingart	13, 14	12	4	0	0	0	0	3	4	1	0
54	Repopulation Operations	01/18/24	01/18/24	87th & Western Repop A	8	HOPICS	8	4	4	0	0	0	0	0	0	0	0
55	Encampment Operations	01/19/24	01/19/24	Crenshaw/Victoria	8	HOPICS	8, 9	11	4	0	0	0	0	1	4	2	0
56	Encampment Operations	02/01/24	02/01/24	Alhambra/College	1,14	Weingart	14	10	2	1	0	0	1	3	2	1	0
57	Repopulation Operations	02/06/24	02/06/24	Poinsettia/Romaine St Repop A	5,13	TPC	13	1	0	0	0	0	0	1	0	0	0
58	Repopulation Operations	02/08/24	02/08/24	Victory & Vineland Repop A	2	LAFH	N/A	6	0	0	0	0	0	3	2	1	0
59	Repopulation Operations	02/08/24	02/08/24	Wyandotte Repop A	3	HOPE	6	1	0	0	0	0	0	1	0	0	0
60	Repopulation Operations	02/09/24	02/09/24	Balboa/Devonshire Repop A	12	HOPE	6	2	0	0	0	0	0	0	2	0	0
61	Repopulation Operations	02/13/24	02/14/24	Crenshaw/ Victoria Repop A	8	HOPICS	8	3	1	0	0	0	0	0	2	0	0
62	Repopulation Operations	02/14/24	02/15/24	Figueroa Corridor Repop D	9	HOPICS / FTS	8, 9	8	4	1	0	0	0	2	1	0	0
63	Repopulation Operations	02/14/24	02/16/24	Rancho/ Jim Gilliam Repop A	10	HOPICS / SJC / FTS	8, 9	9	4	0	0	0	0	1	4	0	0
64	Repopulation Operations	02/20/24	02/20/24	105/Figueroa/Hoover Repop A	15	N/A	N/A	1	0	0	0	0	0	0	1	0	0
65	Repopulation Operations	02/21/24	02/22/24	Figueroa Corridor Repop E	9	HOPICS / PATH	9, 13	5	0	0	0	0	0	2	3	0	0
66	Repopulation Operations	02/21/24	02/22/24	Rancho/ Jim Gilliam Repop B	10	HOPICS / FTS	8	11	1	0	0	0	0	5	4	1	0
67	Repopulation Operations	02/22/24	02/22/24	Crenshaw/ Victoria Repop B	8	HOPICS	8	4	2	0	0	0	0	0	2	0	0
68	Encampment Operations	02/23/24	02/23/24	Sunset/Gower (6063 Sunset Blvd)	13	TPC / SJC	13	4	2	0	0	0	0	1	1	0	0
69	Encampment Operations	02/23/24	02/23/24	Wakefield/Terra Bella	6	HOPE	6	10	4	0	1	0	0	3	1	1	0
70	Repopulation Operations	02/29/24	02/29/24	Crenshaw/Victoria Repop C	8	HOPICS	8	3	0	0	0	0	0	0	1	2	0
71	Repopulation Operations	03/04/24	03/04/24	Rancho/ Jim Gilliam Repop C	10	SJC	8	1	0	0	0	0	0	0	1	0	0
72	Encampment Operations	03/06/24	03/06/24	Alameda Triangle	1	LAFH	1, 14	6	0	0	0	0	0	2	4	0	0
73	Repopulation Operations	03/07/24	03/07/24	101 / Cahuenga Repop C	4	PATH / Weingart	13, 14	17	4	0	0	0	0	2	8	3	0
74	Encampment Operations	03/12/24	03/12/24	Vernon/Avalon	9	FTS	8	12	6	0	0	0	0	2	4	0	0
75	Repopulation Operations	03/12/24	03/13/24	Victory & Vineland Repop B	2	LAFH	2, 7	1	0	0	0	0	0	1	0	0	0
76	Repopulation Operations	03/13/24	03/13/24	Canoga/Vanowen Repop A	3	LAFH	7	2	0	0	0	0	0	0	1	1	0
77	Encampment Operations	03/15/24	03/15/24	Willow Tree Inn	2	LAFH	2	4	1	0	0	0	0	0	2	1	0
78	Targeted Inside Safe Efforts	03/15/24	-	LA Grand ERF	Various	TSA / Weingart	14	247	56	11	1	1	1	74	68	35	1
79	Targeted Inside Safe Efforts	-	-	Mayfair ERF	Various			386	191	3	13	2	2	72	64	41	0
80	Repopulation Operations	03/20/24	03/20/24	99th/Flower Repop A	8	FTS	8	1	0	0	0	0	0	1	0	0	0
81	Repopulation Operations	03/20/24	03/21/24	Lomita McCoy Repop A	15	HARBOR	13, 15	11	0	1	0	0	0	9	1	0	0
82	Encampment Operations	03/21/24	03/21/24	RFK Inspiration Park	10	TPC / SJC	13	24	7	0	2	0	0	5	8	2	0
83	Encampment Operations	03/27/24	03/27/24	Fountain/Alexandria Ave	13	SJC	13	19	8	0	1	0	0	4	3	2	1
84	Repopulation Operations	03/27/24	03/27/24	101 / Cahuenga Repop D	4	SJC	13	2	0	0	0	0	0	1	0	1	0
85	Repopulation Operations	03/27/24	03/27/24	Figueroa Corridor Repop F	9	HOPICS / SJC	9, 13	5	2	0	0	0	0	1	2	0	0
86	Repopulation Operations	03/27/24	03/27/24	Rancho/ Jim Gilliam Repop D	10	HOPICS	8	2	1	0	0	0	0	0	1	0	0
87	Repopulation Operations	03/27/24	03/27/24	87th & Western Repop B	8	HOPICS	9	1	1	0	0	0	0	0	0	0	0
88	Encampment Operations	03/28/24	03/28/24	Foothill Blvd. & Bengal St.	7	LAFH	7	21	3	0	1	0	0	5	6	6	0
89	Repopulation Operations	03/28/24	03/28/24	Victory/Vineland Repop C	2	LAFH	2	1	0	0	0	0	0	1	0	0	0
90	Repopulation Operations	04/03/24	04/03/24	Canoga/Vanowen Repop B	3	LAFH	2	2	2	0	0	0	0	0	0	0	0
91	Repopulation Operations	04/03/24	04/03/24	Willow Tree Inn Repop A	2	LAFH	2	1	1	0	0	0	0	0	0	0	0
92	Repopulation Operations	04/03/24	04/03/24	Figueroa Corridor Repop G	9	HOPICS / SJC	9, Unincorporated	3	0	0	0	0	0	0	3	0	0
93	Repopulation Operations	04/03/24	04/05/24	Rancho/ Jim Gilliam Repop E	10	HOPICS	9	1	0	0	0	0	0	1	0	0	0
94	Repopulation Operations	04/05/24	04/05/24	99th/Flower Repop B	8	FTS	8	2	1	0	0	0	0	1	0	0	0
95	Repopulation Operations	04/09/24	04/09/24	Wyandotte Repop B	3	LAFH	7	4	3	0	0	0	0	0	0	1	0
96	Encampment Operations	04/10/24	04/10/24	Gilbert Lindsay Recreation Center	9	HOPICS / SJC / FTS	9, Unincorporated	10	3	0	0	0	0	3	4	0	0
97	Repopulation Operations	04/10/24	04/10/24	Wilshire/Little Repop A	1	FTS	14	2	0	0	0	0	0	0	2	0	0
98	Repopulation Operations	04/10/24	04/10/24	Poinsettia/Romaine St Repop B	5,13	SJC	13	1	1	0	0	0	0	0	0	0	0
99	Repopulation Operations	04/10/24	04/10/24	101 / Cahuenga Repop E	4	SJC	13	3	1	0	0	1	0	0	0	1	0
100	Encampment Operations	04/11/24	04/11/24	Pacific Coast Hwy	15	HARBOR	15	41	19	0	1	0	0	9	10	2	0
101	Repopulation Operations	04/16/24	04/17/24	Lomita McCoy Repop B	15	HARBOR	15	5	1	0	0	0	0	1	3	0	0
102	Encampment Operations	04/17/24	04/17/24	Vermont Median	8	HOPICS / SJC / FTS	8, 9, 11, Unincorporated	38	6	0	2	0	0	13	12	5	0



# Attachment 3: Inside Safe Program Metrics

25

Table 4. Inside Safe Operations by Council District and Placement Status <sup>1</sup>

No.	Type of Operation	Start Date	End Date	Location/Program	Council District	Service Provider for Operation	Council District where Placements Were Made	No. of Placements <sup>2</sup>	Current Status <sup>1</sup>	Deceased	Incarcerated	Medical or Psychiatric Facility	Permanent Housing	Returned to Homelessness	Returned to Homelessness - Working with Providers	Substance Abuse Facility
103	Repopulation Operations	04/17/24	04/17/24	Foothill Blvd. & Bengal St. Repop A	7	LAFH	7	5	0	0	0	0	1	3	1	0
104	Repopulation Operations	04/22/24	04/22/24	Foothill Blvd. & Bengal St. Repop B	7	FTS / HOPE	7, 14	1	0	0	0	0	0	1	0	0
105	Repopulation Operations	04/24/24	04/24/24	Canoga/Vanowen Repop C	3	HOPE	7	5	1	0	0	0	1	2	1	0
106	Repopulation Operations	04/24/24	04/24/24	Rancho/ Jim Gilliam Repop F	10	FTS	9	1	0	0	0	0	0	0	1	0
107	Repopulation Operations	04/24/24	04/24/24	99th/Flower Repop C	8	SJC	Unincorporated	2	0	0	0	0	0	1	1	0
108	Repopulation Operations	04/25/24	04/25/24	Lomita McCoy Repop C	15	HARBOR	15	1	1	0	0	0	0	0	0	0
109	Encampment Operations	05/01/24	05/01/24	10 Fwy & Barrington (2463 S Barrington Ave)	11	SJC	11	7	3	0	0	0	2	1	1	0
110	Encampment Operations	05/02/24	05/02/24	Harold Way/Western and Sunset 101	13	TPC	13	2	0	0	0	0	1	1	0	0
111	Repopulation Operations	05/08/24	05/08/24	Selma Repop A	13	TPC	13	3	0	1	0	0	1	1	0	0
112	Repopulation Operations	05/08/24	05/08/24	Virgil/Shatto Park Repop A	1,10,13	SJC	13	3	2	0	0	0	1	0	0	0
113	Repopulation Operations	05/15/24	05/15/24	Wilshire/Little Repop B	1	FTS	14	2	0	0	0	0	0	2	0	0
114	Repopulation Operations	05/15/24	05/15/24	Lomita McCoy Repop D	15	HARBOR	13	5	2	0	0	0	1	2	0	0
115	Repopulation Operations	05/15/24	05/15/24	Figueroa Corridor Repop H	9	SJC / FTS	8, 14	4	1	0	1	0	0	2	0	0
116	Repopulation Operations	05/15/24	05/15/24	Culver Median Repop A	11	SJC	11	3	1	0	0	0	0	2	0	0
117	Encampment Operations	05/30/24	05/30/24	6th St & Van Ness Ave.	13	PATH	13	7	5	1	0	0	0	0	1	0
118	Encampment Operations	05/31/24	05/31/24	Sunset Blvd/ Cherokee Ave & McCadden	13	PATH	13	36	5	1	2	0	10	11	7	0
119	Repopulation Operations	06/04/24	06/05/24	Foothill Blvd. & Bengal St. Repop C	7	LAFH	2, 6	6	2	0	0	0	0	4	0	0
120	Repopulation Operations	06/04/24	06/04/24	Chatsworth Metrolink Station Repop A	12	HOPE	3	1	0	0	0	0	0	0	2	0
121	Repopulation Operations	06/04/24	06/04/24	Lomita McCoy Repop E	15	HARBOR	15	2	1	0	0	0	1	0	0	0
122	Repopulation Operations	06/05/24	06/05/24	Figueroa Corridor Repop I	9	HOPICS / SJC / FTS	8, 9, Unincorporated	6	0	0	0	0	1	4	0	1
123	Repopulation Operations	06/10/24	06/10/24	Chatsworth Metrolink Station Repop B	12	HOPE	3	1	0	0	0	1	0	0	0	0
124	Encampment Operations	06/11/24	06/11/24	W 3rd St. & Union Ave	1	PATH	1	12	4	1	0	0	0	4	3	0
125	Encampment Operations	06/18/24	06/18/24	Olympic Blvd & S Gramercy Pl	5	PATH	1	11	1	0	0	0	3	7	0	0
126	Encampment Operations	06/25/24	06/25/24	Franklin & Argyle	4,13	SJC	4	32	21	0	0	1	4	5	1	0
127	Encampment Operations	06/26/24	06/26/24	87th/Broadway	8	HOPICS / FTS	8, 9	34	10	0	0	0	9	14	1	0
128	Repopulation Operations	07/02/24	07/02/24	Virgil/Shatto Park Repop B	1,10,13	SJC	13	6	2	0	0	0	0	1	3	0
129	Repopulation Operations	07/10/24	07/10/24	Wakefield/Terra Bella Repop 7.10.2024	6	HOPE	6	3	2	0	0	0	0	1	0	0
130	Repopulation Operations	07/10/24	07/10/24	CD 3 Riverbed Repop 7.10.2024	3	HOPE	3	1	1	0	0	0	0	0	0	0
131	Repopulation Operations	07/10/24	07/10/24	Foothill Blvd. & Bengal St. Repop 7.10.2024	7	LAFH	2, 7	3	1	0	0	0	0	1	1	0
132	Repopulation Operations	07/10/24	07/10/24	Alhambra/College Repop 7.10.2024	1,14	Abundant Blessings (AB) / B.A.R.E Truth (BARE)	14	2	0	0	0	0	1	1	0	0
133	Repopulation Operations	07/10/24	07/10/24	Wyandotte Repop 7.10.2024	3	LAFH	7	1	0	0	1	0	0	0	0	0
134	Encampment Operations	07/16/24	07/16/24	Sunset & Western	13	SJC	4, 13	35	9	0	4	1	4	12	5	0
135	Encampment Operations	07/17/24	07/17/24	MLK Jr Park	8	HOPICS / SJC	8, 9	10	6	1	0	0	1	1	1	0
136	Repopulation Operations	07/18/24	07/18/24	W 3rd St. & Union Ave Repop 7.18.2024	1	PATH	1	9	3	0	0	0	1	5	0	0
137	Repopulation Operations	07/18/24	07/18/24	Wilshire & Little Repop 07.18.2024	1	PATH	1	17	6	0	3	0	1	7	0	0
138	Repopulation Operations	07/24/24	07/24/24	Foothill Blvd. & Bengal St. Repop 7.24.2024	7	HOPE	6	4	0	0	0	0	2	1	1	0
139	Repopulation Operations	07/24/24	07/24/24	Lomita McCoy Repop 7.24.2024	15	HARBOR	15	2	1	0	0	0	0	1	0	0
140	Repopulation Operations	07/24/24	07/25/24	Virgil/Shatto Park Repop 7.24.2024	1,10,13	PATH	13	8	2	0	0	0	0	5	1	0
141	Repopulation Operations	07/24/24	07/25/24	Wyandotte Repop 7.24.2024	3	LAFH	2	1	0	0	0	0	0	0	1	0
142	Encampment Operations	07/25/24	07/25/24	Hollenbeck Park	14	Weingart	14	23	2	0	1	0	0	12	8	0
143	Repopulation Operations	08/07/24	08/07/24	Vernon/Avalon Repop 8.7.2024	9	HOPICS / SJC	8, 9	15	6	1	0	0	5	2	1	0
144	Repopulation Operations	08/07/24	08/07/24	Lomita McCoy Repop 8.7.2024	15	HARBOR	15	5	0	0	0	0	2	1	2	0
145	Repopulation Operations	08/07/24	08/07/24	Poinsettia/Romaine St Repop 8.7.2024	5,13	TPC / SJC	13	1	0	0	0	0	3	0	1	0
146	Repopulation Operations	08/07/24	08/07/24	Wyandotte Repop 8.7.2024	3	LAFH / HOPE	2, 7	6	2	0	0	0	0	4	0	0
147	Encampment Operations	08/13/24	08/13/24	Owensmouth & Erwin	3	HOPE	3	29	11	1	1	0	9	4	3	0
148	Encampment Operations	08/14/24	08/14/24	Hollywood Blvd & N Gower St	13	PATH / SJC /TPC	13	59	15	1	1	0	6	30	6	0
149	Encampment Operations	08/21/24	08/21/24	Sunset & Wilcox	13	TPC / SJC	13	5	2	0	0	0	2	0	1	0
150	Encampment Operations	08/27/24	08/27/24	Hope & 18th	14	FTS / AB / BARE	14	39	6	0	0	0	10	17	6	0
151	Repopulation Operations	08/28/24	08/28/24	Lomita McCoy Repop 8.28.2024	15	HARBOR	15	9	4	0	1	0	2	2	0	0
152	Repopulation Operations	08/28/24	08/28/24	MLK Jr Park Repop 8.28.2024	8	HOPICS / FTS	8	4	0	0	0	0	0	3	1	0
153	Repopulation Operations	08/28/24	08/28/24	Poinsettia/Romaine St Repop 8.28.2024	5,13	TPC / SJC	13	4	2	0	0	0	0	1	1	0
154	Repopulation Operations	08/28/24	08/28/24	Willow Tree Inn Repop 8.28.2024	2	LAFH	2	2	1	0	0	0	0	1	0	0
155	Repopulation Operations	08/28/24	08/28/24	Wyandotte Repop 8.28.2024	3	LAFH	7	7	0	1	0	0	0	3	3	0

# Attachment 3: Inside Safe Program Metrics

26

Table 4. Inside Safe Operations by Council District and Placement Status <sup>1</sup>

No.	Type of Operation	Start Date	End Date	Location/Program	Council District	Service Provider for Operation	Council District where Placements Were Made	No. of Placements <sup>2</sup>	Current Status <sup>1</sup>	Interim Housing	Deceased	Incarcerated	Medical or Psychiatric Facility	Permanent Housing	Returned to Homelessness	Returned to Homelessness - Working with Providers	Substance Abuse Facility
156	Repopulation Operations	08/30/24	08/30/24	Foothill Blvd. & Bengal St. Repop 8.30.2024	7	LAFH	2	1	0	0	0	1	0	0	0	0	0
157	Repopulation Operations	09/05/24	09/05/24	Vernon/Avalon Repop 9.5.2024	9	HOPICS / SJC	8, 9	14	8	1	0	0	0	0	5	0	0
158	Repopulation Operations	09/11/24	09/11/24	Lomita McCoy Repop 9.11.2024	15	HARBOR	15	1	0	0	0	0	0	1	0	0	0
159	Encampment Operations	09/17/24	09/17/24	7th & Serrano	10	PATH	13	19	2	0	0	0	0	3	9	5	0
160	Repopulation Operations	09/18/24	09/18/24	Vernon/Avalon Repop 9.18.2024	9	HOPICS	9	3	2	0	0	0	0	0	1	0	0
161	Repopulation Operations	09/18/24	09/18/24	Figueroa Corridor Repop 09.18.24	9	HOPICS / FTS	8, 9	2	0	0	0	0	0	2	0	0	0
162	Repopulation Operations	09/18/24	09/18/24	MLK Jr Park Repop 9.18.2024	8	HOPICS / FTS	8, 9	7	5	0	0	0	0	0	2	0	0
163	Encampment Operations	09/19/24	09/19/24	Wilshire/Lucas Ave	1	AB / BARE / PATH	1, 14	40	15	1	2	1	1	2	12	7	0
164	Encampment Operations	09/24/24	09/24/24	Olympic/James Wood & 110 FWY	1,14	Weingart / AB / BARE	14	46	11	1	1	0	0	2	21	10	0
165	Encampment Operations	09/26/24	09/26/24	Parkview & Beverly	13	PATH / SJC / TPC	13	27	18	0	0	0	0	3	3	3	0
166	Encampment Operations	10/03/24	10/03/24	Penrose St & 5 FWY	6	HOPE	3, 6, 7	21	9	0	0	0	0	0	5	7	0
167	Repopulation Operations	10/03/24	10/03/24	Wyandotte Repop 10.3.2024	3	HOPE	3	10	6	0	1	0	0	0	2	1	0
168	Encampment Operations	10/08/24	10/08/24	N Hill St & Chavez	1	Weingart	14	10	2	0	0	0	0	0	8	0	0
169	Encampment Operations	10/10/24	10/10/24	Odessa & Vanowen	6	LAFH	2	10	5	1	0	0	0	0	2	2	0
170	Encampment Operations	10/22/24	10/22/24	Weidner/Bradley	7	LAFH	7	20	9	0	0	4	0	1	4	2	0
171	Repopulation Operations	10/22/24	10/22/24	Foothill Blvd. & Bengal St. Repop 10.22.2024	7	LAFH	2, 7	3	1	0	1	0	0	0	1	0	0
172	Encampment Operations	10/29/24	10/29/24	22nd & Budlong	1,8	HOPICS / SJC / FTS	8, 9, Unincorporated	27	14	1	0	0	1	1	7	3	0
173	Repopulation Operations	10/29/24	10/29/24	Figueroa Corridor Repop 10.29.24	9	FTS	8	1	0	0	0	0	0	0	1	0	0
174	Repopulation Operations	10/30/24	10/30/24	Franklin & Argyle Repop 10.30.24	4,13	SJC	4	6	2	0	1	0	0	0	3	0	0
175	Repopulation Operations	10/30/24	10/30/24	Olympic/James Wood & 110 FWY Repop 10.30.24	1,14	BARE	14	5	2	1	0	0	0	0	0	2	0
176	Repopulation Operations	10/30/24	10/30/24	Wakefield/Terra Bella Repop 10.30.2024	6	HOPE	3	6	1	0	1	0	0	1	2	1	0
177	Repopulation Operations	10/30/24	10/30/24	Culver Median Repop 10.30.2024	11	SJC	11	1	0	0	0	0	0	1	0	0	0
178	Encampment Operations	10/31/24	10/31/24	8th & Catalina	10	HOPICS	8, 9	2	1	0	0	0	0	0	0	1	0
179	Repopulation Operations	10/31/24	10/31/24	MLK Jr Park Repop 10.31.2024	8	SJC	8, Unincorporated	2	0	0	0	0	0	1	1	0	0
180	Repopulation Operations	10/31/24	10/31/24	1st and Spring Repop 10.31.2024	14	Weingart	14	2	0	0	0	0	0	2	0	0	0
181	Encampment Operations	11/07/24	11/07/24	Hotel Silverlake	13	PATH	13	38	11	1	0	0	0	0	15	11	0
182	Repopulation Operations	11/07/24	11/07/24	Virgil/Shatto Park Repop 11.7.2024	1,10,13	PATH	8	1	0	0	0	0	0	2	3	2	0
183	Repopulation Operations	11/13/24	11/13/24	1st and Spring Repop 11.13.2024	14	FTS / BARE	14	9	3	0	0	0	0	1	2	3	0
184	Repopulation Operations	11/13/24	11/13/24	Figueroa Corridor Repop 11.13.2024	9	FTS / SJC / HOPICS / LAFH	9	11	2	0	0	0	0	1	6	2	0
185	Encampment Operations	11/21/24	11/21/24	Strathern St.	2	LAFH / HOPE	13	13	4	1	0	0	0	2	3	3	0
186	Encampment Operations	12/03/24	12/03/24	Ivar & Sunset	13	SJC	13	3	2	1	1	1	0	0	1	0	0
187	Encampment Operations	12/10/24	12/10/24	Franklin & Cahuenga	4	SJC / PATH	4,13	10	7	0	0	0	0	0	3	0	0
188	Encampment Operations	12/12/24	12/12/24	Roscoe Blvd & Deering Ave	3	HOPE	3	21	8	0	0	0	0	3	7	3	0
189	Encampment Operations	12/17/24	12/19/24	Osborne & 5 FWY	6,7	LAFH / HOPE	6, 7	22	11	0	0	0	0	0	9	1	0
190	Repopulation Operations	12/05/24	12/05/24	RFK Inspiration Park Repop 12.5.24	10	County	N/A	12	5	0	0	0	0	1	2	4	0
191	Repopulation Operations	12/05/24	12/05/24	Wilshire/Little Repop 12.5.2024	1	Weingart	14	21	7	0	0	0	0	0	8	6	0
192	Repopulation Operations	12/06/24	12/06/24	Parkview & Beverly Repop 12.6.24	13	County / SJC / PATH	N/A, 1, 13	5	2	0	0	0	0	0	1	2	0
193	Repopulation Operations	12/11/24	12/11/24	Franklin & Argyle Repop 12.11.24	4,13	TPC	13	2	0	0	0	0	0	0	0	0	0
194	Repopulation Operations	12/11/24	12/11/24	Wilshire/Little Repop 12.11.2024	1	PATH	1	20	4	1	0	0	1	0	9	5	0
195	Repopulation Operations	12/11/24	12/11/24	Figueroa Corridor Repop 12.11.2024	9	SJC	Unincorporated	5	1	0	0	0	0	1	3	0	0
196	Repopulation Operations	12/11/24	12/11/24	Foothill Blvd & Bengal St Repop 12.11.2024	7	HOPE	3, 7	4	4	0	0	0	0	0	0	0	0
197	Repopulation Operations	12/11/24	12/11/24	CD 3 Riverbed Repop 12.11.2024	3	HOPE	3	2	2	0	0	0	0	0	0	0	0
198	Repopulation Operations	12/11/24	12/11/24	Gilbert Lindsay Recreation Center Repop 12.11.2024	9	HOPICS	9	2	1	0	0	0	0	0	1	0	0
199	Repopulation Operations	12/11/24	12/11/24	Rancho/Jim Gilliam Repop 12.11.2024	10	HOPICS	9	1	0	0	0	0	0	0	0	0	0
200	Repopulation Operations	12/11/24	12/11/24	Canoga Ave/Vanowen St Repop 12.11.2024	3	HOPE	7	2	0	0	0	0	0	0	0	0	0
201	Repopulation Operations	12/11/24	12/11/24	Owensmouth & Erwin Repop 12.11.2024	3	HOPE	3	4	3	0	0	0	0	0	1	0	0
202	Repopulation Operations	12/19/24	12/19/24	1st and Spring 2 Repop 12.19.2024	14	PATH	1	1	0	0	0	0	0	0	0	1	0
203	Repopulation Operations	12/19/24	12/19/24	Ivar & Sunset Repop 12.19.24	13	TPC	13	2	1	0	0	1	0	0	0	0	0
204	Repopulation Operations	12/23/24	12/23/24	Pacific Coast Hwy Repop 12.23.24	15	HARBOR	15	1	0	0	0	0	0	0	1	0	0
205	Repopulation Operations	12/24/24	12/24/24	Strathern St. Repop 12.24.24	2	LAFH	2	1	1	0	0	0	0	0	0	0	0
206	Encampment Operations	01/23/25	01/23/25	17th St/Main St.	14	PATH / FTS / BARE	1, 14	16	5	0	1	0	0	1	8	1	0
207	Encampment Operations	01/23/25	01/23/25	45th St/Main St.	9	SJC	14	11	7	0	0	0	0	1	2	1	0

# Attachment 3: Inside Safe Program Metrics

27

Table 4. Inside Safe Operations by Council District and Placement Status <sup>1</sup>

No.	Type of Operation	Start Date	End Date	Location/Program	Council District	Service Provider for Operation	Council District where Placements Were Made	No. of Placements <sup>2</sup>	Current Status <sup>1</sup>	Deceased	Incarcerated	Medical or Psychiatric Facility	Permanent Housing	Returned to Homelessness	Returned to Homelessness - Working with Providers	Substance Abuse Facility
208	Encampment Operations	01/28/25	01/28/25	Beverly Blvd/Occidental Blvd	13	PATH	13	13	3	0	2	0	0	2	6	0
209	Repopulation Operations	01/13/25	01/13/25	Canoga Ave/Vanowen St Repop 1.13.25	3	HOPE	3	1	1	0	0	0	0	0	0	0
210	Repopulation Operations	01/16/25	01/16/25	Canoga Ave/Vanowen St Repop 1.16.25	3	HOPE	3	2	1	0	1	0	0	0	0	0
211	Repopulation Operations	01/22/25	01/22/25	Vernon/Avalon Repop 1.22.25	9	HOPICS	9	8	3	0	0	0	0	4	1	0
212	Repopulation Operations	01/22/25	01/22/25	Figueroa Corridor Repop 1.22.25	9	FTS / HOPICS	9	6	3	0	0	0	0	2	1	0
213	Repopulation Operations	01/22/25	01/22/25	Speedway/Ozone Repop 1.22.25	11	SJC	11	6	2	0	0	0	0	4	0	0
214	Repopulation Operations	01/22/25	01/22/25	Franklin & Argyle Repop 1.22.25	4,13	PATH / TPC	13	5	4	0	0	0	0	1	0	0
215	Repopulation Operations	01/22/25	01/22/25	Osborne & 5 FWY Repop 1.22.25	6,7	LAFH / HOPICS	13	4	3	0	0	0	0	1	0	0
216	Repopulation Operations	01/22/25	01/22/25	Victory/Vineland Repop 1.22.25	2	LAFH	2	3	2	0	0	0	0	1	0	0
217	Repopulation Operations	01/22/25	01/22/25	Owensmouth & Erwin Repop 1.22.25	3	HOPE / LAFH	3	7	7	0	0	0	0	0	0	0
218	Repopulation Operations	01/22/25	01/22/25	7th & Serrano Repop 1.22.25	10	SJC	13	2	0	0	0	0	0	1	1	0
219	Repopulation Operations	01/22/25	01/22/25	Venice/Sunset/ABH Repop 1.22.25	11	SJC	11	1	1	0	0	0	0	0	0	0
220	Repopulation Operations	01/30/25	01/30/25	Foothill Blvd & Bengal St Repop 1.30.2025	7	HOPE	6	1	0	0	0	0	0	0	1	0
221	Repopulation Operations	01/30/25	01/30/25	Roscoe Blvd & Deering Ave Repop 1.30.2025	3	HOPE	3	1	1	0	0	0	0	0	0	0
222	Encampment Operations	02/06/25	02/06/25	E 111th Pl. & Clovis Ave.	8,15	HOPICS / FTS / SJC	8,9,13	19	14	0	0	0	0	5	0	0
223	Encampment Operations	02/11/25	02/11/25	6th & Alameda	14	BARE / FTS / Weingart	14	11	3	0	0	0	0	5	3	0
224	Encampment Operations	02/13/25	02/13/25	Sunset & Custer Ave	1	PATH / SJC / TPC	13	17	9	1	0	0	0	3	4	0
225	Encampment Operations	02/27/25	02/27/25	405 & Olympic	5,11	SJC	11	10	7	0	0	0	0	1	2	0
226	Repopulation Operations	02/04/25	02/04/25	Lomita/McCoy Repop 2.4.2025	15	HARBOR	13,15	32	14	0	1	0	2	14	1	0
227	Repopulation Operations	02/12/25	02/12/25	Poinsettia/Romaine St Repop 2.12.2025	5,13	HOPE THE MISSION	4,7,13	7	3	0	1	0	1	2	0	0
228	Repopulation Operations	02/12/25	02/12/25	Ritchie Valens/Paxton Park/118 Repop 2.12.2025	7	HOPICS	8,9	9	4	0	0	1	2	1	1	0
229	Repopulation Operations	02/12/25	02/12/25	Rancho/Jim Gilliam Repop 2.12.2025	10	HOPICS	8	11	8	0	0	0	2	1	0	0
230	Repopulation Operations	02/12/25	02/12/25	MLK Jr Park Repop 2.12.2025	8	HOPICS	8	2	2	0	0	0	0	0	0	0
231	Repopulation Operations	02/26/25	02/26/25	Virgil/Shatto Park Repop 2.26.2025	1,10,13	TPC	1,13,14,15	14	7	0	0	0	0	3	4	0
232	Repopulation Operations	02/27/25	02/27/25	1st & Spring Repop 02.27.2025	14	Weingart	14	1	1	0	0	0	0	0	0	0
233	Encampment Operations	03/06/25	03/06/25	Hope/33rd St.	9	SJC / HOPICS / FTS	9	37	24	0	0	0	0	9	4	0
234	Encampment Operations	03/13/25	03/13/25	Myra/Sunset Underpass	13	PATH	13	4	1	0	0	0	0	2	1	0
235	Encampment Operations	03/18/25	03/18/25	Van Buren & 30th	8	HOPICS / FTS / SJC	8	4	3	0	0	0	0	1	0	0
236	Encampment Operations	03/20/25	03/20/25	405 & Parthenia	6,12	HOPE	13	9	4	0	1	0	0	4	0	0
237	Encampment Operations	03/27/25	03/27/25	Bundy & Ohio	11	PATH	13	10	7	1	0	0	0	2	0	0
238	Repopulation Operations	03/04/25	03/04/25	Sunset & Wilcox Repop 03.04.2025	13	PATH	13	1	1	0	0	0	0	0	0	0
239	Repopulation Operations	03/11/25	03/11/25	Canoga Ave/Vanowen St Repop 03.11.2025	3	HOPE	3	1	0	0	0	0	0	1	0	0
240	Repopulation Operations	03/12/25	03/12/25	Hollywood Blvd & N Gower St Repop 03.12.2025	13	TPC	13	2	1	0	0	0	0	1	0	0
241	Repopulation Operations	03/12/25	03/12/25	Franklin & Argyle Repop 03.12.2025	4,13	PATH	13	5	2	0	0	0	0	2	1	0
242	Repopulation Operations	03/12/25	03/12/25	Franklin & Cahuenga Repop 03.12.2025	4	PATH	13	4	4	0	0	0	0	0	0	0
243	Repopulation Operations	03/12/25	03/12/25	7th & Serrano Repop 03.12.2025	10	Weingart	14	3	1	0	0	0	0	2	0	0
244	Repopulation Operations	03/12/25	03/12/25	Olympic/James Wood & 110 FWY Repop 03.12.2025	1,14	Weingart	14	1	0	0	0	0	0	0	1	0
245	Repopulation Operations	03/12/25	03/12/25	Hope/33rd St. Repop 03.12.2025	9	HOPICS	8	14	0	0	0	0	14	0	0	0
246	Repopulation Operations	03/13/25	03/13/25	Echo Park Repop 03.13.2025	13	PATH	13	18	11	0	0	0	0	3	4	0
247	Repopulation Operations	03/18/25	03/18/25	Hope/33rd St. Repop 03.18.2025	9	HOPICS / FTS	8	7	4	0	0	0	0	3	0	0
248	Repopulation Operations	03/18/25	03/18/25	MLK Jr Park Repop 03.18.2025	8	FTS	8	1	0	0	0	0	1	0	0	0
249	Repopulation Operations	03/20/25	03/20/25	Willow Tree Inn Repop 03.20.2025	2	LAFH	2	1	1	0	0	0	0	0	0	0
250	Repopulation Operations	03/26/25	03/26/25	Rancho/Jim Gilliam Repop 03.26.2025	10	Weingart / HOPE / HARBOR	14, 15	4	3	0	0	0	0	1	0	0
251	Repopulation Operations	03/26/25	03/26/25	Hollywood Blvd & N Gower St Repop 03.26.2025	13	HOPICS / TPC / PATH	13	7	3	0	0	0	0	4	0	0
252	Repopulation Operations	03/26/25	03/26/25	CD 3 Riverbed Repop 03.26.2025	3	HTM / LAFH	2, 3	3	2	0	0	0	0	1	0	0
253	Repopulation Operations	03/26/25	03/26/25	Sunset Blvd/ Cherokee Ave & McCadden Repop 03.26.2025	13	PATH / TPC	13	4	0	0	1	0	0	3	0	0
254	Repopulation Operations	03/26/25	03/26/25	E 111th Pl. & Clovis Ave. Repop 03.26.2025	8,15	HARBOR	15	3	1	0	0	0	0	2	0	0
255	Repopulation Operations	03/26/25	03/26/25	Wyandotte Repop 03.26.2025	3	HTM	3	1	0	0	0	0	0	1	0	0
256	Repopulation Operations	03/26/25	03/26/25	Victory/Vineland Repop 03.26.2025	2	LAFH	2	1	1	0	0	0	0	0	0	0
257	Encampment Operations	04/04/25	04/04/25	87th & Wadsworth	9	HOPICS	9	3	2	0	1	0	0	0	0	0

# Attachment 3: Inside Safe Program Metrics

28

Table 4. Inside Safe Operations by Council District and Placement Status <sup>1</sup>

No.	Type of Operation	Start Date	End Date	Location/Program	Council District	Service Provider for Operation	Council District where Placements Were Made	No. of Placements <sup>2</sup>	Current Status <sup>1</sup>	Deceased	Incarcerated	Medical or Psychiatric Facility	Permanent Housing	Returned to Homelessness	Returned to Homelessness - Working with Providers	Substance Abuse Facility
258	Encampment Operations	04/17/25	04/17/25	Washington & Normandie	1	SJC / PATH / FTS / HOPICS	7, 8, 13	48	34	0	0	0	0	9	5	0
259	Encampment Operations	04/22/25	04/22/25	Valley & Alhambra	14	FTS / BARE	14	29	24	0	0	0	0	4	1	0
260	Encampment Operations	04/24/25	04/24/25	Fielding & Haddon	7	HTM / LAFH	7	18	15	0	0	0	0	3	0	0
261	Repopulation Operations	04/03/25	04/03/25	Victory/Vineland Repop 04.03.2025	2	LAFH	2	1	0	0	0	0	0	1	0	0
262	Repopulation Operations	04/09/25	04/09/25	405 & Olympic Repop 04.09.2025	5,11	SJC	11	5	2	0	0	0	0	2	1	0
263	Repopulation Operations	04/09/25	04/09/25	Franklin & Cahuenga Repop 04.09.2025	4	TPC / SJC / PATH	13	9	4	0	1	0	0	1	3	0
264	Repopulation Operations	04/09/25	04/09/25	Franklin & Argyle Repop 04.09.2025	4,13	SJC / FTS	13,14	3	1	0	1	0	0	0	1	0
265	Repopulation Operations	04/09/25	04/09/25	405 & Parthenia Repop 04.09.2025	6,12	HTM	6	5	5	0	0	0	0	0	0	0
266	Repopulation Operations	04/16/25	04/16/25	Wilshire/Little Repop 04.16.2025	1	Weingart	14	2	1	0	0	0	0	1	0	0
267	Repopulation Operations	04/17/25	04/17/25	Alameda Triangle Repop 04.17.2025	1	URM	14	1	1	0	0	0	0	0	0	0
268	Repopulation Operations	04/17/25	04/17/25	Rancho/Jim Gilliam Repop 04.17.2025 <sup>3</sup>	40	information not available as of 10/06/25	information not available as of 10/06/25	0	0	0	0	0	0	0	0	0
269	Repopulation Operations	04/24/25	04/24/25	MLK Jr Park Repop 04.24.2025	8	URM	14	1	0	0	0	0	0	0	1	0
270	Repopulation Operations	04/30/25	04/30/25	Selma Ave Repop 04.30.2025	13	URM	14	1	0	0	0	0	1	0	0	0
271	Encampment Operations	05/01/25	05/01/25	69th & Avalon	9	Hopics / FTS / SJC	9, unincorporated	32	19	0	0	1	0	11	1	0
272	Encampment Operations	05/08/25	05/08/25	Vassar Ave/Califa St	3	HTM	3, 7, 25	19	9	0	2	0	0	7	1	0
273	Encampment Operations	05/08/25	05/08/25	Wilshire Blvd/San Diego Way	5	TPC	13	2	2	0	0	0	0	0	0	0
274	Encampment Operations	05/08/25	05/08/25	Robertson Blvd/Burton Way	5	SJC / TPC	13	9	9	0	0	0	0	0	0	0
275	Encampment Operations	05/13/25	05/13/25	W 37th & Flower	9	HOPICS / FTS	8, 9	12	9	0	1	0	0	1	0	1
276	Encampment Operations	05/14/25	05/14/25	MacArthur Park	1	PATH	13	9	5	0	0	0	0	2	1	1
277	Encampment Operations	05/20/25	05/20/25	Strathern St/Lankershim Blvd	6	Harbor / FTS / LAFH	2, 14, 15	10	7	0	0	0	0	3	0	0
278	Encampment Operations	05/22/25	05/22/25	73rd & Vermont	8	HOPICS / LAFH / FTS / SJC	7, 8	27	20	0	0	0	1	6	0	0
279	Encampment Operations	05/29/25	05/29/25	103rd/Wilmington	15	HARBOR / LAFH / HOPICS	7, 9, 13, 15	14	9	0	0	0	0	4	1	0
280	Repopulation Operations	05/07/25	05/07/25	Virgil/Shatto Park Repop 05.07.2025	1,10,13	TPC / PATH	13	14	6	0	0	0	0	6	2	0
281	Repopulation Operations	05/07/25	05/07/25	45th St/Main St. Repop 05.07.2025	9	TPC / PATH	14, unincorporated	4	1	0	0	0	0	3	0	0
282	Repopulation Operations	05/07/25	05/07/25	N Hill St & Chavez Repop 05.07.2025	1	FTS / SJC	14	3	2	0	0	0	0	1	0	0
283	Repopulation Operations	05/07/25	05/07/25	Echo Park Repop 05.07.2025	13	BARE	13	2	0	0	0	0	2	0	0	0
284	Repopulation Operations	05/07/25	05/07/25	Figueroa Corridor Repop 05.07.2025	9	TPC	Unincorporated	3	3	0	0	0	0	0	0	0
285	Repopulation Operations	05/07/25	05/07/25	Rancho/Jim Gilliam Repop 05.07.2025	10	SJC	8	5	5	0	0	0	0	0	0	0
286	Repopulation Operations	05/07/25	05/07/25	Lomita/McCoy Repop 05.07.2025	15	information not available as of 10/22/25	information not available as of 10/22/25	1	0	0	0	0	0	1	0	0
287	Repopulation Operations	05/13/25	05/13/25	6th & Alameda Repop 05.13.2025	14	URM	14	4	2	0	0	0	0	2	0	0
288	Repopulation Operations	05/15/25	05/15/25	Wilshire/Little Repop 05.15.2025	1	TPC	13	5	3	0	0	0	0	1	1	0
289	Repopulation Operations	05/15/25	05/15/25	6th & Alameda Repop 05.15.2025	14	URM	14	2	0	0	0	0	0	1	1	0
290	Repopulation Operations	05/20/25	05/20/25	6th & Alameda Repop 05.20.2025	14	URM	14	2	0	0	0	0	0	2	0	0
291	Repopulation Operations	05/20/25	05/20/25	Aetna/Van Nuys Repop 05.20.2025	6	URM	14	1	1	0	0	0	0	0	0	0
292	Repopulation Operations	05/21/25	05/21/25	Figueroa Corridor Repop 05.21.2025	9	TPC	13	2	2	0	0	0	0	0	0	0
293	Repopulation Operations	05/21/25	05/21/25	Franklin & Cahuenga Repop 05.21.2025	4	HOPICS	9	7	7	0	0	0	0	0	0	0
294	Repopulation Operations	05/21/25	05/21/25	6th & Alameda Repop 05.21.2025	14	TPC / SJC / HOPICS	8, 13	5	2	0	0	0	1	0	2	0
295	Repopulation Operations	05/21/25	05/21/25	Selma Ave Repop 5.21.2025	13	Weingart	14	1	0	0	0	0	0	0	0	0
296	Repopulation Operations	05/22/25	05/22/25	6th & Alameda Repop 05.22.2025	14	URM	14	2	2	0	0	0	0	0	0	0
297	Encampment Operations	06/26/25	06/26/25	Marmion & Ave 57	1	BARE / TPC / FTS / PATH / Union Rescue Mission (URM)	1, 13, 14	46	24	0	0	0	0	18	4	0
299	Repopulation Operations	06/03/25	06/03/25	Olympic/James Wood & 110 FWY Repop 06.03.2025	1,14	BARE	14	3	3	0	0	0	0	0	0	0
300	Repopulation Operations	06/04/25	06/04/25	Strathern St/Lankershim Blvd Repop 06.04.2025	6	LAFH	2	1	1	0	0	0	0	0	0	0
301	Repopulation Operations	06/06/25	06/06/25	Echo Park Repop 06.06.2025	13	PATH	13	1	0	0	0	0	0	0	1	0
302	Repopulation Operations	06/06/25	06/06/25	Hope & 18th Repop 06.06.2025	14	URM	14	1	0	0	0	0	0	0	1	0
303	Repopulation Operations	06/06/25	06/06/25	6th & Alameda Repop 06.06.2025	14	BARE	14	1	1	0	0	0	0	0	0	0
304	Repopulation Operations	06/09/25	06/09/25	6th & Alameda Repop 06.09.2025	14	URM	14	2	0	0	0	0	0	2	0	0
305	Repopulation Operations	06/10/25	06/10/25	45th St/Main St. Repop 06.10.2025	9	Weingart / SJC	11, 14	2	0	0	0	0	0	0	2	0
306	Repopulation Operations	06/20/25	06/20/25	87th/Broadway Repop 06.20.2025	8	HOPICS	9	2	2	0	0	0	0	0	0	0
307	Repopulation Operations	06/27/25	06/27/25	Valley & Alhambra Repop 06.27.2025	14	BARE	14	3	3	0	0	0	0	0	0	0

# Attachment 3: Inside Safe Program Metrics

29

Table 4. Inside Safe Operations by Council District and Placement Status <sup>1</sup>

No.	Type of Operation	Start Date	End Date	Location/Program	Council District	Service Provider for Operation	Council District where Placements Were Made	No. of Placements <sup>2</sup>	Current Status <sup>1</sup>	Deceased	Incarcerated	Medical or Psychiatric Facility	Permanent Housing	Returned to Homelessness	Returned to Homelessness - Working with Providers	Substance Abuse Facility
309	Encampment Operations	07/10/25	07/10/25	Manchester/Figueroa 110 Fwy	8	HOPICS / FTS / SJC	8, 9, Unincorporated	25	17	0	0	0	0	7	1	0
310	Encampment Operations	07/31/25	07/31/25	405 & Oxnard	4	LAFH / HTM / FTS / PATH	2, 3, 7, 13, 14	36	26	0	1	0	0	6	3	0
311	Repopulation Operations	07/02/25	07/02/25	Marmion & Ave 57 Repop 07.02.2025	1	TPC	13	1	1	0	0	0	0	0	0	0
312	Repopulation Operations	07/02/25	07/02/25	Echo Park Repop 07.02.2025	13	FTS / PATH / TPC / SJC	13, 14	12	9	0	0	0	1	1	1	0
313	Repopulation Operations	07/02/25	07/02/25	Olympic/James Wood & 110 FWY Repop 07.02.2025	1,14	SJC	13	2	2	0	0	0	0	0	0	0
314	Repopulation Operations	07/02/25	07/02/25	E 111th Pl. & Clovis Ave. Repop 07.02.2025	8,15	HARBOR	13, 15	4	3	0	0	0	1	0	0	0
315	Repopulation Operations	07/02/25	07/02/25	Rancho/Jim Gilliam Repop 07.02.2025	10	HOPICS / FTS	8, 9	5	4	0	0	0	0	1	0	0
316	Repopulation Operations	07/02/25	07/02/25	103rd/Wilmington Repop 07.02.2025	15	BARE / HARBOR	13, 14	3	1	0	0	0	0	1	1	0
317	Repopulation Operations	07/17/25	07/17/25	Canoga Ave/Vanowen St Repop 07.17.2025	3	HOPE	3	3	2	0	0	0	0	0	1	0
318	Repopulation Operations	07/17/25	07/17/25	Franklin & Argyle Repop 07.17.2025	4,13	SJC / TPC	4, 13	7	6	0	1	0	0	0	0	0
319	Repopulation Operations	07/17/25	07/17/25	Rancho/Jim Gilliam Repop 07.17.2025	10	HOPICS / FTS	8, 9	6	4	0	0	0	0	1	1	0
320	Repopulation Operations	07/17/25	07/17/25	E 111th Pl. & Clovis Ave. Repop 07.17.2025	8,15	HOPICS / FTS	8, 9	8	5	0	0	0	0	1	2	0
321	Repopulation Operations	07/17/25	07/17/25	405 & Parthenia Repop 07.17.2025	6,12	HOPE	6	1	1	0	0	0	0	0	0	0
322	Repopulation Operations	07/17/25	07/17/25	W 3rd St. & Union Ave Repop 07.17.2025	1	PATH / SJC	13	4	4	0	0	0	0	0	0	0
323	Repopulation Operations	07/17/25	07/17/25	Figueroa Corridor Repop 07.17.2025	9	FTS	8	3	2	0	0	0	0	1	0	0
324	Repopulation Operations	07/17/25	07/17/25	Sunset & Custer Ave Repop 07.17.2025	1	PATH / SJC / URM	13,14	14	7	0	0	0	0	2	5	0
325	Repopulation Operations	07/17/25	07/17/25	Wilshire Blvd/San Diego Way Repop 07.17.2025	5	SJC	11	6	4	0	0	0	0	1	1	0
326	Repopulation Operations	07/17/25	07/17/25	Wyandotte Repop 07.17.2025	3	HTM	3, 7	11	9	0	0	0	1	0	1	0
327	Encampment Operations	08/21/25	08/21/25	Sierra Vista & Serrano	13	PATH	1, 13	21	13	0	0	0	0	4	4	0
328	Repopulation Operations	08/06/25	08/06/25	405 & Oxnard Repop 08.06.2025	4	LAFH	7	1	1	0	0	0	0	0	0	0
329	Repopulation Operations	08/06/25	08/06/25	6th & Alameda Repop 08.06.2025	14	URM	14	5	3	0	0	0	0	2	0	0
330	Repopulation Operations	08/07/25	08/07/25	Wilshire/Little Repop 08.07.2025	1	Weingart	14	4	1	0	0	0	0	3	0	0
331	Repopulation Operations	08/14/25	08/14/25	6th & Alameda Repop 08.14.2025	14	URM	14	4	2	0	0	0	0	2	0	0
332	Repopulation Operations	08/21/25	08/21/25	Olympic/James Wood & 110 FWY Repop 08.21.2025	1,14	Weingart	14	1	0	0	0	0	0	1	0	0
333	Encampment Operations	09/11/25	09/11/25	Los Angeles & Slauson	9	HOPICS / FTS / SJC	8, 9, UI	23	21	0	0	0	0	1	1	0
334	Encampment Operations	09/18/25	09/18/25	237th St & Western Ave	15	HARBOR	15	7	7	0	0	0	0	0	0	0
335	Encampment Operations	09/23/25	09/23/25	87th St & 110 FWY Corridor	8	HOPICS / SJC / TPC / FTS	8, 9, 13, 14	35	35	0	0	0	0	0	0	0
336	Encampment Operations	09/25/25	09/25/25	Roscoe & Balboa	12	LAFH / HOPE /	2, 3	17	14	0	0	0	0	1	2	0
337	Repopulation Operations	09/19/25	09/19/25	Virgil/Shatto Park Repop 09.19.2025	1,10,13	PATH	13	1	1	0	0	0	0	0	0	0
338	Repopulation Operations	09/26/25	09/26/25	Figueroa Corridor Repop 09.26.2025	9	Weingart	14	1	1	0	0	0	0	0	0	0
339	Repopulation Operations	09/30/25	09/30/25	Robertson Blvd/Burton Way Repop 9.30.2025	5	Weingart	14	1	1	0	0	0	0	0	0	0
340	Repopulation Operations	-	-	Unknown Repop	Various	Weingart	14	23	6	0	1	0	5	7	4	0
341	To Be Determined	-	-	Scattered Site Encampments	Various	Various	Various	189	89	3	2	1	46	31	16	1
<b>TOTAL</b>								<b>5,486</b>	<b>1,766</b>	<b>102</b>	<b>124</b>	<b>31</b>	<b>1,280</b>	<b>1,546</b>	<b>626</b>	<b>11</b>

<sup>1</sup> Information as of September 30, 2025.

<sup>2</sup> Encampment operations placements and current status based on LAHSA reporting and includes duplicates.

<sup>3</sup> The individual associated with this operation was incorrectly identified as a repopulation effort. It should have been associated with the original encampment. This row will be removed on future updates.

## Attachment 4: Leasing and Service Costs for Active Occupancy Agreements Through June 2027

30

CD	# of Rooms	Rate	Term	FY 2024-25 Leasing Costs	FY 2024-25 Service Costs	Total FY 2024-25 Costs	FY 2025-26 Leasing Costs	FY 2026-27 Leasing Costs	FY 2027-28 Leasing Costs	FY 2028-29 Leasing Costs	Total Future FY Leasing Costs	FY 2025-26 Service Costs	FY 2026-27 Service Costs	FY 2027-28 Service Costs	FY 2028-29 Service Costs	Total Future FY Service Costs	Total Future FY Costs
CD 9 <sup>3</sup>	20	\$100	04/28/2025 - 04/27/2028	\$128,000	\$140,800.00	\$268,800	\$730,000	\$730,000	\$604,000	\$0	\$2,064,000	\$803,000	\$803,000	\$664,400	\$0	\$2,270,400	\$4,334,400
CD 15 <sup>2</sup>	33	\$95	03/01/2025 - 08/31/2027	\$382,470	\$442,860	\$825,330	\$1,144,275	\$1,144,275	\$194,370	\$0	\$2,482,920	\$1,324,950	\$1,324,950	\$1,328,580	\$0	\$3,978,480	\$6,461,400
CD 8 <sup>2</sup>	21	\$90	03/01/2025 - 08/31/2027	\$230,580	\$281,820	\$512,400	\$689,850	\$689,850	\$117,180	\$0	\$1,496,880	\$843,150	\$843,150	\$845,460	\$0	\$2,531,760	\$4,028,640
CD 4 <sup>3</sup>	42	\$125	06/17/2025 - 08/31/2027	\$77,246	\$132,440	\$209,686	\$2,013,924	\$2,013,924	\$342,091	\$0	\$4,369,939	\$3,452,900	\$3,452,900	\$586,520	\$0	\$7,492,320	\$11,862,259
	1 Office	\$220															
CD 13 <sup>3</sup>	26	\$125	04/28/2025 - 08/31/2027	\$208,666	\$732,160	\$940,826	\$1,215,855	\$1,252,361	\$1,065,482	\$0	\$3,533,697	\$4,175,600	\$4,175,600	\$3,454,880	\$0	\$11,806,080	\$15,339,777
CD 13 <sup>3</sup>	76	\$125	04/28/2025 - 08/31/2027	\$609,946	\$1,070,080	\$1,680,026	\$3,478,596	\$3,478,596	\$3,488,126	\$2,887,711	\$13,333,030	\$6,102,800	\$6,102,800	\$6,119,520	\$5,066,160	\$23,391,280	\$36,724,310
CD 13 <sup>3</sup>	27	\$118	06/16/2025 - 08/31/2027	\$47,786	\$44,550	\$92,336	\$1,162,791	\$1,162,791	\$197,515	\$0	\$2,523,098	\$1,084,050	\$1,084,050	\$184,140	\$0	\$2,352,240	\$4,875,338
CD 2 <sup>3</sup>	37	\$105	10/28/2024 - 08/31/2027	\$936,689	\$1,975,380	\$2,912,069	\$1,418,160	\$1,418,160	\$240,893	\$0	\$3,077,213	\$2,930,950	\$2,930,950	\$497,860	\$0	\$6,359,760	\$9,436,973
CD 9 <sup>3</sup>	27	\$88	02/10/2025 - 08/31/2027	\$335,016	\$418,770	\$753,786	\$867,240	\$867,240	\$147,312	\$0	\$1,881,792	\$1,084,050	\$1,084,050	\$184,140	\$0	\$2,352,240	\$4,234,032
CD 14 <sup>2</sup>	27	\$87	02/10/2025 - 08/31/2027	\$331,209	\$418,770	\$749,979	\$857,385	\$857,385	\$145,638	\$0	\$1,860,408	\$1,084,050	\$1,084,050	\$184,140	\$0	\$2,352,240	\$4,212,648
	1 (Pending Approval)	\$87	09/01/2025 - 08/31/2027	\$0	\$0	\$0	\$26,361	\$31,755	\$5,394		\$63,510	\$33,330	\$40,150	\$6,820	\$0	\$80,300	\$143,810
CD 9 <sup>3</sup>	25	\$89	02/10/2025 - 08/31/2027	\$313,725	\$387,750.00	\$701,475	\$812,125	\$812,125	\$137,950	\$0	\$1,762,200	\$1,003,750	\$1,003,750	\$170,500	\$0	\$2,178,000	\$3,940,200
CD 1 <sup>3</sup>	61	\$114	11/04/2024 - 08/31/2027	\$1,721,947	\$3,259,960	\$4,981,907	\$2,629,752	\$2,629,752	\$446,698	\$0	\$5,706,202	\$4,978,600	\$4,978,600	\$845,680	\$0	\$10,802,880	\$16,509,082
	1 Office	\$251															
CD 13 <sup>3</sup>	43	\$114	07/31/2024 - 08/31/2027	\$1,308,834	\$1,262,910	\$2,571,744	\$1,789,230	\$1,789,230	\$303,924	\$0	\$3,882,384	\$1,726,450	\$1,726,450	\$293,260	\$0	\$3,746,160	\$7,628,544
<b>Totals</b>	<b>467 Rooms</b>		<b>13 Motels</b>	<b>\$6,632,114</b>	<b>\$10,568,250</b>	<b>\$17,200,364</b>	<b>\$18,835,544</b>	<b>\$18,877,444</b>	<b>\$7,436,573</b>	<b>\$2,887,711</b>	<b>\$48,037,273</b>	<b>\$30,627,630</b>	<b>\$30,634,450</b>	<b>\$15,365,900</b>	<b>\$5,066,160</b>	<b>\$81,694,140</b>	<b>\$129,731,413</b>

<sup>1</sup> These estimates include the initial contract term only. Some agreements include optional extension(s).<sup>2</sup> The costs associated with these sites are estimates, pending actual execution dates. These costs may be updated in a future report.<sup>3</sup> The estimates for these sites have been updated per final contract terms, including term start dates.<sup>4</sup> Projections have been updated to reflect costs associated with long-term occupancy agreements. Reimbursement of service provider costs will be based on actuals and may be subject to change.