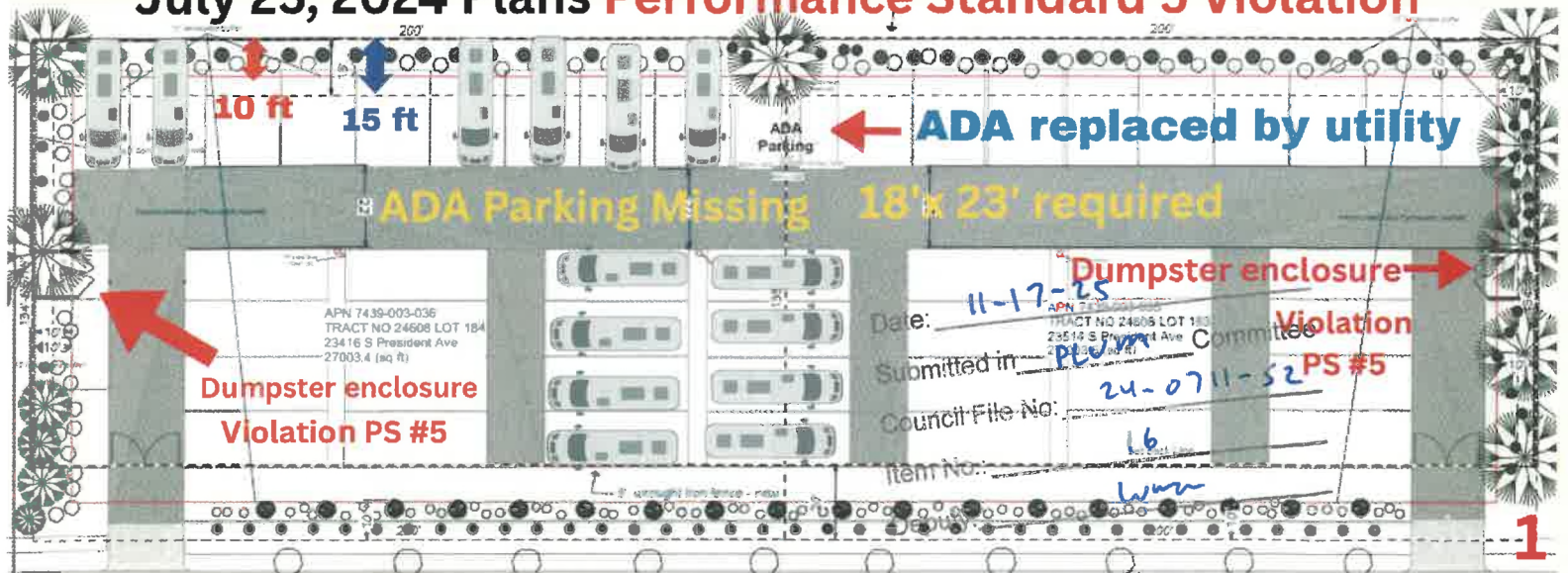
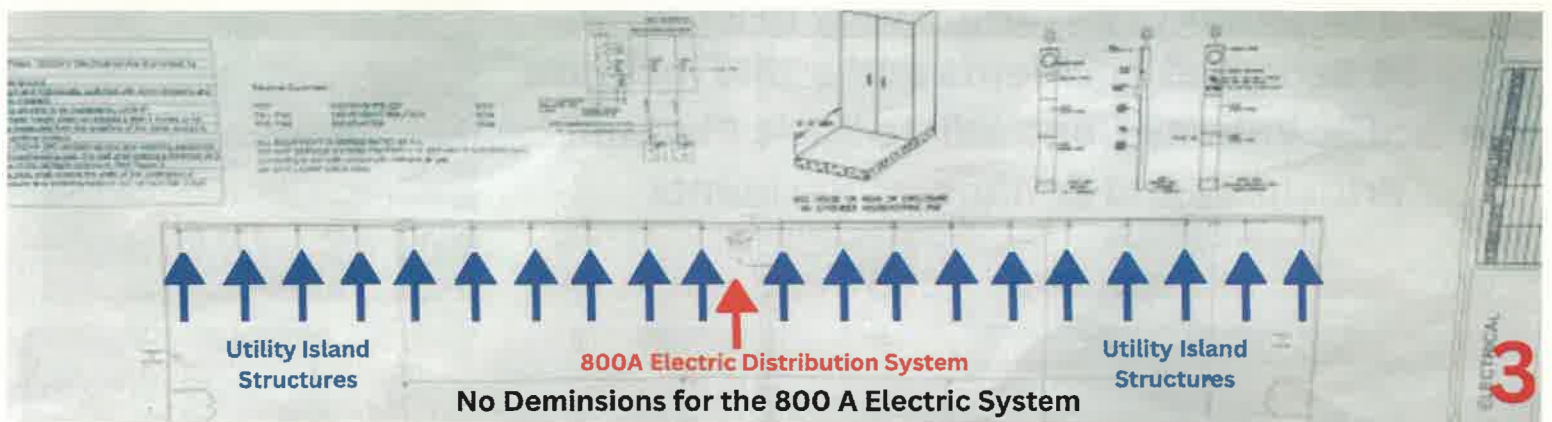
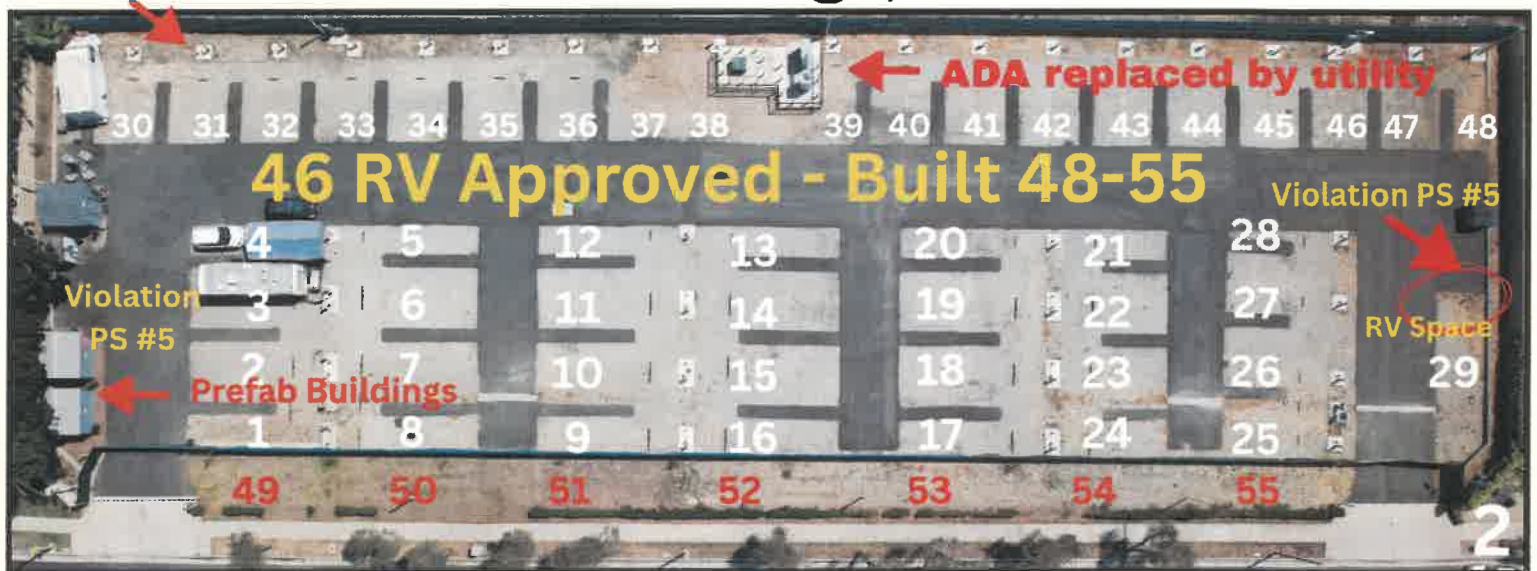


July 25, 2024 Plans Performance Standard 5 Violation



Aerial Drone Image, June 2025



This image from Sheet P-4 shows utility pedestals (small boxes) lined along the rear fence, providing hookups to each RV. These are built within the required 15-foot setback and 10-foot buffer mandated by Performance Standard #5. The larger box marked "800A" is the Electric Distribution System, which also encroaches into the buffer and eliminates the ADA parking spaces shown on Sheet P-1. This layout replaces required landscaping and ADA access with infrastructure, a clear zoning violation.

Illegal RV Expansion and Unpermitted Structures Located in the 10-Foot Buffer Zone Violations of LAMC §§ 12.21 A.1(a), 91.106.4.1, and §14.00 A.7 (Public Benefit Standards Voiced; Performance Standard 5 Violated)



No Enforcement
Approved Plans Allow Only 46 RV Stalls
Unapproved RV Stall #47 – Utility island, hookups, and pedestal installed without authorization, demonstrating intentional noncompliance.
Site contains additional unapproved stalls (up to 55 total)

4

These 3 structures are **NOT** on any of the plans and are located in the 10ft buffer violating Performance Standard #5

Utility Island hookups
Roughins ready to GO
Creates another row of RVs in the Front 20ft Buffer Zone
Rv Space #49 - 55

Wilmington: Same developer, several Rvs parked in the 20 ft buffer



5

Failure to Conduct a Traffic Study in a Corridor With 38 Reported Accidents and a 13% Increase in Traffic Volume Contradicts Basic Planning Principles and Endangers Residents

Accident June 2024 - 235th and Western



6