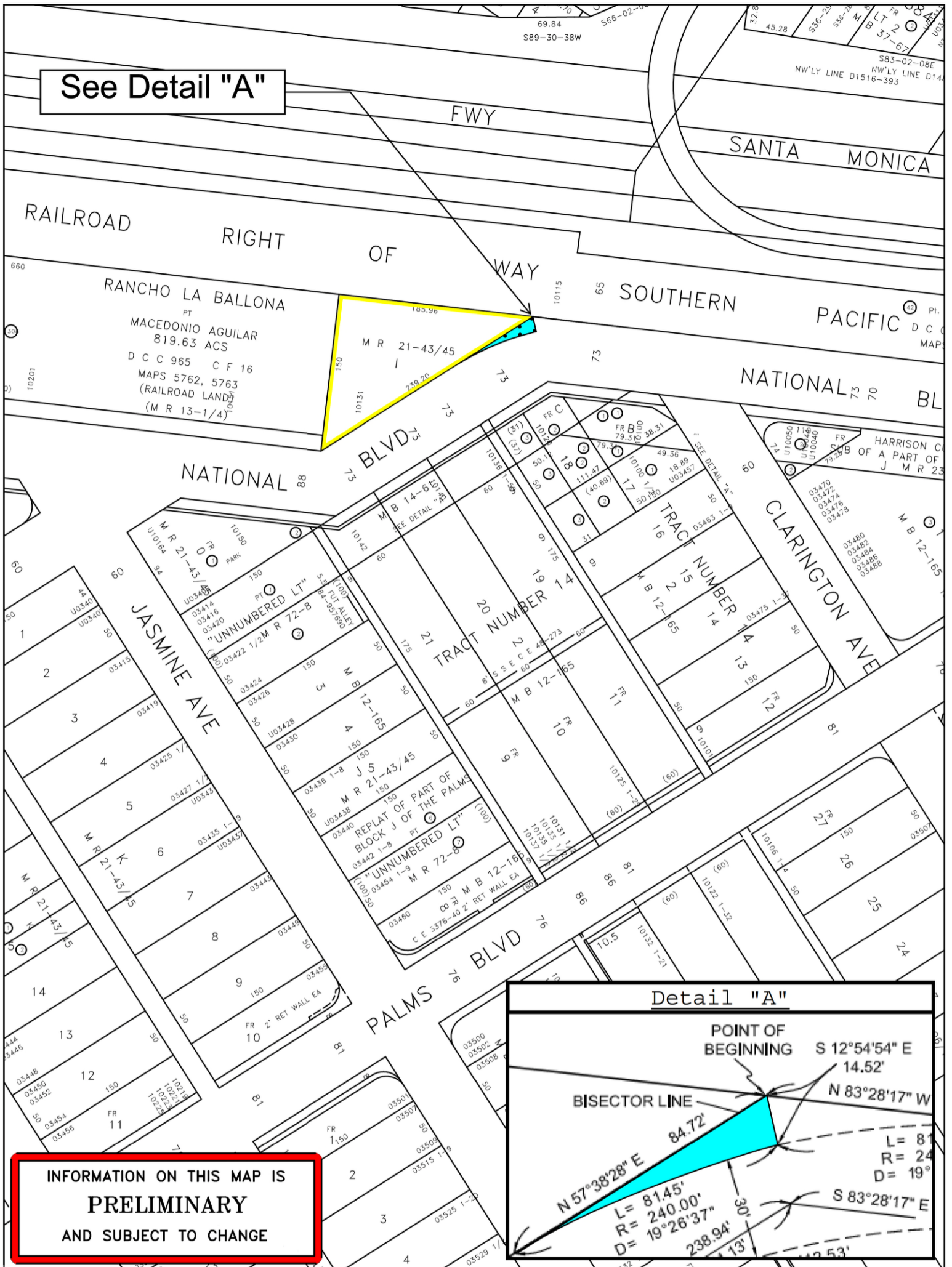
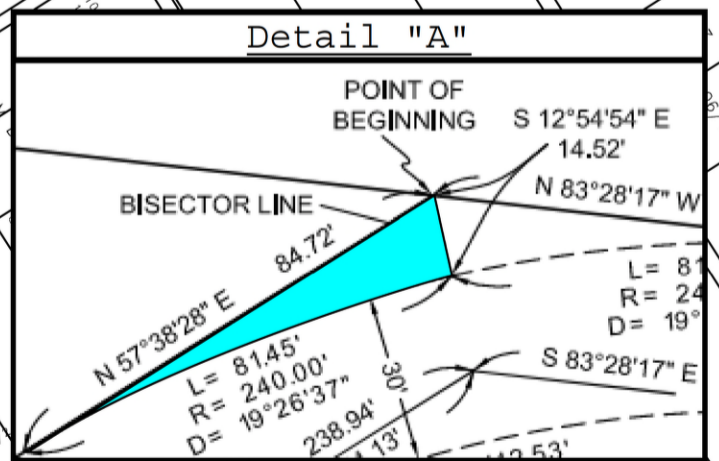


See Detail "A"



INFORMATION ON THIS MAP IS
PRELIMINARY
 AND SUBJECT TO CHANGE



TITLE: Portion of North Side of National Boulevard Approximately
 100 Feet West of Clarrington Avenue

WORK ORDER NO. VAC- E1401459
 COUNCIL FILE NO. 24-1400
 COUNCIL DIST. 5
 ENG. DIST. West Los Angeles
 CADASTRAL MAP 123B161



DEPT. OF PUBLIC WORKS
 BUREAU OF ENGINEERING
 CITY OF LOS ANGELES

EXHIBIT A

Legend: Vacation boundary as shown

