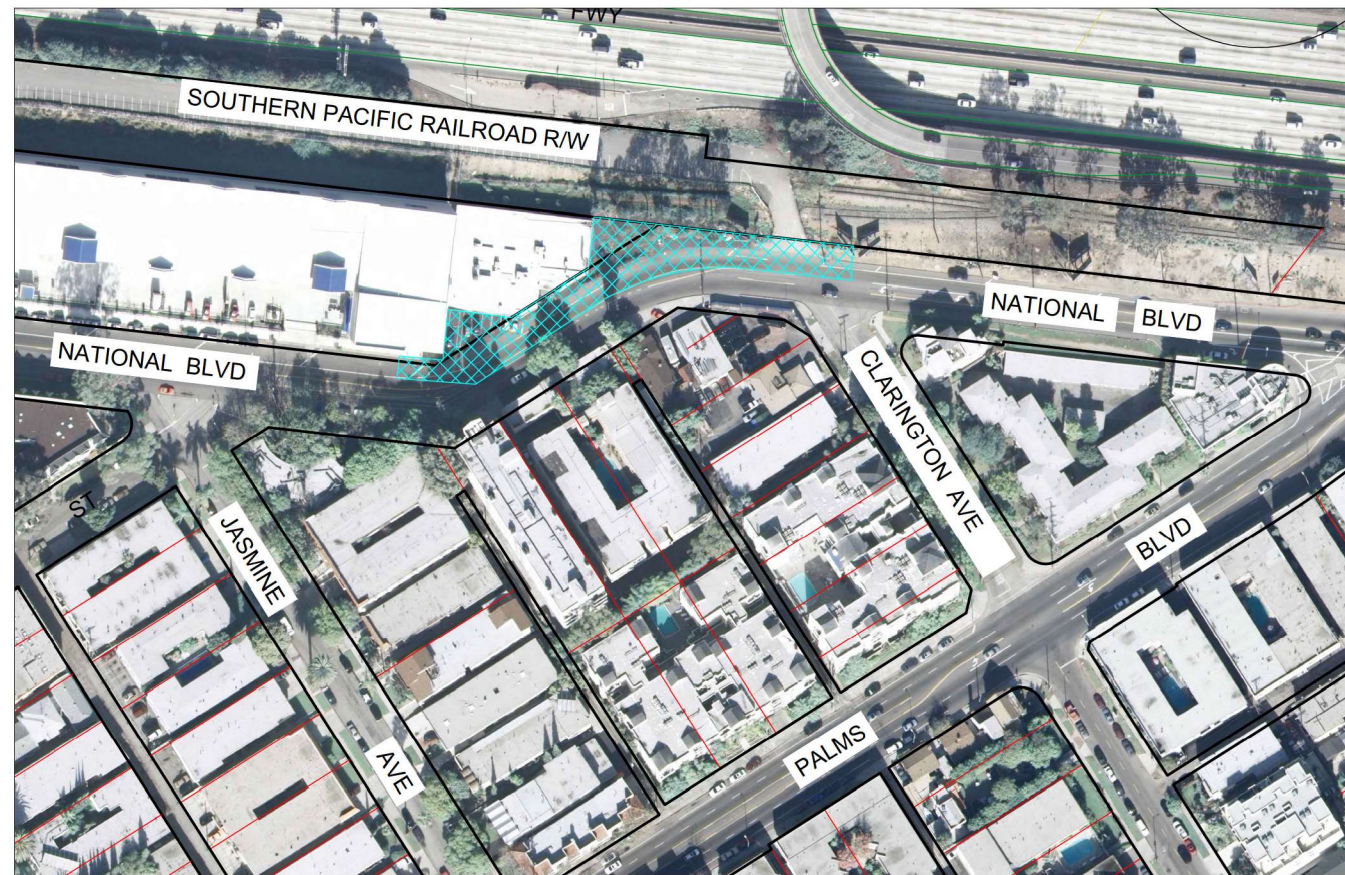
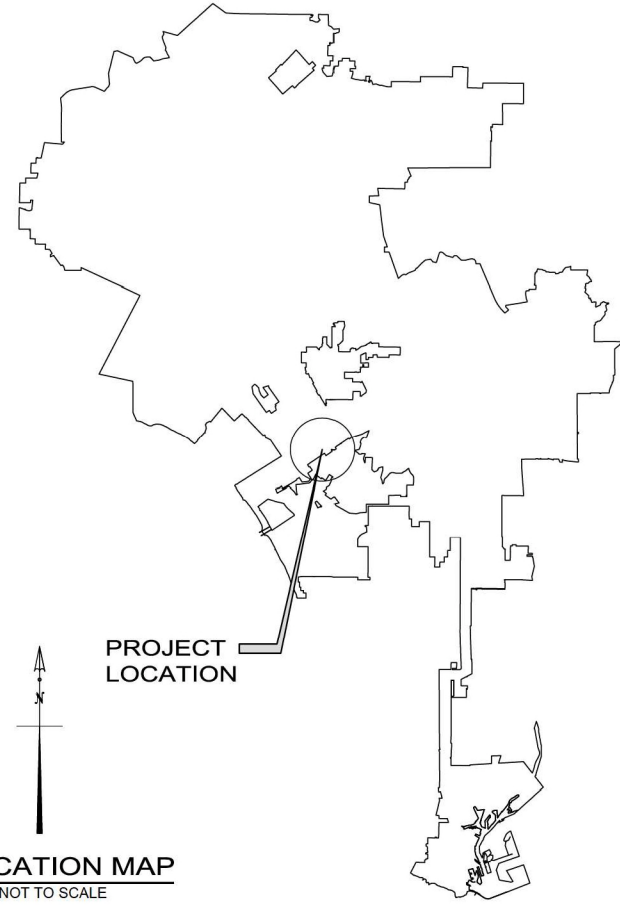
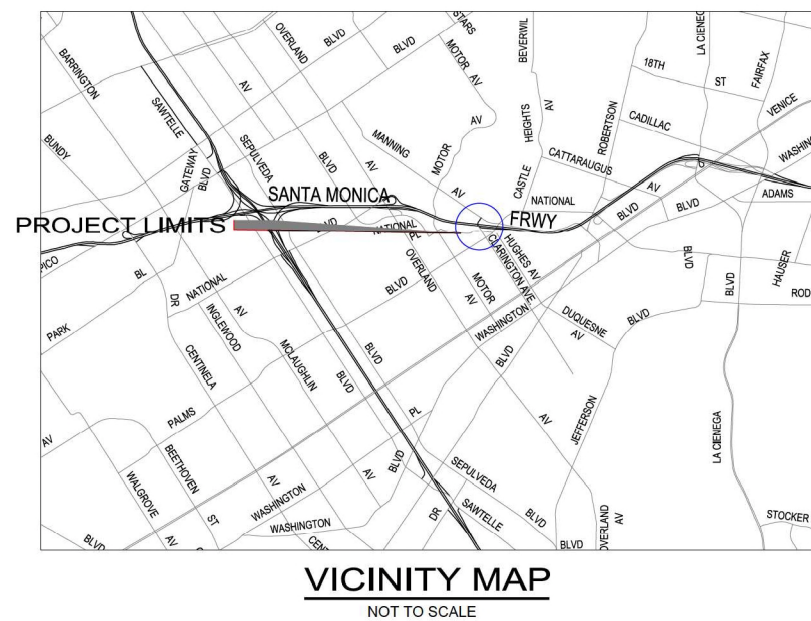


**BUREAU OF ENGINEERING  
DEPARTMENT OF PUBLIC WORKS  
CITY OF LOS ANGELES**

**NATIONAL BLVD. SIDEWALK BETWEEN CLARINGTON AVE. AND JASMINE AVE.  
WORK ORDER NO. E1908239 PROJECT No. M987**



SHEET INDEX	
SHEET Nos.	DESCRIPTION
1	PROJECT COVER SHEET
2-5	CIVIL SHEETS
6	SUBSTRUCTURE PLAN
7	TRAFFIC STRIPING PLAN



**PROJECT TEAM**

**PROJECT MANAGEMENT:** **STREET IMPROVEMENT AND STORMWATER DIVISION**  
STEVEN CHEN, P.E.  
DIVISION ENGINEER  
VERNON TABIRARA, P.E.  
PROJECT MANAGER

**STREET LIGHTING:** **BUREAU OF STREET LIGHTING**  
NORMA ISAHAKIAN  
DIRECTOR

**BID AND AWARD:** **PROJECT AWARD AND CONTROL DIVISION**  
EDICK OHANIAN, P.E.  
DIVISION MANAGER

**GEOTECHNICAL:** **GEOTECHNICAL ENGINEERING GROUP**  
PATRICK SCHMIDT, G.E.  
GROUP MANAGER

**STREETS:** **STREET IMPROVEMENT GROUP**  
GENE EDWARDS, P.E.  
GROUP MANAGER  
VERNON TABIRARA, P.E.  
PROJECT ENGINEER  
HENRY SISOMVANG  
DESIGN ENGINEER

**TRAFFIC SIGNALS AND STRIPING:** **LOS ANGELES DEPARTMENT OF TRANSPORTATION**  
SELETA REYNOLDS  
GENERAL MANAGER

**SURVEY:** **SURVEY DIVISION**  
ROBERT NIELSEN, P.L.S.  
CHIEF SURVEYOR

**ENVIRONMENTAL:** **ENVIRONMENTAL MANAGEMENT GROUP**  
MARIA MARTIN  
GROUP MANAGER

**INSPECTION:** **BUREAU OF CONTRACT ADMINISTRATION**  
JOHN L. REAMER JR.  
DIRECTOR (INSPECTOR OF PUBLIC WORKS)

**REAL ESTATE:** **REAL ESTATE GROUP**  
URIEL JIMENEZ  
GROUP MANAGER

**LANDSCAPING:** **ARCHITECTURAL DIVISION**  
MAHMOOD KARIMZADEH, A.I.A.  
PRINCIPAL ARCHITECT

**STORMWATER:** **STORMWATER GROUP**  
SUSAN SHU, P.E.  
GROUP MANAGER

THE CITY OF LOS ANGELES OR ITS OFFICERS OR AGENTS SHALL NOT BE RESPONSIBLE FOR THE ACCURACY OR COMPLETENESS OF ELECTRONIC COPIES OF THIS PLAN SHEET.

REVISIONS (DESIGN STAGE ONLY)

**BUREAU OF ENGINEERING**

ENGINEERING  
CITY OF LOS ANGELES

DATE: \_\_\_\_\_

NO. REVISIONS: \_\_\_\_\_

WORK ACCEPTED: \_\_\_\_\_

INDEX NO. **D-35129**

STRUCTURE NO. \_\_\_\_\_

GARY LEE MOORE, P.E. ENV. SP. CITY ENGINEER

ACCEPTED BY: *Alfred Z. Metz* DEPUTY CITY ENGINEER / PROGRAM MANAGER

DATE: 12/11/2018

DATE: 12/11/2018

DEPUTY CITY ENGINEER / PROGRAM MANAGER

*Gary Lee Moore*

DATE: 12/11/2018

CITY ENGINEER

PROJECT: NATIONAL BLVD. SIDEWALK BETWEEN CLARINGTON AND JASMINE

ADDRESS: NATIONAL BLVD. BETWEEN CLARINGTON AND JASMINE LOS ANGELES, CA.

COVER SHEET

WORK ORDER NO. E1908239

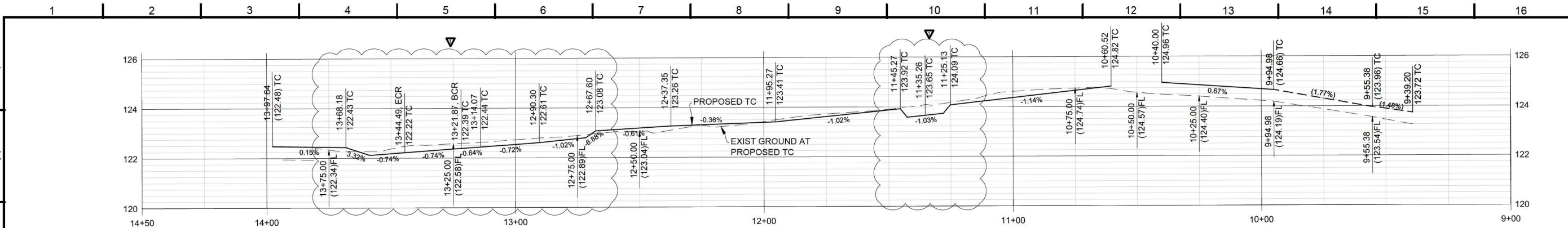
DRAWING NO. **R-1**

SHEET 1 OF 7 SHEETS

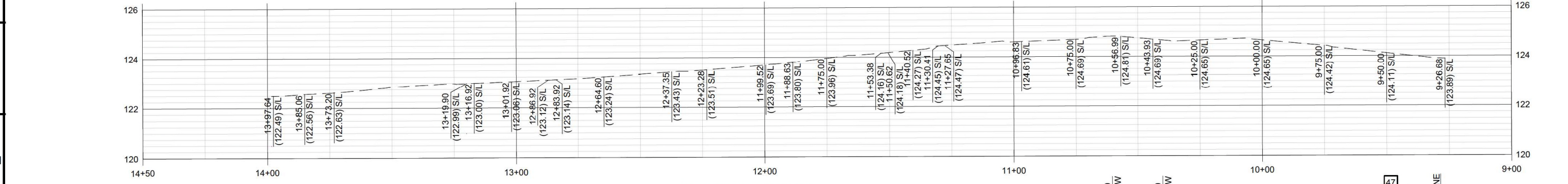




THE CITY OF LOS ANGELES OR ITS OFFICERS OR AGENTS SHALL NOT BE RESPONSIBLE FOR THE ACCURACY OR COMPLETENESS OF ELECTRONIC COPIES OF THIS PLAN SHEET.



**EXISTING S/L AND PROPOSED TC PROFILE**  
SCALE: HORIZONTAL: 1" = 20'  
VERTICAL: 1" = 2'

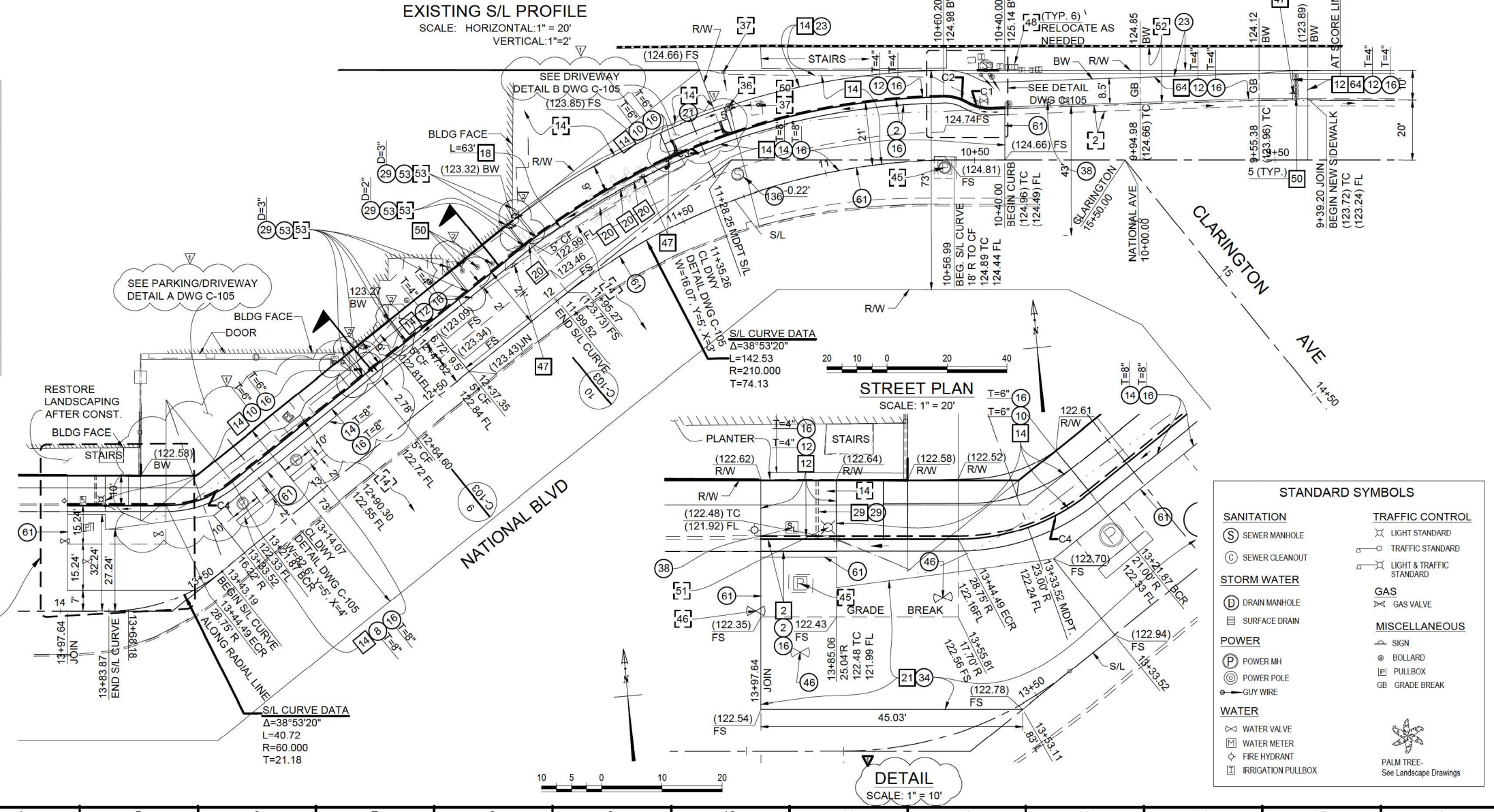


**EXISTING S/L PROFILE**  
SCALE: HORIZONTAL: 1" = 20'  
VERTICAL: 1" = 2'

CONSTRUCTION LEGEND			
○	CONSTRUCT	○	REMODEL EXISTING
□	EXISTING	□	REMOVE & CONSTRUCT
□	REMOVE	○	WORK BY OTHERS

CONSTRUCTION ITEMS		
ITEM No.	DESCRIPTION	Standard Plan No.
2	TYPE C INTEGRAL CURB AND GUTTER, a=2", b=6"	
8	CONCRETE PAVEMENT (T=AS SHOWN ON PLAN)	
9	TYPICAL SECTION	
10	CONCRETE DRIVEWAY	S-440
12	CONCRETE SIDEWALK	S-442
14	AC PAVEMENT (T=AS SHOWN ON PLAN)	
16	CRUSHED MISCELLANEOUS BASE, (T=ON PLAN)	
18	METAL BEAM GUARDRAIL	S-462
20	TREE	
21	COLDPLANE (MILL) AC PAVEMENT, T=2" MIN.	
23	GRADE ONLY	
29	CURB DRAIN	
34	VARIABLE THICKNESS AC PAVEMENT, T=2" MIN.	
36	UTILITY POLE	S-503
37	POLE ANCHOR	
38	ADJUST STREET LIGHTING PULLBOX TO GRADE	
45	DWPPS MAINTENANCE HOLE	
46	ADJUST WATER VALVE/METER TO GRADE	
47	STREET SIGN	
48	IRRIGATION PULLBOX	
50	BOLLARD	
51	STREET LIGHT	
52	PLANTER	
53	DOWNSPOUT	
61	SAWCUT	
64	UNCLASSIFIED EXCAVATION	
136	ADJUST TO GRADE SEWER MANHOLE	



**S/L CURVE DATA**

Δ=38°53'20"  
L=142.53  
R=210.000  
T=74.13

**DETAIL**

SCALE: 1" = 10'

**STANDARD SYMBOLS**

<b>SANITATION</b>	<b>TRAFFIC CONTROL</b>
○ SEWER MANHOLE	○ LIGHT STANDARD
○ SEWER CLEANOUT	○ TRAFFIC STANDARD
<b>STORM WATER</b>	○ LIGHT & TRAFFIC STANDARD
○ DRAIN MANHOLE	○ GAS
○ SURFACE DRAIN	○ GAS VALVE
<b>POWER</b>	<b>MISCELLANEOUS</b>
○ POWER MH	○ SIGN
○ POWER POLE	○ BOLLARD
○ GUY WIRE	○ PULLBOX
<b>WATER</b>	○ GRADE BREAK
○ WATER VALVE	○ PALM TREE - See Landscape Drawings
○ WATER METER	
○ FIRE HYDRANT	
○ IRRIGATION PULLBOX	

**CURVE TABLE**

CURVE #	LENGTH	RADIUS	DELTA	TANGENT
C1	7.13	15.00	27°14'50"	3.64
C2	6.84	15.00	26°07'50"	3.48
C3	153.25	231.00	38°00'40"	79.56
C4	23.76	35.00	38°53'20"	12.36

**BUREAU OF ENGINEERING**

**ENGINEERING**

CITY OF LOS ANGELES

DATE: 09/15/2022  
BY: J.T.  
REVISION NO. 2 FOR CURB DRAINS

NO. REVISIONS  
ADDRESS NO. 1  
REVISION NO. 2 FOR CURB DRAINS

STRUCTURE NO.  
INDEX NO.

PROFESSIONAL ENGINEER  
No. C76699  
REGISTERED CIVIL ENGINEER  
STATE OF CALIFORNIA

**GARY LEE MOORE, P.E.** CITY ENGINEER  
DESIGN GROUP  
ENGINEER: KITTY SIU, P.E.  
DESIGNED BY: HENRY SIOWWANG  
DRAWN BY: DANIEL DOUBLES/JACKIE TRAN  
CHECKED BY: MATTHEW MASUDA, P.E.  
APPROVED BY: ARSEN VOSKERCHYAN, P.E.

**DEPARTMENT OF PUBLIC WORKS**

VERTICAL CONTROL: P. B. 47223 ASB TRINU 185  
HORIZONTAL CONTROL: P. B. 47223 PSE, 185 TRINU 185

DRAWING TITLE: CIVIL PLAN AND DETAIL

PROJECT: NATIONAL BLVD, SIDEWALK BETWEEN CLARRINGTON AND JASMINE

WORK ORDER NO. E1908239

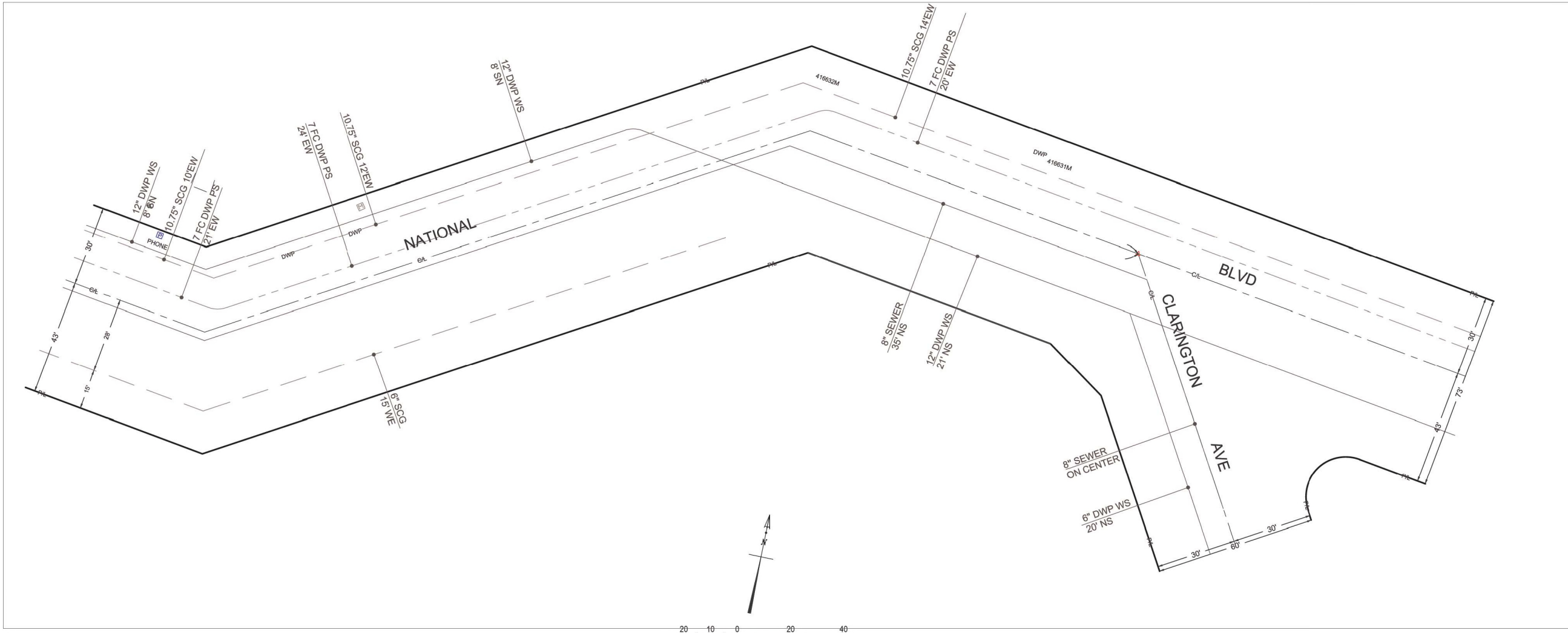
DRAWING NO. C-104

SHEET 4 OF 7 SHEETS



THE CITY OF LOS ANGELES OR ITS OFFICERS OR AGENTS SHALL NOT BE RESPONSIBLE FOR THE ACCURACY OR COMPLETENESS OF ELECTRONIC COPIES OF THIS PLAN SHEET.

REVISION CLASSES (DESIGN STAGE ONLY)



**SUBSTRUCTURE PLAN**  
 SCALE: 1" = 20'

**NOTE:**  
 THE INFORMATION ON THIS SUBSTRUCTURE PLAN IS INTENDED AS A REFERENCE ONLY. THE ENGINEER THAT STAMPED THIS PLAN AND THE CITY ARE NOT RESPONSIBLE FOR THE ACCURACY OF INFORMATION.

**Underground Service Alert**  
 Call TOLL FREE  
**811**  
 TWO WORKING DAYS BEFORE YOU DIG  
 NO WORK SHALL BE DONE ON THIS SITE UNTIL UNDERGROUND SERVICE ALERT IS NOTIFIED OF INTENTION TO GRADE OR EXCAVATE.



<b>CITY OF LOS ANGELES</b>		<b>DEPARTMENT OF PUBLIC WORKS</b>		<b>BUREAU OF ENGINEERING</b>	
VERTICAL CONTROL: F.B. 40720 PGS. 780 THRU 785 HORIZONTAL CONTROL: F.B. 40720 PGS. 780 THRU 785		<b>GARY LEE MOORE, P.E.</b> CITY ENGINEER		DATE: 09/07/18 LIC. NO. C75482	
DRAWING TITLE: <b>SUBSTRUCTURE PLAN</b>		DESIGNER: VERNON TABIRARA, P.E.		DATE: 09/07/18	
PROJECT: NATIONAL BLVD, SIDEWALK BETWEEN CLARRINGTON AND JASMINE		DESIGNED BY: HENRY SISOMVANG		DATE: 09/07/18	
WORK ORDER NO. E1908239		DRAWN BY: DANIEL DOUBLESIN		DATE: 09/07/18	
DRAWING NO. <b>SUB-1</b>		CHECKED BY: GENE EDWARDS, P.E.		DATE: 09/07/18	
SHEET 6 OF 7 SHEETS		APPROVED BY: STEVEN J. CHEN, P.E.		DATE: 12/05/18	
REVISIONS:		NO. REVISIONS:		DATE:	
INDEX NO. <b>D-35129</b>		STRUCTURE NO.		DATE:	

11/17/18 5:57 PM: s:\csw\SSS\GIS\CP\Active Projects\National Blvd at Clarrington Sidewalk Drawings\REDESIGN\2018-11-30 NationalClarrington\_0818W.dwg SUB-1 Rev. 30, 2018 - 9:25am

