

**INFORMATION ON THIS MAP IS
PRELIMINARY
AND SUBJECT TO CHANGE**

LIMITED AIRSPACE VACATION

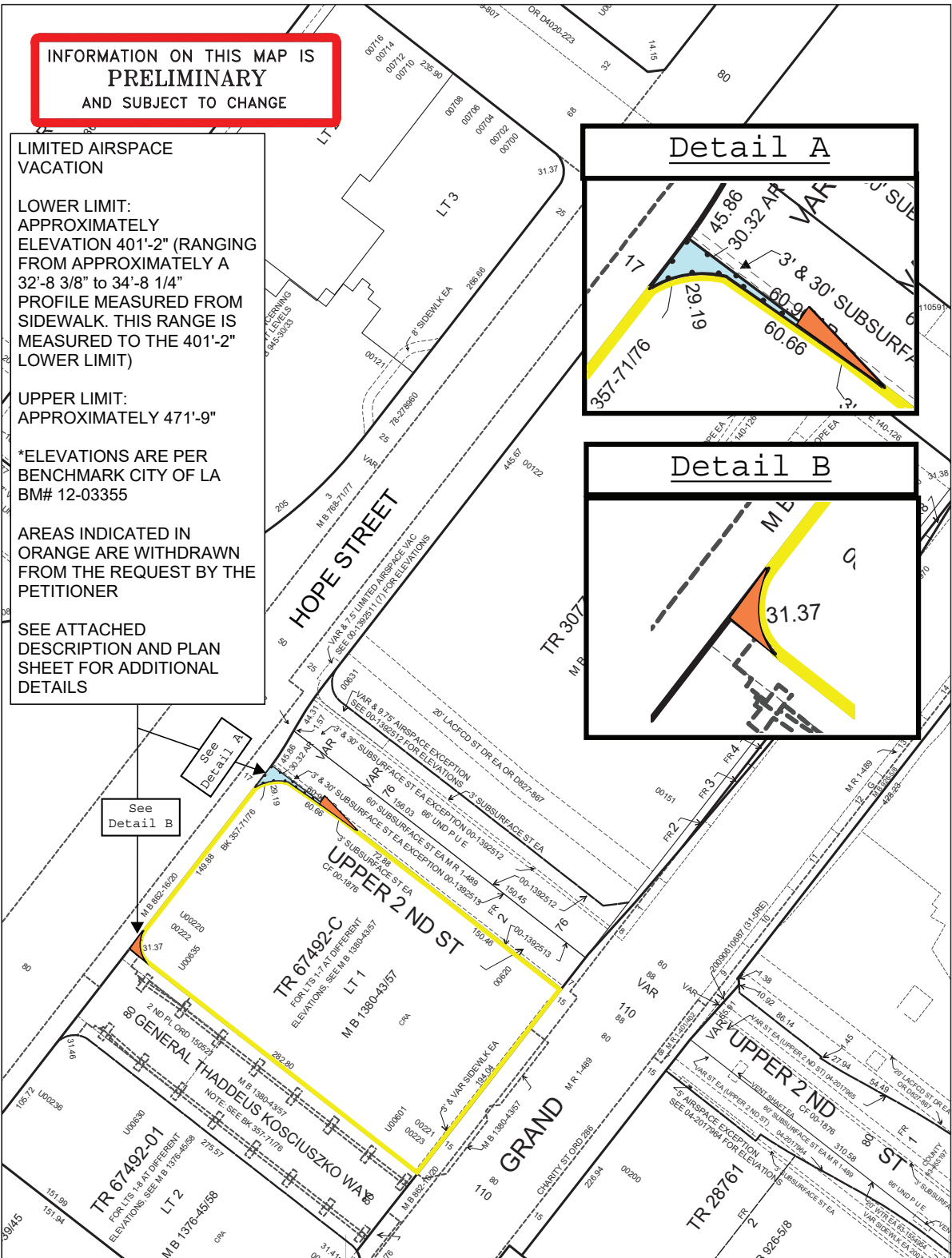
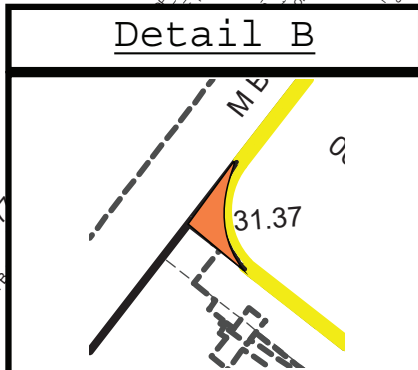
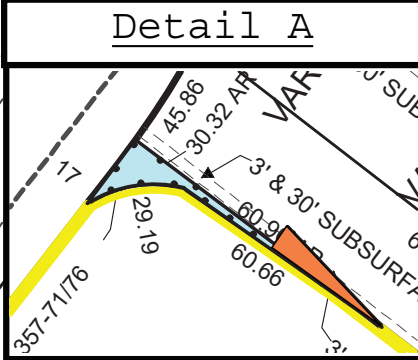
LOWER LIMIT:
APPROXIMATELY
ELEVATION 401'-2" (RANGING
FROM APPROXIMATELY A
32'-8 3/8" to 34'-8 1/4"
PROFILE MEASURED FROM
SIDEWALK. THIS RANGE IS
MEASURED TO THE 401'-2"
LOWER LIMIT)

UPPER LIMIT:
APPROXIMATELY 471'-9"

*ELEVATIONS ARE PER
BENCHMARK CITY OF LA
BM# 12-03355

AREAS INDICATED IN
ORANGE ARE WITHDRAWN
FROM THE REQUEST BY THE
PETITIONER

SEE ATTACHED
DESCRIPTION AND PLAN
SHEET FOR ADDITIONAL
DETAILS



TITLE: Airspace Vacation (Elevation 401'-2" to 471'9") at corners of Hope St and 2nd St and General Thaddeus Kosciuszko Way

WORK ORDER NO. VAC- E1401457
COUNCIL FILE NO. 24-1448-S1
COUNCIL DIST. 14
ENG. DIST. CENTRAL **T.G.** 634-F3
DISTRICT MAP 132A211-91



DEPT. OF PUBLIC WORKS
 BUREAU OF ENGINEERING
 CITY OF LOS ANGELES

EXHIBIT B LEGEND: VACATION BOUNDARY AS SHOWN

Description of Vacation Elevations

The elevations of the area requested to be vacated range from 32'-8 3/8" to 34'-8 1/4" because the sidewalk slopes:

At **marker E**, the lower limit is at 32'-8 3/8" above the sidewalk (the lowest point).

At **marker B**, the lower limit is at 34'-8 1/4" above the sidewalk (the highest point).

The **2'-0"** difference is due to the natural slope of the sidewalk/elevation grade.

