














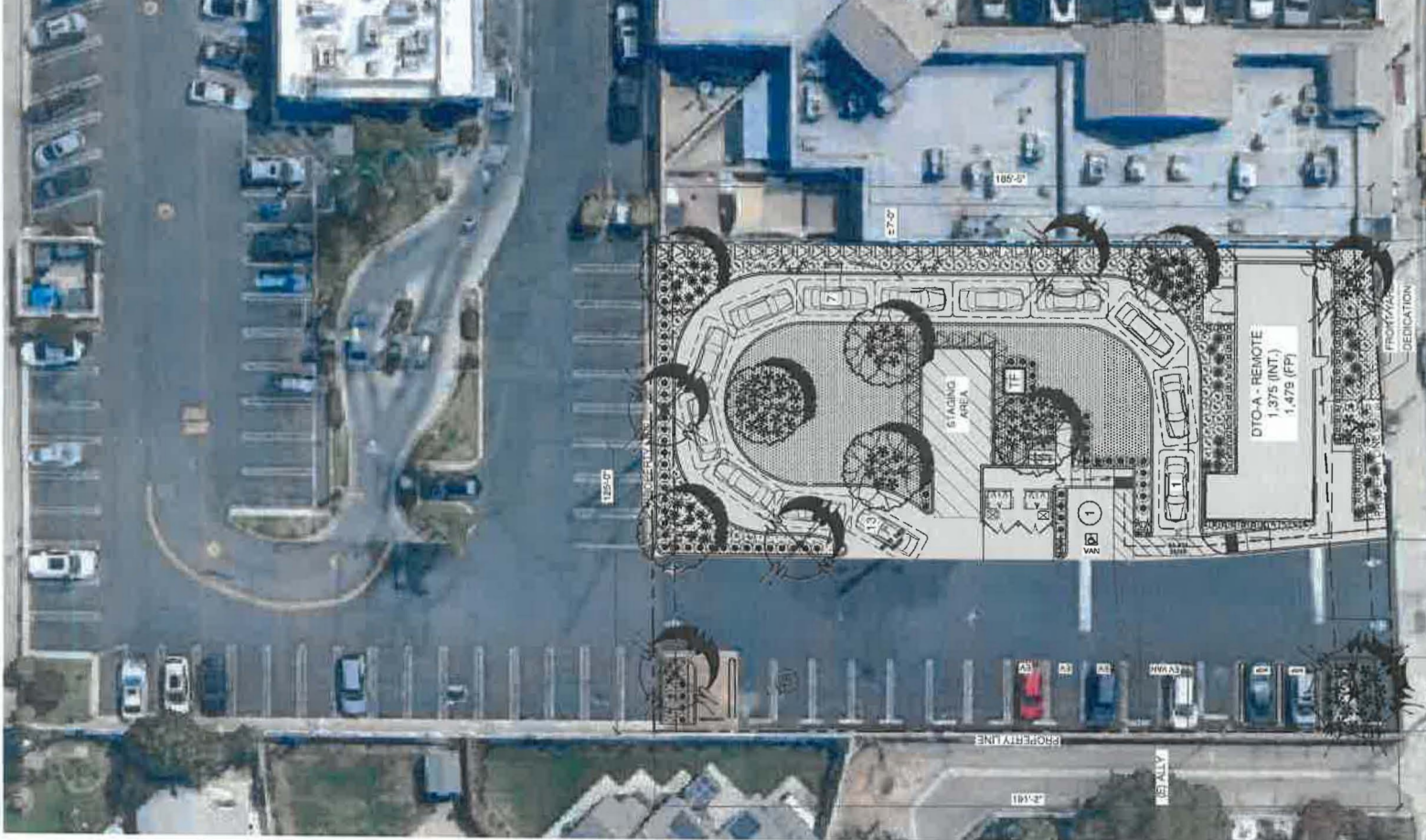


PLANT LEGEND

SYM.	BOTANICAL NAME	COMMON NAME	SIZE
	CHILOPSIS LINEARIS 'BURGUNDY'	DESERT WILLOW	24" BOX STD
	ARBUTUS 'MARINA'	STRAWBERRY TREE	36" BOX MULTI
	PARKINSONIA 'DESERT MUSEUM'	PALO VERDE	36" BOX MULTI
	DIANELLA TASMANICA 'VAREGATA'	VAREGATED FLAX LILY	5 GAL
	BOUGAINVILLEA 'BABY VICTORIA'	VAREGATED BOUGAINVILLEA	5 GAL
	MYRTUS COMMUNIS 'COMPACTA'	COMPACT MYRTLE	5 GAL
	PITTOSPORUM 'WHEELER'S DWARF'	DWARF MOCK ORANGE	5 GAL
	ELAEAGNUS PUNGENS	SILVERBERRY	5 GAL
	AGAVE ATTENUATA	AGAVE	5 GAL
	CALLISTEMON 'LITTLE JOHN'	DWARF BOTTLEBRUSH	5 GAL
	DIANELLA REVOLUTA 'LITTLE REV'	LITTLE REV FLAX LILY	5 GAL
	LOMANDRA LONGIFOLIA 'BREEZE'	DWARF MAT RUSH	5 GAL
	HARDENBERGIA 'HAPPY WANDERER'	PURPLE LILAC VINE	5 GAL
	SHREDDED BARK MULCH	TOP DRESSING	3" THICK LAYER
	MYOPORUM PARVIFOLIA	MYOPORUM	1 GAL @ 18" O.C.



IRRIGATION NOTE:
 PLANT SPECIFICATIONS WILL MEET DESIGN STANDARDS. LOCAL
 PLANT SPECIFICATIONS WILL MEET DESIGN STANDARDS.

TREES



FLOWER COLOR
 CHILOPSIS L. 'BURGUNDY' DESERT WILLOW



ARBUTUS 'MARINA' STRAWBERRY TREE



PARKINSONIA 'DESKT MUSEUM' PALO VERDE

SHRUBS



AGAVE ATENUJATTA AGAVE



BOUGAINVILLEA 'BABY VICTORIA'

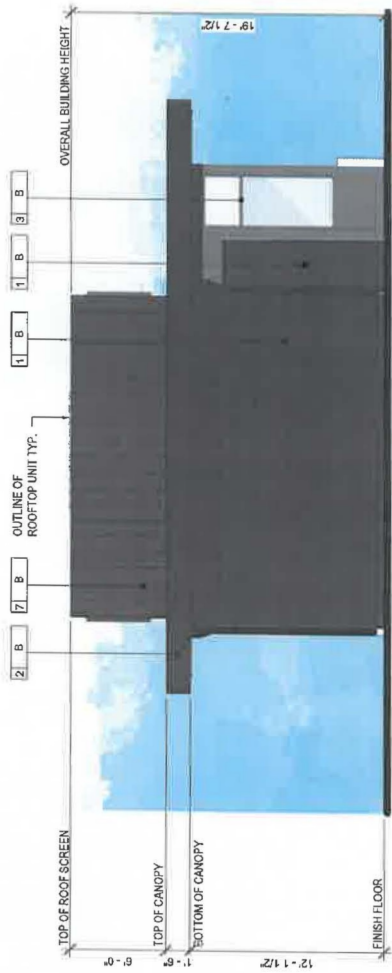


CALLISTEMON 'LITTLE JOHN' DWRF BOTTLEBRUSH

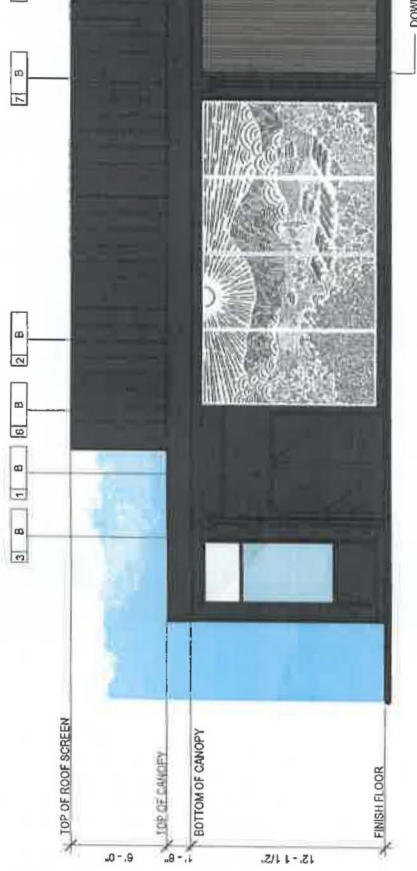


DIANELLE





4 EAST ELEVATION
SCALE: 3/16" = 1'-0"



3 NORTH ELEVATION
SCALE: 3/16" = 1'-0"

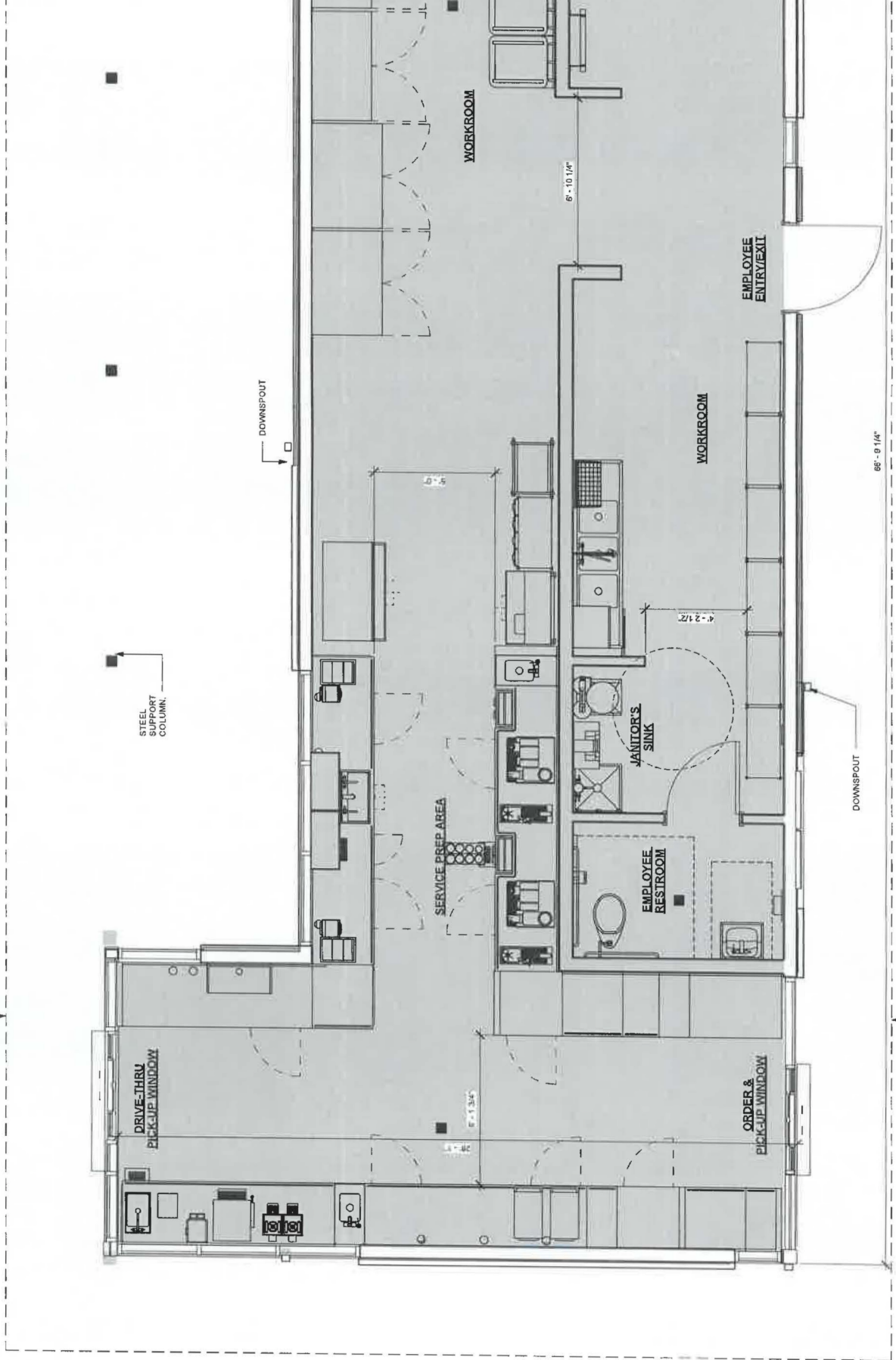


2 WEST ELEVATION
SCALE: 3/16" = 1'-0"

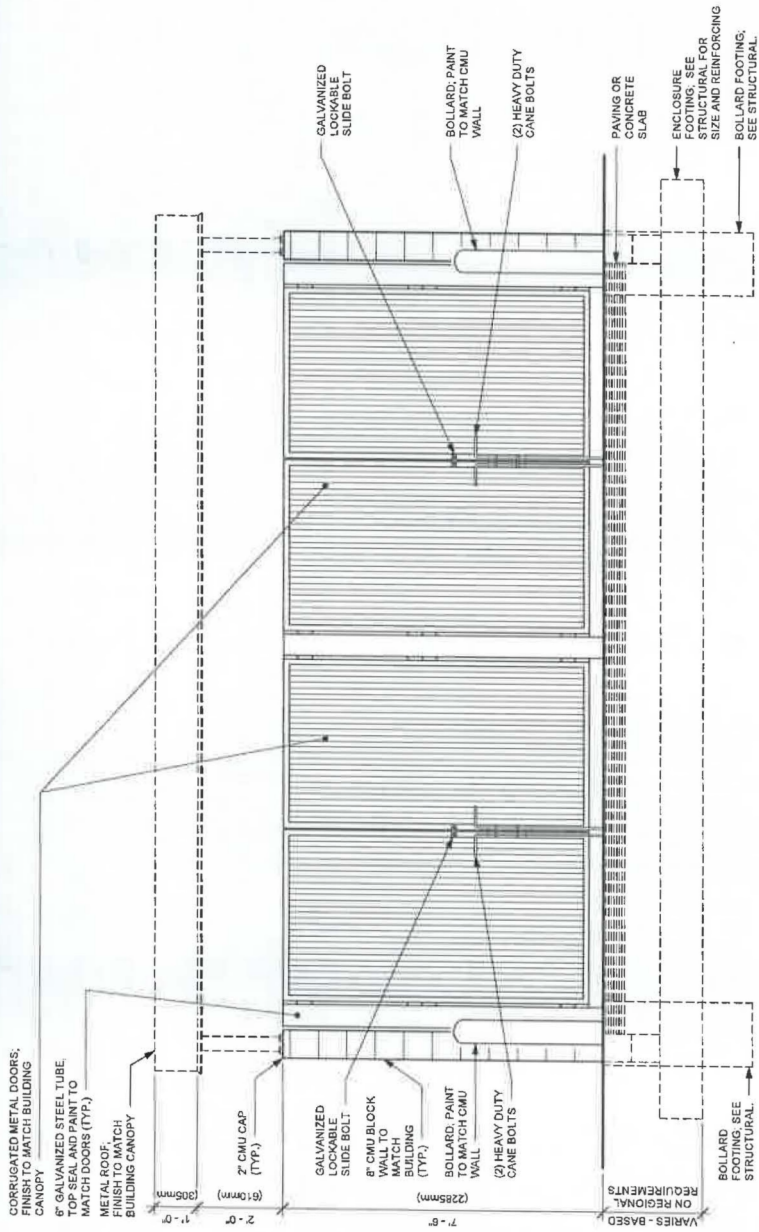


1 SOUTH ELEVATION
SCALE: 3/16" = 1'-0"

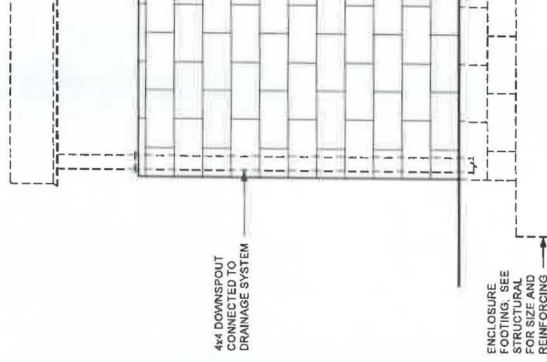
LINE OF ROOF CANOPY ABOVE.



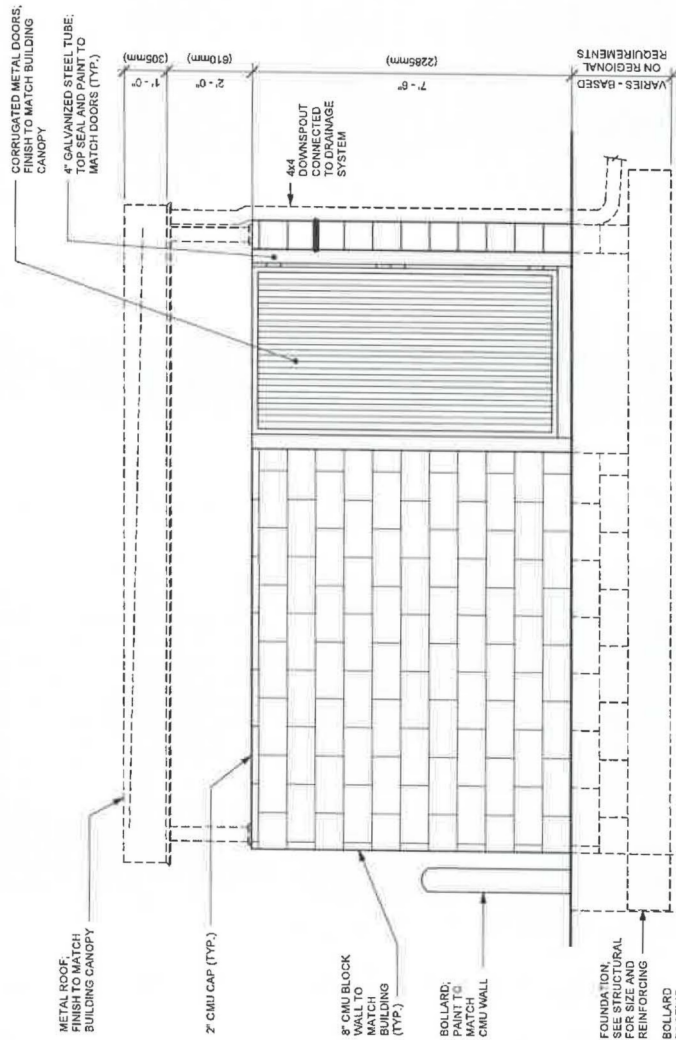
LINE OF ROOF CANOPY ABOVE.



4 FRONT ELEVATION
SCALE: 1/2" = 1'-0"

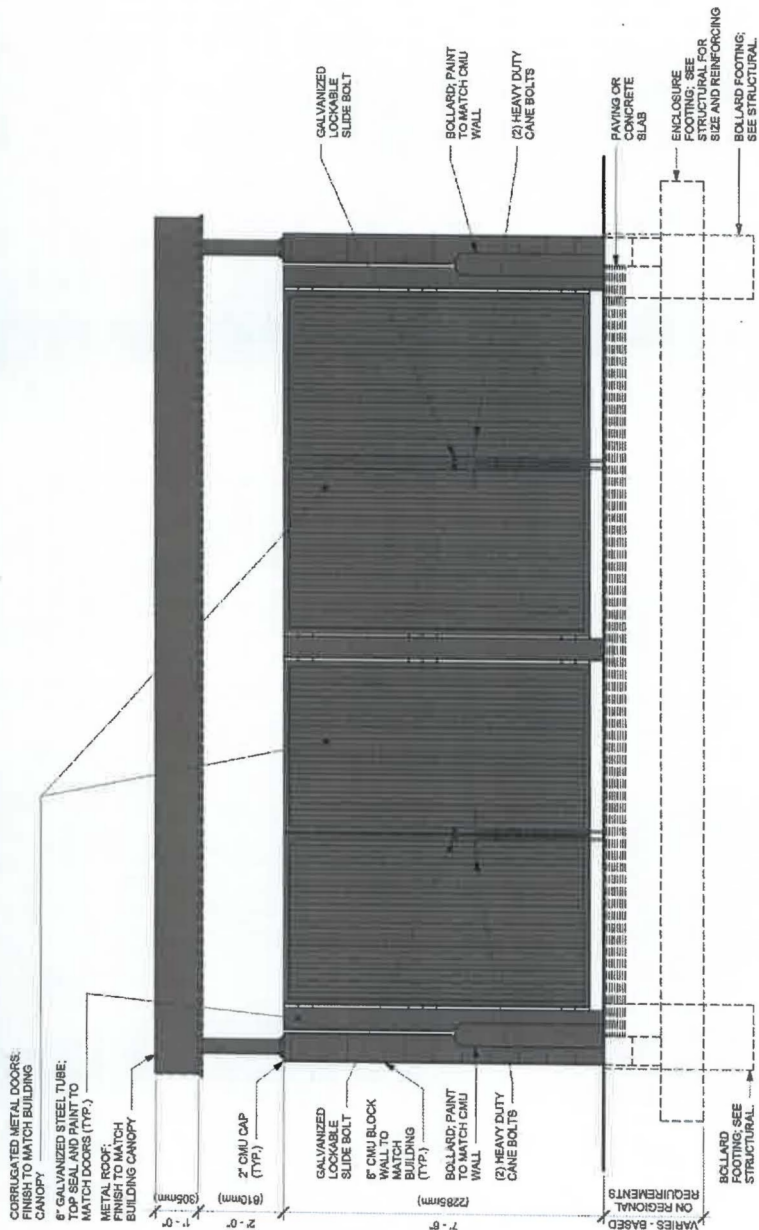


3 BACK ELEVATION
SCALE: 1/2" = 1'-0"

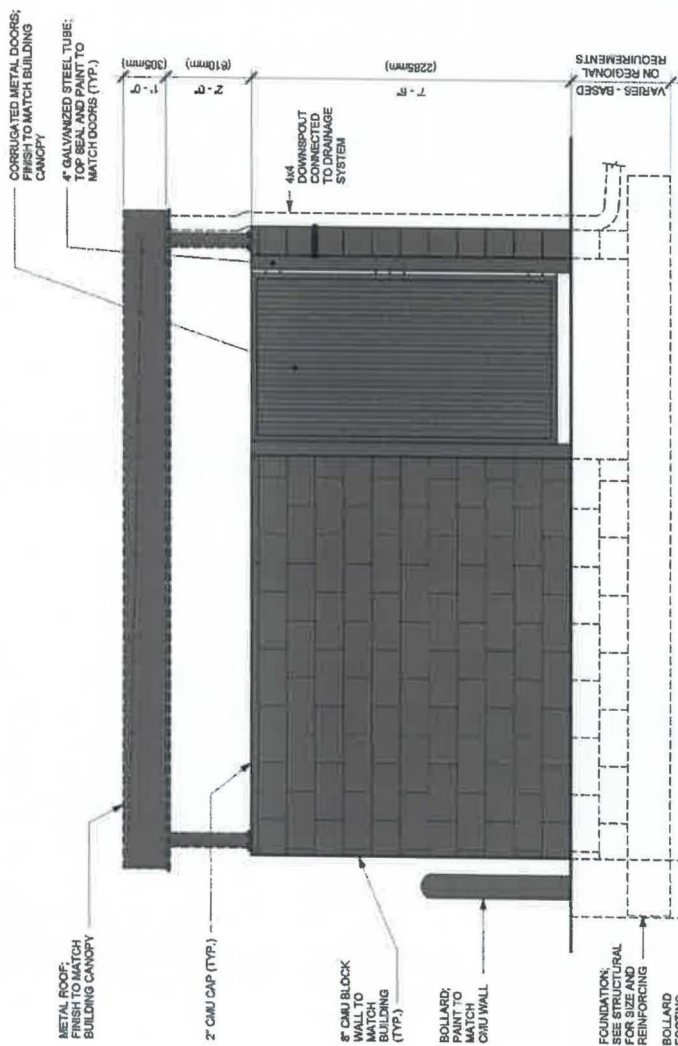


VARIES - BASED ON REGIONAL REQUIREMENTS

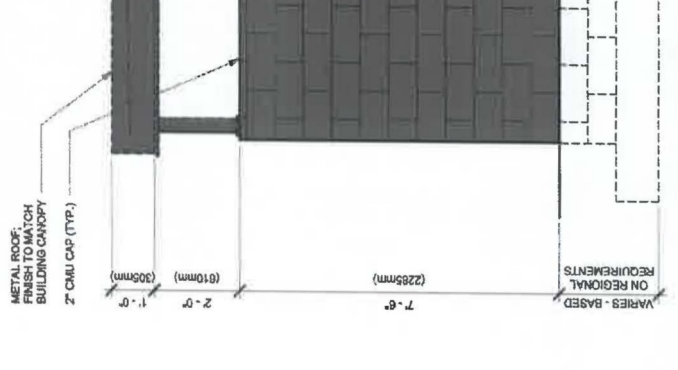
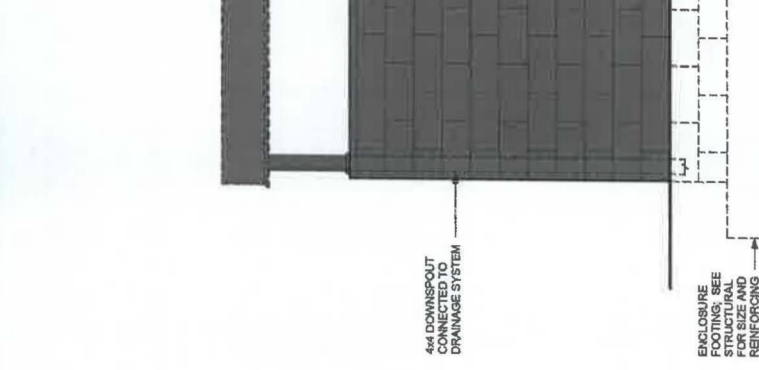
FOUNDATION SEE STRUCTURAL FOR SIZE AND REINFORCING BOLLARD FOOTING BEYOND, SEE BEYOND, SEE

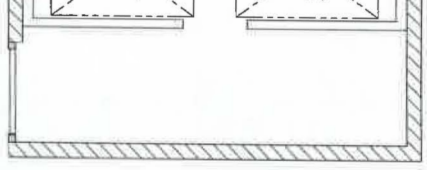


4 FRONT ELEVATION
SCALE: 1/2" = 1'-0"

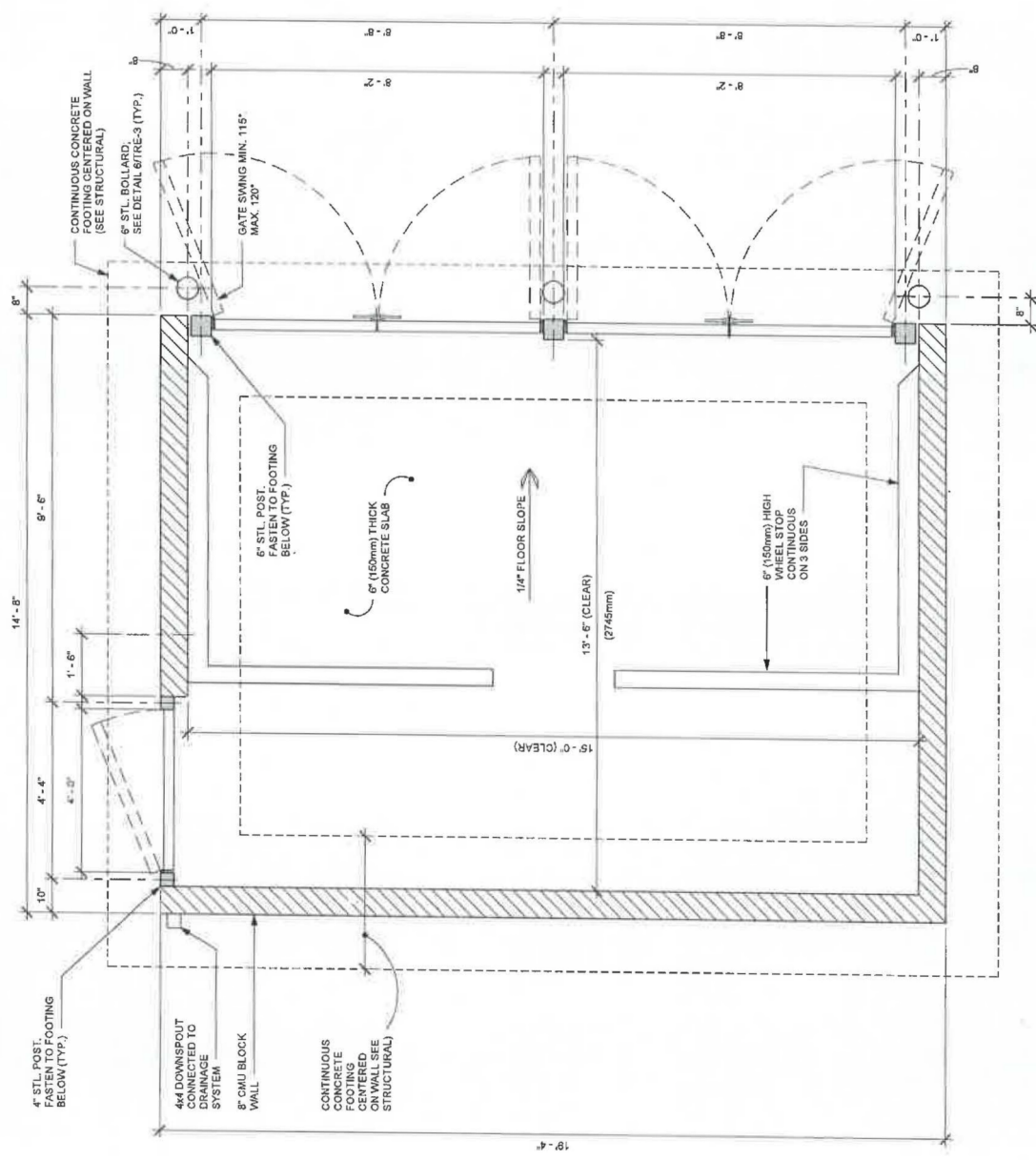
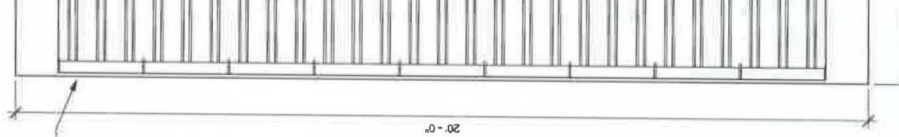


3 BACK ELEVATION
SCALE: 1/2" = 1'-0"





3 CONTAINER LAYO
SCALE: 1/4" = 1'-0"



4\"/>

4x4 DOWNSPOUT
CONNECTED TO
DRAINAGE
SYSTEM

8\"/>

CONTINUOUS
CONCRETE
FOOTING
CENTERED
ON WALL (SEE
STRUCTURAL)

6\"/>

6\"/>

1/4\"/>

13\"/>

6\"/>

CONTINUOUS CONCRETE
FOOTING CENTERED ON WALL
(SEE STRUCTURAL)

6\"/>

GATE SWING MIN. 115\"/>

6\"/>

1/4\"/>

6\"/>

24 GA
METAL
GUTTER
(BELOW)

20'-0"

19'-4"

8"

14'-8"

4'-4"

1'-6"

10"

8'-8"

9'-5"

1'-0"

8'-8"

1'-0"

8'-8"

1'-0"

8"

8"

8"

8"

8"

8"

8"

8"

8"

8"

8"

8"

8"

8"

8"

8"

8"

8"

8"

8"

8"

8"

8"

8"

8"

8"

8"

8"

8"

8"

8"

8"

8"

8"

8"

8"

8"

8"

8"

8"

8"

8"

8"

8"

8"

8"

8"

8"

8"

8"

8"

8"

8"

8"

8"

8"

8"

8"

8"

8"

8"

8"

8"

8"

8"

8"

8"

8"

8"

8"

8"

8"

8"

8"

8"

8"

8"

8"

8"

8"

8"

8"

8"

8"

8"

8"

8"

8"

8"

8"

8"

8"

8"

8"

8"

8"

8"

8"

8"

8"

8"

8"

8"

8"

8"

8"

8"

8"

8"

8"

8"

8"

8"

8"

8"

8"

8"

8"

8"

8"

8"

8"

8"

8"

8"

8"

8"

8"

8"

8"

8"

8"

8"

8"

8"

8"

8"

8"

8"

8"

8"

8"

8"

8"

8"

8"

8"

8"

8"

8"

8"

8"

8"

8"

8"

8"

8"

8"

8"

8"

8"

8"

8"

8"

8"

8"

8"

8"

8"

8"

8"

8"

8"

8"

8"

8"

8"

8"

8"

8"

8"

8"

8"

8"

8"

8"

8"

8"

8"

8"

8"

8"

8"

8"

8"

8"

8"

8"

8"

8"

8"

8"

8"

8"

8"

8"

8"

8"

8"

8"

8"

8"

8"

8"

8"

8"

8"

8"

8"

8"

8"

8"

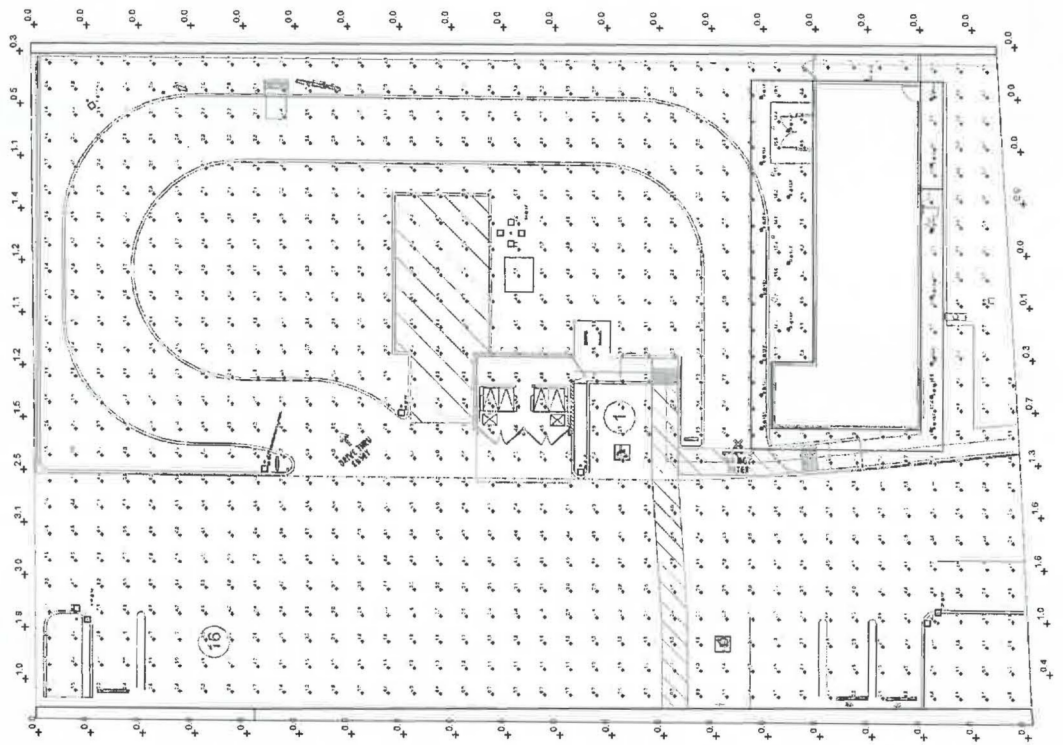
8"

8"

8"

Statistics

Description	Symbol	Avg	Max	Min
BLDG. EXIT ENTRANCE	+	10.9 fc	11.2 fc	10.6
GENERAL HARDSCAPE	+	3.8 fc	17.7 fc	0.4
BACK CORRIDOR	+	2.0 fc	2.2 fc	1.7



LDN6CYL

IP67
 5W
 30° beam angle
 20' throw distance

PHOTOMETRY



LDN6 35715 LUGAR, spot watts: 15.75, delivered lumens: 1572.9, LM/W = 87.6, spacing criterion at 10' = 1.02, foot candles: 307.87/25.5.



LDN6 35715 LUGAR, spot watts: 15.75, delivered lumens: 1572.9, LM/W = 87.6, spacing criterion at 10' = 1.02, foot candles: 307.87/25.5.



PHOTO VOLTAGE: 100 Lumen/ft² @ 10' (1000) 1000 Lumen/ft² @ 10' (10000) 10000 Lumen/ft² @ 10' (100000) 100000 Lumen/ft² @ 10' (1000000)

LITHONIA LIGHTING

FEATURES & SPECIFICATIONS

LED LIGHTING - High performance, long life, low energy consumption, low maintenance, and long life span. LED lighting is the most energy efficient lighting technology available today. Lithonia Lighting's LED lighting products are designed to provide the highest quality lighting solutions for your application. Lithonia Lighting's LED lighting products are designed to provide the highest quality lighting solutions for your application. Lithonia Lighting's LED lighting products are designed to provide the highest quality lighting solutions for your application.

LDN6CYL



6 CYLINDER
 5W
 30° beam angle
 20' throw distance

Model	Wattage	Beam Angle	Throw Distance	Beam Diameter	Foot Candles	LM/W
LDN6CYL	5W	30°	20'	2.0'	307.87	87.6

PHOTO VOLTAGE: 100 Lumen/ft² @ 10' (1000) 1000 Lumen/ft² @ 10' (10000) 10000 Lumen/ft² @ 10' (100000) 100000 Lumen/ft² @ 10' (1000000)

Accessories
 Lithonia Lighting offers a wide range of accessories for our LED lighting products. These accessories include mounting brackets, junction boxes, and more. For more information on our accessories, please visit our website at www.lithonia.com.



External Glass Shield (EGSS)

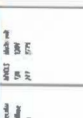


PHOTO VOLTAGE: 100 Lumen/ft² @ 10' (1000) 1000 Lumen/ft² @ 10' (10000) 10000 Lumen/ft² @ 10' (100000) 100000 Lumen/ft² @ 10' (1000000)

MOONLITE LED®
 Series MUE
 REV. 9. MUE.11.26.17



Mullion Mount Outdoor Emergency Egress Lighting

OVERVIEW
 Moonlite LED outdoor egress with both emergency lighting and night lighting function. The MUE Series is designed to mount directly on mullion frames used in typical glass panel entrance doors. The MUE Series provides uniform emergency and night lighting on the mullion frame. All models are available in 10W and 20W power options. The MUE Series is designed to provide uniform emergency and night lighting on the mullion frame. All models are available in 10W and 20W power options.

SPECIAL FEATURES

- Very low profile extruded aluminum housing and report localized bleed maintenance
- Selectable emergency and night lighting function
- Option for 20 watt module to operate for 2 hours in emergency mode
- Standard finishes include: Drafted/Aluminum, Satin White, Bronze or Black. Custom colors available on request.
- IP68 housing seals against heavy water spray and sea salt.
- Lifetime 50,000 hours (L70) life expectancy for all models.
- On-time on-time-on switch allows total control of night lighting function.
- Certified IP68 housing withstands wall direction water spray and fire rated ingress protection.
- Standard CE, ENEC, and UL listings.
- Code compliant emergency lighting layouts provided.

FEATURE ORDERING INFORMATION EXAMPLE: MUEB10A0F-010

Model	Power	Finish	Mounting	Beam Angle	Throw Distance	Beam Diameter	Foot Candles	LM/W
MUEB10A0F-010	10W	Aluminum	Direct	30°	20'	2.0'	307.87	87.6

PHOTO VOLTAGE: 100 Lumen/ft² @ 10' (1000) 1000 Lumen/ft² @ 10' (10000) 10000 Lumen/ft² @ 10' (100000) 100000 Lumen/ft² @ 10' (1000000)

PHOTOMETRY

Beam Spread Data at 20' Throw Distance

Distance (ft)	Beam Diameter (ft)
10	1.0
20	2.0
30	3.0
40	4.0
50	5.0
60	6.0
70	7.0
80	8.0
90	9.0
100	10.0

PHOTOMETRY

Beam Spread Data at 20' Throw Distance

Distance (ft)	Beam Diameter (ft)
10	1.0
20	2.0
30	3.0
40	4.0
50	5.0
60	6.0
70	7.0
80	8.0
90	9.0
100	10.0

PHOTO VOLTAGE: 100 Lumen/ft² @ 10' (1000) 1000 Lumen/ft² @ 10' (10000) 10000 Lumen/ft² @ 10' (100000) 100000 Lumen/ft² @ 10' (1000000)

PHOTOMETRY

Beam Spread Data at 20' Throw Distance

Distance (ft)	Beam Diameter (ft)
10	1.0
20	2.0
30	3.0
40	4.0
50	5.0
60	6.0
70	7.0
80	8.0
90	9.0
100	10.0

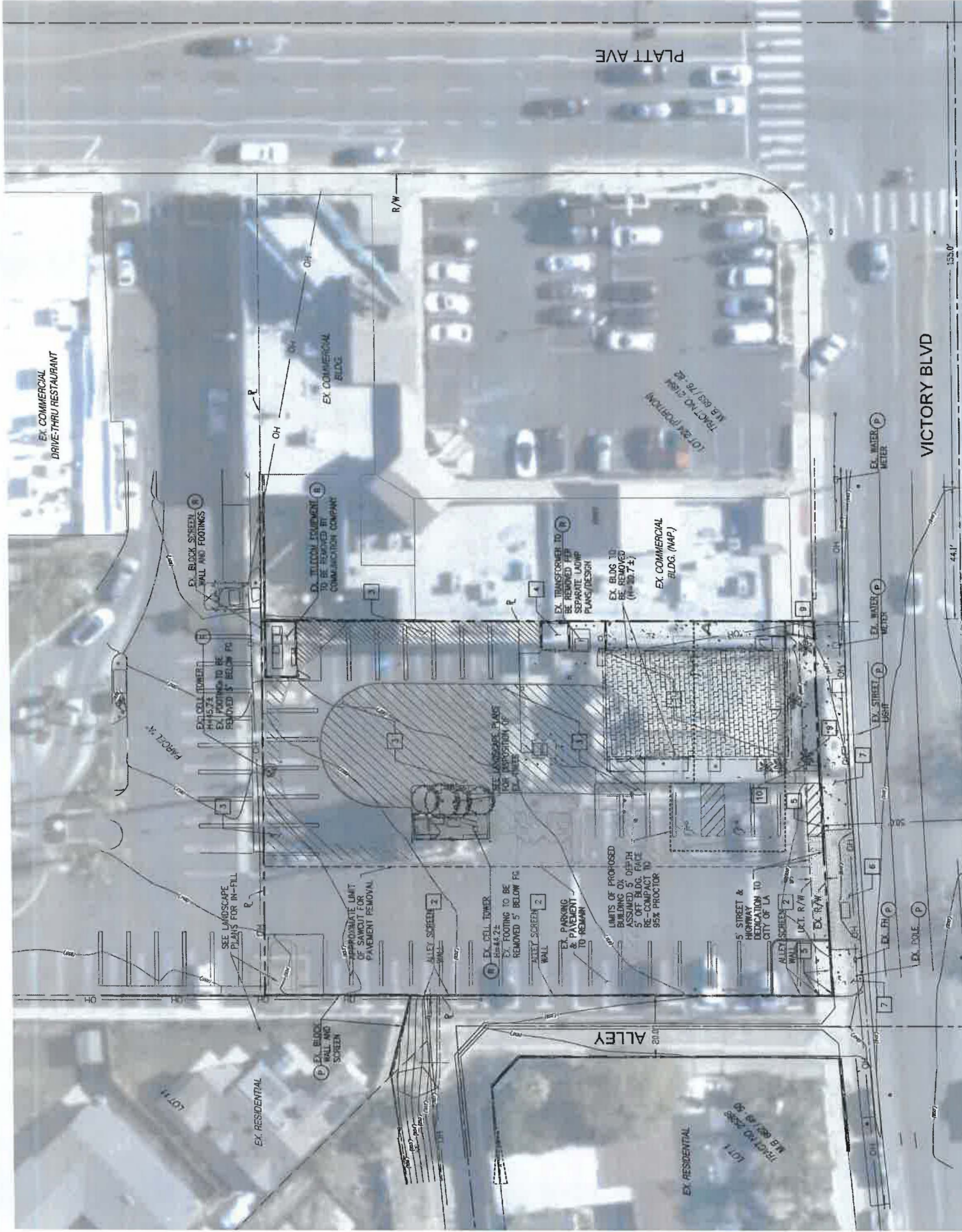
PHOTOMETRY

Beam Spread Data at 20' Throw Distance

Distance (ft)	Beam Diameter (ft)
10	1.0
20	2.0
30	3.0
40	4.0
50	5.0
60	6.0
70	7.0
80	8.0
90	9.0
100	10.0

PHOTO VOLTAGE: 100 Lumen/ft² @ 10' (1000) 1000 Lumen/ft² @ 10' (10000) 10000 Lumen/ft² @ 10' (100000) 100000 Lumen/ft² @ 10' (1000000)





EX COMMERCIAL
DRIVE-THRU RESTAURANT

EX COMMERCIAL
BLDG

PLATT AVE

VICTORY BLVD

EX RESIDENTIAL

EX RESIDENTIAL

EX. BLOCK SCREEN
WALL AND FOOTINGS

EX. TILLOM TOWER
TO BE REMOVED BY
COMMUNICATION COMPANY

EX TRANSFORMER TO
BE REMOVED WITH
SEPARATE LAMP
PLANS/DESIGN

EX BLDG TO
BE REMOVED
(#10-217.5)

EX COMMERCIAL
BLDG. (MAP)

EX. CELL TOWER
EX. FOOTING TO BE
REMOVED 5' BELOW FG

SEE LANDSCAPE PLANS
FOR DISPOSITION OF
EX. ASPHALT

SEE LANDSCAPE
PLANS FOR IN-FILL

APPROPRIATE LIMIT
OF SAWCUT FOR
PAVEMENT REMOVAL

EX. CELL TOWER
EX. FOOTING TO BE
REMOVED 5' BELOW FG

ALLEY SCREEN
WALL

EX. PARKING
& PAVEMENT
TO REMAIN

LIMITS OF PROPOSED
BUILDING OR DEPTH
5' OFF BLDG FACE
RE-COMPACT TO
95% PROCTOR

5' STREET &
HIGHWAY
DEDICATION TO
CITY OF LA

ALLEY SCREEN
WALL

EX. R/W

EX. STREET
LIGHT

EX. WATER
METER

EX. POLE

Parcel # 17090

TRACT NO. 188
100-207-101
100-207-102
100-207-103
100-207-104

TRACT NO. 188
100-207-101
100-207-102
100-207-103
100-207-104

135.0'

44.1'

100-207-101

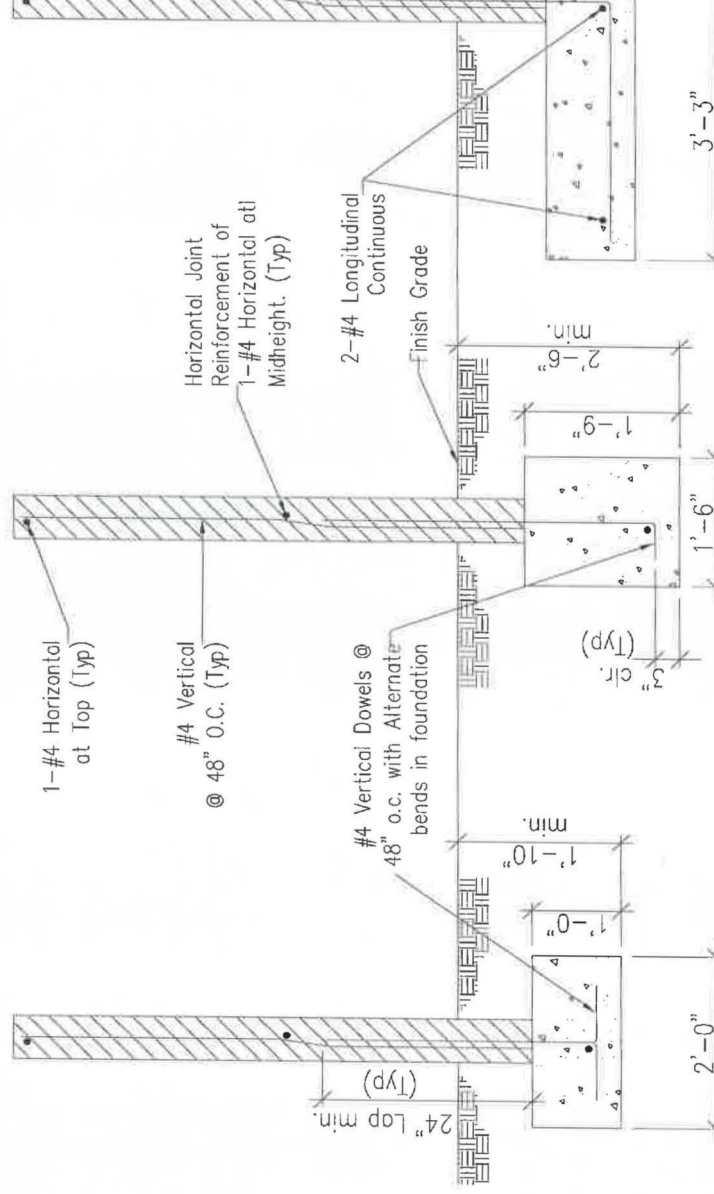
100-207-102

100-207-103

100-207-104



**6" CONCRETE BLOCK MASONRY WALL DETAIL
 (6'-0" HEIGHT MAXIMUM)**



GENERAL SPECIFICATIONS:

1. Concrete mix for footing to be 1 part cement to 2.5 parts sand to 3.5 parts gravel with a maximum of 7.5 gallons of water. Minimum $f_c = 2,500$ psi.
2. Concrete block units shall conform to ASTM C90.
3. Reinforcing steel to be deformed and conformed to ASTM Standard A615 Grade 40 or Grade 60.
4. Rebar shall be centered in the concrete block cell in which it is located.
5. Concrete block units shall be placed in a running band with head joints in successive courses horizontally offset at least one-half length.
6. Concrete block units to have vertical continuity of cells unobstructed. All cells containing reinforcing shall be solid grouted (no mortar). Cells not containing reinforcing shall not be grouted.
7. Mortar mix for concrete to be 1 part cement to 0.5 part lime to 3 parts damp loose sand.