

**BOARD OF  
ANIMAL SERVICES  
COMMISSIONERS**

ALISON McBETH-FEATHERSTONE  
PRESIDENT

OLIVIA E. GARCIA  
VICE PRESIDENT

COMMISSIONERS

ALEXANDER KASENDORF

THERESA SARDISCO

YVETTE SMITH

**City of Los Angeles**

CALIFORNIA



**KAREN BASS  
MAYOR**

**DEPARTMENT OF  
ANIMAL SERVICES**

221 N. Figueroa Street  
6<sup>TH</sup> Floor, Suite #600  
Los Angeles, CA 90012

(888) 452-7381  
FAX (213) 482-9511

ANNETTE G. RAMIREZ  
INTERIM GENERAL MANAGER

CURTIS R. WATTS  
ASSISTANT GENERAL MANAGER  
Administration

DR. JEREMY PRUPAS  
CHIEF VETERINARIAN

April 21, 2026

The Honorable Katy Yaroslavsky, Chair  
Budget and Finance Committee  
c/o Patrice Lattimore, City Clerk  
200 North Spring Street, Suite 440  
Los Angeles, CA 90012

Dear Councilmember Yaroslavsky:

**SUBJECT: DEPARTMENT OF ANIMAL SERVICES FISCAL YEAR 2026-27 PROPOSED BUDGET**

On behalf of the City of Los Angeles Department of Animal Services (Department), I would like to thank you for the opportunity to present the operational impacts of the Mayor's Fiscal Year 2026–2027 Proposed Budget. We also extend our sincere appreciation to the Mayor for the resources included in this proposal, recognizing the continued financial strain facing the City.

While we understand the difficult fiscal environment, the proposed budget presents several significant challenges that will directly impact the Department's ability to provide humane care, ensure public safety, and maintain effective operations.

Highest Priority Challenges

Our FY 2025-26 Adopted Budget provided half of the requested funding needed for the Department to continue its agreement with Dogs Playing For Life to provide animal enrichment services. The other half of the funding was generously provided by our partner, the American Society for the Prevention of Cruelty to Animals (ASPCA), so that the services would continue for the entire year. The FY 2026-27 Proposed Budget includes no funding to continue the Department's canine enrichment program agreement with Dogs Playing for Life. Without this program, dogs in our shelters will go for extended periods without exercise, other forms of enrichment, or opportunities for socialization. This lack of stimulation negatively affects their physical and behavioral health and ultimately decreases their adoptability, resulting in longer shelter stays and reduced positive outcomes. Lack of enrichment will also increase stress related behaviors which impacts dog bite risk to staff, volunteers and visitors.

Additionally, the FY 2025-26 Adopted Budget provided \$388,591 in the Department's Medical Supplies Account and \$200,000 in our Animal Food/Feed and Grain Account. The Proposed Budget completely eliminates funding for the Department's food account and reduces the medical account to less than \$50,000. These reductions significantly increase the Department's reliance on the Animal Welfare Trust Fund to cover basic animal care needs. As this fund is supported solely through donations, it is

"Creating a Humane LA"

**AN EQUAL OPPORTUNITY EMPLOYER**

Visit our website at [www.LAAnimalServices.com](http://www.LAAnimalServices.com)

not a sustainable or reliable long-term solution for funding the procurement of essential commodities such as food and medications for the animals in our care.

The Proposed Budget also eliminates one Animal Control Officer (ACO) position and one Animal Care Technician Supervisor position. This follows the elimination of seven ACO positions in the FY 2025–2026 budget and 12 ACOs in the FY 2024-25 budget. The Department currently has only 49 ACO position authorities to provide field enforcement services for a population of over four million residents. Any further reduction in these critical positions will severely limit our capacity to respond to daily service calls, emergencies, and public safety concerns.

The elimination of the Animal Care Technician Supervisor position at our Harbor Shelter is particularly impactful, as it leaves the facility with only one supervisor. This reduction diminishes operational oversight and places additional strain on remaining staff, potentially affecting both employee effectiveness and animal care standards.

Opportunities For Collaboration and Additional Operational Efficiencies

Despite these challenges, the Department remains committed to innovation and partnership. We are encouraged by opportunities to collaborate with two of our most trusted and long-standing nonprofit partners to introduce positions that will enhance shelter operations. These partnerships and the proposed additional positions aim to improve outcomes for animals while advancing consistency in shelter management and oversight.

Unfortunately, the Department does not have much to offer in terms of offsets. However, we appreciate your consideration of these impacts and look forward to working collaboratively to ensure that the Department can continue to meet its mission of caring for and protecting both animals and the communities we serve.

We look forward to discussing any of the matters raised here throughout the budget hearing procedures.

Respectfully submitted,



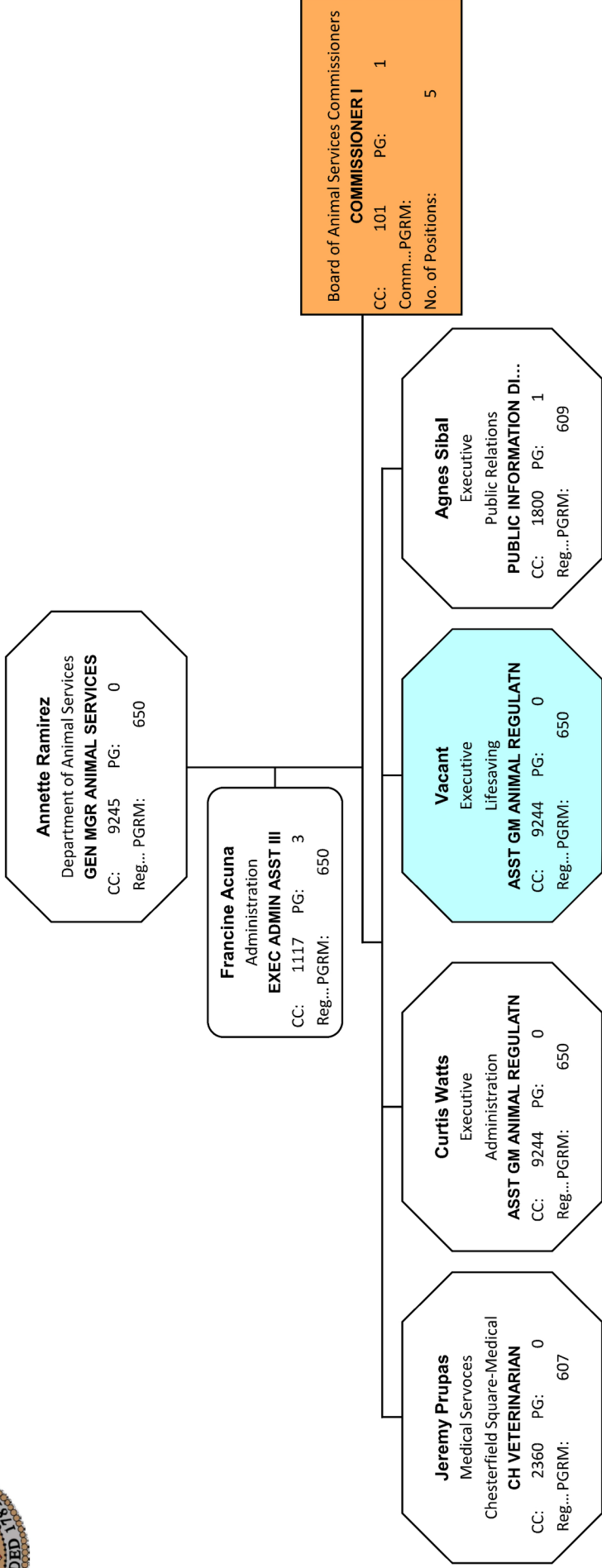
Annette Ramirez  
Interim General Manager

Attachment

- cc: Councilmember Bob Blumenfield, CD 3
- Councilmember Heather Hutt, CD 10
- Councilmember Tim McOsker, CD 15
- Councilmember Eunisses Hernandez, CD 1
- Matt Hale, Deputy Mayor, Mayor's Office of Finance, Operations and Innovation
- Elyse Matson, Budget Director, Mayor's Office of Finance, Operations and Innovation
- Matthew Szabo, City Administrative Officer
- Jacqueline Reyes, Office of the CAO



# Department of Animal Services FY 2025-26 ADOPTED BUDGET ORGANIZATIONAL CHART



**Legend**  
 Sky Blue = VACANT Positions  
 Light Orange = MULTIPLE Positions  
 Yellow = NEW Positions  
 \* = Pay Grade / Reallocation

Supervisor

Assistant

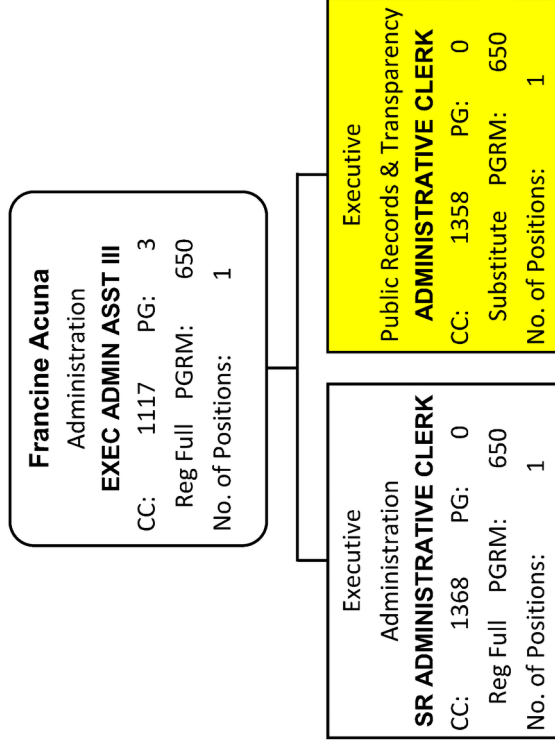
Staff

Directs, plans, organizes, and manages all activities of the Department and its employees; builds and maintains an effective work force; fulfills affirmative action responsibilities.



# Department of Animal Services

## FY 2025-26 ADOPTED BUDGET ORGANIZATIONAL CHART



Provides administrative support to General Manager Animal Services and the Board of Animal Services Commissioners.

Provides administrative support to Executive Administrative Assistants.

Receives and processes California Public Records Act requests.

- Legend**
- Sky Blue = VACANT Positions
  - Light Orange = MULTIPLE Positions
  - Yellow = NEW Positions
  - \* = Pay Grade / Reallocation

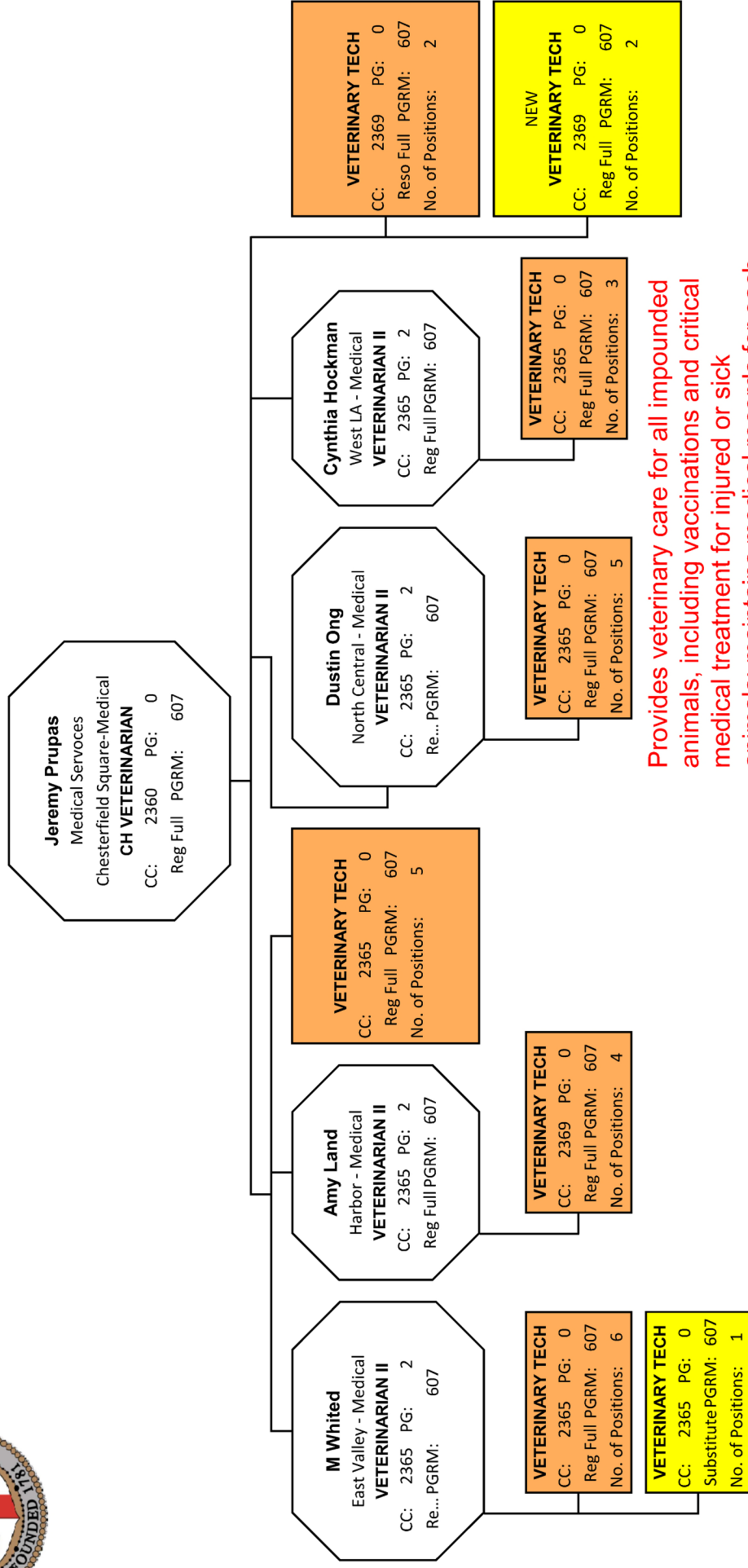
Supervisor

Assistant

Staff



# Department of Animal Services FY 2025-26 ADOPTED BUDGET ORGANIZATIONAL CHART



**Provides veterinary care for all impounded animals, including vaccinations and critical medical treatment for injured or sick animals; maintains medical records for each animal processed through the City's shelters; provides or facilitates sterilization of shelter animals through in-house staff or contracted on-site and off-site clinics and veterinarians; examines and processes animals in support of animal cruelty cases; testifies in court regarding animal medical conditions; and euthanizes animals to relieve irremediable suffering of animals.**

**Legend**  
 Sky Blue = VACANT Positions  
 Light Orange = MULTIPLE Positions  
 Yellow = NEW Positions  
 \* = Pay Grade / Reallocation

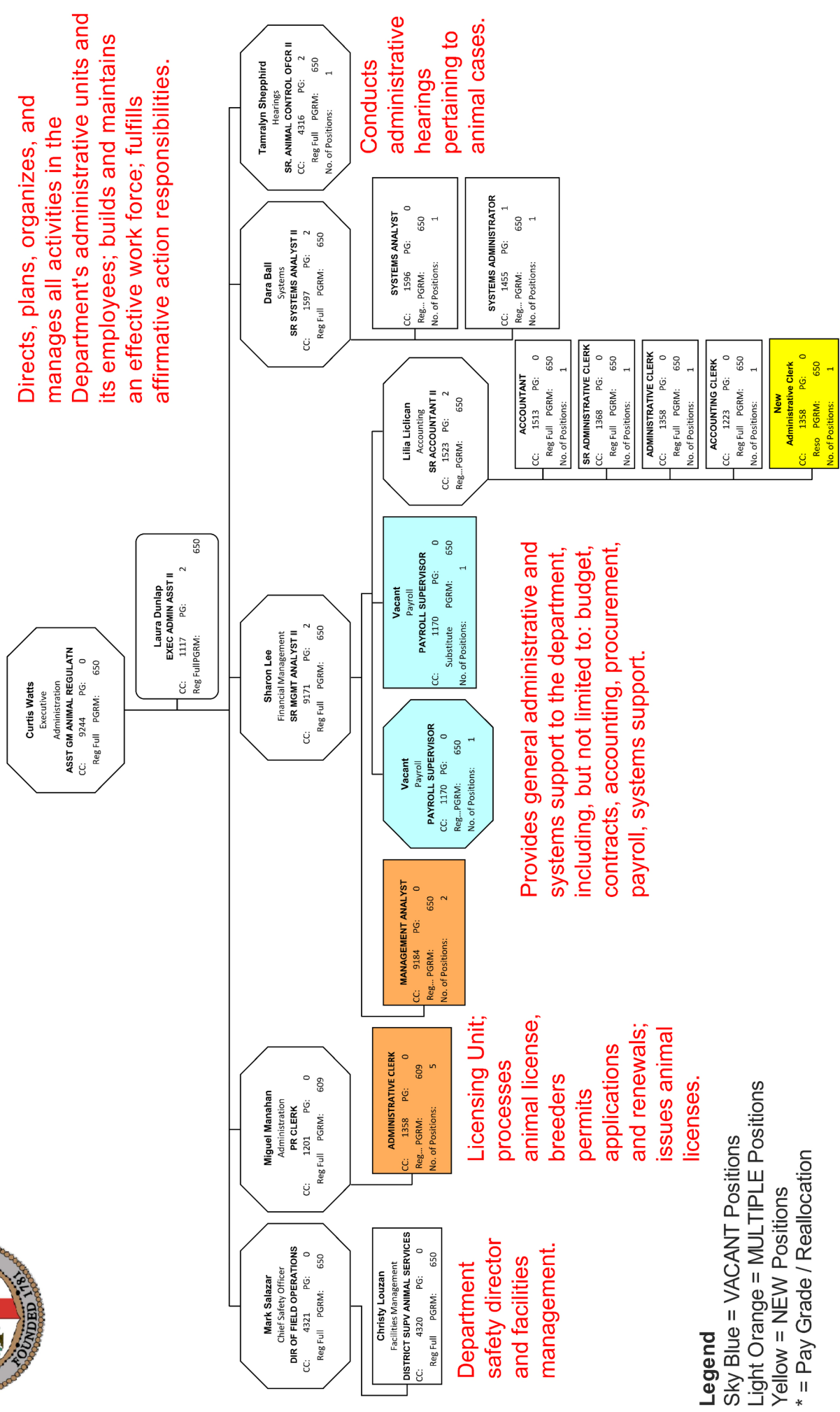
Supervisor

Assistant

Staff



# Department of Animal Services FY 2025-26 ADOPTED BUDGET ORGANIZATIONAL CHART



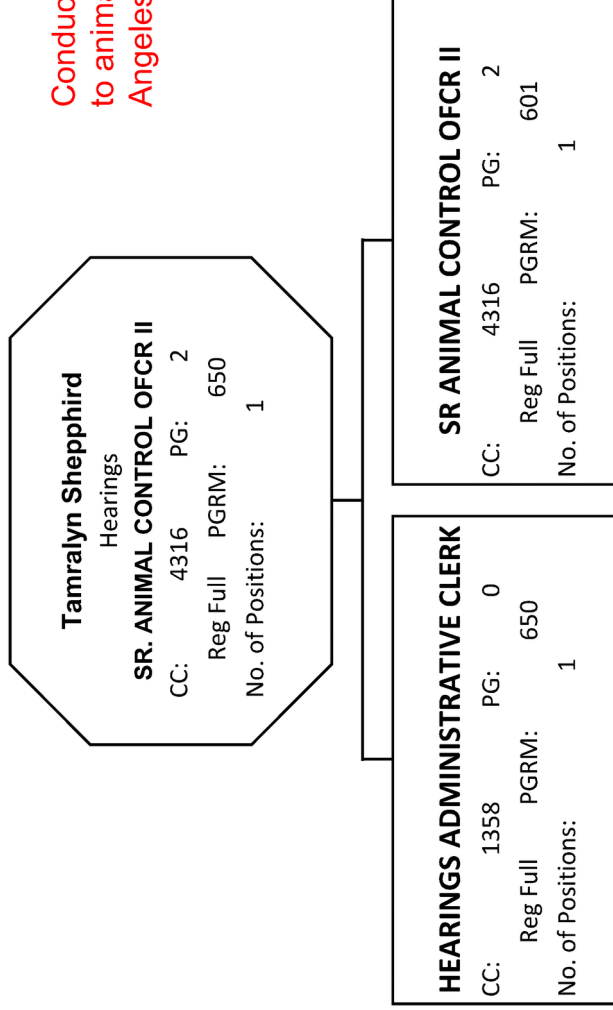
**Legend**  
 Sky Blue = VACANT Positions  
 Light Orange = MULTIPLE Positions  
 Yellow = NEW Positions  
 \* = Pay Grade / Reallocation





# Department of Animal Services

## FY 2025-26 ADOPTED BUDGET ORGANIZATIONAL CHART



Conducts administrative hearings pertaining to animal cases in accordance with the Los Angeles Municipal Code.

- Legend**
- Sky Blue = VACANT Positions
  - Light Orange = MULTIPLE Positions
  - Yellow = NEW Positions
  - \* = Pay Grade / Reallocation

Supervisor

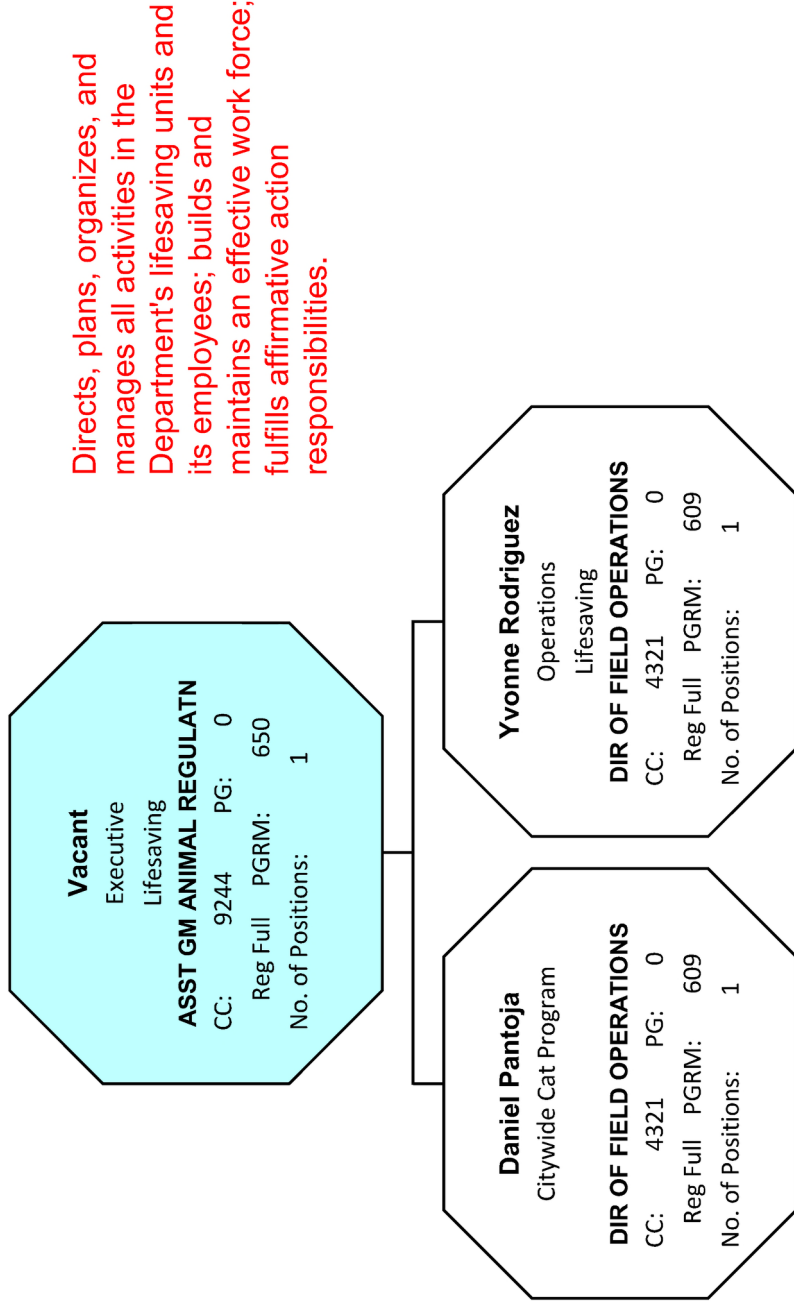
Assistant

Staff



# Department of Animal Services

## FY 2025-26 ADOPTED BUDGET ORGANIZATIONAL CHART



- Legend**
- Sky Blue = VACANT Positions
  - Light Orange = MULTIPLE Positions
  - Yellow = NEW Positions
  - \* = Pay Grade / Reallocation

Supervisor

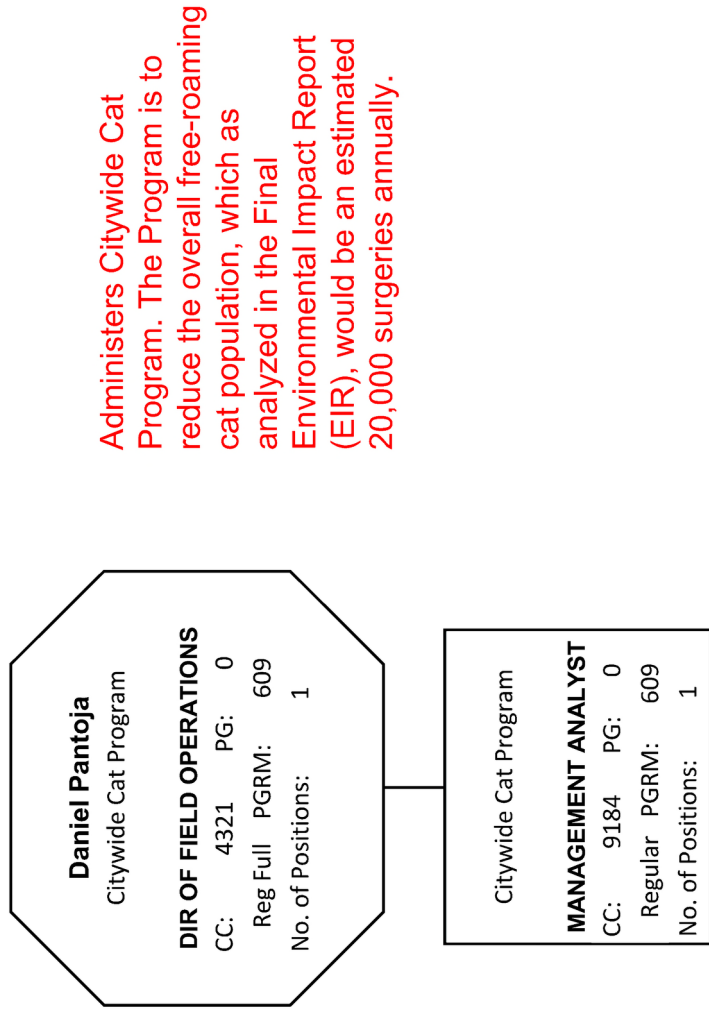
Assistant

Staff



# Department of Animal Services

## FY 2025-26 ADOPTED BUDGET ORGANIZATIONAL CHART



Administers Citywide Cat Program. The Program is to reduce the overall free-roaming cat population, which as analyzed in the Final Environmental Impact Report (EIR), would be an estimated 20,000 surgeries annually.

- Legend**
- Sky Blue = VACANT Positions
  - Light Orange = MULTIPLE Positions
  - Yellow = NEW Positions
  - \* = Pay Grade / Reallocation

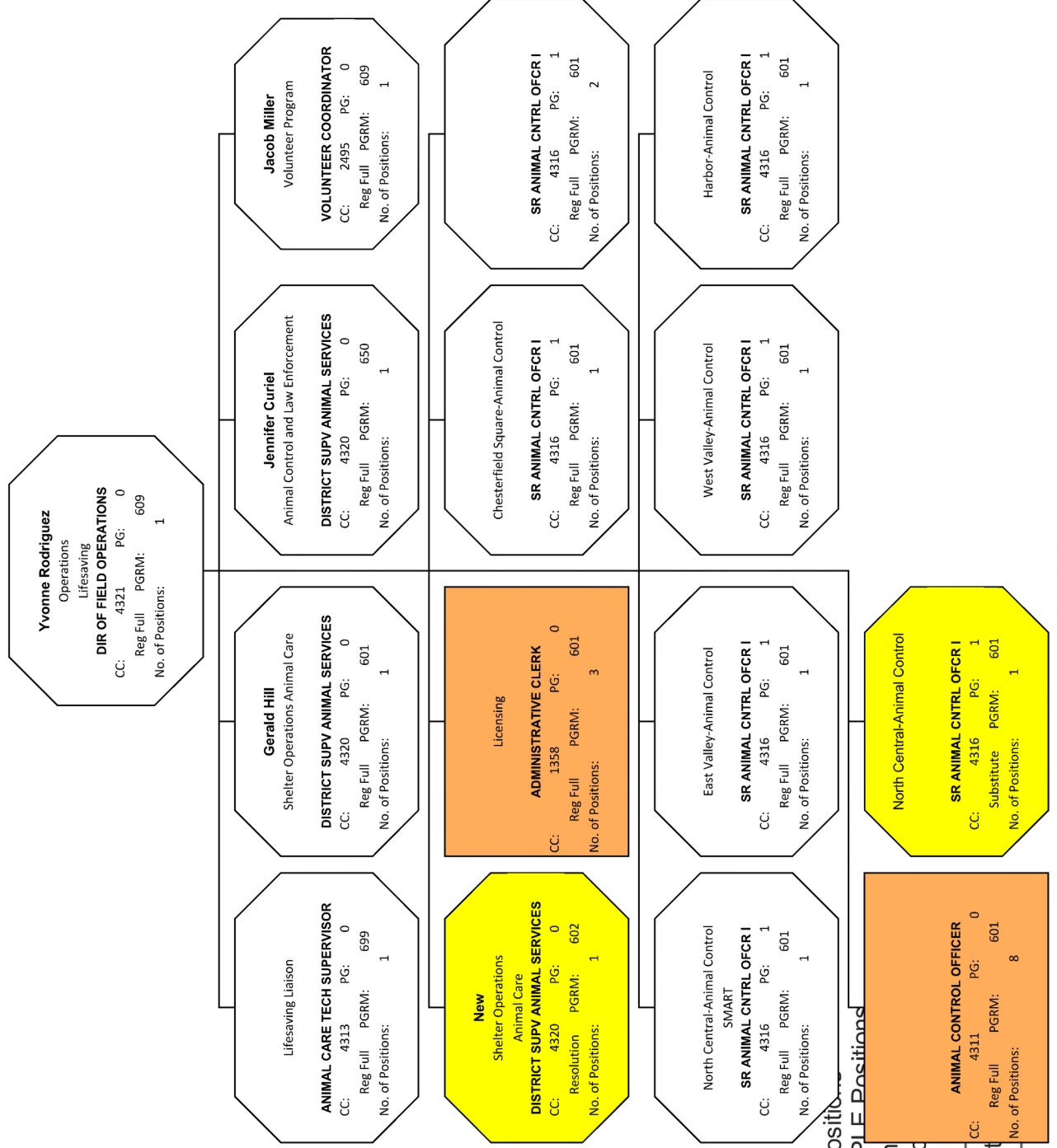
Supervisor

Assistant

Staff



# Department of Animal Services FY 2025-26 ADOPTED BUDGET ORGANIZATIONAL CHART



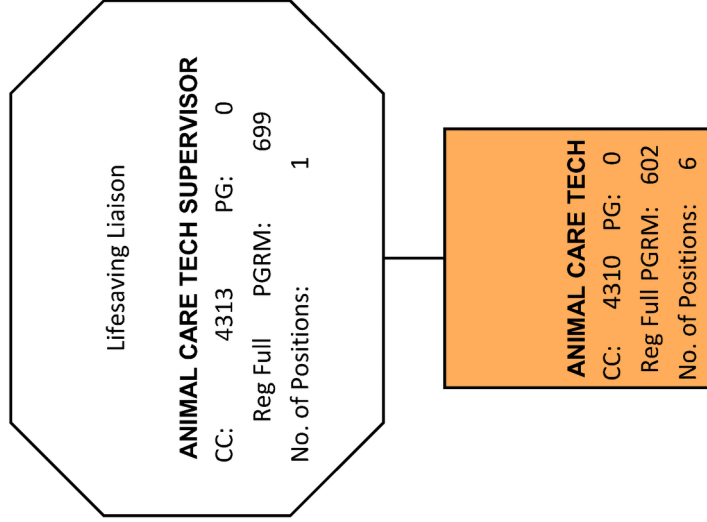
**Legend**  
 Sky Blue = VACANT Position  
 Light Orange = MULTIPLE Positions  
 Yellow = NEW Position  
 \* = Pay Grade / Realloc

Supervisor

Assist



**Department of Animal Services**  
**FY 2025-26 ADOPTED BUDGET ORGANIZATIONAL CHART**



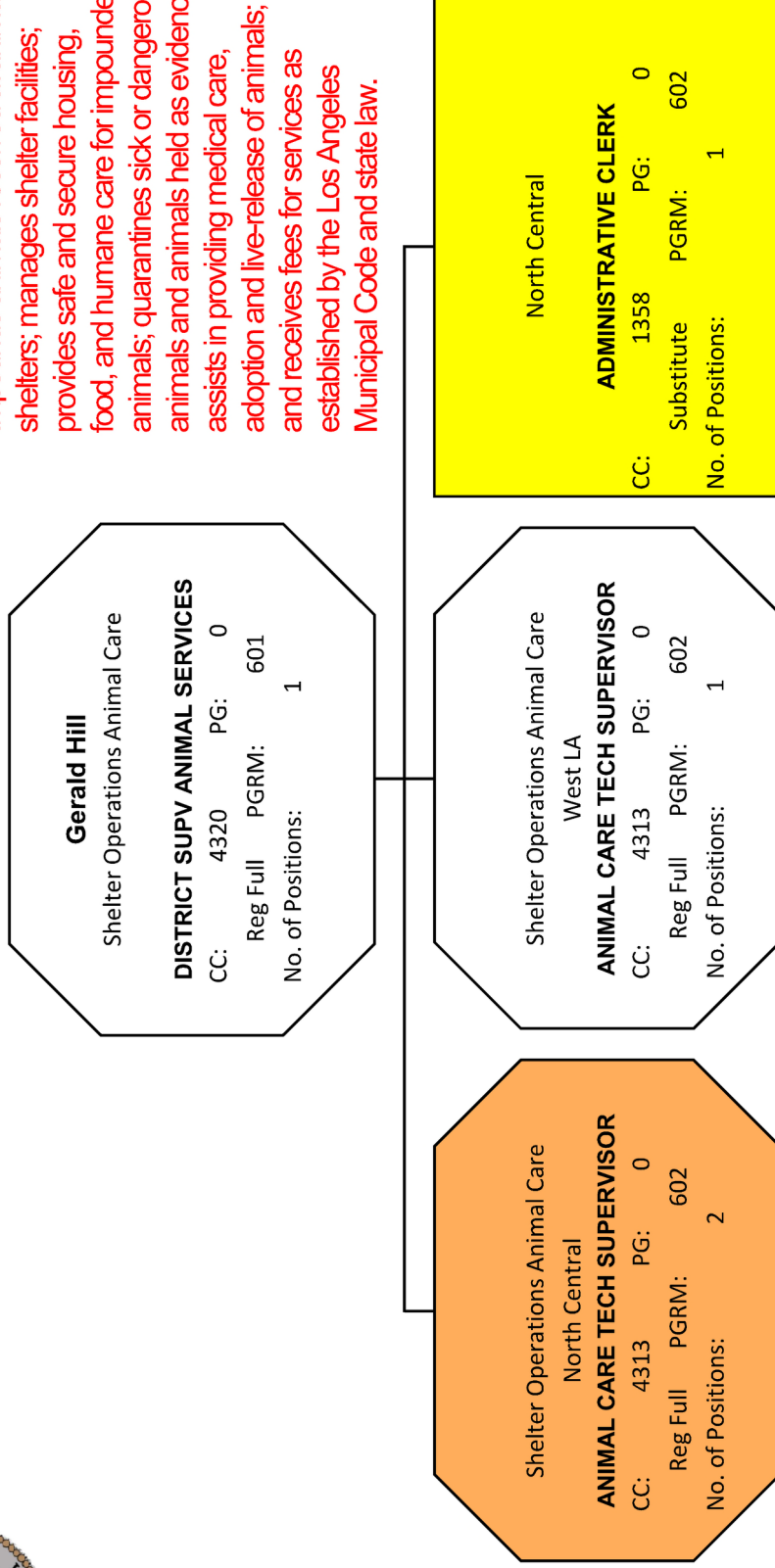
**Legend**  
 Sky Blue = VACANT Positions  
 Light Orange = MULTIPLE Positions  
 Yellow = NEW Positions  
 \* = Pay Grade / Reallocation

Supervisor (Octagon)    Assistant (Rounded Rectangle)    Staff (Rectangle)



# Department of Animal Services FY 2025-26 ADOPTED BUDGET ORGANIZATIONAL CHART

Impounds animals received at animal shelters; manages shelter facilities; provides safe and secure housing, food, and humane care for impounded animals; quarantines sick or dangerous animals and animals held as evidence; assists in providing medical care, adoption and live-release of animals; and receives fees for services as established by the Los Angeles Municipal Code and state law.



**Legend**  
 Sky Blue = VACANT Positions  
 Light Orange = MULTIPLE Positions  
 Yellow = NEW Positions  
 \* = Pay Grade / Reallocation

Supervisor

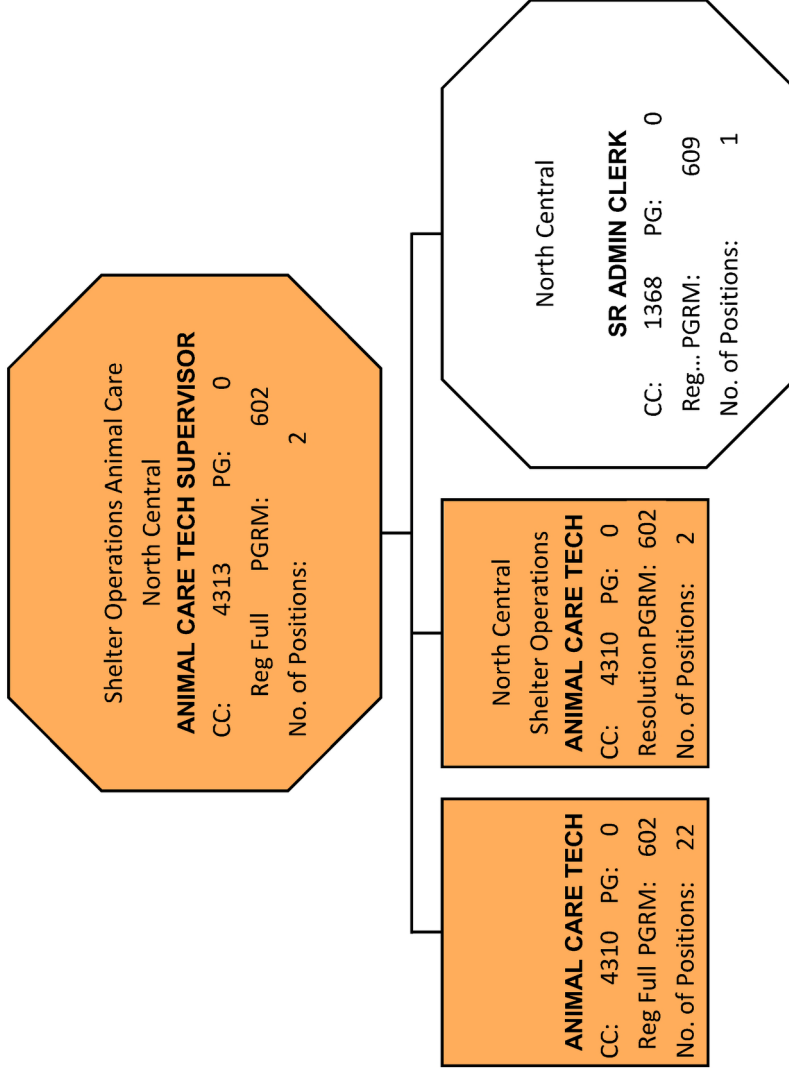
Assistant

Staff



# Department of Animal Services

## FY 2025-26 ADOPTED BUDGET ORGANIZATIONAL CHART

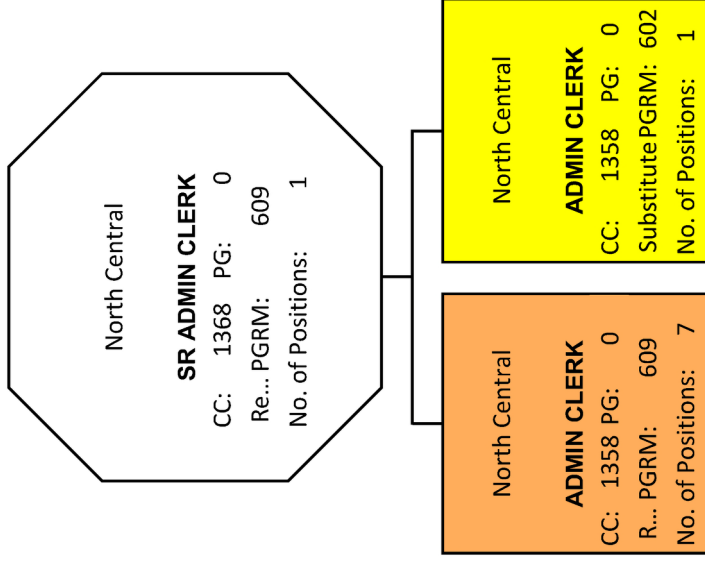


**Legend**  
 Sky Blue = VACANT Positions  
 Light Orange = MULTIPLE Positions  
 Yellow = NEW Positions  
 \* = Pay Grade / Reallocation

|            |           |       |
|------------|-----------|-------|
| Supervisor | Assistant | Staff |
|------------|-----------|-------|



**Department of Animal Services**  
**FY 2025-26 ADOPTED BUDGET ORGANIZATIONAL CHART**

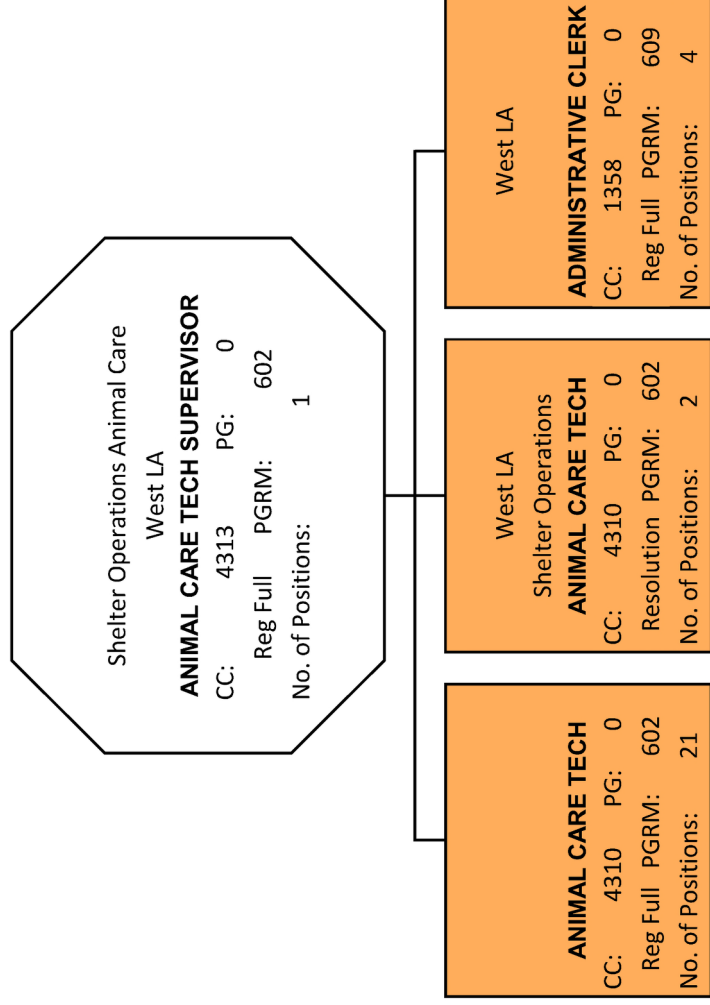


**Legend**  
 Sky Blue = VACANT Positions  
 Light Orange = MULTIPLE Positions  
 Yellow = NEW Positions  
 \* = Pay Grade / Reallocation

Supervisor
Assistant
Staff



**Department of Animal Services**  
**FY 2025-26 ADOPTED BUDGET ORGANIZATIONAL CHART**



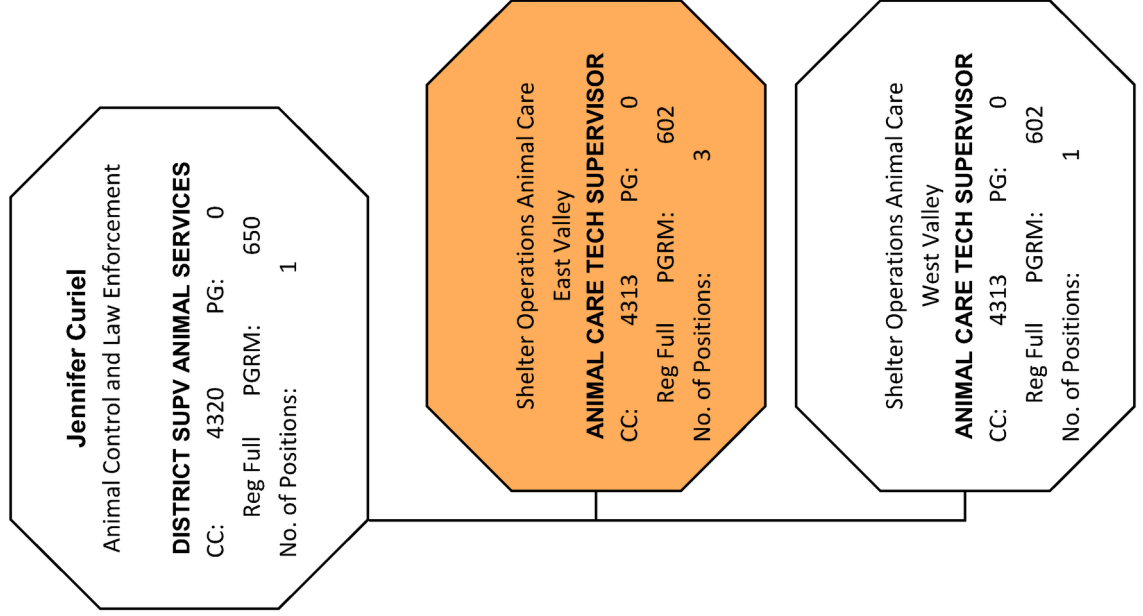
**Legend**  
 Sky Blue = VACANT Positions  
 Light Orange = MULTIPLE Positions  
 Yellow = NEW Positions  
 \* = Pay Grade / Reallocation

|            |           |       |
|------------|-----------|-------|
| Supervisor | Assistant | Staff |
|------------|-----------|-------|



# Department of Animal Services FY 2025-26 ADOPTED BUDGET ORGANIZATIONAL CHART

Impounds animals received at animal shelters; manages shelter facilities; provides safe and secure housing, food, and humane care for impounded animals; quarantines sick or dangerous animals and animals held as evidence; assists in providing medical care, adoption and live-release of animals; and receives fees for services as established by the Los Angeles Municipal Code and state law.



**Legend**  
 Sky Blue = VACANT Positions  
 Light Orange = MULTIPLE Positions  
 Yellow = NEW Positions  
 \* = Pay Grade / Reallocation

Supervisor

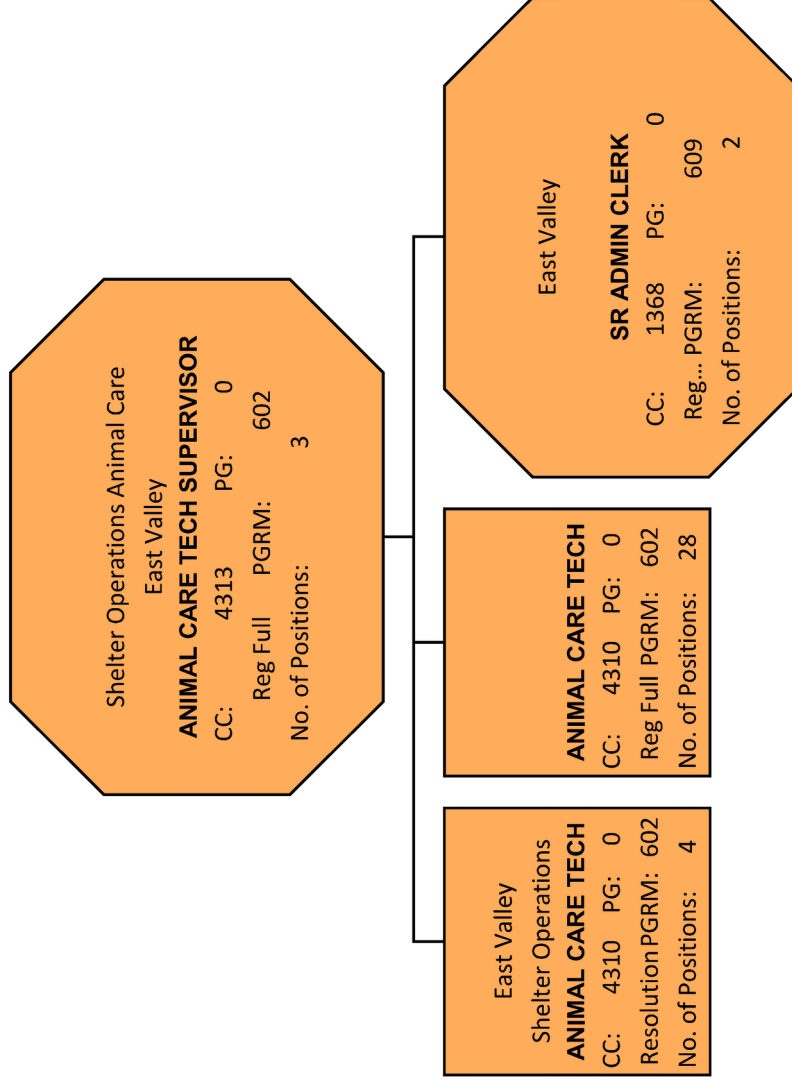
Assistant

Staff



# Department of Animal Services

## FY 2025-26 ADOPTED BUDGET ORGANIZATIONAL CHART

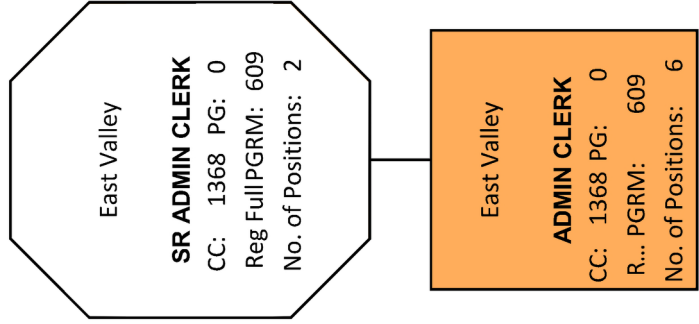


**Legend**  
 Sky Blue = VACANT Positions  
 Light Orange = MULTIPLE Positions  
 Yellow = NEW Positions  
 \* = Pay Grade / Reallocation

|            |           |       |
|------------|-----------|-------|
| Supervisor | Assistant | Staff |
|------------|-----------|-------|



# Department of Animal Services FY 2025-26 ADOPTED BUDGET ORGANIZATIONAL CHART



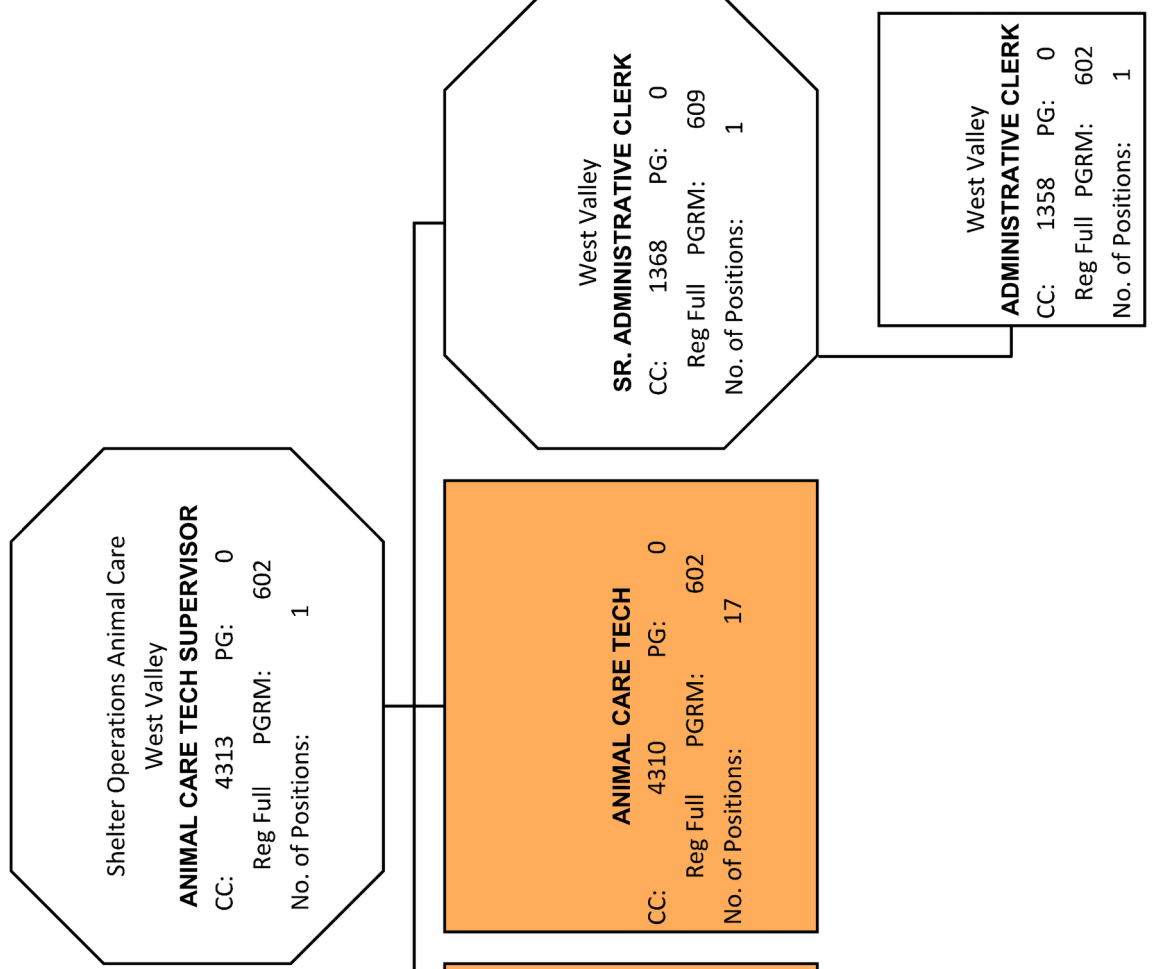
**Legend**  
Sky Blue = VACANT Positions  
Light Orange = MULTIPLE Positions  
Yellow = NEW Positions  
\* = Pay Grade / Reallocation

Supervisor Assistant Staff



# Department of Animal Services

## FY 2025-26 ADOPTED BUDGET ORGANIZATIONAL CHART



**Legend**

- Sky Blue = VACANT Positions
- Light Orange = MULTIPLE Positions
- Yellow = NEW Positions
- \* = Pay Grade / Reallocation

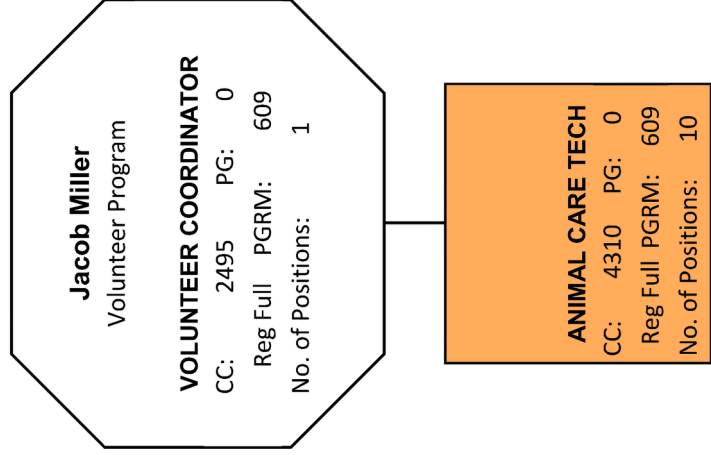
Supervisor

Assistant

Staff



# Department of Animal Services FY 2025-26 ADOPTED BUDGET ORGANIZATIONAL CHART



Designs the Volunteer Program to coordinate the appropriate number of volunteers at each shelter and in shifts.

- Legend**  
 Sky Blue = VACANT Positions  
 Light Orange = MULTIPLE Positions  
 Yellow = NEW Positions  
 \* = Pay Grade / Reallocation

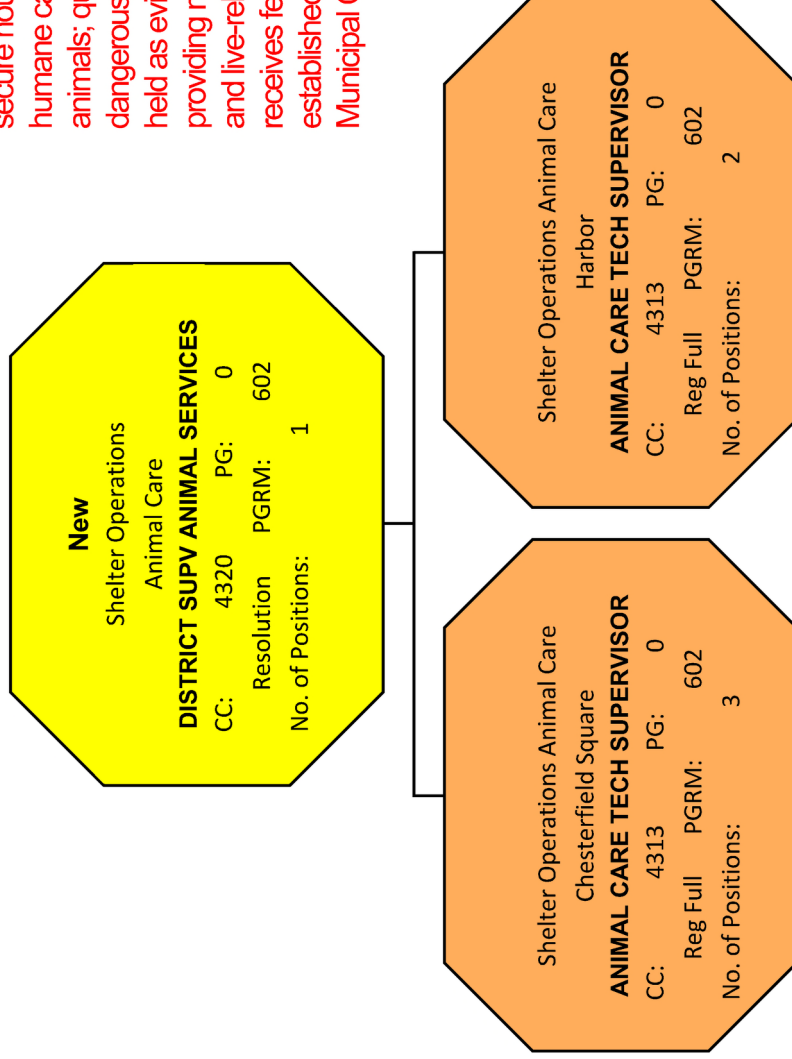
Supervisor Assistant Staff



# Department of Animal Services

## FY 2025-26 ADOPTED BUDGET ORGANIZATIONAL CHART

Impounds animals received at animal shelters; manages shelter facilities; provides safe and secure housing, food, and humane care for impounded animals; quarantines sick or dangerous animals and animals held as evidence; assists in providing medical care, adoption and live-release of animals; and receives fees for services as established by the Los Angeles Municipal Code and state law.



**Legend**  
 Sky Blue = VACANT Positions  
 Light Orange = MULTIPLE Positions  
 Yellow = NEW Positions  
 \* = Pay Grade / Reallocation

Supervisor

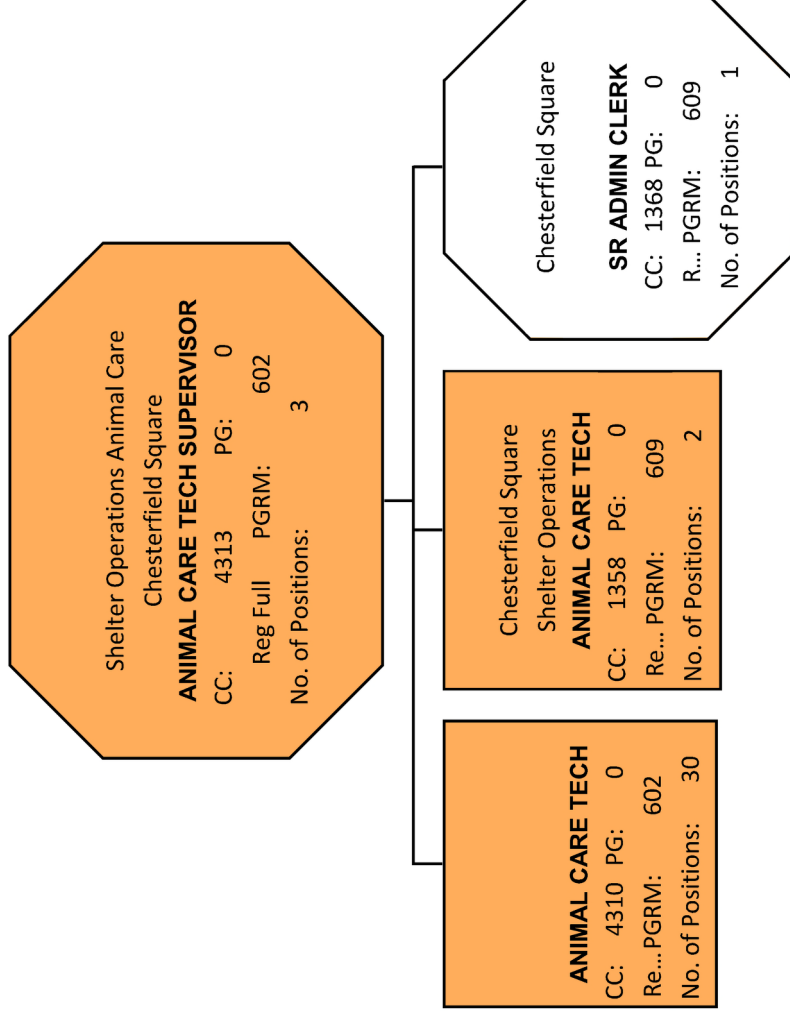
Assistant

Staff



# Department of Animal Services

## FY 2025-26 ADOPTED BUDGET ORGANIZATIONAL CHART

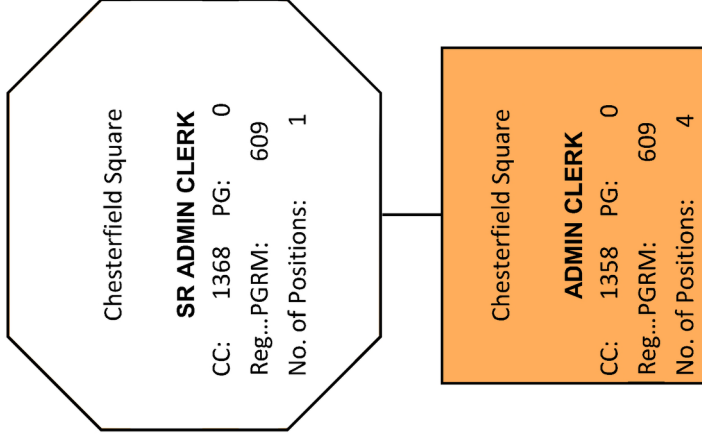


**Legend**  
 Sky Blue = VACANT Positions  
 Light Orange = MULTIPLE Positions  
 Yellow = NEW Positions  
 \* = Pay Grade / Reallocation

|            |           |       |
|------------|-----------|-------|
| Supervisor | Assistant | Staff |
|------------|-----------|-------|



Department of Animal Services  
FY 2025-26 ADOPTED BUDGET ORGANIZATIONAL CHART



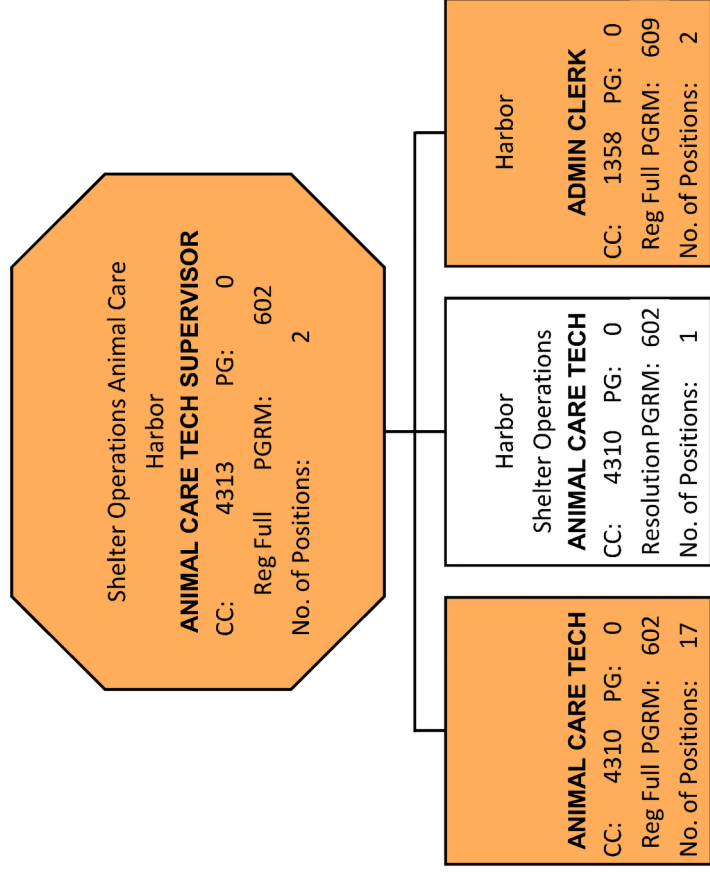
- Legend**  
 Sky Blue = VACANT Positions  
 Light Orange = MULTIPLE Positions  
 Yellow = NEW Positions  
 \* = Pay Grade / Reallocation

Supervisor Assistant Staff



# Department of Animal Services

## FY 2025-26 ADOPTED BUDGET ORGANIZATIONAL CHART

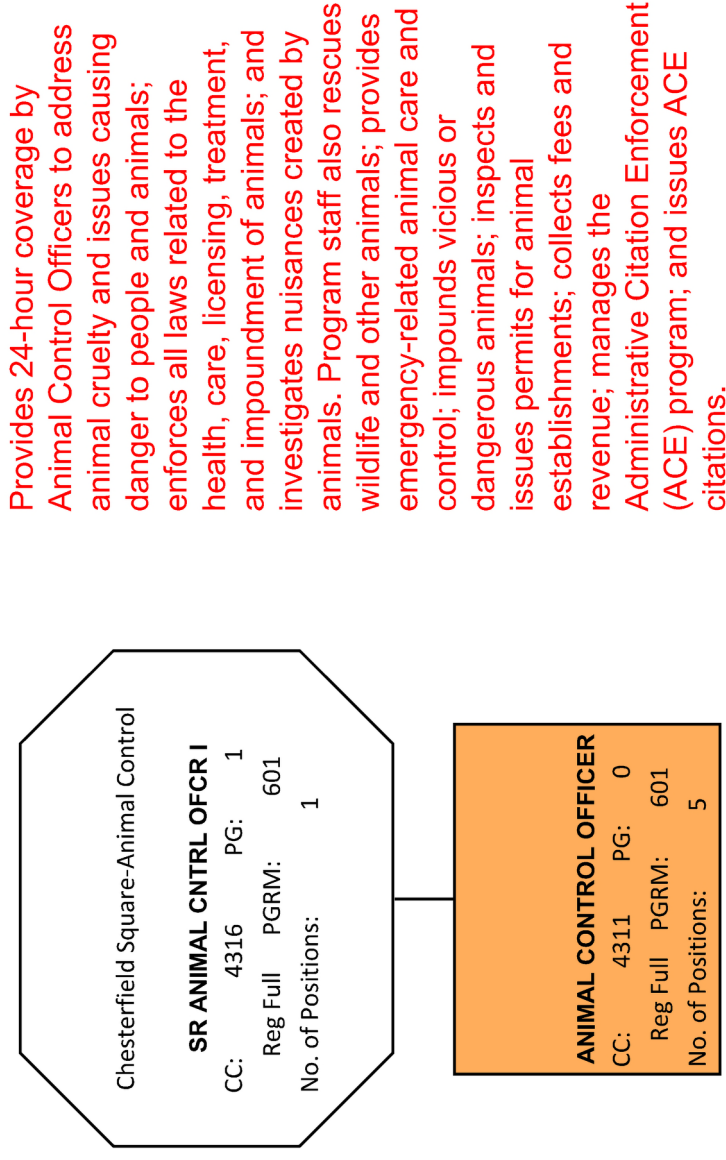


- Legend**
- Sky Blue = VACANT Positions
  - Light Orange = MULTIPLE Positions
  - Yellow = NEW Positions
  - \* = Pay Grade / Reallocation

|            |           |       |
|------------|-----------|-------|
| Supervisor | Assistant | Staff |
|------------|-----------|-------|



# Department of Animal Services FY 2025-26 ADOPTED BUDGET ORGANIZATIONAL CHART



Provides 24-hour coverage by Animal Control Officers to address animal cruelty and issues causing danger to people and animals; enforces all laws related to the health, care, licensing, treatment, and impoundment of animals; and investigates nuisances created by animals. Program staff also rescues wildlife and other animals; provides emergency-related animal care and control; impounds vicious or dangerous animals; inspects and issues permits for animal establishments; collects fees and revenue; manages the Administrative Citation Enforcement (ACE) program; and issues ACE citations.

- Legend**  
 Sky Blue = VACANT Positions  
 Light Orange = MULTIPLE Positions  
 Yellow = NEW Positions  
 \* = Pay Grade / Reallocation

Supervisor

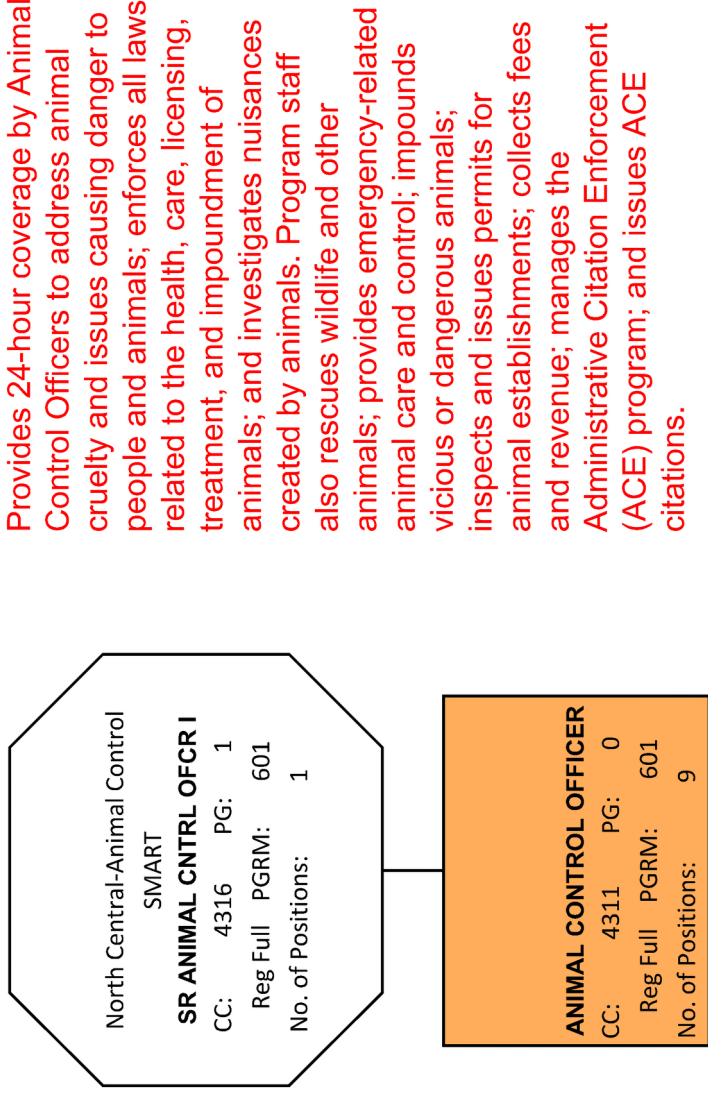
Assistant

Staff



# Department of Animal Services

## FY 2025-26 ADOPTED BUDGET ORGANIZATIONAL CHART



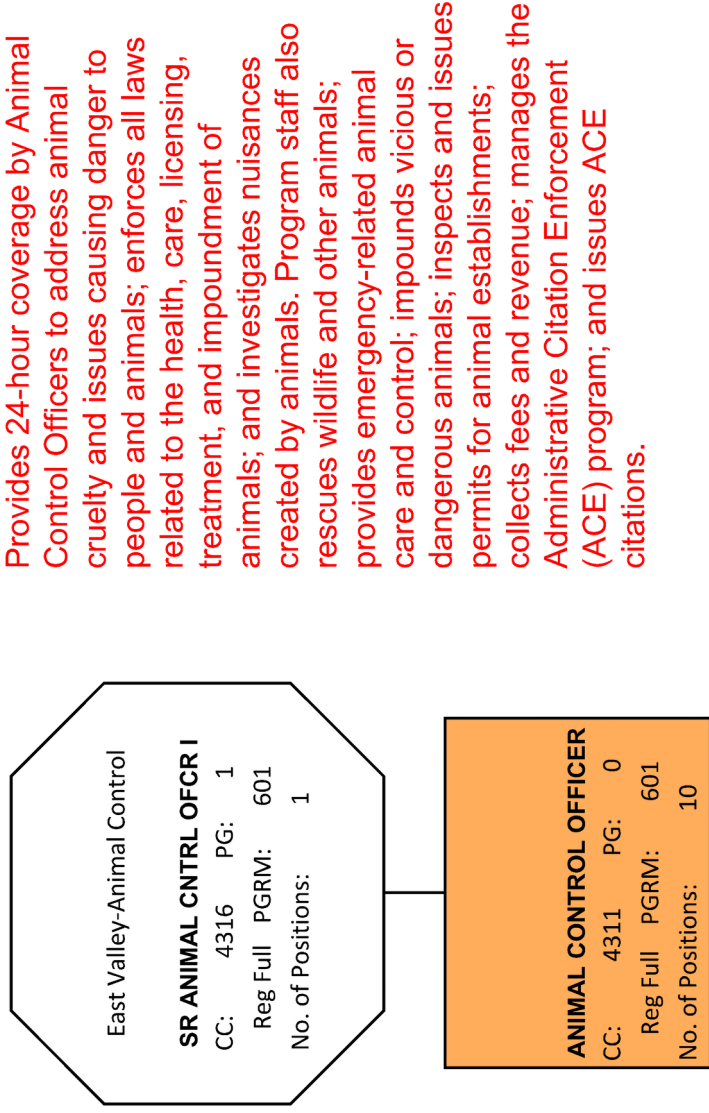
Provides 24-hour coverage by Animal Control Officers to address animal cruelty and issues causing danger to people and animals; enforces all laws related to the health, care, licensing, treatment, and impoundment of animals; and investigates nuisances created by animals. Program staff also rescues wildlife and other animals; provides emergency-related animal care and control; impounds vicious or dangerous animals; inspects and issues permits for animal establishments; collects fees and revenue; manages the Administrative Citation Enforcement (ACE) program; and issues ACE citations.

**Legend**  
 Sky Blue = VACANT Positions  
 Light Orange = MULTIPLE Positions  
 Yellow = NEW Positions  
 \* = Pay Grade / Reallocation

|            |           |       |
|------------|-----------|-------|
| Supervisor | Assistant | Staff |
|------------|-----------|-------|



# Department of Animal Services FY 2025-26 ADOPTED BUDGET ORGANIZATIONAL CHART



Provides 24-hour coverage by Animal Control Officers to address animal cruelty and issues causing danger to people and animals; enforces all laws related to the health, care, licensing, treatment, and impoundment of animals; and investigates nuisances created by animals. Program staff also rescues wildlife and other animals; provides emergency-related animal care and control; impounds vicious or dangerous animals; inspects and issues permits for animal establishments; collects fees and revenue; manages the Administrative Citation Enforcement (ACE) program; and issues ACE citations.

- Legend**  
 Sky Blue = VACANT Positions  
 Light Orange = MULTIPLE Positions  
 Yellow = NEW Positions  
 \* = Pay Grade / Reallocation

Supervisor

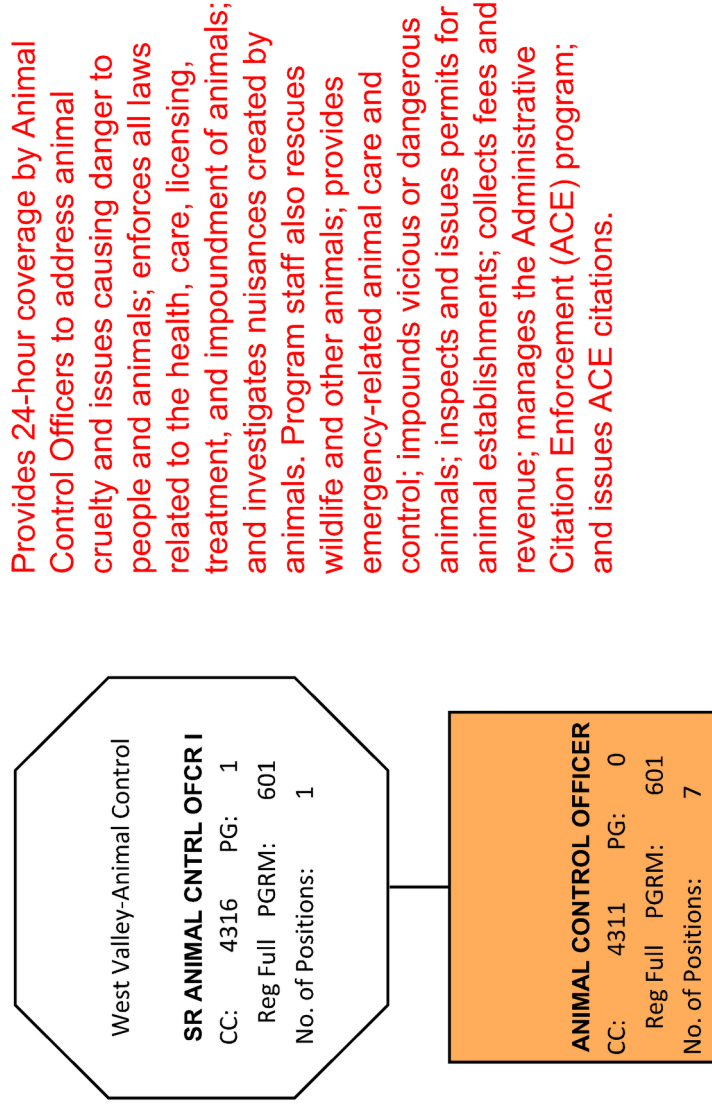
Assistant

Staff



# Department of Animal Services

## FY 2025-26 ADOPTED BUDGET ORGANIZATIONAL CHART



Provides 24-hour coverage by Animal Control Officers to address animal cruelty and issues causing danger to people and animals; enforces all laws related to the health, care, licensing, treatment, and impoundment of animals; and investigates nuisances created by animals. Program staff also rescues wildlife and other animals; provides emergency-related animal care and control; impounds vicious or dangerous animals; inspects and issues permits for animal establishments; collects fees and revenue; manages the Administrative Citation Enforcement (ACE) program; and issues ACE citations.

- Legend**
- Sky Blue = VACANT Positions
  - Light Orange = MULTIPLE Positions
  - Yellow = NEW Positions
  - \* = Pay Grade / Reallocation

Supervisor

Assistant

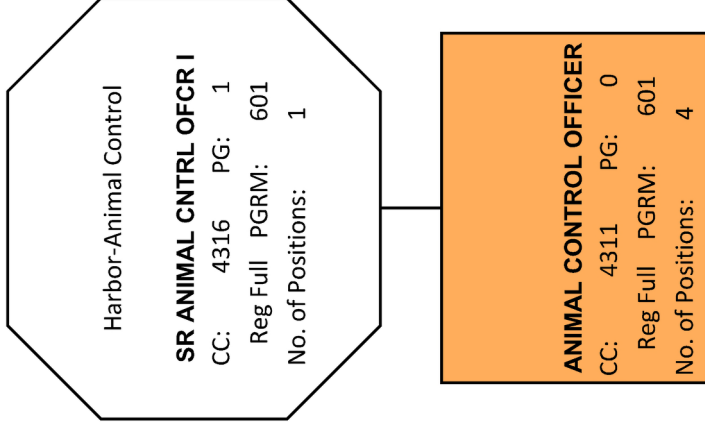
Staff



# Department of Animal Services

## FY 2025-26 ADOPTED BUDGET ORGANIZATIONAL CHART

Provides 24-hour coverage by Animal Control Officers to address animal cruelty and issues causing danger to people and animals; enforces all laws related to the health, care, licensing, treatment, and impoundment of animals; and investigates nuisances created by animals. Program staff also rescues wildlife and other animals; provides emergency-related animal care and control; impounds vicious or dangerous animals; inspects and issues permits for animal establishments; collects fees and revenue; manages the Administrative Citation Enforcement (ACE) program; and issues ACE citations.



**Legend**  
 Sky Blue = VACANT Positions  
 Light Orange = MULTIPLE Positions  
 Yellow = NEW Positions  
 \* = Pay Grade / Reallocation

Supervisor

Assistant

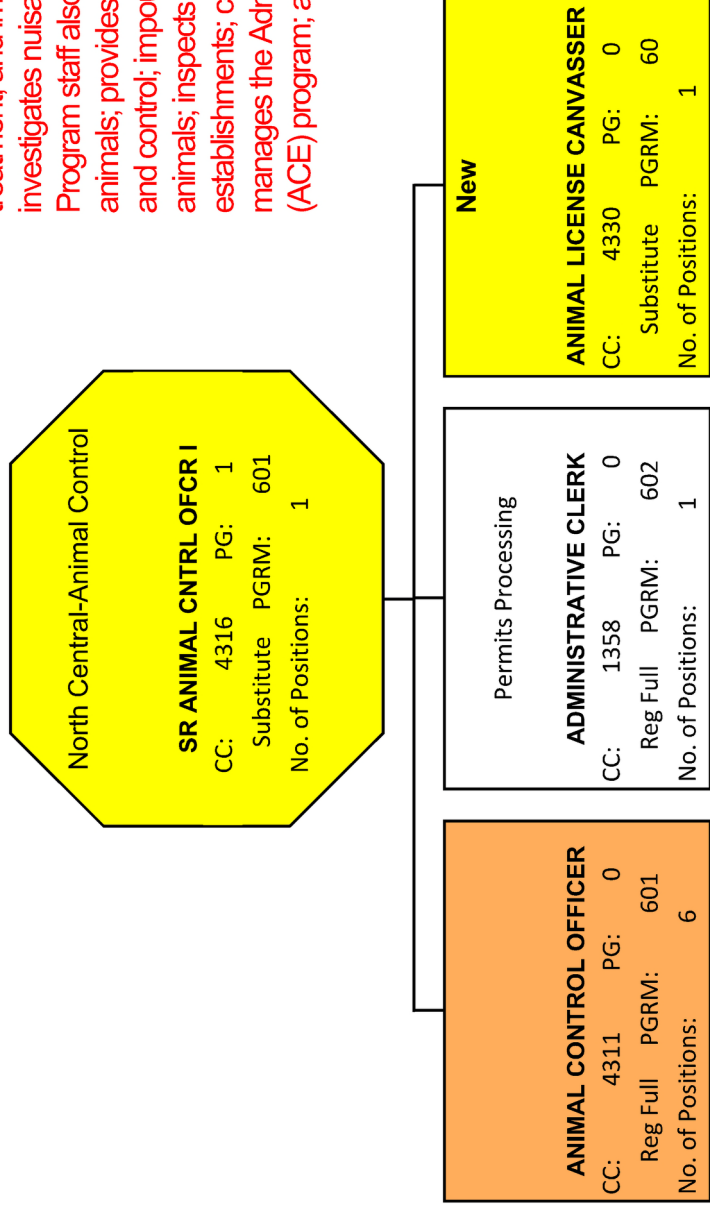
Staff



# Department of Animal Services

## FY 2025-26 ADOPTED BUDGET ORGANIZATIONAL CHART

Provides 24-hour coverage by Animal Control Officers to address animal cruelty and issues causing danger to people and animals; enforces all laws related to the health, care, licensing, treatment, and impoundment of animals; and investigates nuisances created by animals. Program staff also rescues wildlife and other animals; provides emergency-related animal care and control; impounds vicious or dangerous animals; inspects and issues permits for animal establishments; collects fees and revenue; manages the Administrative Citation Enforcement (ACE) program; and issues ACE citations.



**Legend**  
 Sky Blue = VACANT Positions  
 Light Orange = MULTIPLE Positions  
 Yellow = NEW Positions  
 \* = Pay Grade / Reallocation

Supervisor

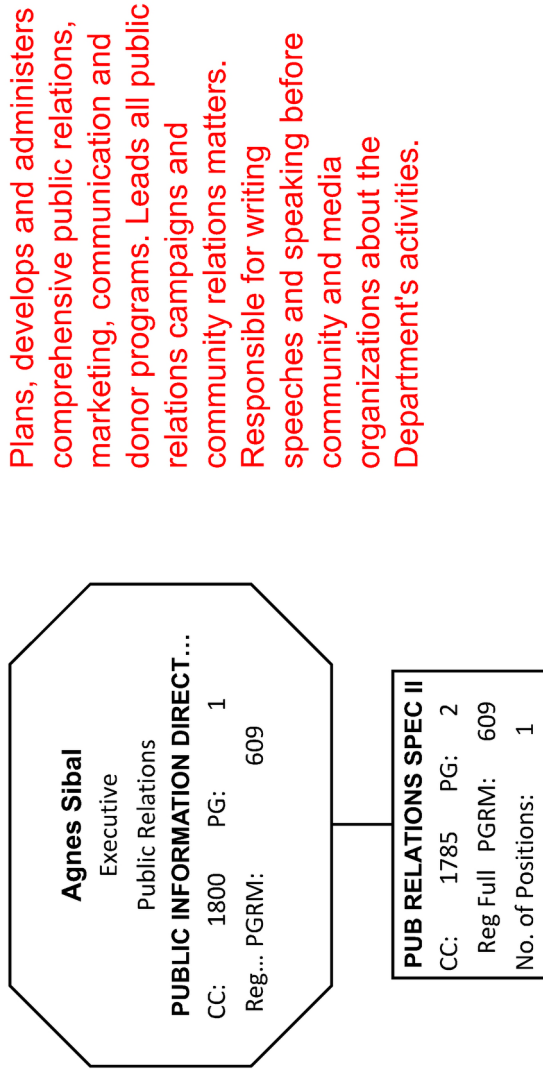
Assistant

Staff



# Department of Animal Services

## FY 2025-26 ADOPTED BUDGET ORGANIZATIONAL CHART



**Legend**  
 Sky Blue = VACANT Positions  
 Light Orange = MULTIPLE Positions  
 Yellow = NEW Positions  
 \* = Pay Grade / Reallocation

|            |           |       |
|------------|-----------|-------|
| Supervisor | Assistant | Staff |
|------------|-----------|-------|