

**BOARD OF PUBLIC WORKS
MEMBERS**

STEVE S. KANG
PRESIDENT

JENNY CHAVEZ
VICE PRESIDENT

JOHN GRANT
PRESIDENT PRO TEMPORE

FAITH I. MITCHELL
COMMISSIONER

ERNESTO CARDENAS
COMMISSIONER

ELYSE MATSON
EXECUTIVE OFFICER

CITY OF LOS ANGELES

CALIFORNIA



KAREN BASS
MAYOR

**DEPARTMENT OF
PUBLIC WORKS
BUREAU OF
ENGINEERING**

ALFRED MATA, PE
INTERIM CITY ENGINEER

1149 S. BROADWAY, SUITE 700
LOS ANGELES, CA 90015-2213

<http://engineering.lacity.gov>

April 21, 2026

Honorable Members of the Budget and Finance Committee
c/o Patrice Lattimore, City Clerk
Office of the City Clerk
Room 360, City Hall

BUREAU OF ENGINEERING FISCAL YEAR 2026-2027 PROPOSED BUDGET

Dear Chair Yaroslavsky and Honorable Members:

The Bureau of Engineering (Engineering) appreciates the opportunity to provide input on the Mayor's 2026-27 Proposed Budget. The Proposed Budget provides for stable service levels overall and makes several substantial investments in key initiatives. As requested, this letter shares budget highlights and offers a limited number of recommended changes to streamline bureau operations.

Budget Highlights and Changes for FY 2026-27

The Proposed Budget would maintain service levels in Engineering's core functions. With limited exceptions, all of Engineering's continuation packages were approved. The Proposed Budget discontinues administrative positions supporting the delivery of homeless facility projects and the building decarbonization program. Engineering is evaluating the workload in these programs to determine if there will be any impacts from these position cuts.

The Proposed Budget makes notable investments in mobility project delivery for the 2028 Olympic and Paralympic Games, including six critical engineering positions for design and construction management of transportation projects. These positions will primarily support delivery of LADOT-led grant projects that improve mobility near Games venues. The Proposed Budget also makes a generational investment in the citywide Public Right of Way Inventory and Assessment led by Engineering and in close partnership with LADOT and BSS. This work will be foundational for development of a comprehensive Capital Improvement Program under Executive Directive 9. Engineering recently provided a comprehensive report to the City Council on this initiative under CF 25-1142.



Requested Changes to Position Authorities

Priority #1: Engineering has pursued a multi-year reorganization of its internal administrative functions in order to streamline processes, strengthen cross-training of administrative classifications, and improve service consistency across programs. In FY 2024-25, the City Council approved the first step toward this reorganization with the creation of a Chief Financial Officer and a new Financial Management Division. The next phase of our administrative services consolidation requires realignment of seven positions (add/deletes) to ensure that the new division has the appropriate supervisory classifications for its intended organization chart. As our top priority, Engineering respectfully requests approval of our proposed realignment of positions within the Financial Management and Data Analytics (FMDA) Program, which will result in a net General Fund savings of \$152,589.

Priority #2: Second, Engineering requests the realignment of one position (add/delete) in our GIS & Mapping Division to improve bureau wide programming support on internal and public-facing applications. This change would result in a modest General Fund savings.

Requested Project Delivery Position Adjustments

Engineering is the City's primary project delivery organization for non-proprietary capital projects, with a capital portfolio of over \$8 billion including wastewater and stormwater infrastructure, municipal facilities, parks, bridges, and street improvements. Given available staff, Engineering continues to manage to our resources by deferring projects that do not meet urgent safety, liability, or grant deadline criteria. These staffing challenges are especially acute in the Street Improvement Program, which continues to be at risk of missing Affordable Housing and Sustainable Communities (AHSC) grant deadlines at current staffing levels. Engineering understands that there are ongoing efforts by the Street and Transportation Projects Oversight Committee (STPOC) to review staffing levels across the City's transportation grant portfolio and looks forward to participating in these discussions.

Priority #3: Engineering is providing project management and construction management support for one of the largest water recycling programs in California with work valued at over \$700 million at both the Donald C. Tillman and Los Angeles Glendale Water Reclamation Plants. Some projects are in construction with additional projects beginning construction in FY 2026-27 and have staffing needs for four engineering positions for project management and construction management. Engineering requests funding be provided for these four positions, with front-funding from the Sewer Construction and Maintenance (SCM) Fund and reimbursement from LADWP, per the executed Memorandum of Agreement between LASAN and LADWP.

Priority #4: Engineering is scheduled to advance a number of Measure W projects next fiscal year, which will be deferred unless additional staff are provided. Engineering requests consideration of funding for two positions, one Civil Engineering Associate II, and one Environmental Supervisor II to support the Clean Water Program, with funding provided by Measure W.

Engineering is still analyzing the proposed Capital and Technology Improvement Expenditure Program and will provide supplemental recommendations regarding project funding, if needed.

As requested, Engineering's organization chart is attached.

Thank you for your committee's consideration of our recommendations. If you have any questions, please contact me at (213) 485-4920.

Respectfully submitted,

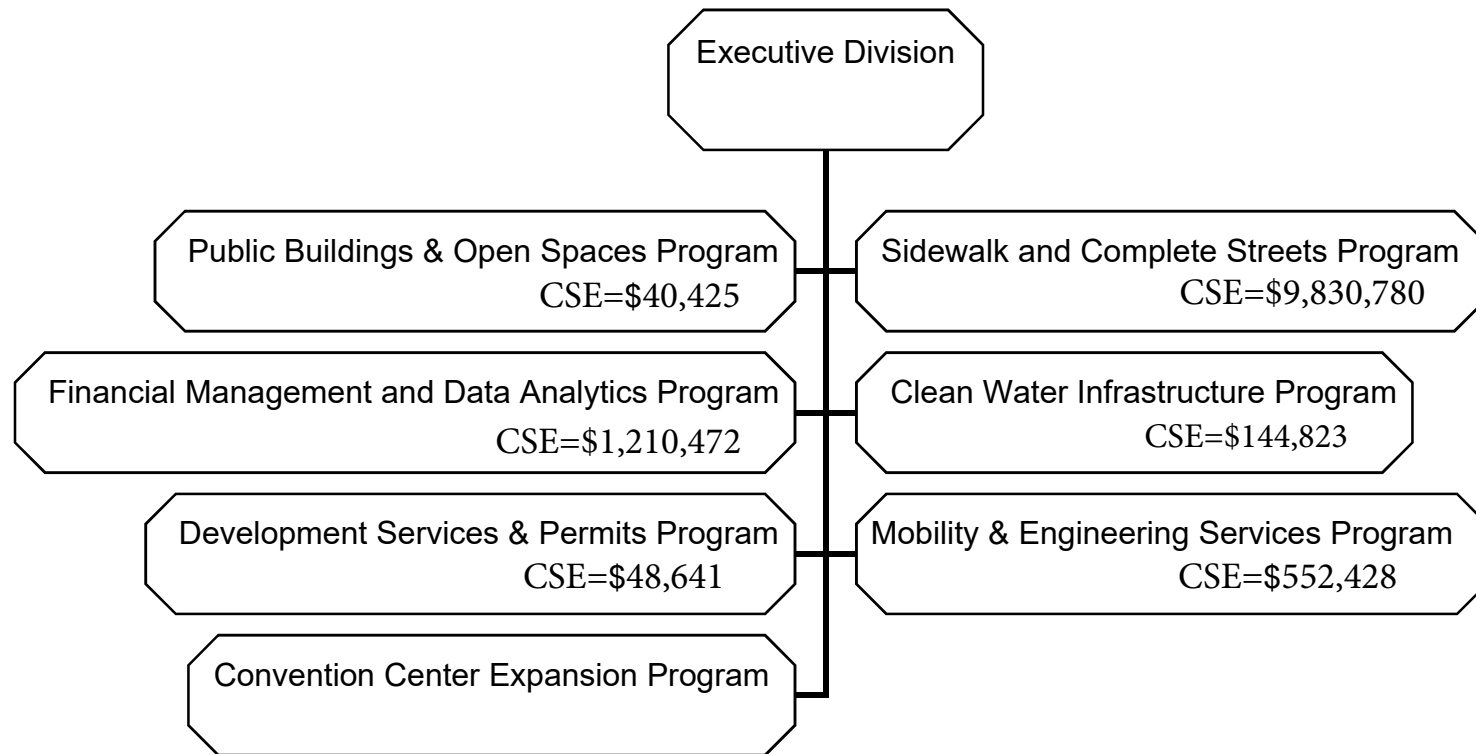


Alfred Mata, P.E.
Interim City Engineer

Attachment

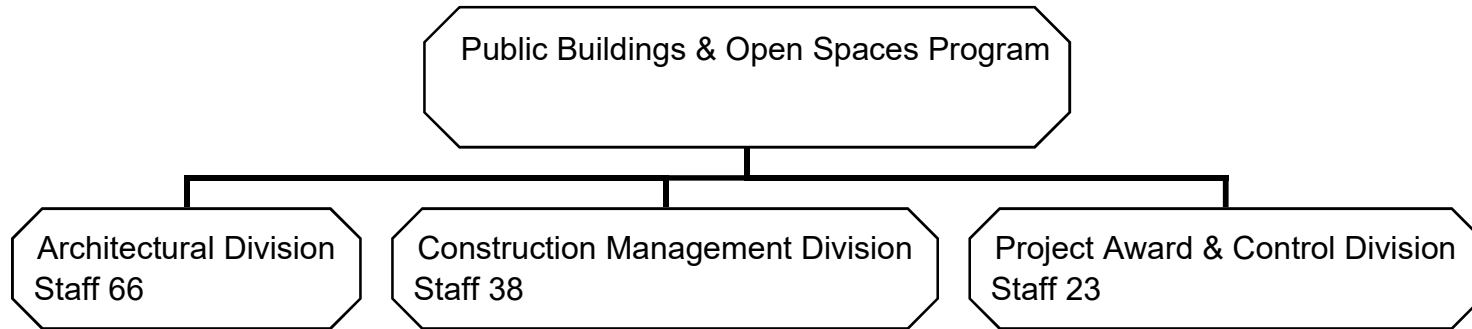
cc: Andrea Greene, Office of the Mayor
Matthew Hale, Office of the Mayor
Steve S. Kang, Board of Public Works

**BUREAU OF ENGINEERING
EXECUTIVE DIVISION
ORGANIZATION CHART**

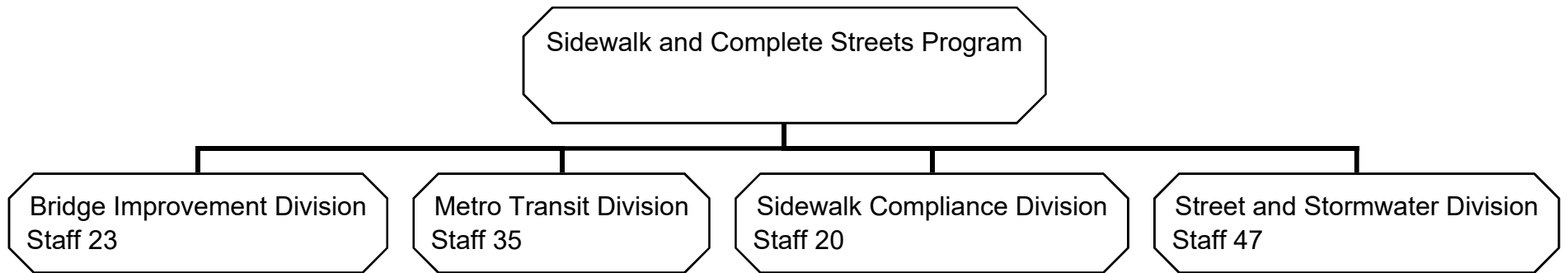


CSE = Contractual Services Estimates

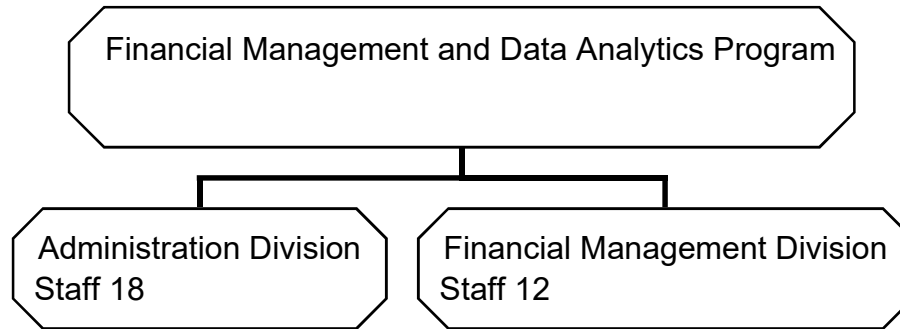
**BUREAU OF ENGINEERING
PUBLIC BUILDINGS & OPEN SPACES
PROGRAM ORGANIZATION CHART**



**BUREAU OF ENGINEERING
MOBILITY PROGRAM
ORGANIZATION CHART**



**BUREAU OF ENGINEERING
FINANCIAL MANAGEMENT & DATA
ANALYTICS
ORGANIZATION CHART**



**BUREAU OF ENGINEERING
CLEAN WATER INFRASTRUCTURE
PROGRAM ORGANIZATION CHART**

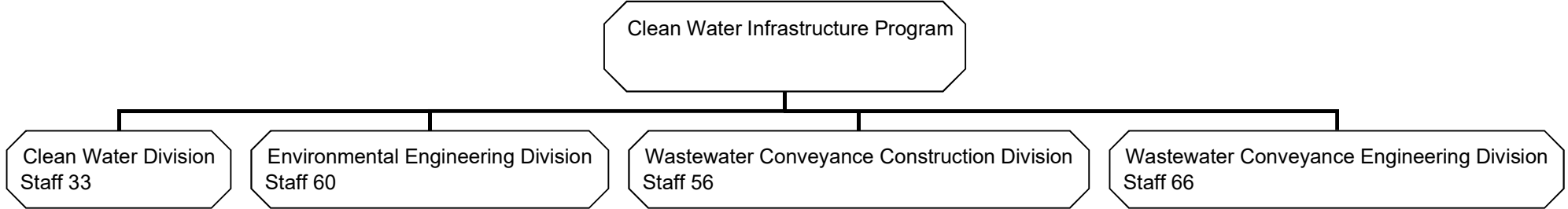
Clean Water Infrastructure Program

Clean Water Division
Staff 33

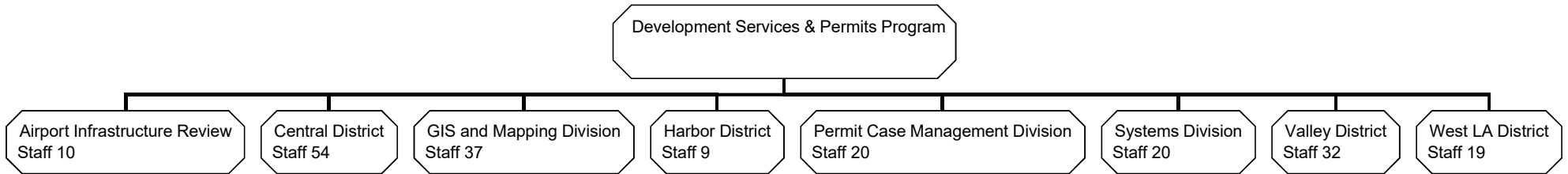
Environmental Engineering Division
Staff 60

Wastewater Conveyance Construction Division
Staff 56

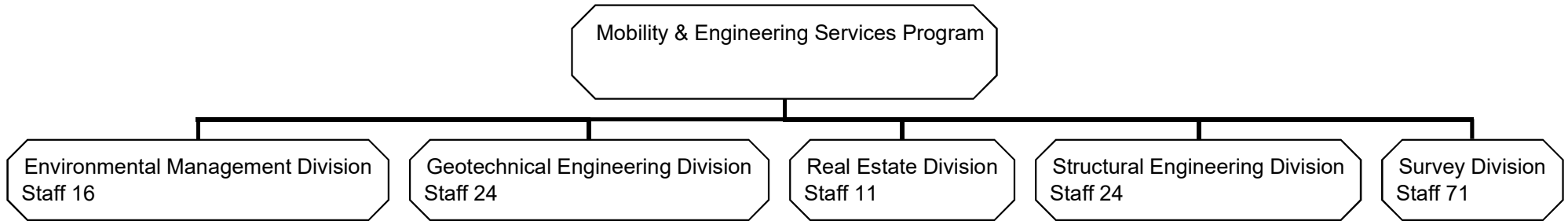
Wastewater Conveyance Engineering Division
Staff 66



**BUREAU OF ENGINEERING
DEVELOPMENT SERVICES & PERMITS PROGRAM
ORGANIZATION CHART**



**BUREAU OF ENGINEERING
MOBILITY & ENGINEERING SERVICES
PROGRAM
ORGANIZATION CHART**



**BUREAU OF ENGINEERING
CONVENTION CENTER DIVISION
ORGANIZATION CHART**

